



NATIONAL FLOOD INSURANCE PROGRAM
DISCOVERY WORK MAP
DRAFT
 WASATCH-UINTAH BASIN
 DAGGETT, DUCHESNE, SUMMIT, UINTAH, AND WASATCH COUNTIES, UTAH
 RISK MAP PROJECT
 Map 8 Duchesne and Wasatch County - Unincorporated Areas

Draft Zone A Base Level Engineering (BLE) Results
 Utah Division of Emergency Management

RELEASE DATE
 07/06/2022

FEMA **AECOM**

MAP SYMBOLOLOGY

- Stream Gauges
- Letters of Map Amendment (LOMA)
- Study Streams*
- LiDAR Acquisition Area (2018)/Project Area
- Draft BLE Zone A**
- Draft Alluvial Fan
- Municipalities
- Counties
- Tribal Land**

Effective NFIP Floodplains

- Effective Zone AE (1%-annual-chance flood)
- Effective Zone A (1%-annual-chance flood)
- Effective Floodway (1%-annual-chance flood)
- Effective Zone AO (1%-annual-chance flood)
- Effective 0.2%-annual-chance flood

0 300,000 600,000 1,200,000
 Feet

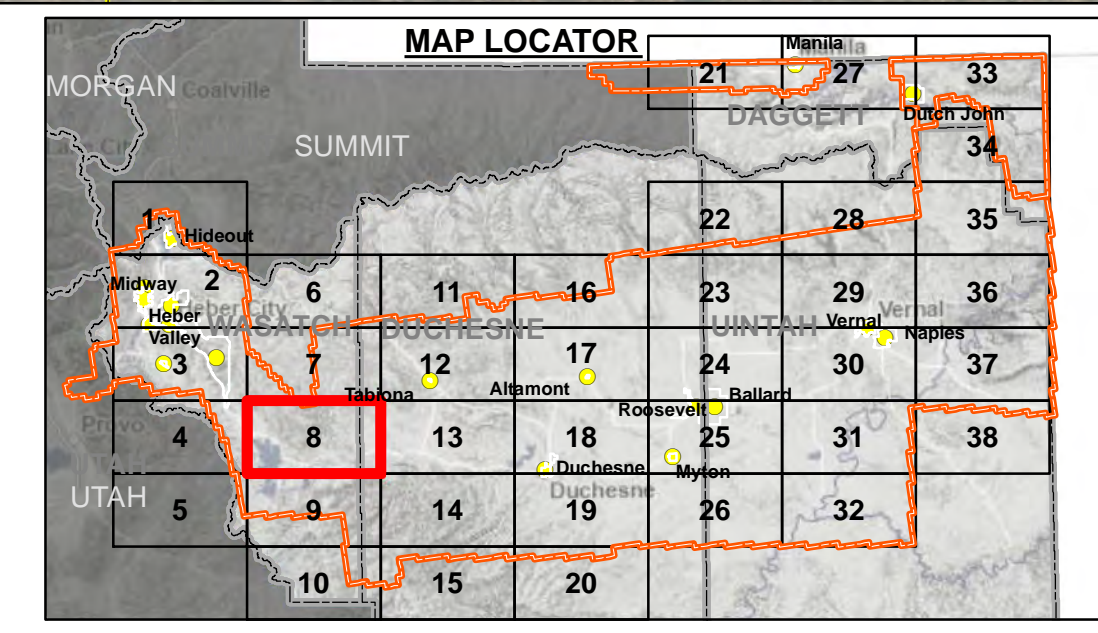
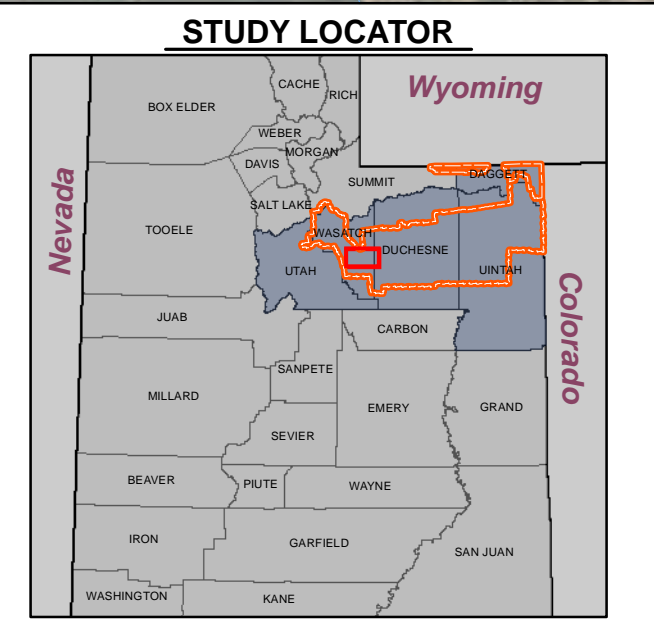
NOTES TO USERS

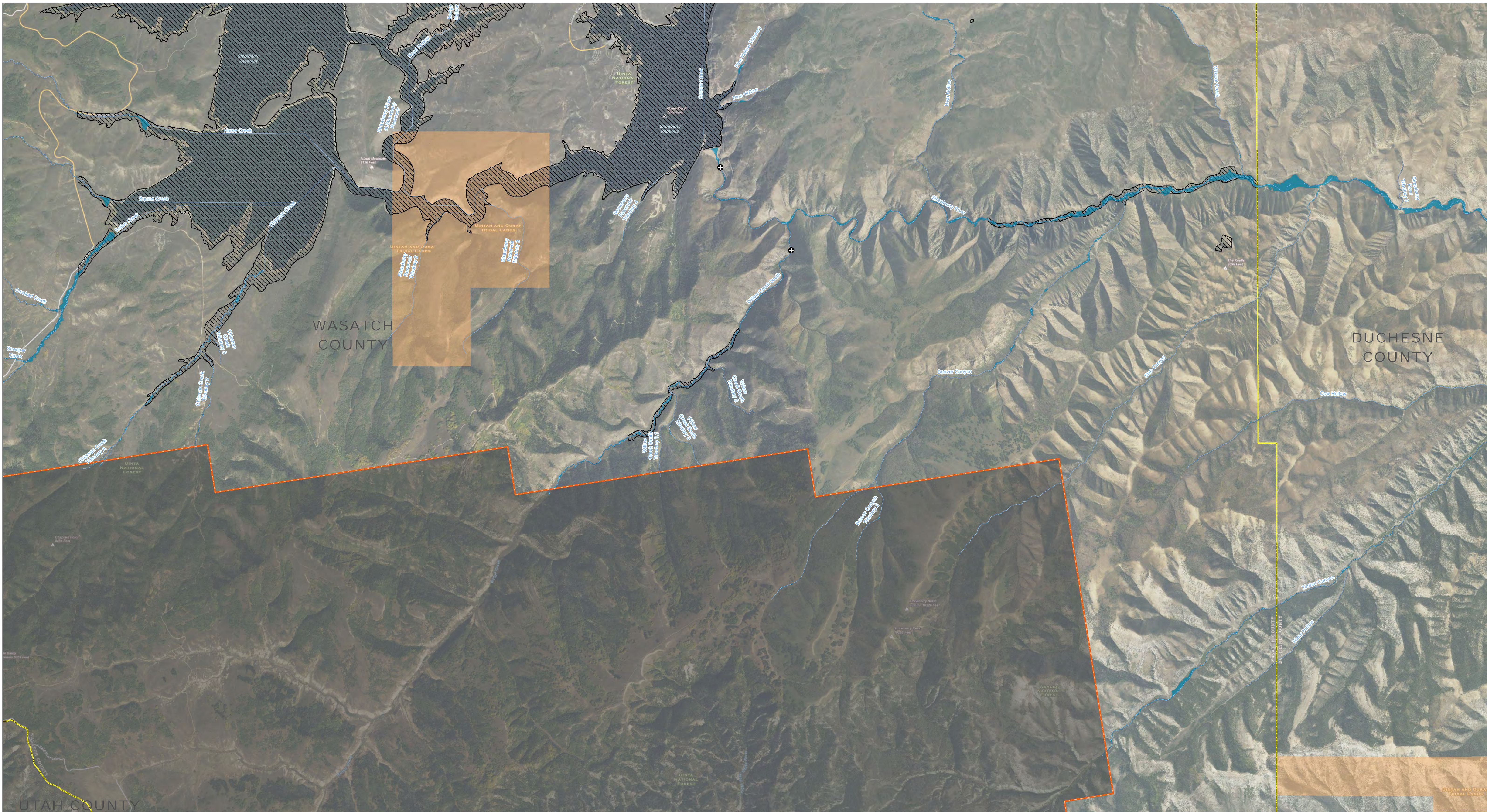
* Streams with a drainage area greater than 1 square mile

** Draft 2022 hydraulic analysis using new LIDAR topography (no ground survey conducted, Tribal Lands excluded).

All base information on this map sourced from public data, including the Utah Geospatial Resource Center (UGRC), FEMA, ESRI, and USGS.

Note: This map is not an official Flood Insurance Rate Map and the data presented on this map is for draft information only, to be used as best available data where applicable.





NATIONAL FLOOD INSURANCE PROGRAM
 WASATCH-UINTAH BASIN
 DAGGETT, DUCHESE, SUMMIT, UINTAH, AND WASATCH COUNTIES, UTAH
 RISK MAP PROJECT

DISCOVERY WORK MAP
DRAFT

Map 9 Duchesne and Wasatch County - Unincorporated Areas

Draft Zone A Base Level Engineering (BLE) Results
 Utah Division of Emergency Management

RELEASE DATE
 07/06/2022

MAP SYMBOLOLOGY

- Stream Gauges
- Letters of Map Amendment (LOMA)
- Study Streams*
- LiDAR Acquisition Area (2018)/ Project Area
- Draft BLE Zone A**
- Draft Alluvial Fan
- Municipalities
- Counties
- Tribal Land**

Effective NFIP Floodplains

- Effective Zone AE (1%-annual-chance flood)
- Effective Zone A (1%-annual-chance flood)
- Effective Floodway (1%-annual-chance flood)
- Effective Zone AO (1%-annual-chance flood)
- Effective 0.2%-annual-chance flood

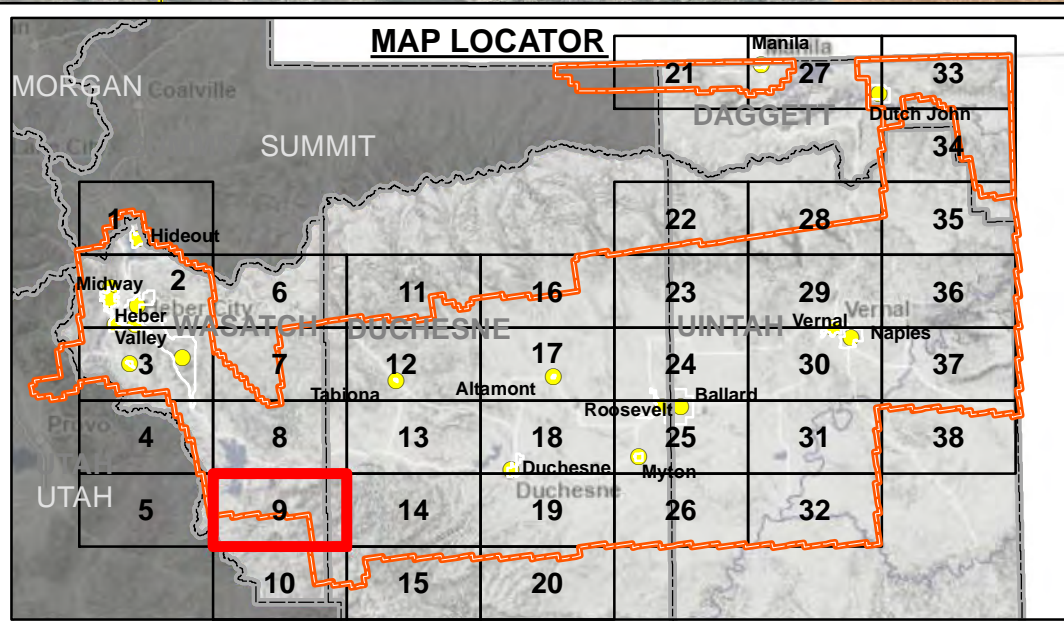
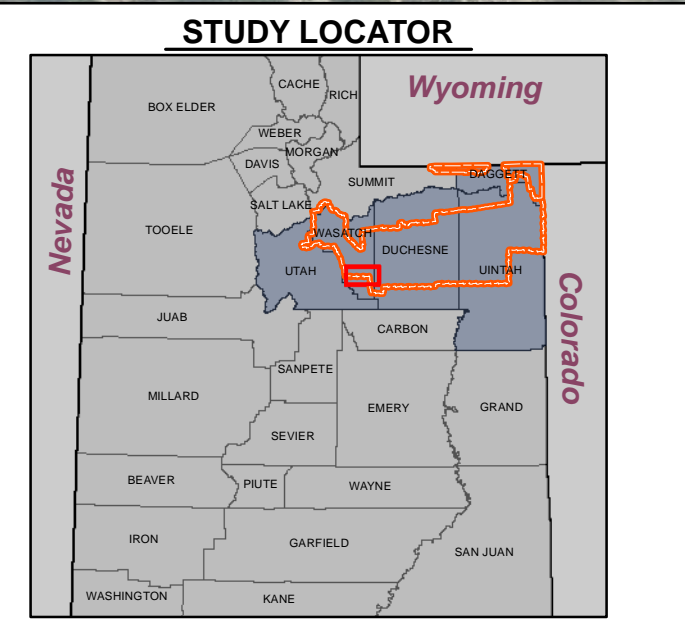
NOTES TO USERS

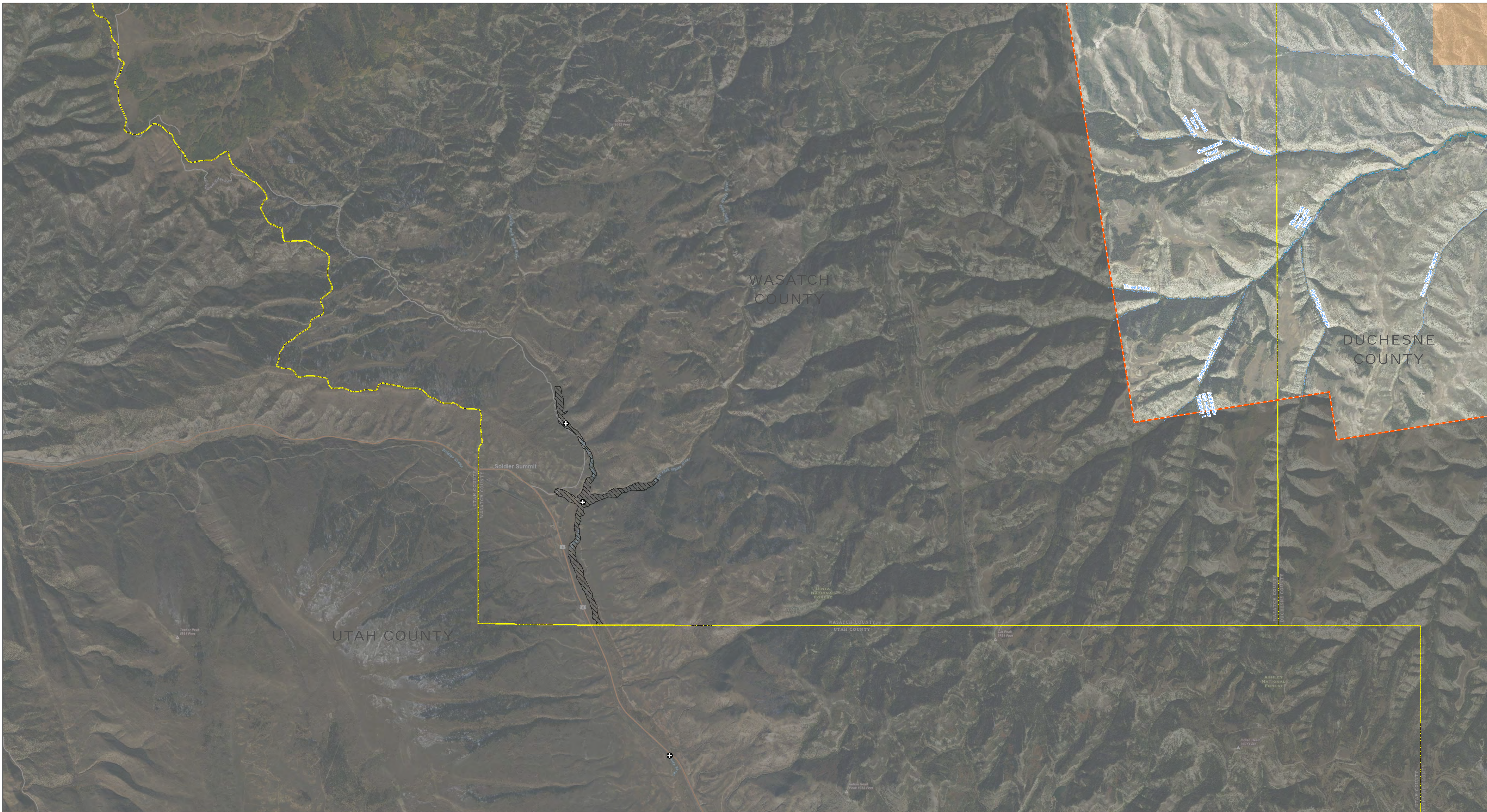
* Streams with a drainage area greater than 1 square mile

** Draft 2022 hydraulic analysis using new LIDAR topography (no ground survey conducted, Tribal Lands excluded).

All base information on this map sourced from public data, including the Utah Geospatial Resource Center (UGRC), FEMA, ESRI, and USGS.

Note: This map is not an official Flood Insurance Rate Map and the data presented on this map is for draft information only, to be used as best available data where applicable.





NATIONAL FLOOD INSURANCE PROGRAM
 WASATCH-UINTAH BASIN
 DAGGETT, DUCHESNE, SUMMIT, UINTAH, AND WASATCH COUNTIES, UTAH
 RISK MAP PROJECT

DISCOVERY WORK MAP
DRAFT

Map 10 Duchesne and Wasatch County - Unincorporated Areas

Draft Zone A Base Level Engineering (BLE) Results
 Utah Division of Emergency Management

RELEASE DATE
 07/06/2022

FEMA

AECOM

MAP SYMBOLOLOGY

- Stream Gauges
- Letters of Map Amendment (LOMA)
- Study Streams*
- LiDAR Acquisition Area (2018)/ Project Area
- Draft BLE Zone A**
- Draft Alluvial Fan
- Municipalities
- Counties
- Tribal Land**

Effective NFIP Floodplains

- Effective Zone AE (1%-annual-chance flood)
- Effective Zone A (1%-annual-chance flood)
- Effective Floodway (1%-annual-chance flood)
- Effective Zone AO (1%-annual-chance flood)
- Effective 0.2%-annual-chance flood

0 300,000 600,000 1,200,000
 Feet

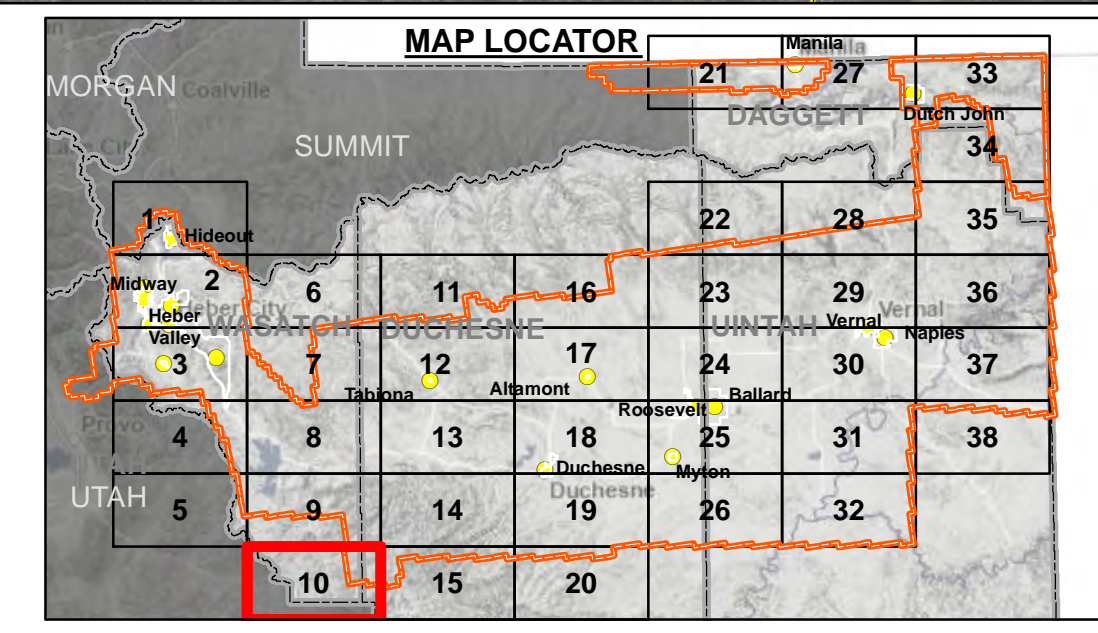
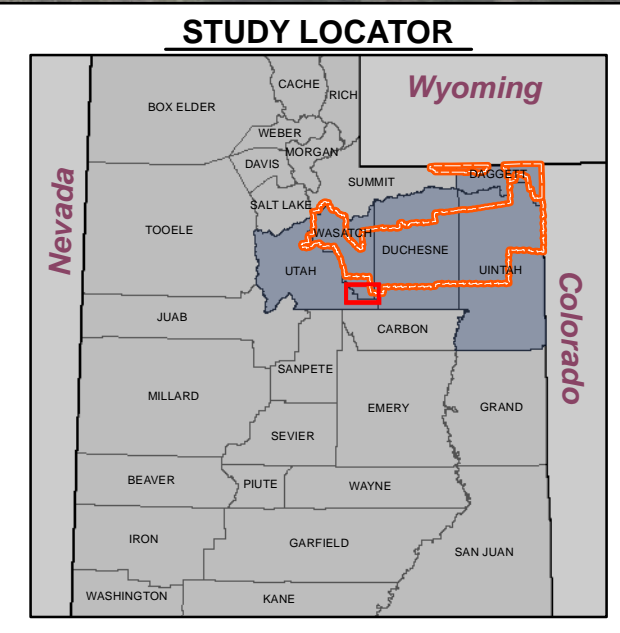
NOTES TO USERS

* Streams with a drainage area greater than 1 square mile

** Draft 2022 hydraulic analysis using new LiDAR topography (no ground survey conducted, Tribal Lands excluded).

All base information on this map sourced from public data, including the Utah Geospatial Resource Center (UGRC), FEMA, ESRI, and USGS.

Note: This map is not an official Flood Insurance Rate Map and the data presented on this map is for draft information only, to be used as best available data where applicable.





NATIONAL FLOOD INSURANCE PROGRAM
 WASATCH-UINTAH BASIN
 DAGGETT, DUCHESNE, SUMMIT, UINTAH, AND WASATCH COUNTIES, UTAH
 RISK MAP PROJECT

DISCOVERY WORK MAP
DRAFT

Map 11 Duchesne County - Unincorporated Areas

Draft Zone A Base Level Engineering (BLE) Results
 Utah Division of Emergency Management

RELEASE DATE
 07/06/2022

MAP SYMBOLOLOGY

- Stream Gauges
- Letters of Map Amendment (LOMA)
- Study Streams*
- LiDAR Acquisition Area (2018)/ Project Area
- Draft BLE Zone A**
- Draft Alluvial Fan
- Municipalities
- Counties
- Tribal Land**

Effective NFIP Floodplains

- Effective Zone AE (1%-annual-chance flood)
- Effective Zone A (1%-annual-chance flood)
- Effective Floodway (1%-annual-chance flood)
- Effective Zone AO (1%-annual-chance flood)
- Effective 0.2%-annual-chance flood

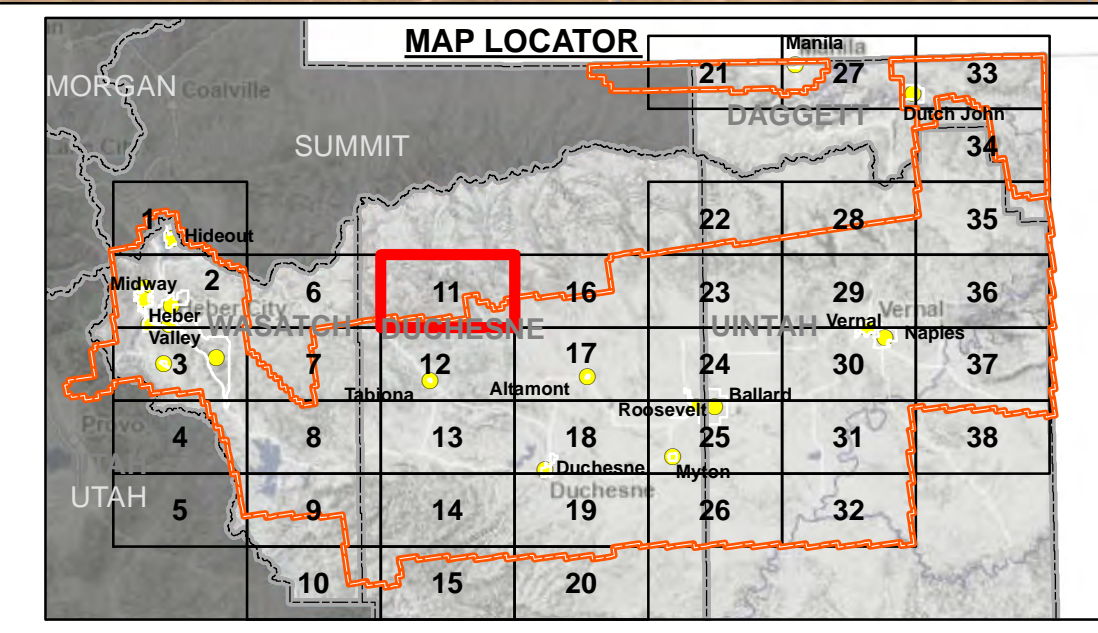
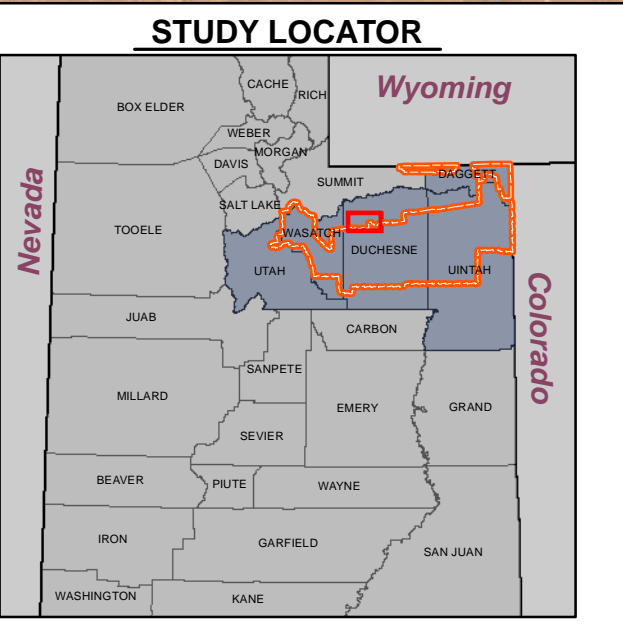
NOTES TO USERS

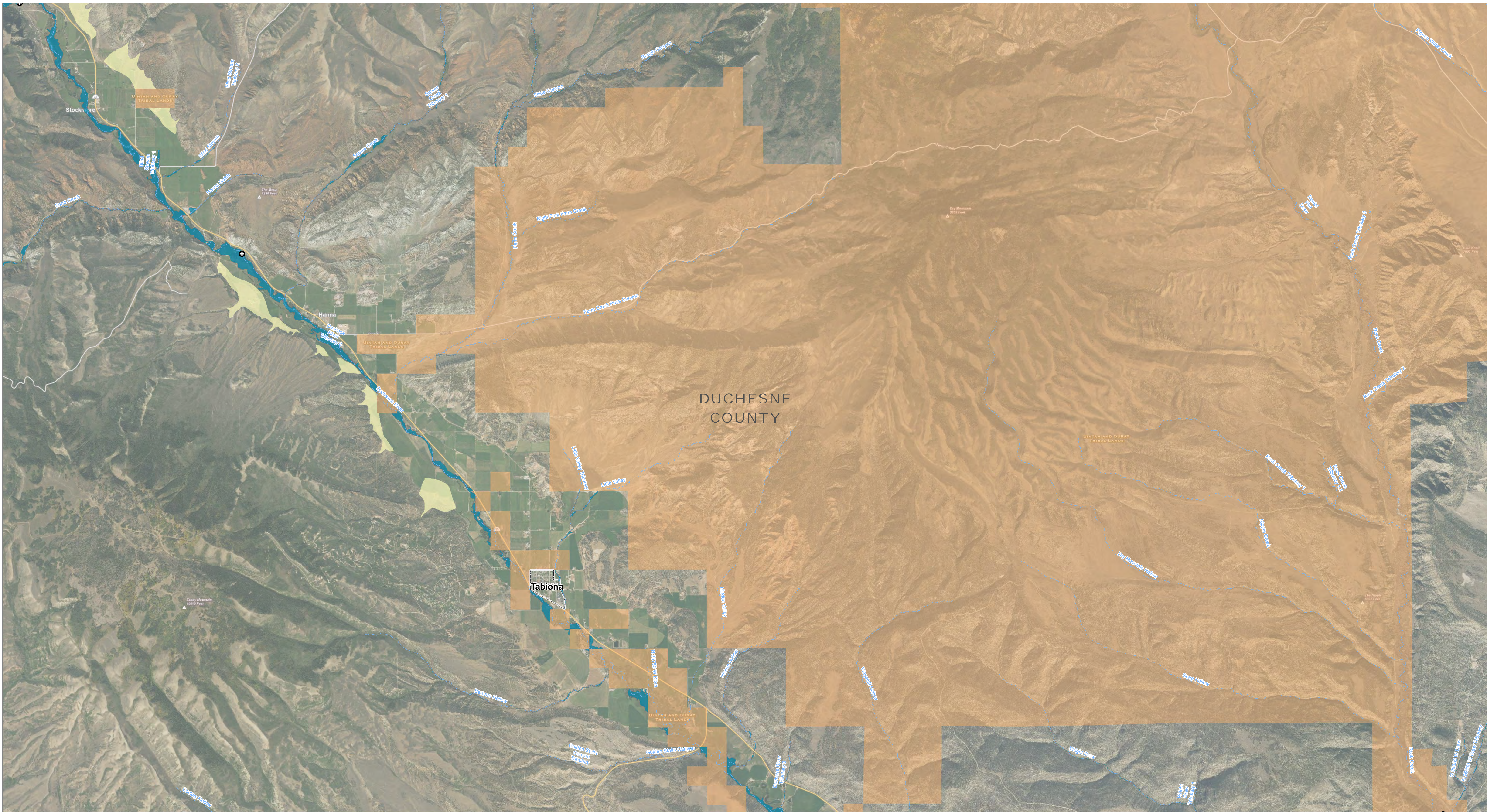
* Streams with a drainage area greater than 1 square mile

** Draft 2022 hydraulic analysis using new LiDAR topography (no ground survey conducted, Tribal Lands excluded).

All base information on this map sourced from public data, including the Utah Geospatial Resource Center (UGRC), FEMA, ESRI, and USGS.

Note: This map is not an official Flood Insurance Rate Map and the data presented on this map is for draft information only, to be used as best available data where applicable.





NATIONAL FLOOD INSURANCE PROGRAM
 WASATCH-UINTAH BASIN
 DAGGETT, DUCHESNE, SUMMIT, UINTAH, AND WASATCH COUNTIES, UTAH
 RISK MAP PROJECT

DISCOVERY WORK MAP
DRAFT

Map 12 Duchesne County - Unincorporated Areas

Draft Zone A Base Level Engineering (BLE) Results
 Utah Division of Emergency Management

RELEASE DATE
 07/06/2022

MAP SYMBOLOLOGY

- Stream Gauges
- Letters of Map Amendment (LOMA)
- Study Streams*
- LIDAR Acquisition Area (2018)/ Project Area
- Draft BLE Zone A**
- Draft Alluvial Fan
- Municipalities
- Counties
- Tribal Land**

Effective NFIP Floodplains

- Effective Zone AE (1%-annual-chance flood)
- Effective Zone A (1%-annual-chance flood)
- Effective Floodway (1%-annual-chance flood)
- Effective Zone AO (1%-annual-chance flood)
- Effective 0.2%-annual-chance flood

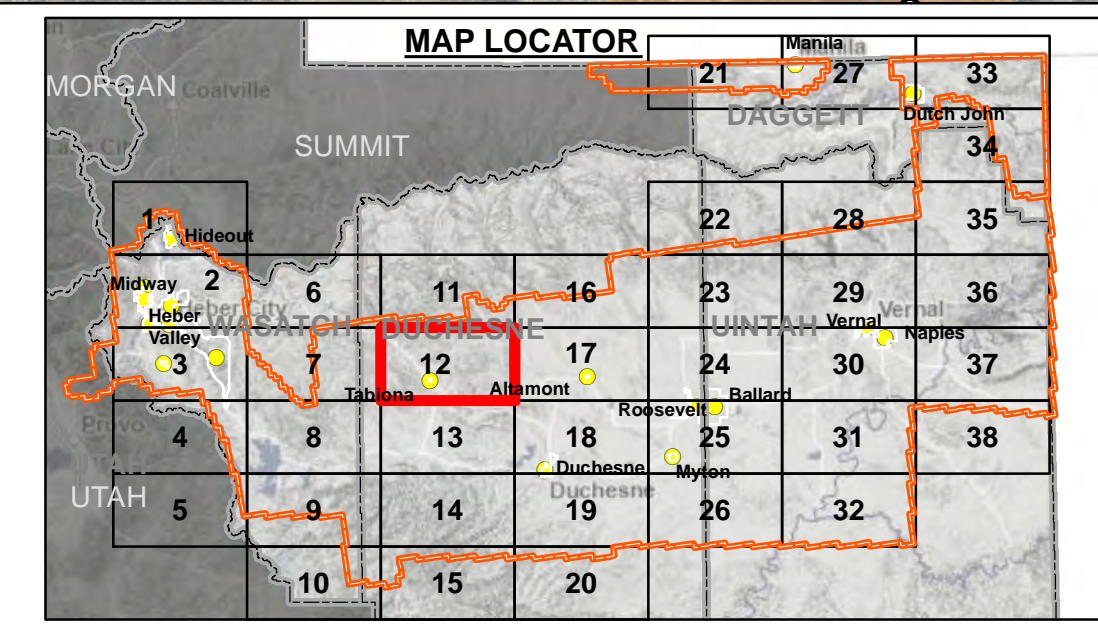
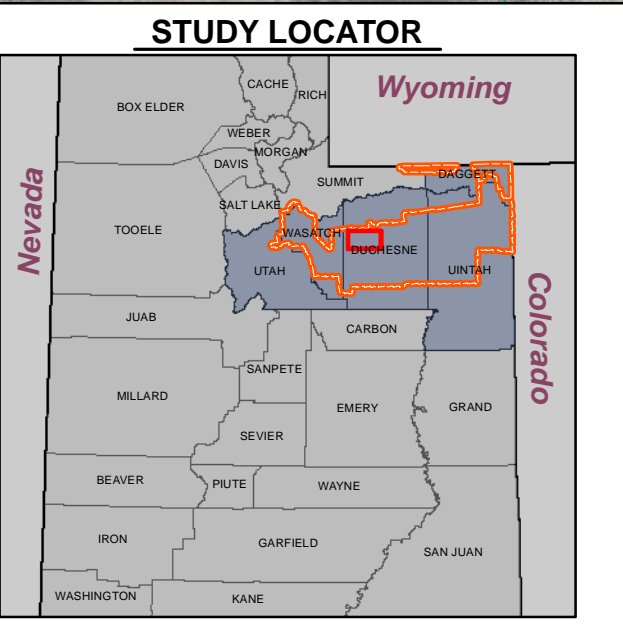
NOTES TO USERS

* Streams with a drainage area greater than 1 square mile

** Draft 2022 hydraulic analysis using new LIDAR topography (no ground survey conducted, Tribal Lands excluded).

All base information on this map sourced from public data, including the Utah Geospatial Resource Center (UGRC), FEMA, ESRI, and USGS.

Note: This map is not an official Flood Insurance Rate Map and the data presented on this map is for draft information only, to be used as best available data where applicable.





NATIONAL FLOOD INSURANCE PROGRAM

DISCOVERY WORK MAP
DRAFT

WASATCH-UINTEAN BASIN
 DAGGETT, DUCHESNE, SUMMIT, UINTEAN, AND WASATCH COUNTIES, UTAH
 RISK MAP PROJECT

Map 14 Duchesne County - Unincorporated Areas

Draft Zone A Base Level Engineering (BLE) Results
 Utah Division of Emergency Management

RELEASE DATE
 07/06/2022

MAP SYMBOLOGY

- Stream Gauges
- Letters of Map Amendment (LOMA)
- Study Streams*
- LIDAR Acquisition Area (2018)/ Project Area
- Draft BLE Zone A**
- Draft Alluvial Fan
- Municipalities
- Counties
- Tribal Land**

Effective NFIP Floodplains

- Effective Zone AE (1%-annual-chance flood)
- Effective Zone A (1%-annual-chance flood)
- Effective Floodway (1%-annual-chance flood)
- Effective Zone AO (1%-annual-chance flood)
- Effective 0.2%-annual-chance flood

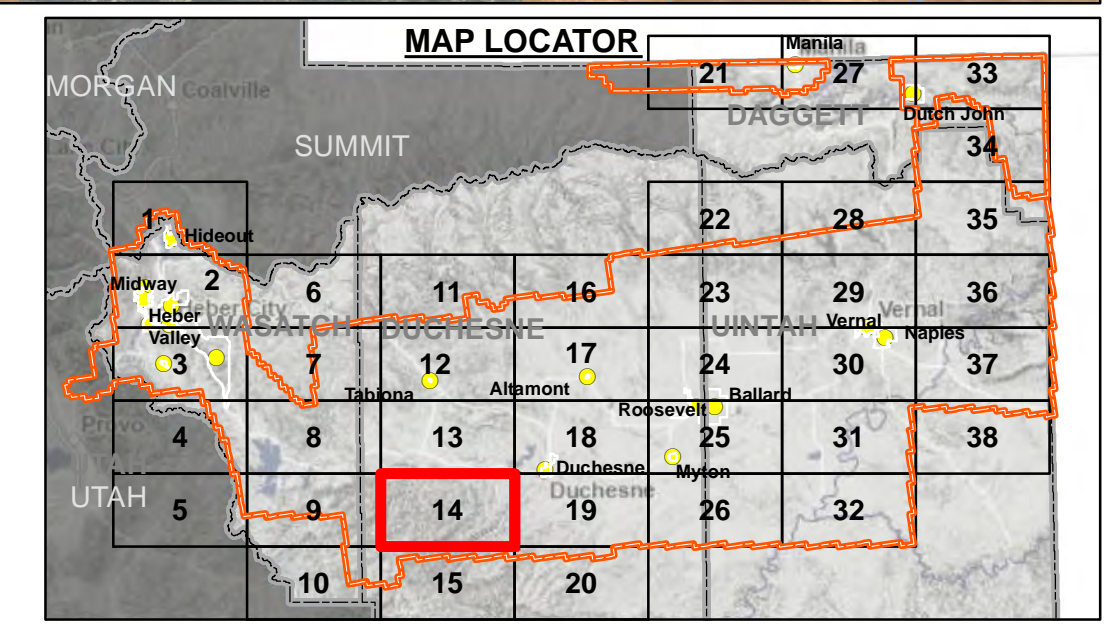
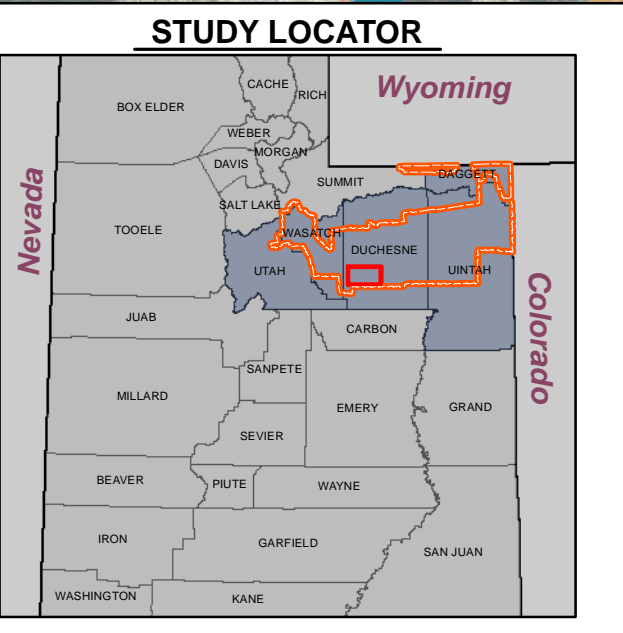
NOTES TO USERS

* Streams with a drainage area greater than 1 square mile

** Draft 2022 hydraulic analysis using new LIDAR topography (no ground survey conducted, Tribal Lands excluded).

All base information on this map sourced from public data, including the Utah Geospatial Resource Center (UGRC), FEMA, ESRI, and USGS.

Note: This map is not an official Flood Insurance Rate Map and the data presented on this map is for draft information only, to be used as best available data where applicable.





NATIONAL FLOOD INSURANCE PROGRAM
 WASATCH-UINTAH BASIN
 DAGGETT, DUCHESNE, SUMMIT, UINTAH, AND WASATCH COUNTIES, UTAH
 RISK MAP PROJECT

DISCOVERY WORK MAP
DRAFT

Map 15 Duchesne County - Unincorporated Areas

Draft Zone A Base Level Engineering (BLE) Results
 Utah Division of Emergency Management

RELEASE DATE
 07/06/2022

FEMA

AECOM

MAP SYMBOLOLOGY

- Stream Gauges
- Letters of Map Amendment (LOMA)
- Study Streams*
- LiDAR Acquisition Area (2018)/ Project Area
- Draft BLE Zone A**
- Draft Alluvial Fan
- Municipalities
- Counties
- Tribal Land**

Effective NFIP Floodplains

- Effective Zone AE (1%-annual-chance flood)
- Effective Zone A (1%-annual-chance flood)
- Effective Floodway (1%-annual-chance flood)
- Effective Zone AO (1%-annual-chance flood)
- Effective 0.2%-annual-chance flood

0 300,000 600,000 1,200,000
 Feet

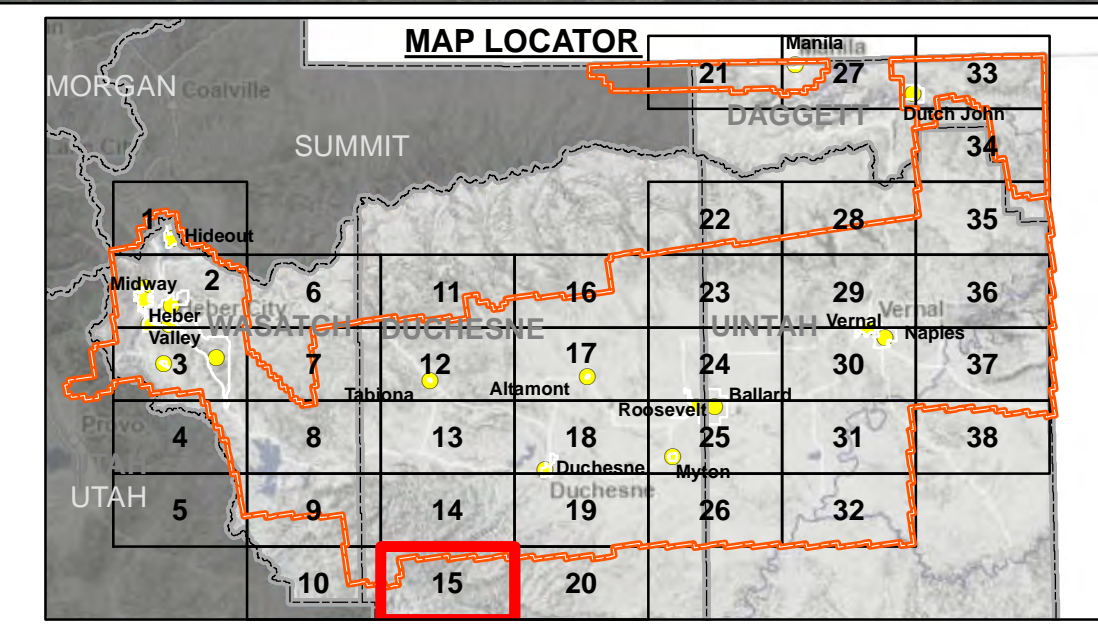
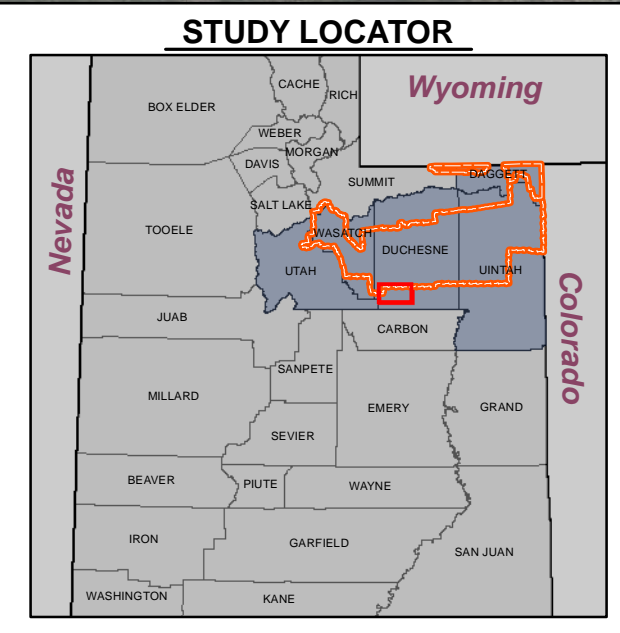
NOTES TO USERS

* Streams with a drainage area greater than 1 square mile

** Draft 2022 hydraulic analysis using new LiDAR topography (no ground survey conducted, Tribal Lands excluded).

All base information on this map sourced from public data, including the Utah Geospatial Resource Center (UGRC), FEMA, ESRI, and USGS.

Note: This map is not an official Flood Insurance Rate Map and the data presented on this map is for draft information only, to be used as best available data where applicable.





NATIONAL FLOOD INSURANCE PROGRAM
 WASATCH-UINTAH BASIN
 DAGGETT, DUCHEсне, SUMMIT, UINTAH, AND WASATCH COUNTIES, UTAH
 RISK MAP PROJECT

DISCOVERY WORK MAP
DRAFT

Map 16 Duchesne County - Unincorporated Areas

Draft Zone A Base Level Engineering (BLE) Results
 Utah Division of Emergency Management

RELEASE DATE
 07/06/2022

MAP SYMBOLOLOGY

- Stream Gauges
- Letters of Map Amendment (LOMA)
- Study Streams*
- LiDAR Acquisition Area (2018)/ Project Area
- Draft BLE Zone A**
- Draft Alluvial Fan
- Municipalities
- Counties
- Tribal Land**

Effective NFIP Floodplains

- Effective Zone AE (1%-annual-chance flood)
- Effective Zone A (1%-annual-chance flood)
- Effective Floodway (1%-annual-chance flood)
- Effective Zone AO (1%-annual-chance flood)
- Effective 0.2%-annual-chance flood

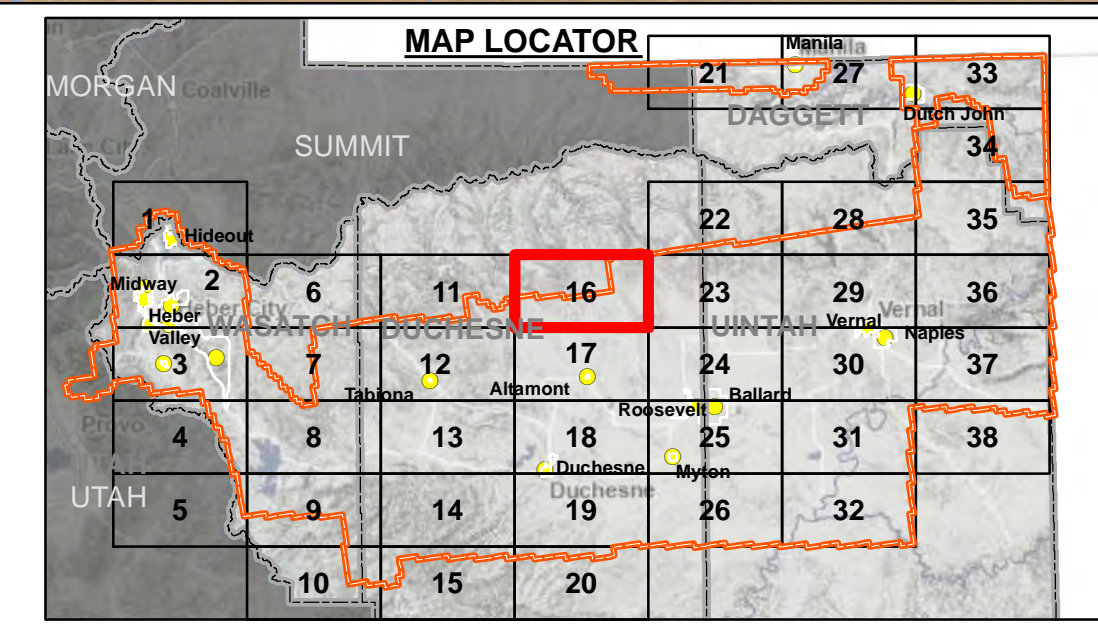
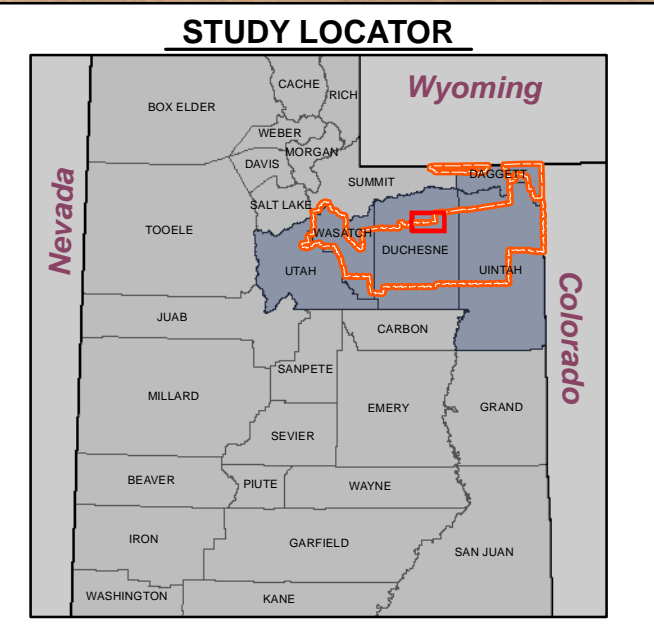
NOTES TO USERS

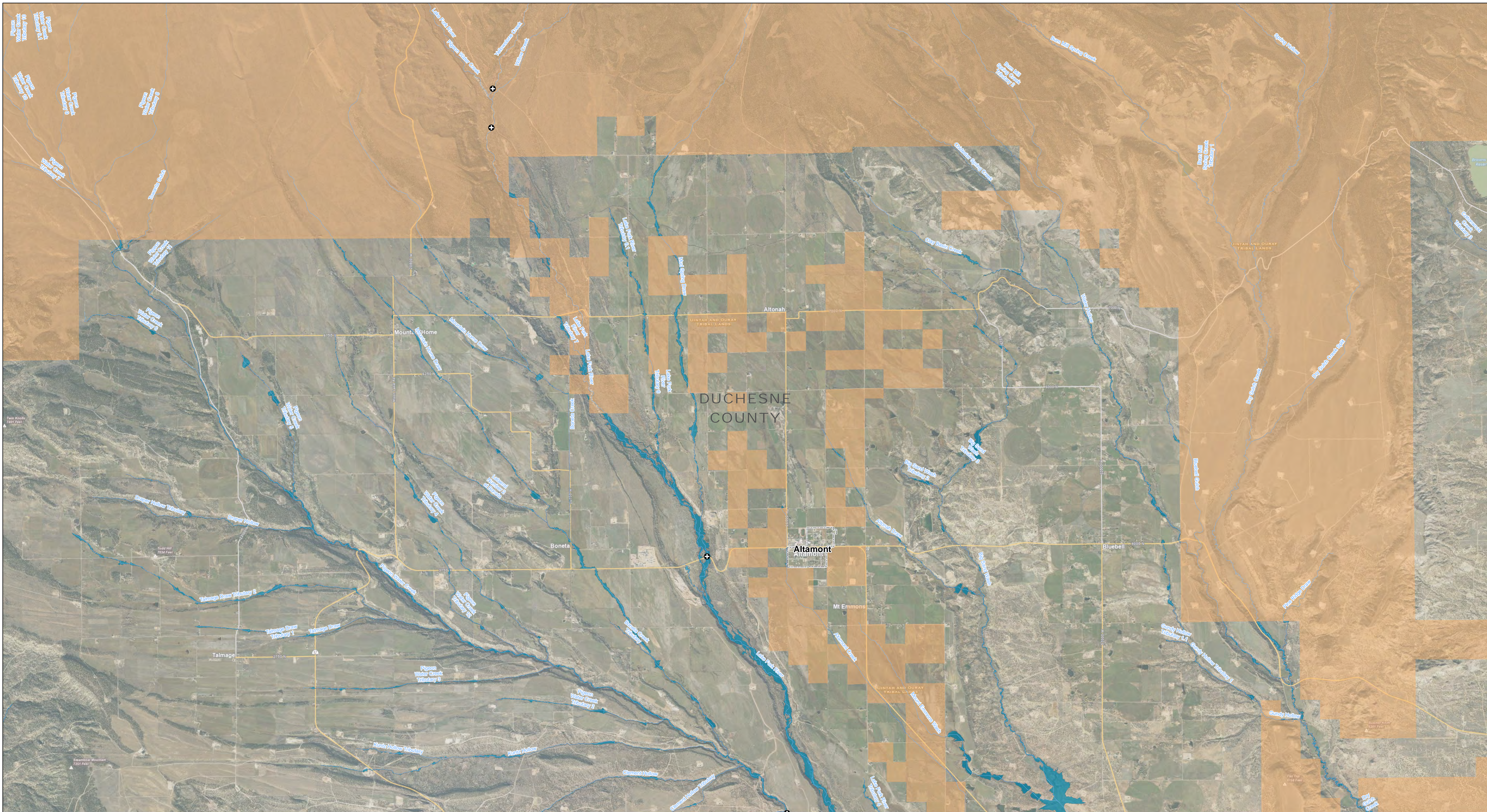
* Streams with a drainage area greater than 1 square mile

** Draft 2022 hydraulic analysis using new LiDAR topography (no ground survey conducted, Tribal Lands excluded).

All base information on this map sourced from public data, including the Utah Geospatial Resource Center (UGRC), FEMA, ESRI, and USGS.

Note: This map is not an official Flood Insurance Rate Map and the data presented on this map is for draft information only, to be used as best available data where applicable.





NATIONAL FLOOD INSURANCE PROGRAM
DISCOVERY WORK MAP
DRAFT
 WASATCH-UINTAH BASIN
 DAGGETT, DUCHEсне, SUMMIT, UINTAH, AND WASATCH COUNTIES, UTAH
 RISK MAP PROJECT
 Map 17 Duchesne County - Unincorporated Areas

Draft Zone A Base Level Engineering (BLE) Results
 Utah Division of Emergency Management

RELEASE DATE
 07/06/2022

FEMA
AECOM

MAP SYMBOLOLOGY

- Stream Gauges
- Letters of Map Amendment (LOMA)
- Study Streams*
- LiDAR Acquisition Area (2018)/ Project Area
- Draft BLE Zone A**
- Draft Alluvial Fan
- Municipalities
- Counties
- Tribal Land**

Effective NFIP Floodplains

- Effective Zone AE (1%-annual-chance flood)
- Effective Zone A (1%-annual-chance flood)
- Effective Floodway (1%-annual-chance flood)
- Effective Zone AO (1%-annual-chance flood)
- Effective 0.2%-annual-chance flood

0 300,000 600,000 1,200,000
 Feet

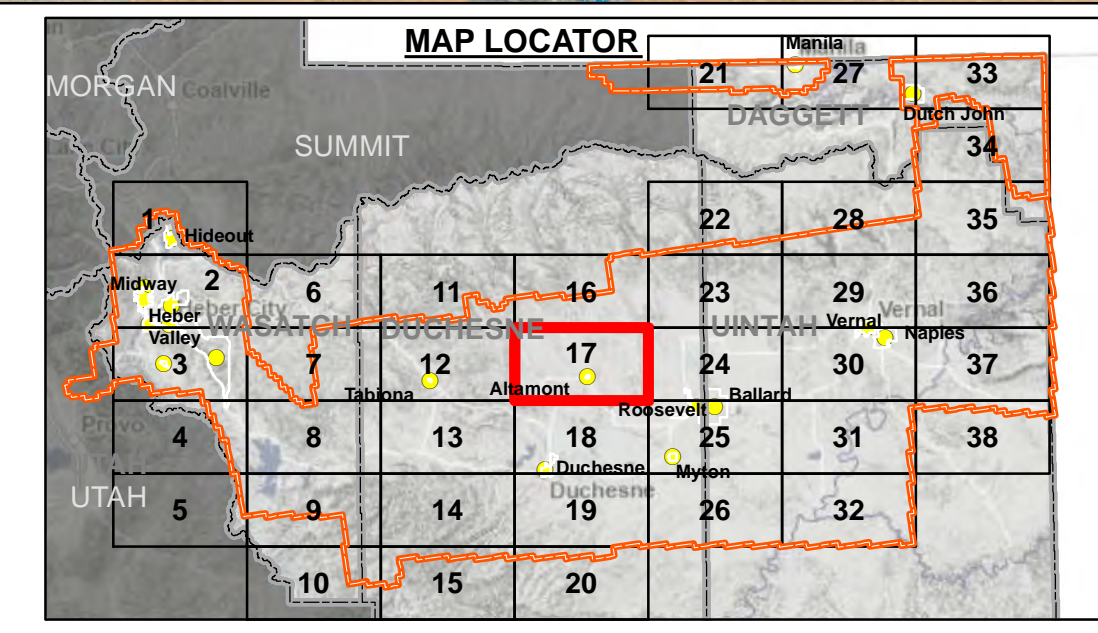
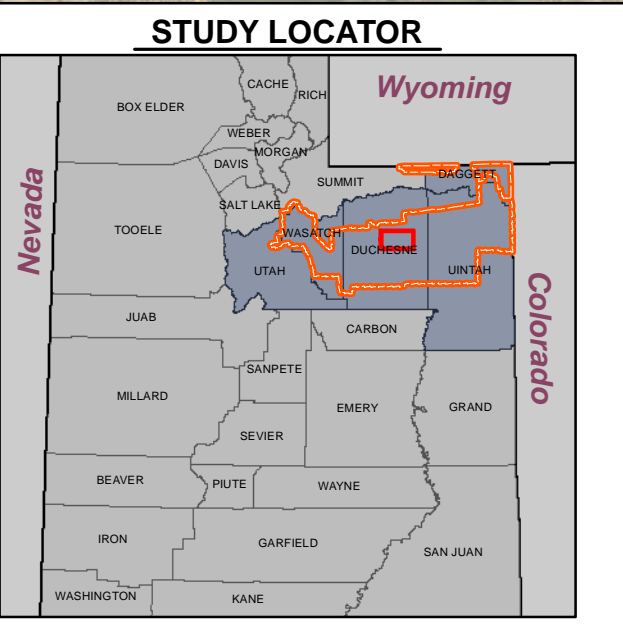
NOTES TO USERS

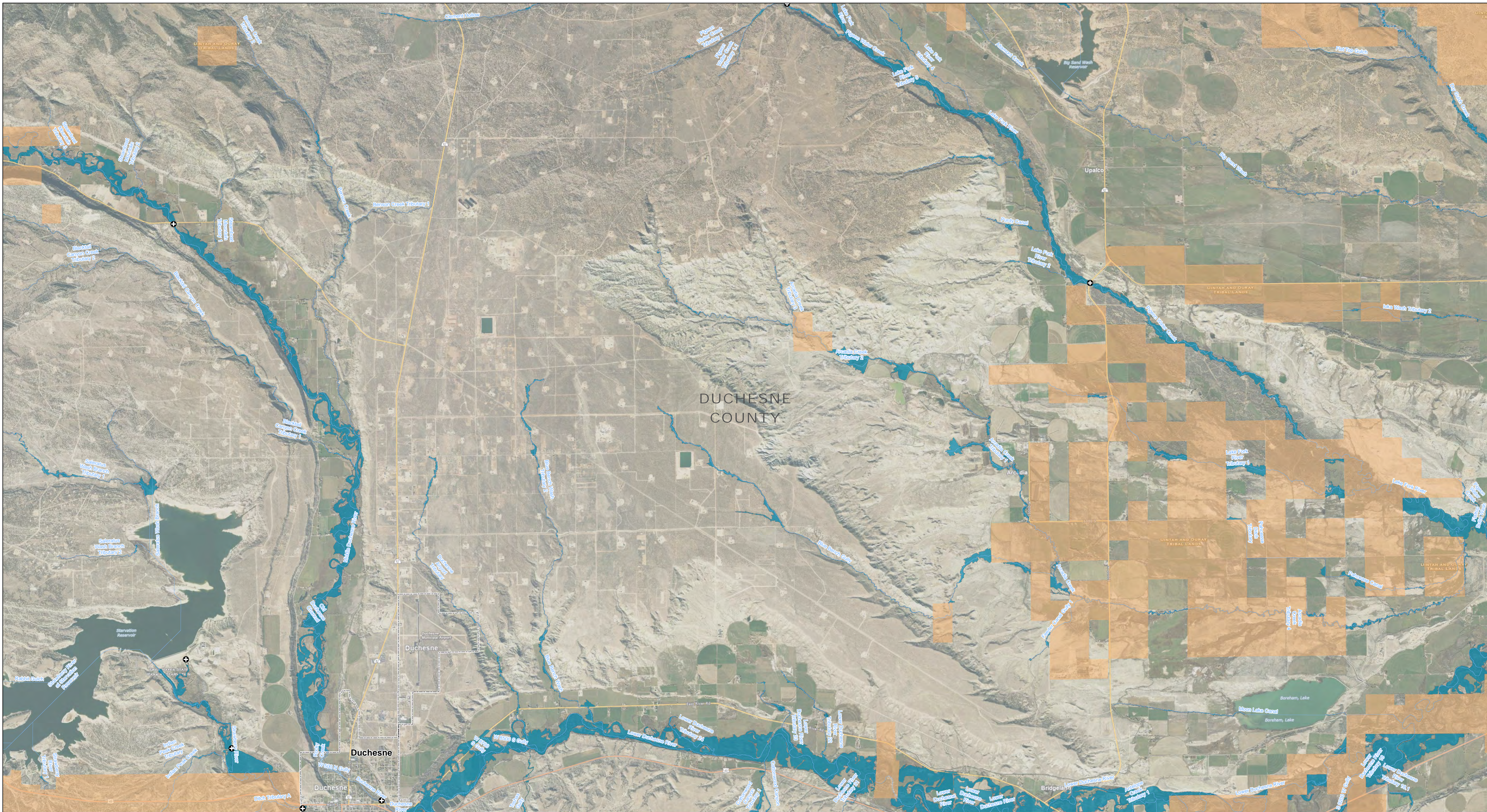
* Streams with a drainage area greater than 1 square mile

** Draft 2022 hydraulic analysis using new LiDAR topography (no ground survey conducted, Tribal Lands excluded).

All base information on this map sourced from public data, including the Utah Geospatial Resource Center (UGRC), FEMA, ESRI, and USGS.

Note: This map is not an official Flood Insurance Rate Map and the data presented on this map is for draft information only, to be used as best available data where applicable.





NATIONAL FLOOD INSURANCE PROGRAM
 WASATCH-UINTAH BASIN
 DAGGETT, DUCHEсне, SUMMIT, UINTAH, AND WASATCH COUNTIES, UTAH
 RISK MAP PROJECT

DISCOVERY WORK MAP
DRAFT

Map 18 Duchesne County - Unincorporated Areas

Draft Zone A Base Level Engineering (BLE) Results
 Utah Division of Emergency Management

RELEASE DATE
 07/06/2022

MAP SYMBOLOLOGY

- Stream Gauges
- Letters of Map Amendment (LOMA)
- Study Streams*
- LIDAR Acquisition Area (2018)/ Project Area
- Draft BLE Zone A**
- Draft Alluvial Fan
- Municipalities
- Counties
- Tribal Land**

Effective NFIP Floodplains

- Effective Zone AE (1%-annual-chance flood)
- Effective Zone A (1%-annual-chance flood)
- Effective Floodway (1%-annual-chance flood)
- Effective Zone AO (1%-annual-chance flood)
- Effective 0.2%-annual-chance flood

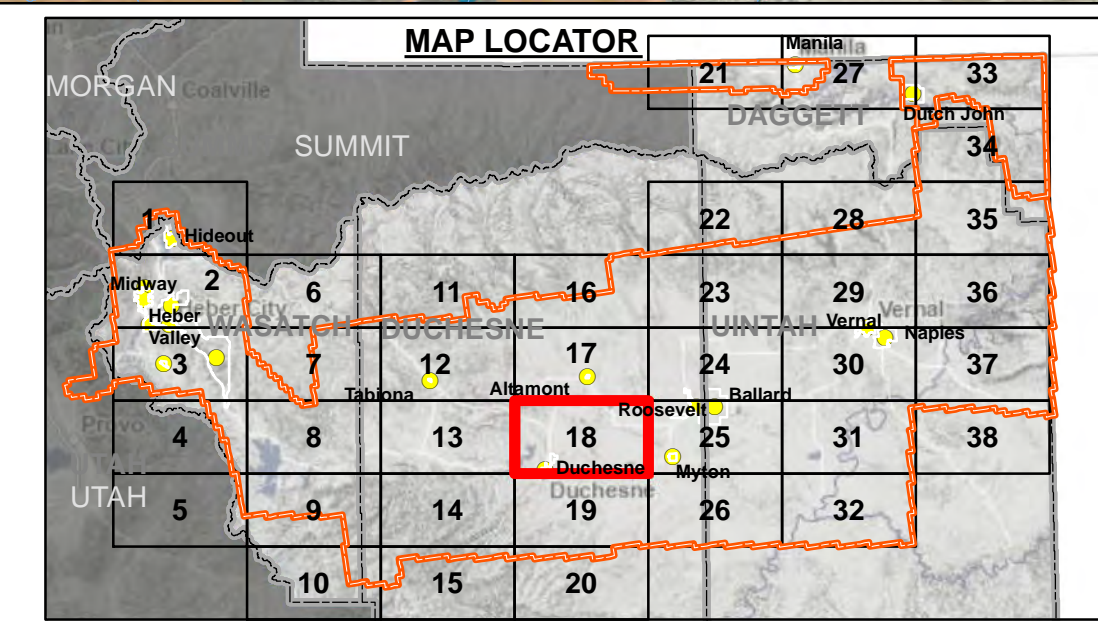
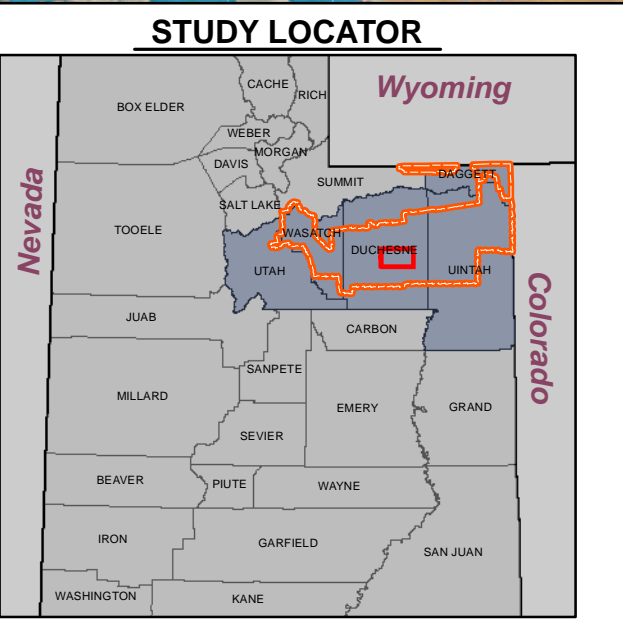
NOTES TO USERS

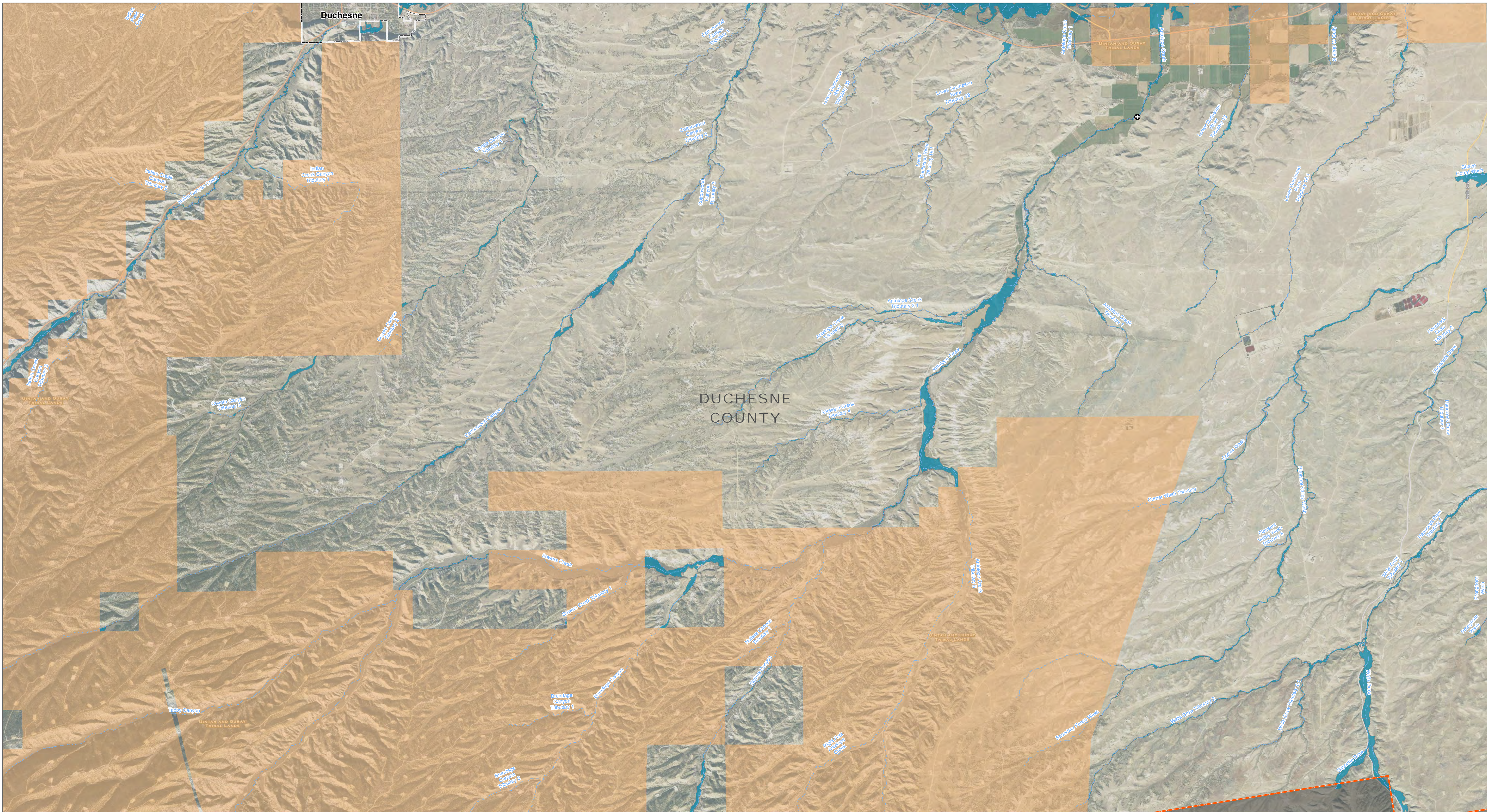
* Streams with a drainage area greater than 1 square mile

** Draft 2022 hydraulic analysis using new LIDAR topography (no ground survey conducted, Tribal Lands excluded).

All base information on this map sourced from public data, including the Utah Geospatial Resource Center (UGRC), FEMA, ESRI, and USGS.

Note: This map is not an official Flood Insurance Rate Map and the data presented on this map is for draft information only, to be used as best available data where applicable.





NATIONAL FLOOD INSURANCE PROGRAM
DISCOVERY WORK MAP
DRAFT
 WASATCH-UINTAH BASIN
 DAGGETT, DUCHESNE, SUMMIT, UINTAH, AND WASATCH COUNTIES, UTAH
 RISK MAP PROJECT
 Map 19 Duchesne County - Unincorporated Areas

Draft Zone A Base Level Engineering (BLE) Results
 Utah Division of Emergency Management

RELEASE DATE
 07/06/2022

MAP SYMBOLOLOGY

- Stream Gauges
- Letters of Map Amendment (LOMA)
- Study Streams*
- LIDAR Acquisition Area (2018)/ Project Area
- Draft BLE Zone A**
- Draft Alluvial Fan
- Municipalities
- Counties
- Tribal Land**

Effective NFIP Floodplains

- Effective Zone AE (1%-annual-chance flood)
- Effective Zone A (1%-annual-chance flood)
- Effective Floodway (1%-annual-chance flood)
- Effective Zone AO (1%-annual-chance flood)
- Effective 0.2%-annual-chance flood

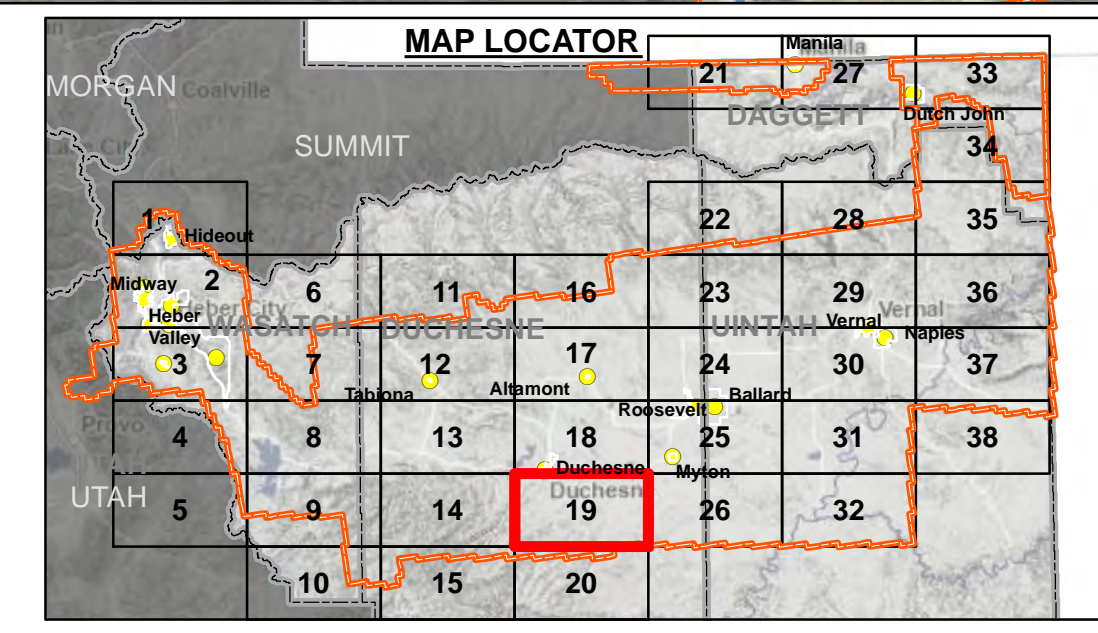
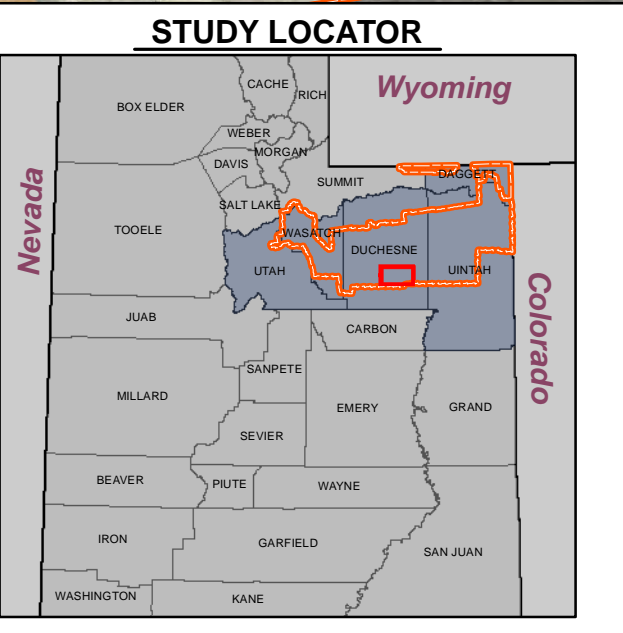
NOTES TO USERS

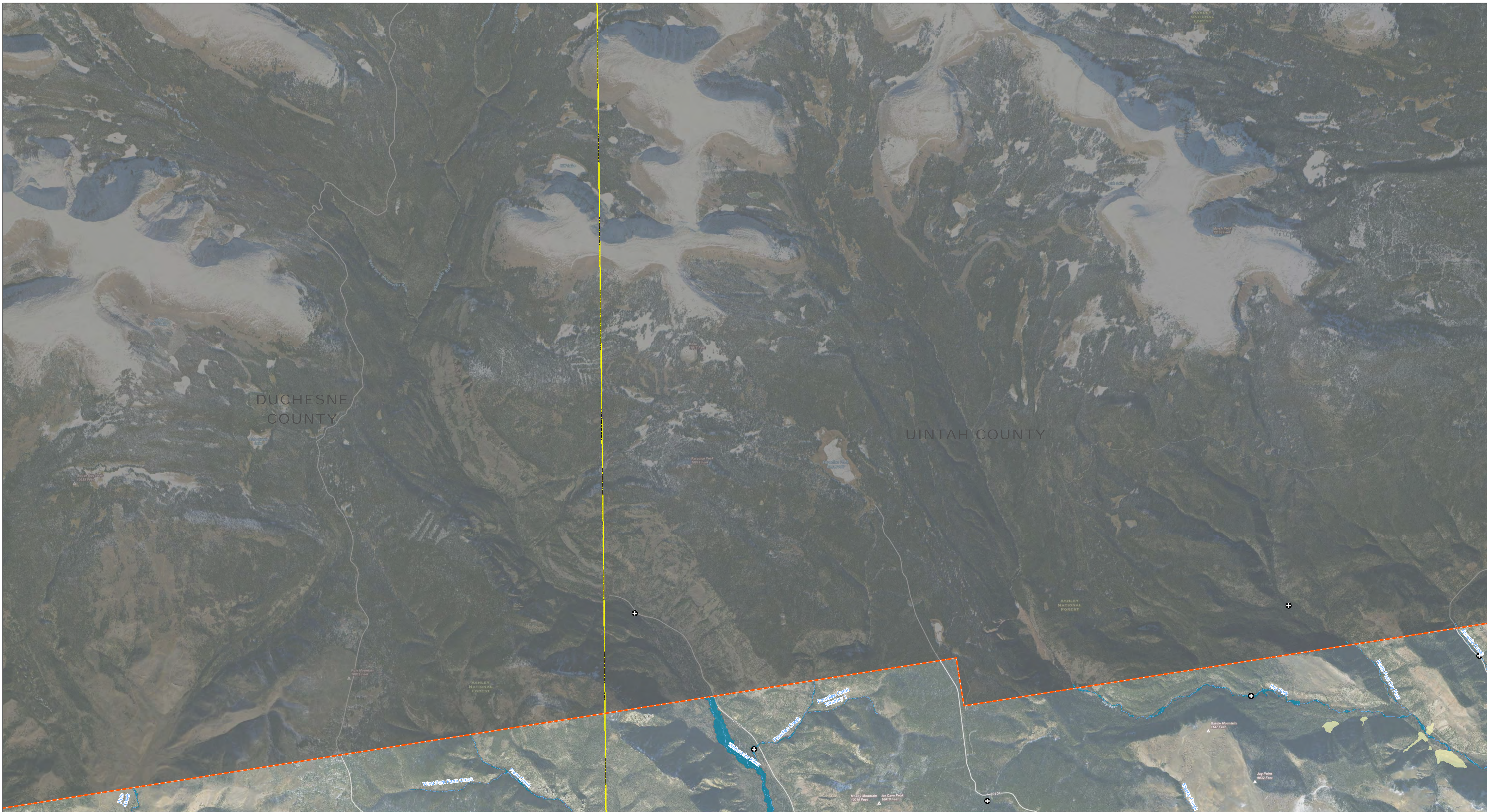
* Streams with a drainage area greater than 1 square mile

** Draft 2022 hydraulic analysis using new LIDAR topography (no ground survey conducted, Tribal Lands excluded).

All base information on this map sourced from public data, including the Utah Geospatial Resource Center (UGRC), FEMA, ESRI, and USGS.

Note: This map is not an official Flood Insurance Rate Map and the data presented on this map is for draft information only, to be used as best available data where applicable.





NATIONAL FLOOD INSURANCE PROGRAM
 WASATCH-UINTAH BASIN
 DAGGETT, DUCHESNE, SUMMIT, UINTAH, AND WASATCH COUNTIES, UTAH
 RISK MAP PROJECT

DISCOVERY WORK MAP
DRAFT

Map 22 Duchesne and Uintah County - Unincorporated Areas

Draft Zone A Base Level Engineering (BLE) Results
 Utah Division of Emergency Management

RELEASE DATE
 07/06/2022

MAP SYMBOLOLOGY

- Stream Gauges
- Letters of Map Amendment (LOMA)
- Study Streams*
- LiDAR Acquisition Area (2018)/Project Area
- Draft BLE Zone A**
- Draft Alluvial Fan
- Municipalities
- Counties
- Tribal Land**

Effective NFIP Floodplains

- Effective Zone AE (1%-annual-chance flood)
- Effective Zone A (1%-annual-chance flood)
- Effective Floodway (1%-annual-chance flood)
- Effective Zone AO (1%-annual-chance flood)
- Effective 0.2%-annual-chance flood

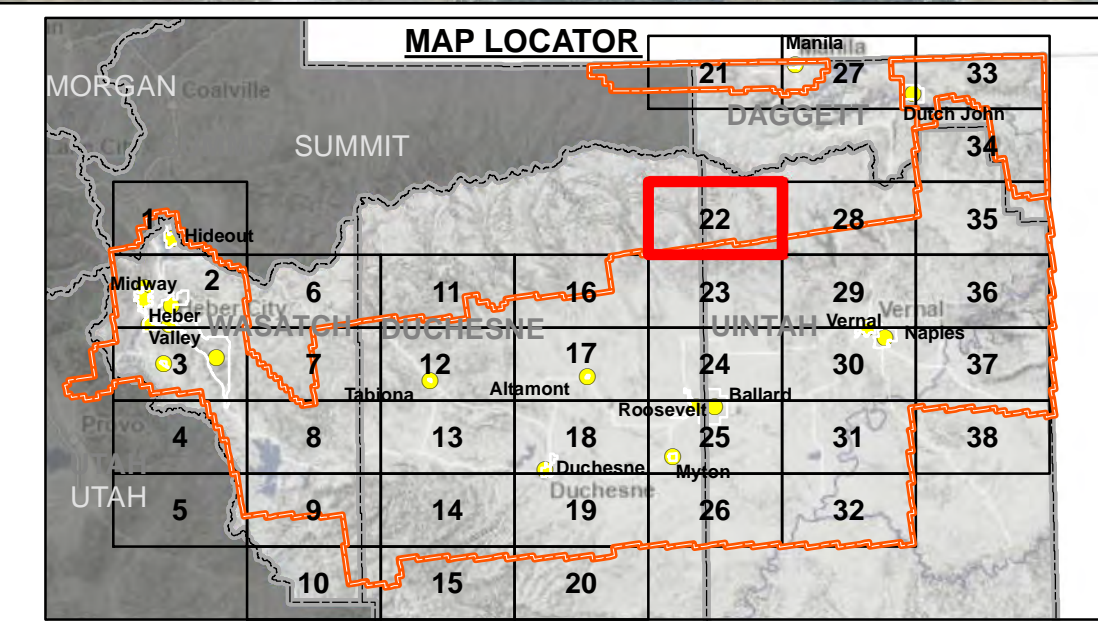
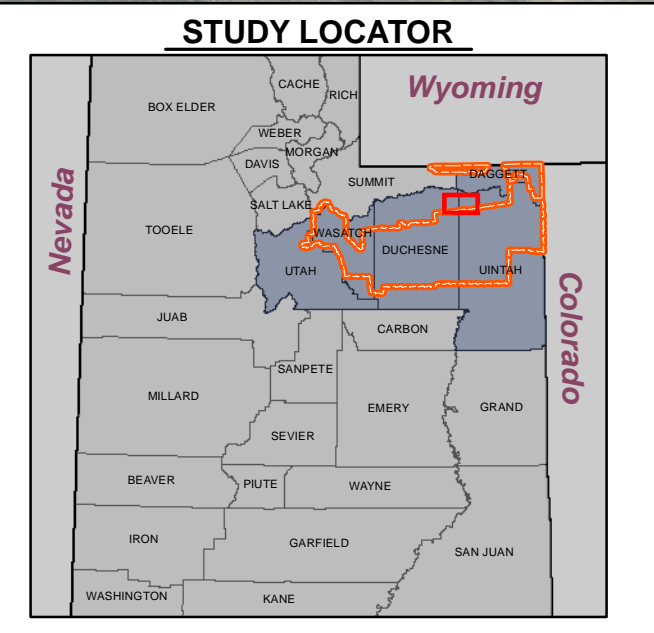
NOTES TO USERS

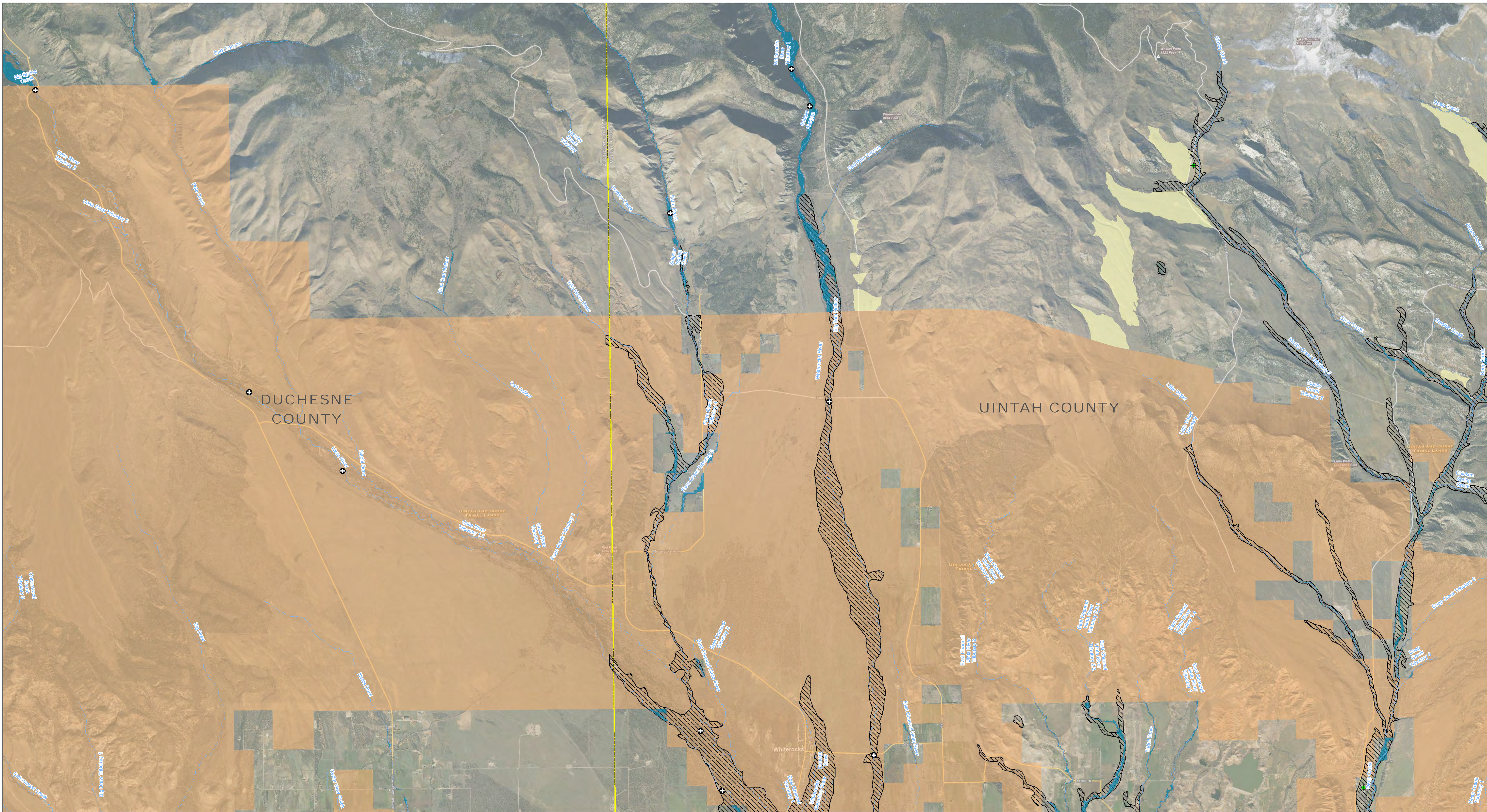
* Streams with a drainage area greater than 1 square mile

** Draft 2022 hydraulic analysis using new LiDAR topography (no ground survey conducted, Tribal Lands excluded).

All base information on this map sourced from public data, including the Utah Geospatial Resource Center (UGRC), FEMA, ESRI, and USGS.

Note: This map is not an official Flood Insurance Rate Map and the data presented on this map is for draft information only, to be used as best available data where applicable.





NATIONAL FLOOD INSURANCE PROGRAM
 WASATCH-UINTAH BASIN
 DAGGETT, DUCHESNE, SUMMIT, UINTAH, AND WASATCH COUNTIES, UTAH
 RISK MAP PROJECT
 Map 23 Duchesne and Uintah County - Unincorporated Areas

DISCOVERY WORK MAP
DRAFT

Draft Zone A Base Level Engineering (BLE) Results
 Utah Division of Emergency Management

RELEASE DATE
 07/06/2022

MAP SYMBOLOLOGY

- Stream Gauges
- Letters of Map Amendment (LOMA)
- Study Streams*
- LiDAR Acquisition Area (2018)/Project Area
- Draft BLE Zone A**
- Draft Alluvial Fan
- Municipalities
- Counties
- Tribal Land**

Effective NFIP Floodplains

- Effective Zone AE (1%-annual-chance flood)
- Effective Zone A (1%-annual-chance flood)
- Effective Floodway (1%-annual-chance flood)
- Effective Zone AO (1%-annual-chance flood)
- Effective 0.2%-annual-chance flood

0 300,000 600,000 1,200,000
 Feet

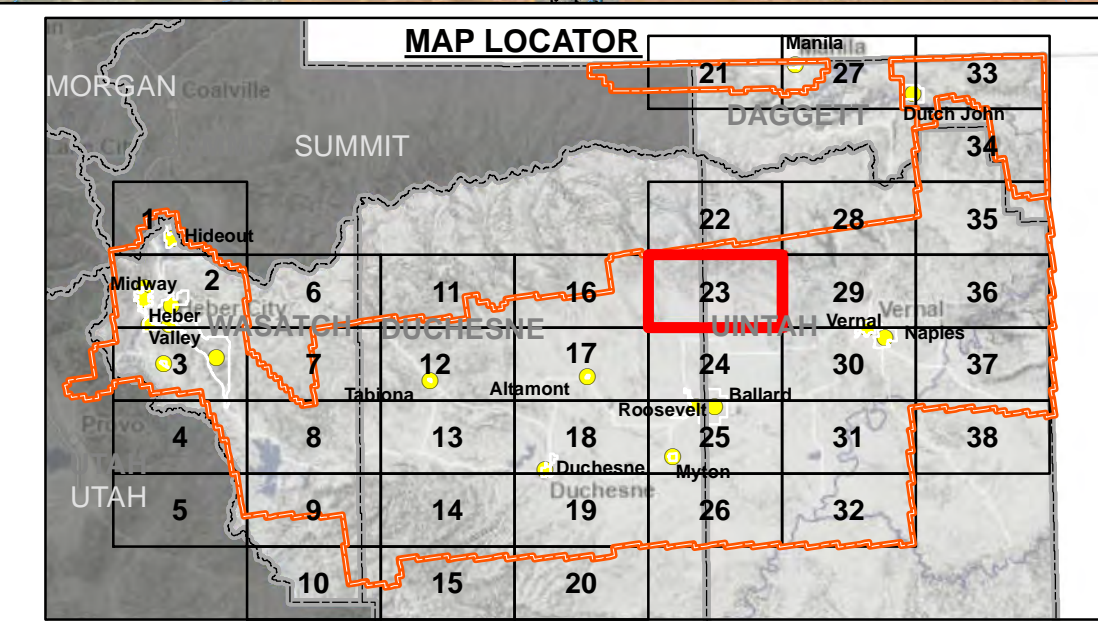
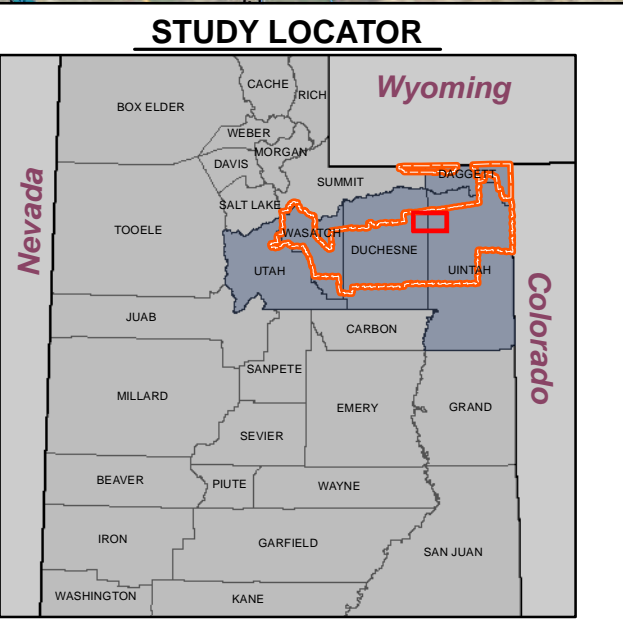
NOTES TO USERS

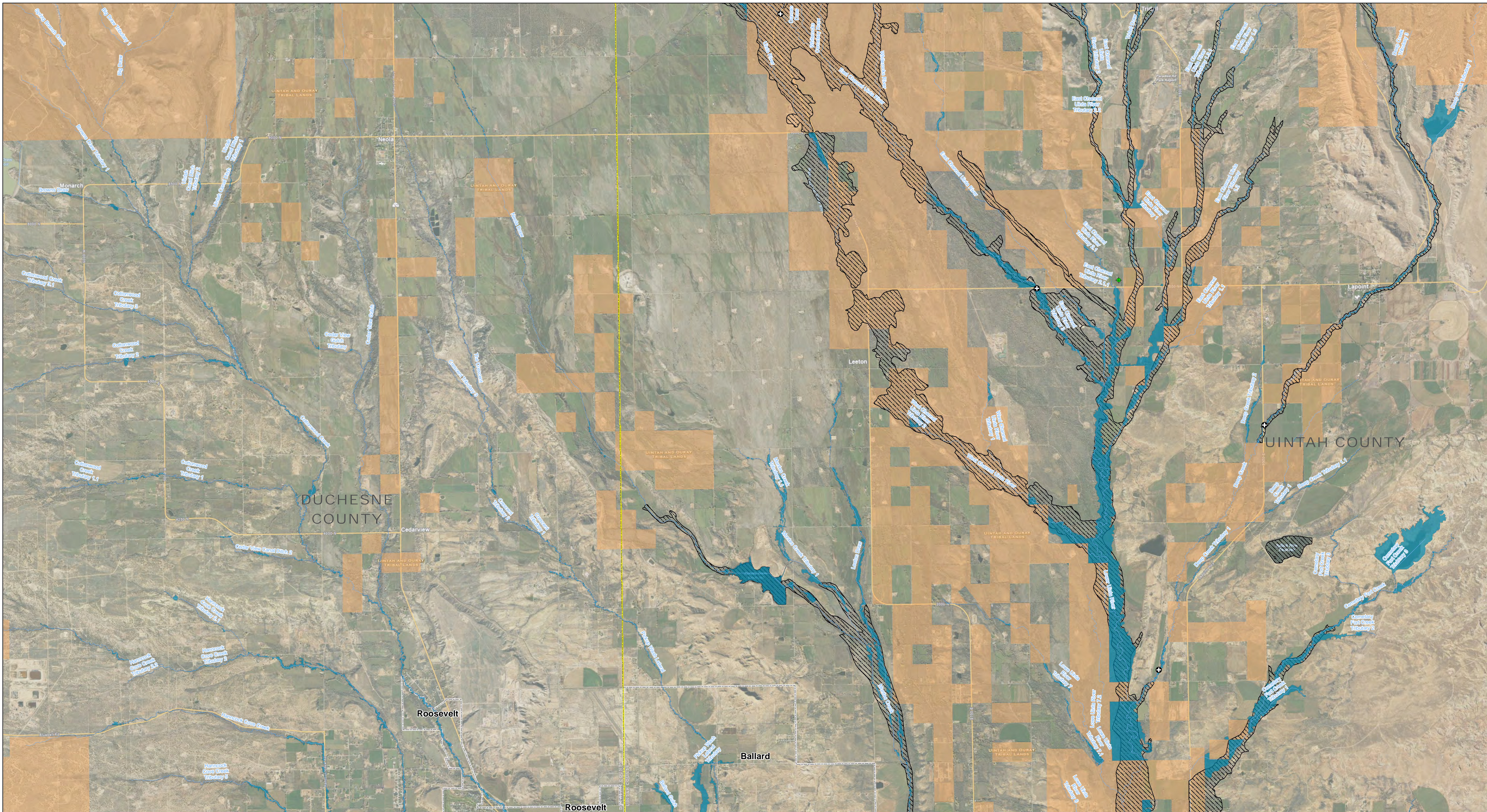
* Streams with a drainage area greater than 1 square mile

** Draft 2022 hydraulic analysis using new LiDAR topography (no ground survey conducted, Tribal Lands excluded).

All base information on this map sourced from public data, including the Utah Geospatial Resource Center (UGRC), FEMA, ESRI, and USGS.

Note: This map is not an official Flood Insurance Rate Map and the data presented on this map is for draft information only, to be used as best available data where applicable.





NATIONAL FLOOD INSURANCE PROGRAM
 WASATCH-UINTAH BASIN
 DAGGETT, DUCHESNE, SUMMIT, UINTAH, AND WASATCH COUNTIES, UTAH
 RISK MAP PROJECT

DISCOVERY WORK MAP
DRAFT

Draft Zone A Base Level Engineering (BLE) Results
 Utah Division of Emergency Management

Map 24 Duchesne and Uintah County - Unincorporated Areas

RELEASE DATE
 07/06/2022

MAP SYMBOLOLOGY

- Stream Gauges
- Letters of Map Amendment (LOMA)
- Study Streams*
- LIDAR Acquisition Area (2018)/ Project Area
- Draft BLE Zone A**
- Draft Alluvial Fan
- Municipalities
- Counties
- Tribal Land**

Effective NFIP Floodplains

- Effective Zone AE (1%-annual-chance flood)
- Effective Zone A (1%-annual-chance flood)
- Effective Floodway (1%-annual-chance flood)
- Effective Zone AO (1%-annual-chance flood)
- Effective 0.2%-annual-chance flood

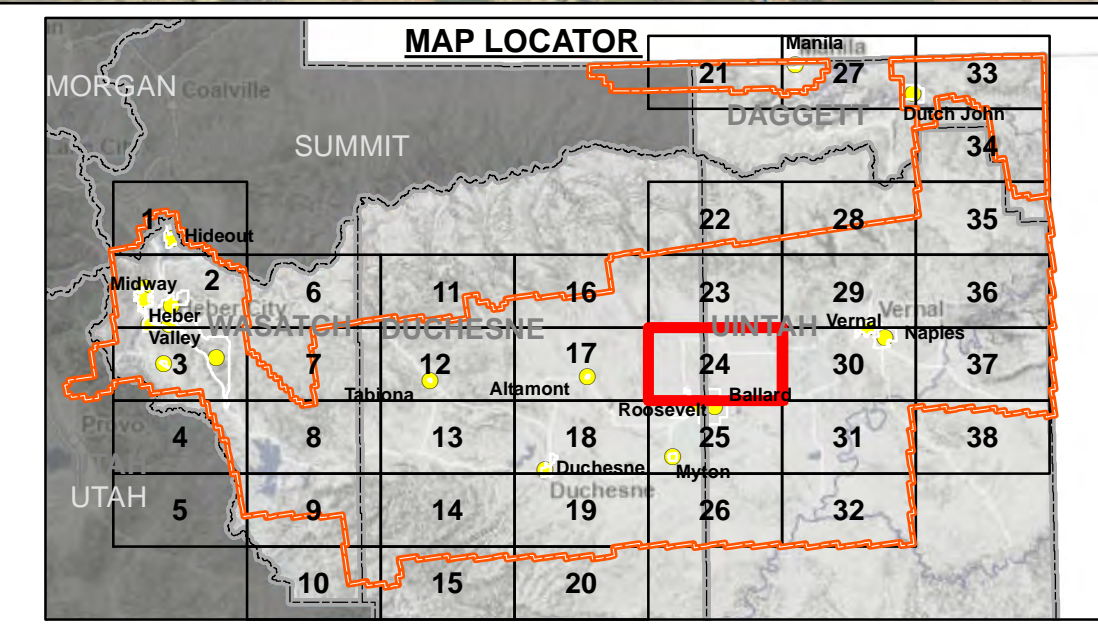
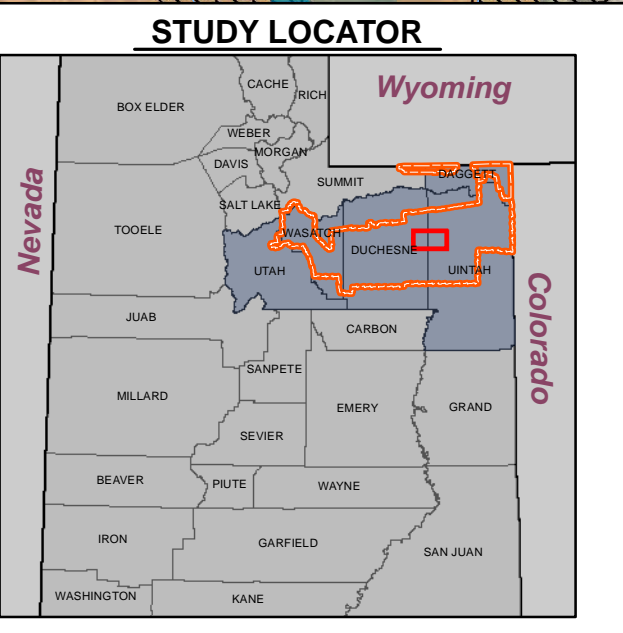
NOTES TO USERS

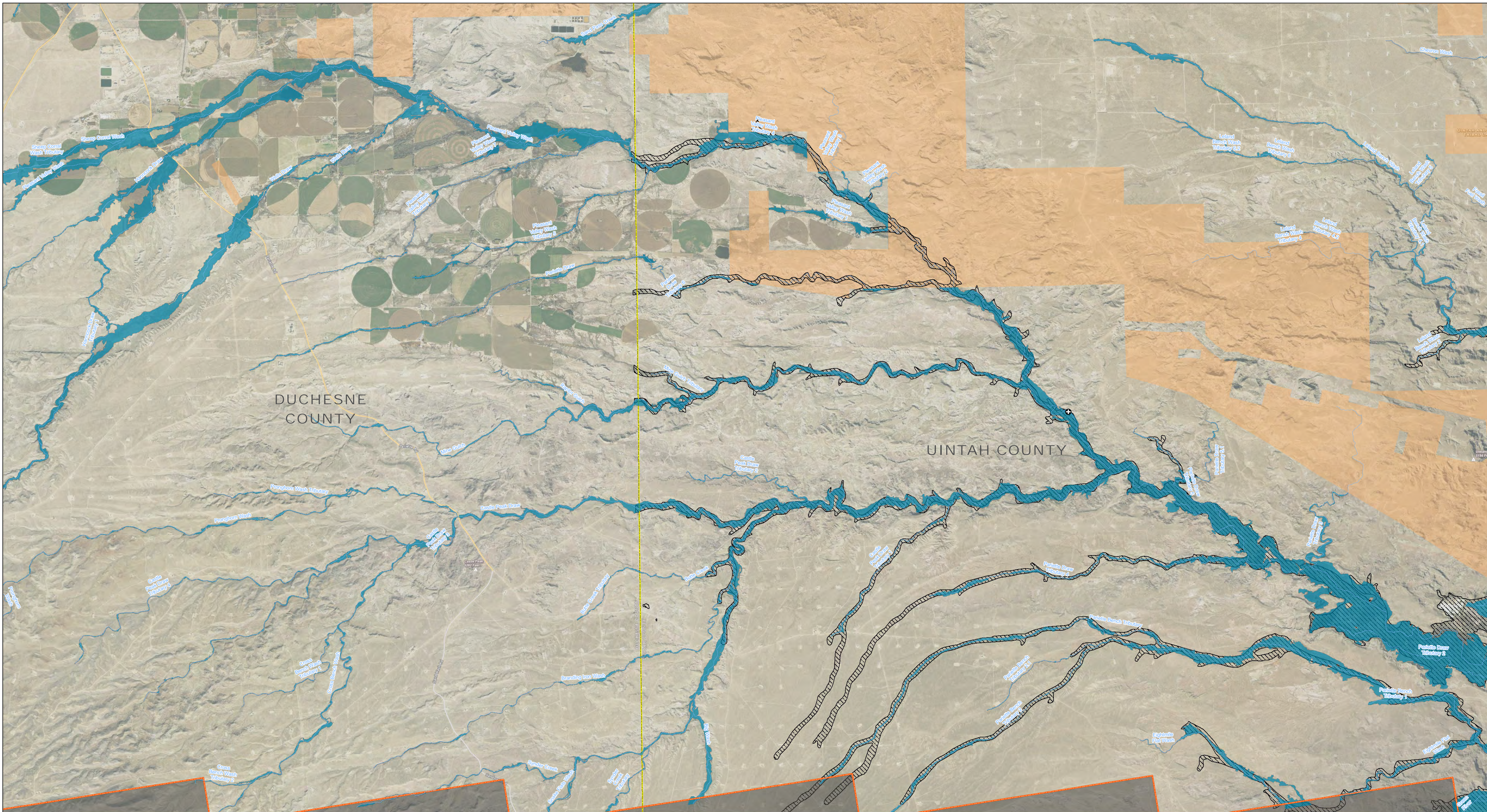
* Streams with a drainage area greater than 1 square mile

** Draft 2022 hydraulic analysis using new LIDAR topography (no ground survey conducted, Tribal Lands excluded).

All base information on this map sourced from public data, including the Utah Geospatial Resource Center (UGRC), FEMA, ESRI, and USGS.

Note: This map is not an official Flood Insurance Rate Map and the data presented on this map is for draft information only, to be used as best available data where applicable.





NATIONAL FLOOD INSURANCE PROGRAM
 WASATCH-UINTAH BASIN
 DAGGETT, DUCHESNE, SUMMIT, UINTAH, AND WASATCH COUNTIES, UTAH
 RISK MAP PROJECT

DISCOVERY WORK MAP
DRAFT

Draft Zone A Base Level Engineering (BLE) Results
 Utah Division of Emergency Management

RELEASE DATE
 07/06/2022

MAP SYMBOLOLOGY

- Stream Gauges
- Letters of Map Amendment (LOMA)
- Study Streams*
- LIDAR Acquisition Area (2018)/ Project Area
- Draft BLE Zone A**
- Draft Alluvial Fan
- Municipalities
- Counties
- Tribal Land**

Effective NFIP Floodplains

- Effective Zone AE (1%-annual-chance flood)
- Effective Zone A (1%-annual-chance flood)
- Effective Floodway (1%-annual-chance flood)
- Effective Zone AO (1%-annual-chance flood)
- Effective 0.2%-annual-chance flood

NOTES TO USERS

* Streams with a drainage area greater than 1 square mile

** Draft 2022 hydraulic analysis using new LIDAR topography (no ground survey conducted, Tribal Lands excluded).

All base information on this map sourced from public data, including the Utah Geospatial Resource Center (UGRC), FEMA, ESRI, and USGS.

Note: This map is not an official Flood Insurance Rate Map and the data presented on this map is for draft information only, to be used as best available data where applicable.

