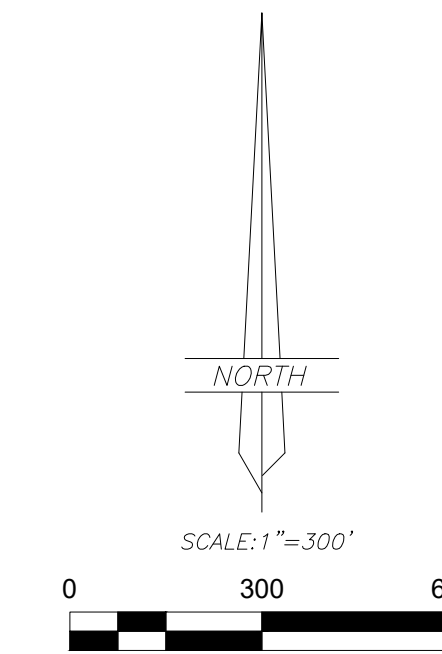


# RECORD OF SURVEY FOR MARTA GARCIA

SECTION 2, TOWNSHIP 4 SOUTH, RANGE 9 WEST  
UINTAH SPECIAL BASE AND MERIDIAN



### LEGEND

- FOUND OR SET SECTION CORNER AS NOTED ON PLAT
- FOUND OR SET QUARTER CORNER AS NOTED ON PLAT
- FOUND OR SET 1/16 CORNER AS NOTED ON PLAT
- FOUND MONUMENT SET BY OTHERS
- SET 5/8"x24" REBAR WITH PLASTIC CAP STAMPED "ALLRED SURVEY"
- 8" SPIKES WITH "WHISKERS" SET ON LINE
- FENCE CORNER
- EXISTING FENCE
- MAG SPIKE AND WASHER

### NARRATIVE AND NOTES

This survey was performed at the request of Marta Garcia for the purpose of locating on the ground the corners of the parcels shown on this plat. A search was made for the monuments marking the Public Lands Survey System corners and the results are noted next to the corners on the plat. These found and reestablished corners were used to control the survey. This plat represents a dependent resurvey of portions of Section 2 using the Statutory Method of subdivision and is designed to restore the corners to their true original location according to the best available evidence.

THIS SURVEY WAS PERFORMED BY USING G.P.S. (GLOBAL POSITIONING SYSTEM) EQUIPMENT AND PROCEDURES. THE BASIS OF BEARINGS IS BASED ON NGS-84 GEODETIC NORTH DETERMINED BY G.P.S. OBSERVATIONS AND CALIBRATION AT A CONTROL POINT LOCATED AT LAT: 40°11'44.89846"N AND LONG: 110°49'41.53893"W AS DETERMINED BY THE UTAH STATE GPS VIRTUAL REFERENCE STATION CONTROL NETWORK MAINTAINED AND OPERATED BY THE UTAH GEOSPATIAL RESOURCE CENTER.

### SURVEYOR'S CERTIFICATE

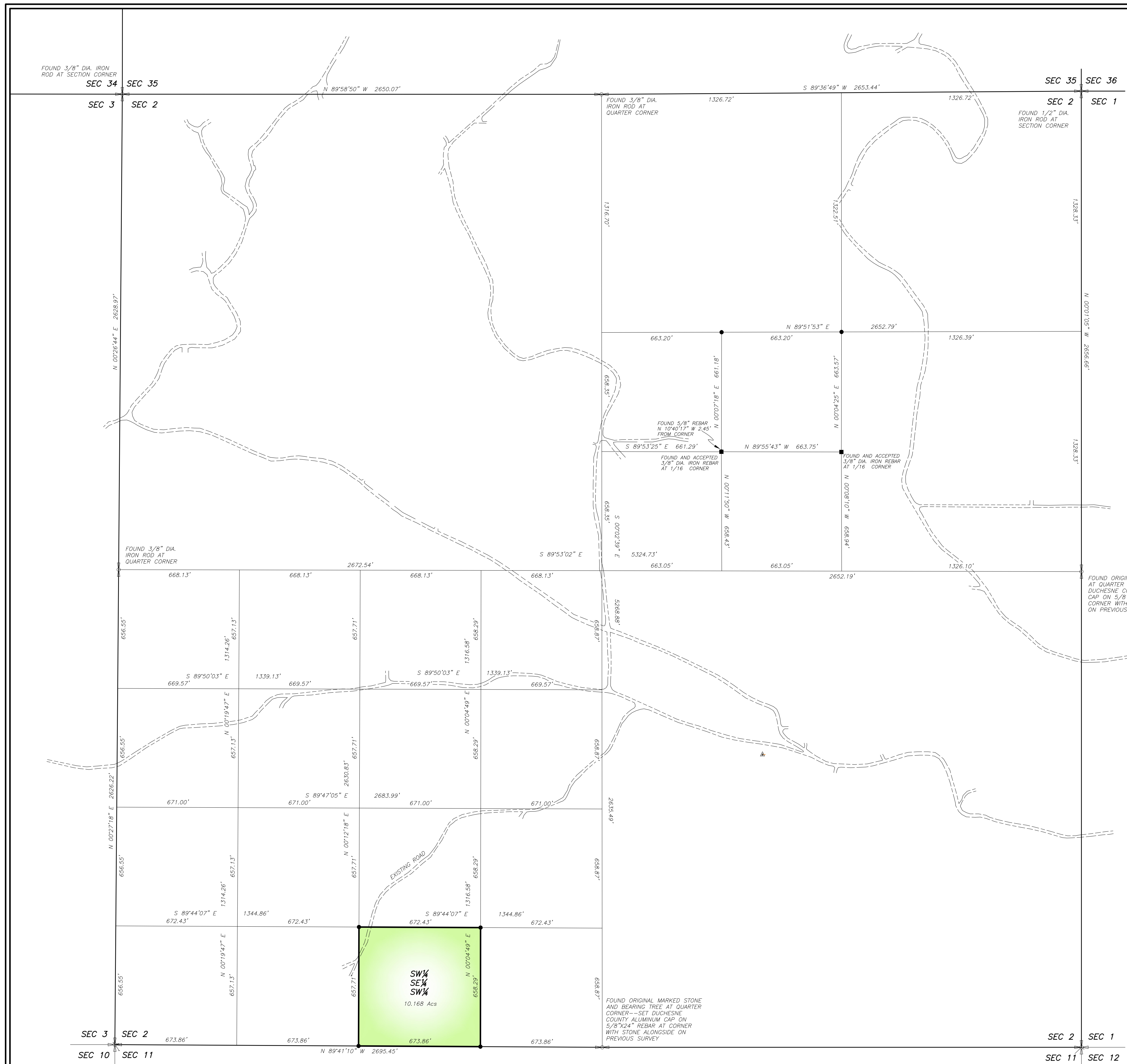
I, Jerry D. Allred, do hereby certify that I am a Professional Land Surveyor, and that I hold certificate no. 148951 as prescribed by the laws of the State of Utah. I further certify that this plat and its computations were prepared from the field notes and electronic data collector files of an actual survey made by me, or under my personal supervision, of the parcels of land shown hereon, and that the monuments indicated were found or set during said survey, and that this plat accurately represents said survey to the best of my knowledge.



JERRY D. ALLRED, PROFESSIONAL LAND SURVEYOR  
CERTIFICATE NO. 148951 (UTAH)

COUNTY SURVEYOR FILE NO. 5350

**JERRY D. ALLRED & ASSOCIATES, INC.**  
SURVEYING CONSULTANTS  
1235 NORTH 700 EAST—P.O. BOX 975  
DUCHESE, UTAH 84021  
(435) 738-5352



FOUND ORIGINAL MARKED STONE AND BEARING TREE AT QUARTER CORNER—SET DUCHESE COUNTY ALUMINUM CAP ON 5/8"x24" REBAR AT CORNER WITH STONE ALONGSIDE ON PREVIOUS SURVEY

FOUND 3/8" DIA. IRON ROD AT QUARTER CORNER

FOUND 3/8" DIA. IRON ROD AT QUARTER CORNER

FOUND 1/2" DIA. IRON ROD AT SECTION CORNER

FOUND 5/8" REBAR N 10°45'17" W 2.45' FROM CORNER  
FOUND AND ACCEPTED 3/8" DIA. IRON REBAR AT 1/16 CORNER  
FOUND AND ACCEPTED 1/2" DIA. IRON REBAR AT 1/16 CORNER

FOUND ORIGINAL MARKED STONE AT QUARTER CORNER—SET DUCHESE COUNTY ALUMINUM CAP ON 5/8"x24" REBAR AT CORNER WITH STONE ALONGSIDE ON PREVIOUS SURVEY

SW 1/4 SEC 2 SW 1/4  
10.168 Acs

FOUND ORIGINAL SET STONE WITH BEARING TREES, SET DUCHESE COUNTY ALUMINUM CAP AND PIPE MONUMENT AT CORNER WITH STONE ALONGSIDE