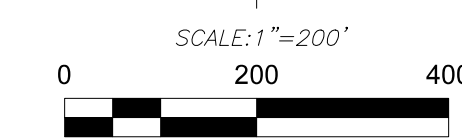
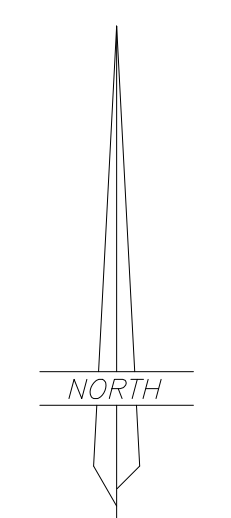


RECORD OF SURVEY FOR
FERNANDO GARCIA
 LOT 7-31A UINTAH VIEW RANCHES
 SECTION 7, TOWNSHIP 3 SOUTH, RANGE 4 WEST
 UINTAH SPECIAL BASE & MERIDIAN
 DUCHESNE COUNTY, UTAH



- LEGEND**
- FOUND OR SET SECTION CORNER AS NOTED ON PLAT
 - FOUND OR SET QUARTER CORNER AS NOTED ON PLAT
 - FOUND OR SET 1/16 CORNER AS NOTED ON PLAT
 - FOUND MONUMENTS PREVIOUSLY SET OR SET BY OTHERS
 - SET 5/8" X 24" REBAR WITH PLASTIC CAP STAMPED "ALLRED SURVEYING"
 - 8" SPIKES WITH "WHISKERS" SET ON LINE
 - FENCE CORNER
 - EXISTING FENCE
 - MAG SPIKE AND WASHER
 - HIGHWAY RIGHT-OF-WAY MARKERS

BASIS OF BEARINGS

THIS SURVEY WAS PERFORMED USING GLOBAL POSITIONING SYSTEM PROCEDURES AND EQUIPMENT

THE BASIS OF BEARINGS IS GEODETIC NORTH DERIVED FROM G.P.S. OBSERVATIONS AT THE SECTION CORNER LOCATED AT LAT. 40°15'22.90258"N AND LONG. 110°23'21.19760"W USING THE UTAH STATE G.P.S. VIRTUAL REFERENCE STATION CONTROL NETWORK MAINTAINED AND OPERATED BY THE UTAH GEOSPATIAL RESOURCE CENTER

NARRATIVE

This survey was performed at the request of Fernando Garcia for the purpose of marking the corners and lines of Lot 7-31A, UINTAH VIEW RANCHES Subdivision as shown on this plat. The data from the Subdivision plat was used to guide the search for any existing monuments marking the original lot corners, with the results being noted on the plat by each corner found. These found monuments were used to control the survey.

SURVEYOR'S CERTIFICATE

I, Jerry D. Allred, do hereby certify that I am a Professional Land Surveyor, and that I hold certificate no. 148951 as prescribed by the laws of the State of Utah. I further certify that this plat and its computations were prepared from the field notes and electronic data collector files of an actual survey made by me, or under my personal supervision, of the parcels of land shown hereon, and that the monuments indicated were found or set during said survey, and that this plat accurately represents said survey to the best of my knowledge.

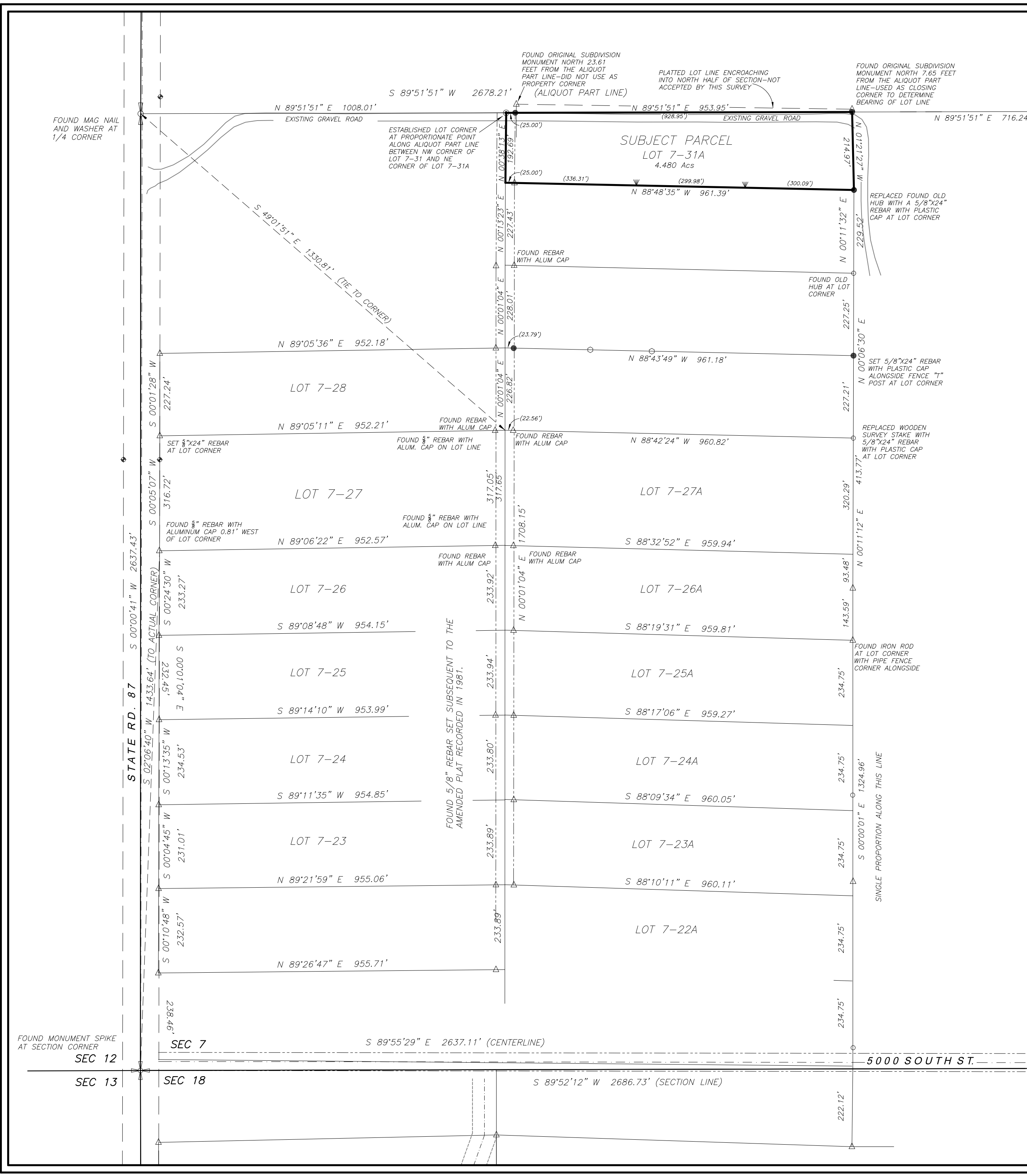


JERRY D. ALLRED, PROFESSIONAL LAND SURVEYOR
 CERTIFICATE NO. 148951 (UTAH)

COUNTY SURVEYOR FILE NO. 6120

JERRY D. ALLRED & ASSOCIATES, INC.
 SURVEYING CONSULTANTS
 1235 NORTH 700 EAST--P.O. BOX 975
 DUCHESNE, UTAH 84021
 (435) 738-5352

4 MAY 2026 26-100-045



FOUND COUNTY MONUMENT AT QUARTER CORNER PREVIOUSLY