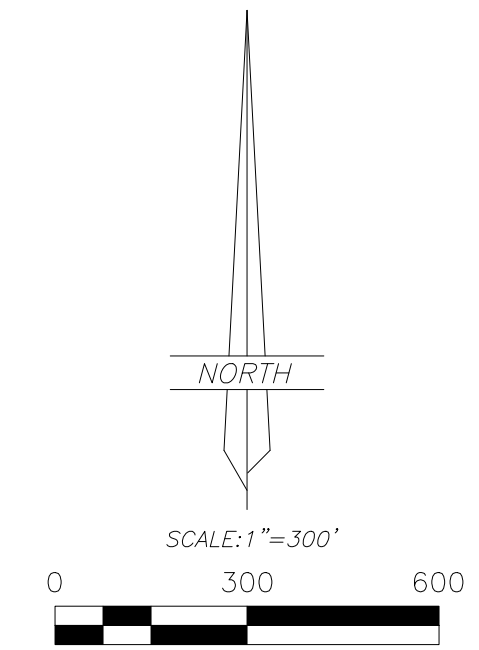


RECORD OF SURVEY FOR
CORLINNA SMITH
 SECTION 13, TOWNSHIP 3 SOUTH, RANGE 4 WEST
 UTAH SPECIAL BASE AND MERIDIAN
 DUCHESNE COUNTY, UTAH



LEGEND

- FOUND OR SET SECTION CORNER AS NOTED ON PLAT
- FOUND OR SET QUARTER CORNER AS NOTED ON PLAT
- FOUND OR SET 1/16 CORNER AS NOTED ON PLAT
- FOUND MONUMENT SET BY OTHERS
- SET 5/8"x24" REBAR WITH PLASTIC CAP STAMPED "ALLRED SURVEY"
- 8" SPIKES WITH "WHISKERS" SET ON LINE
- FENCE CORNER
- EXISTING FENCE
- MAG SPIKE AND WASHER

BASIS OF BEARINGS

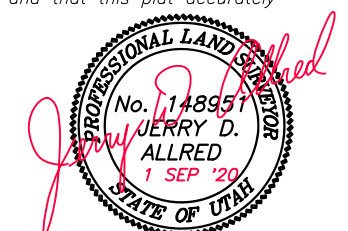
THIS SURVEY WAS PERFORMED USING GLOBAL POSITIONING SYSTEM (G.P.S.) EQUIPMENT AND PROCEDURES USING THE UTAH G.P.S. VIRTUAL REFERENCE STATION NETWORK MAINTAINED AND OPERATED BY THE UTAH GEOSPATIAL RESOURCE CENTER. THE BASIS OF BEARINGS IS GEODETIC NORTH DERIVED FROM G.P.S. OBSERVATIONS AT A CONTROL POINT (S.W. SECTION CORNER) LOCATED AT LAT: 40°12'49.87445" N & LONG: 110°17'37.96138" W USING SAID CONTROL NETWORK.

NARRATIVE

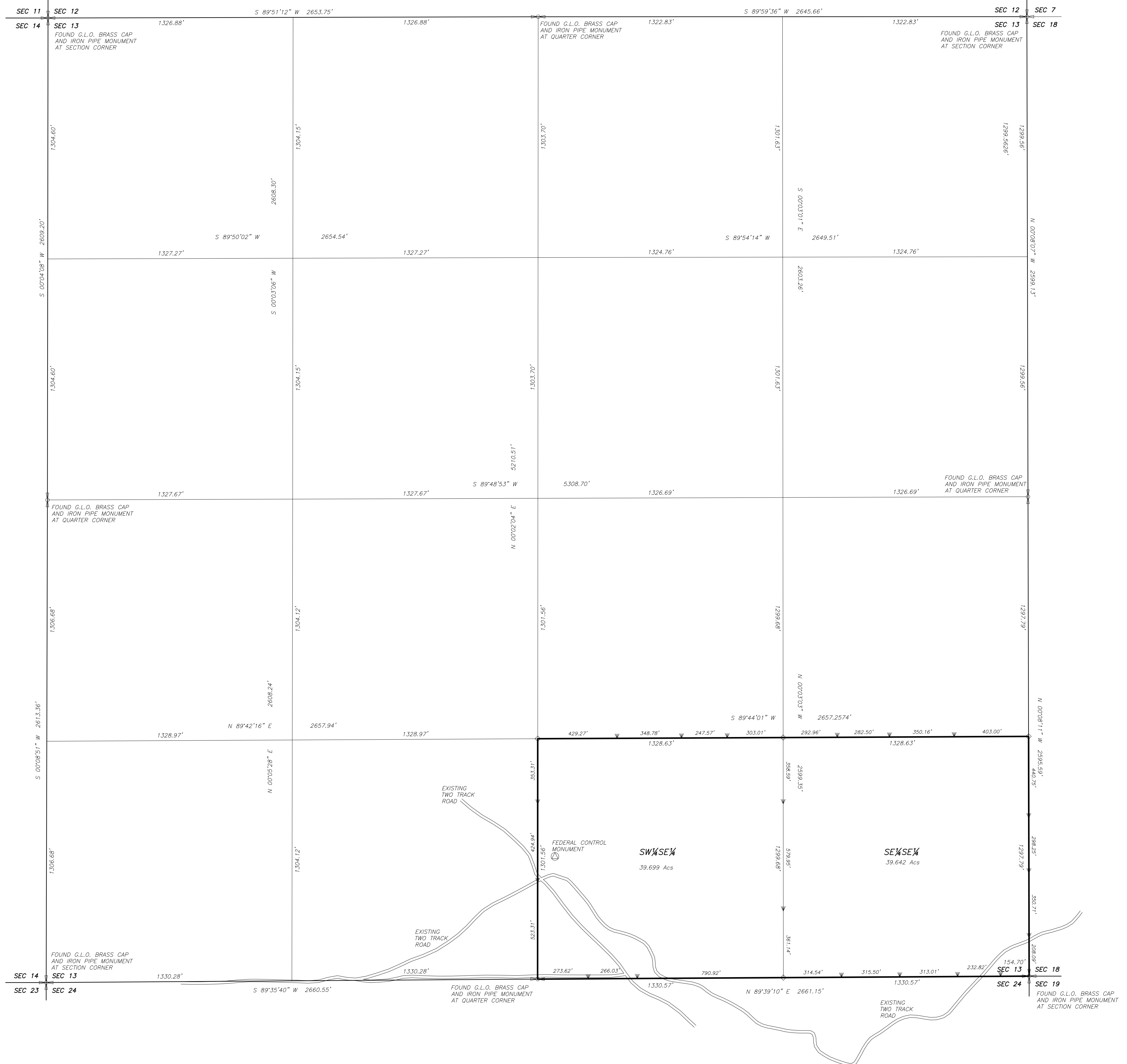
This survey was performed at the request of Corinna Smith for the purpose of locating and marking on the ground the boundary lines of her parcel as shown on this plat. The monuments marking the corners of the Public Land Survey System were found as shown and used to control the survey. Section 13, was originally surveyed by the General Land Office using the statutory method of section subdivision and that method has been used by this survey.

SURVEYOR'S CERTIFICATE

I, Jerry D. Allred, do hereby certify that I am a Professional Land Surveyor, and that I hold certificate no. 148951 as prescribed by the laws of the State of Utah. I further certify that this plat and its computations were prepared from the field notes and electronic data collector files of an actual survey made by me, or under my personal supervision, of the parcels of land shown herein, and that the monuments indicated were found or set during said survey, and that this plat accurately represents said survey to the best of my knowledge.



JERRY D. ALLRED, PROFESSIONAL LAND SURVEYOR
 CERTIFICATE NO. 148951 (UTAH)



COUNTY SURVEYOR FILE NO. **5330**

JERRY D. ALLRED & ASSOCIATES, INC.
 SURVEYING CONSULTANTS
 1235 NORTH 700 EAST—P.O. BOX 975
 DUCHESNE, UTAH 84021
 (435) 738-5332