

LEGEND AND NOTES

- ▲ FOUND ORIGINAL LOT CORNERS
- SET 5/8"x24" REBAR WITH PLASTIC CAP STAMPED ALLRED SURVEYING
- 5/8"x24" REBAR SET ON PREVIOUS SURVEYS
- ▼ SET 8" SPIKES WITH "WHISKERS" AT POINTS ON LINE

THIS SURVEY WAS PERFORMED USING GLOBAL POSITIONING SYSTEM (G.P.S.) EQUIPMENT AND PROCEDURES USING THE UTAH STATE GPS VIRTUAL REFERENCE STATION CONTROL NETWORK MAINTAINED AND OPERATED BY THE AUTOMATED GEOGRAPHIC REFERENCE CENTER.

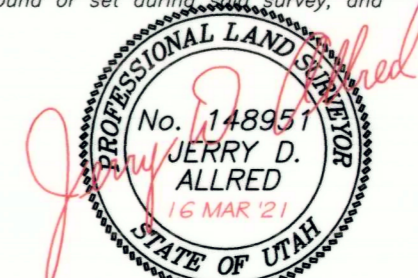
NARRATIVE

This survey was performed at the request of Brad Lewis for the purpose of locating on the ground the corners to Lot 17-21 as shown on this plat. This lot is located in the UTAH VIEW RANCHES SUBDIVISION. The data shown on the original subdivision plat was used to search for the original lot corners. Several of these corners were found as indicated. Those that could not be found were reset as noted. This plat represents the dependent resurvey of portions of UTAH VIEW RANCHES and is designed to restore the lot corners to their true original locations according to the best available evidence.

**RECORD OF SURVEY FOR
BRAD LEWIS**
LOT 17-21 UTAH VIEW RANCHES SUBDIVISION
SECTION 17, T3S, R4W, U.S.B.&M.
DUCHEсне COUNTY, UTAH

SURVEYOR'S CERTIFICATE

I, Jerry D. Allred, do hereby certify that I am a Professional Land Surveyor, and that I hold certificate no. 148951 as prescribed by the laws of the State of Utah. I further certify that this plat and its computations were prepared from the field notes and electronic data collector files of an actual survey made by me, or under my personal supervision, of the parcels of land shown hereon, and that the monuments indicated were found or set during the survey, and that this plat accurately represents said survey to the best of my knowledge.



Jerry D. Allred, Professional Land Surveyor,
Certificate 148951 (Utah)

COUNTY SURVEYOR FILE NO. 4804
JERRY D. ALLRED & ASSOCIATES, INC.
SURVEYING CONSULTANTS
1235 NORTH 700 EAST—P.O. BOX 975
DUCHEсне, UTAH 84021
(435) 759-5352