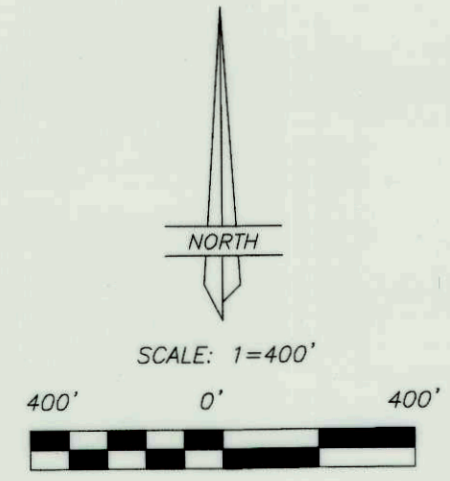


PIPELINE "AS-BUILT" SURVEY FOR
KINDER MORGAN ALTAMONT, LLC.
PENFIELD 2-10C4
 SECTION 10, TOWNSHIP 3 SOUTH, RANGE 4 WEST
 UINTAH SPECIAL BASE AND MERIDIAN
 DUCHESNE COUNTY, UTAH

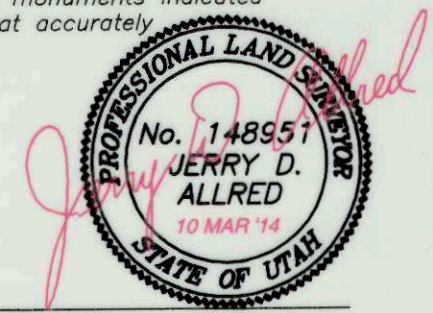


THIS SURVEY WAS PERFORMED USING GLOBAL POSITIONING SYSTEM PROCEDURES AND EQUIPMENT

THE BASIS OF BEARINGS IS GEODETIC NORTH DERIVED FROM G.P.S. OBSERVATIONS AT THE SECTION CORNER LOCATED AT LAT. 40°15'22.90258"N AND LONG. 110°23'21.19760"W USING THE UTAH STATE G.P.S. VIRTUAL REFERENCE STATION CONTROL NETWORK MAINTAINED AND OPERATED BY THE AUTOMATED GEOGRAPHIC REFERENCE CENTER

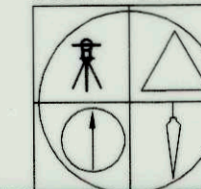
SURVEYOR'S CERTIFICATE

This is to certify that this plat was prepared from the field notes and electronic data collector files of an actual survey made by me, or under my personal supervision of the pipeline shown hereon, and that the monuments indicated were found or set during said survey, and that this plat accurately represents said survey to the best of my knowledge.



Jerry D. Allred, Professional Land Surveyor,
 Certificate 148951 (Utah)

COUNTY SURVEYOR'S FILE NO:

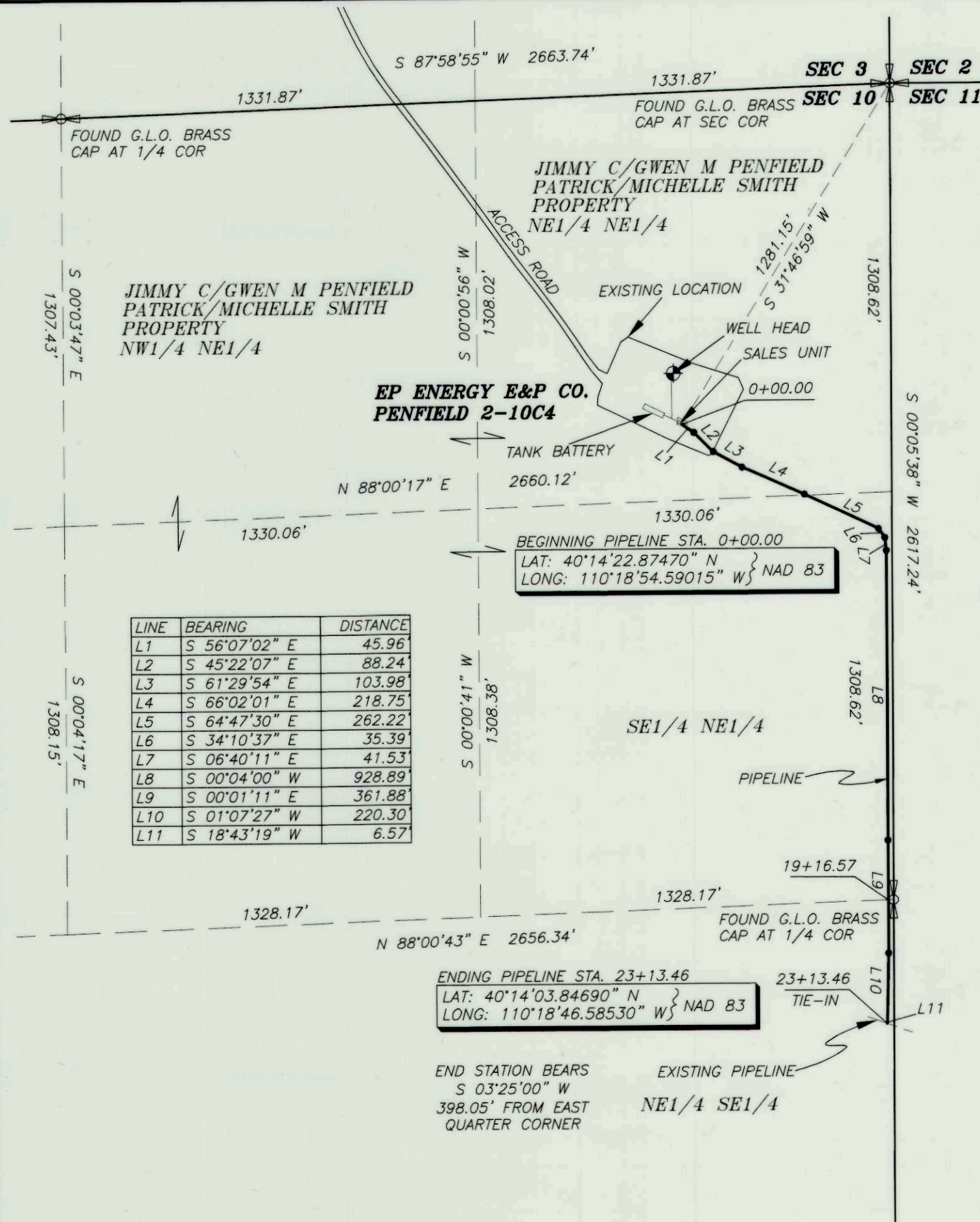


JERRY D. ALLRED AND ASSOCIATES
 SURVEYING CONSULTANTS

1235 NORTH 700 EAST--P.O. BOX 975
 DUCHESNE, UTAH 84021
 (435) 738-5352

10 MAR 2014 12-121-162

County Surveyors File # 2948



LINE	BEARING	DISTANCE
L1	S 56°07'02" E	45.96'
L2	S 45°22'07" E	88.24'
L3	S 61°29'54" E	103.98'
L4	S 66°02'01" E	218.75'
L5	S 64°47'30" E	262.22'
L6	S 34°10'37" E	35.39'
L7	S 06°40'11" E	41.53'
L8	S 00°04'00" W	928.89'
L9	S 00°01'11" E	361.88'
L10	S 01°07'27" W	220.30'
L11	S 18°43'19" W	6.57'

ENDING PIPELINE STA. 23+13.46
 LAT: 40°14'03.84690" N } NAD 83
 LONG: 110°18'46.58530" W }

END STATION BEARS
 S 03°25'00" W
 398.05' FROM EAST
 QUARTER CORNER

EXISTING PIPELINE
 NE1/4 SE1/4