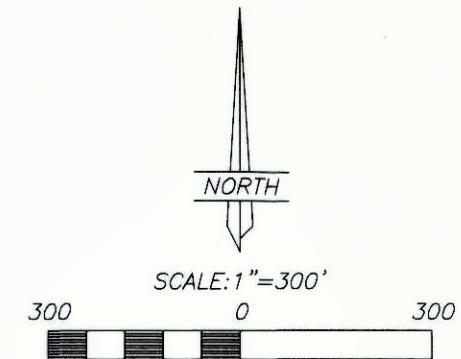


PIPELINE AS-BUILT SURVEY FOR
KINDER MORGAN ALTAMONT, LLC.
WOLLMAN 2-23C4
 SECTION 23, TOWNSHIP 3 SOUTH, RANGE 4 WEST
 UTAH SPECIAL BASE & MERIDIAN

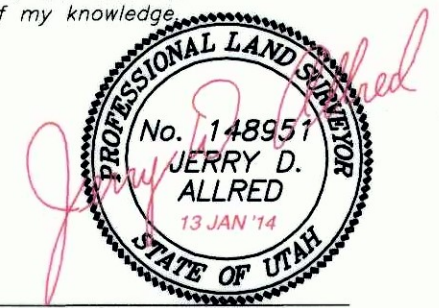


THIS SURVEY WAS PERFORMED USING GLOBAL POSITIONING SYSTEM PROCEDURES AND EQUIPMENT

THE BASIS OF BEARINGS IS GEODETIC NORTH DERIVED FROM G.P.S. OBSERVATIONS AT THE SECTION CORNER LOCATED AT LAT. 40°15'22.90258"N AND LONG. 110°23'21.19760"W USING THE UTAH STATE G.P.S. VIRTUAL REFERENCE STATION CONTROL NETWORK MAINTAINED AND OPERATED BY THE AUTOMATED GEOGRAPHIC REFERENCE CENTER

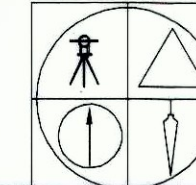
SURVEYOR'S CERTIFICATE

This is to certify that this plat was prepared from the field notes and electronic data collector files of an actual survey made by me, or under my personal supervision, of the pipeline shown hereon, and that this plat accurately represents said survey to the best of my knowledge.



Jerry D. Allred, Professional Land Surveyor,
 Certificate 148951 (Utah)

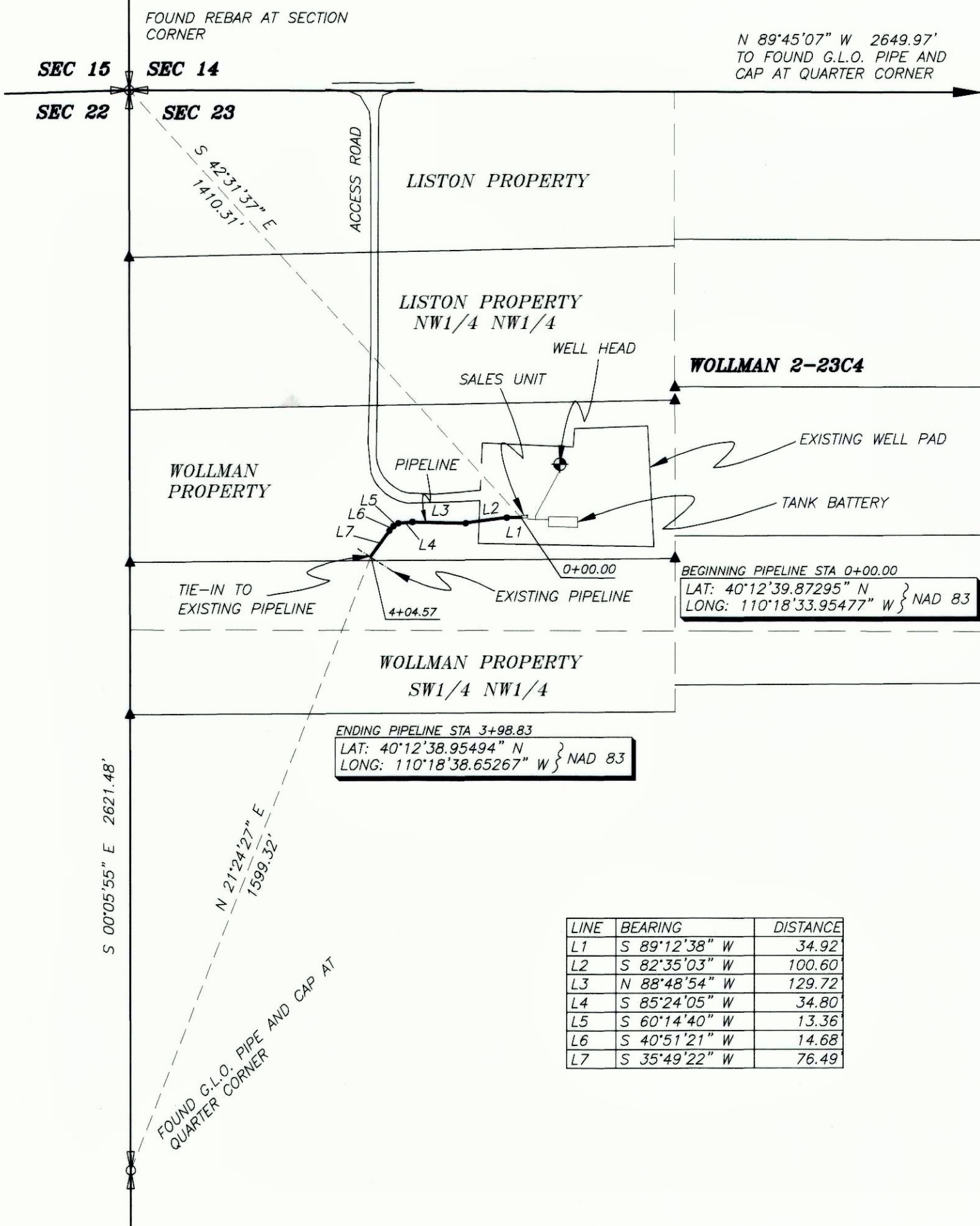
COUNTY SURVEYORS FILE NUMBER.



JERRY D. ALLRED AND ASSOCIATES
 SURVEYING CONSULTANTS

1235 NORTH 700 EAST--P.O. BOX 975
 DUCHESNE, UTAH 84021
 (435) 738-5352

LINE	BEARING	DISTANCE
L1	S 89°12'38" W	34.92
L2	S 82°35'03" W	100.60
L3	N 88°48'54" W	129.72
L4	S 85°24'05" W	34.80
L5	S 60°14'40" W	13.36
L6	S 40°51'21" W	14.68
L7	S 35°49'22" W	76.49



N 89°45'07" W 2649.97'
 TO FOUND G.L.O. PIPE AND
 CAP AT QUARTER CORNER

WOLLMAN 2-23C4

BEGINNING PIPELINE STA 0+00.00
 LAT: 40°12'39.87295" N } NAD 83
 LONG: 110°18'33.95477" W }

ENDING PIPELINE STA 3+98.83
 LAT: 40°12'38.95494" N } NAD 83
 LONG: 110°18'38.65267" W }