

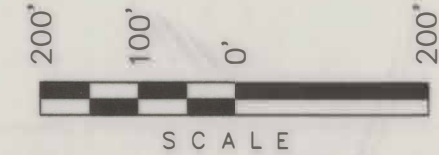
Moon Land and Livestock LTD
SE 1/4 SE 1/4
Sec. 14

Moon Land and Livestock LTD
SW 1/4 SW 1/4
Sec. 13

NEWFIELD EXPLORATION COMPANY

PROPOSED ROAD RIGHT-OF-WAY & SURFACE USE AREA ON FEE LANDS (For the 4-24-3-4 Pad)

Located in Sections 13, 14 & 24 T3S, R4W, U.S.B.&M. Duchesne County, Utah



CORNER TIE NOTE:
Beginning Sta. 0+00 bears N85°00'26"W 566.99' from the Southeast Corner of Section 14.

BEGINNING OF PROPOSED ROAD RIGHT-OF-WAY STA. 0+00 (At Existing Road)

ROAD RIGHT-OF-WAY DESCRIPTION

A 30' WIDE RIGHT-OF-WAY LOCATED IN SECTIONS 14, 13 & 24 T3S, R4W, U.S.B.&M. THE WIDTH OF SAID RIGHT-OF-WAY BEING 15' ON EACH SIDE OF THE CENTERLINE. THE CENTERLINE OF SAID RIGHT-OF-WAY BEING MORE PARTICULARLY DESCRIBED AS FOLLOWS:

BEGINNING AT A POINT IN THE SE 1/4 SE 1/4 OF SECTION 14, T3S, R4W, U.S.B.&M. WHICH BEARS N85°00'26"W 566.99' FROM THE SOUTHEAST CORNER OF SAID SECTION 14, THENCE N89°20'38"E 564.26' TO A POINT ON THE WEST LINE OF THE SW 1/4 OF SECTION 13, T3S, R4W, U.S.B.&M. WHICH BEARS N00°37'34"W 55.81' FROM THE SOUTHWEST CORNER OF SAID SECTION 13, THENCE N89°20'38"E 588.58'; THENCE S65°31'00"E 116.49' TO A POINT ON THE NORTH LINE OF THE NW 1/4 OF SECTION 24, T3S, R4W, U.S.B.&M. WHICH BEARS N88°49'20"E 694.10' FROM THE NORTHWEST CORNER OF SAID SECTION 24, THENCE S65°31'00"E 122.81' TO A POINT IN THE NW 1/4 NW 1/4 OF SAID SECTION 24 WHICH BEARS S87°23'49"E 806.55' FROM THE SAID NORTHWEST CORNER OF SECTION 24. THE SIDE LINES OF SAID DESCRIBED RIGHT-OF-WAY BEING SHORTENED OR ELONGATED TO MEET THE GRANTOR'S PROPERTY LINES. BASIS OF BEARINGS IS THE NORTH LINE OF THE NW 1/4 OF SAID SECTION 24 WHICH IS TAKEN FROM GLOBAL POSITIONING SATELLITE OBSERVATIONS TO BEAR S88°49'20"W A MEASURED DISTANCE OF 2660.49'. CONTAINS 0.959 ACRES MORE OR LESS.

1/16 Section Line/Property Line

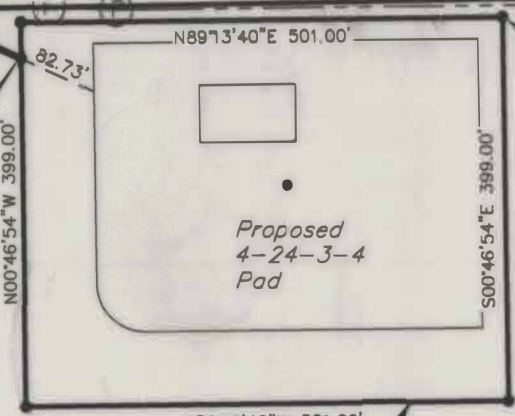


1/4 Corner 14/24 (1914 Brass Cap)

(Basis of Bearings) S88°49'20"W - 2660.49' (Meas.)

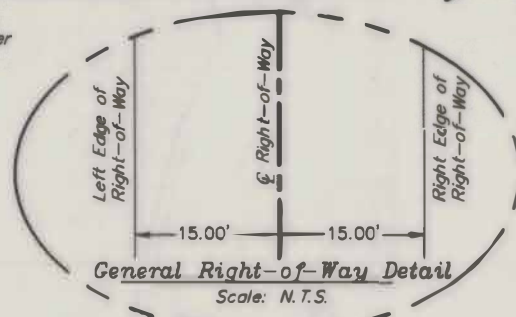
Centerline of Proposed Road Right-of-Way

END OF PROPOSED ROAD RIGHT-OF-WAY STA. 13+92.14 (At Surface Use Area)



SURFACE USE AREA 4-24-3-4 PAD (Contains 4.589 Acres)

CORNER TIE NOTE:
The Northeast corner (Point of Beginning) of the Surface Use Area bears N89°39'31"E 1306.19' from the Northwest Corner of Section 24.



LEGEND

- ◆ = SECTION CORNERS FOUND
- ⊙ = FIBER OPTIC CABLE MARKER
- P.I. = POINT OF INTERSECTION
- P.O.S.L. = POINT ON SECTION LINE
- = FIBER OPTIC CABLE
- - - - - = PROPERTY LINE

CORNER TIE NOTE:
End Sta. 13+92.14 bears S87°23'49"E 806.55' from the Northwest Corner of Section 24.

Retzke Trust NW 1/4 NW 1/4 Sec. 24

SURFACE USE AREA DESCRIPTION

BEGINNING AT A POINT IN THE NW 1/4 NW 1/4 OF SECTION 24, T3S, R4W, U.S.B.&M. WHICH BEARS N89°39'31"E 1306.19' FROM THE NORTHWEST CORNER OF SAID SECTION 24, THENCE S00°46'54"E 399.00'; THENCE S89°13'40"W 501.00'; THENCE N00°46'54"W 399.00'; THENCE N89°13'40"E 501.00' TO THE POINT OF BEGINNING. BASIS OF BEARINGS IS THE NORTH LINE OF THE NW 1/4 OF SAID SECTION 24 WHICH IS TAKEN FROM GLOBAL POSITIONING SATELLITE OBSERVATIONS TO BEAR S88°49'20"W A MEASURED DISTANCE OF 2660.49'. CONTAINS 4.589 ACRES MORE OR LESS.

CERTIFICATE

THIS IS TO CERTIFY THAT THE ABOVE PLAT WAS PREPARED FROM FIELD NOTES OF ACTUAL SURVEYS MADE BY ME OR UNDER MY SUPERVISION AND THAT THE SAME ARE TRUE AND CORRECT TO THE BEST OF MY KNOWLEDGE AND BELIEF.

PROF. No. 348473
PAUL A. HAWKES
REGISTERED LAND SURVEYOR
REGISTRATION No. 348473
STATE OF UTAH

REVISED: 06-14-13 L.K. RE-ROUTED THE ROAD
REVISED: 05-08-13 L.K. CHANGED ROAD ASSOCIATION

RIGHT-OF-WAY LENGTHS	
MOON LAND LIVESTOCK, SECTION 14	= 564.26'
MOON LAND LIVESTOCK, SECTION 13	= 705.07'
RETZKE TRUST, SECTION 24	= 122.81'
TOTAL	= 1,392.14'

SURVEYED BY:	Q.M.
DRAWN BY:	L.K.
DATE:	10-15-12
SCALE:	1" = 200'
DWG #:	12-0600

Tri State Land Surveying, Inc.
(435) 781-2501
180 NORTH VERNAL AVE. - VERNAL, UTAH 84078

County Surveyor File # 28220

FILE: \\LEWIS\drawings\NEWFIELD 2013\8500 SOUTH ROAD RE-ALIGNMENT.dwg \ROAD.dwg