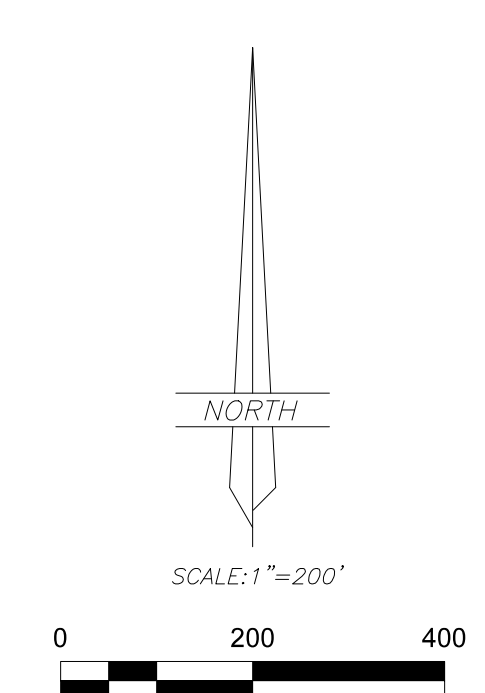
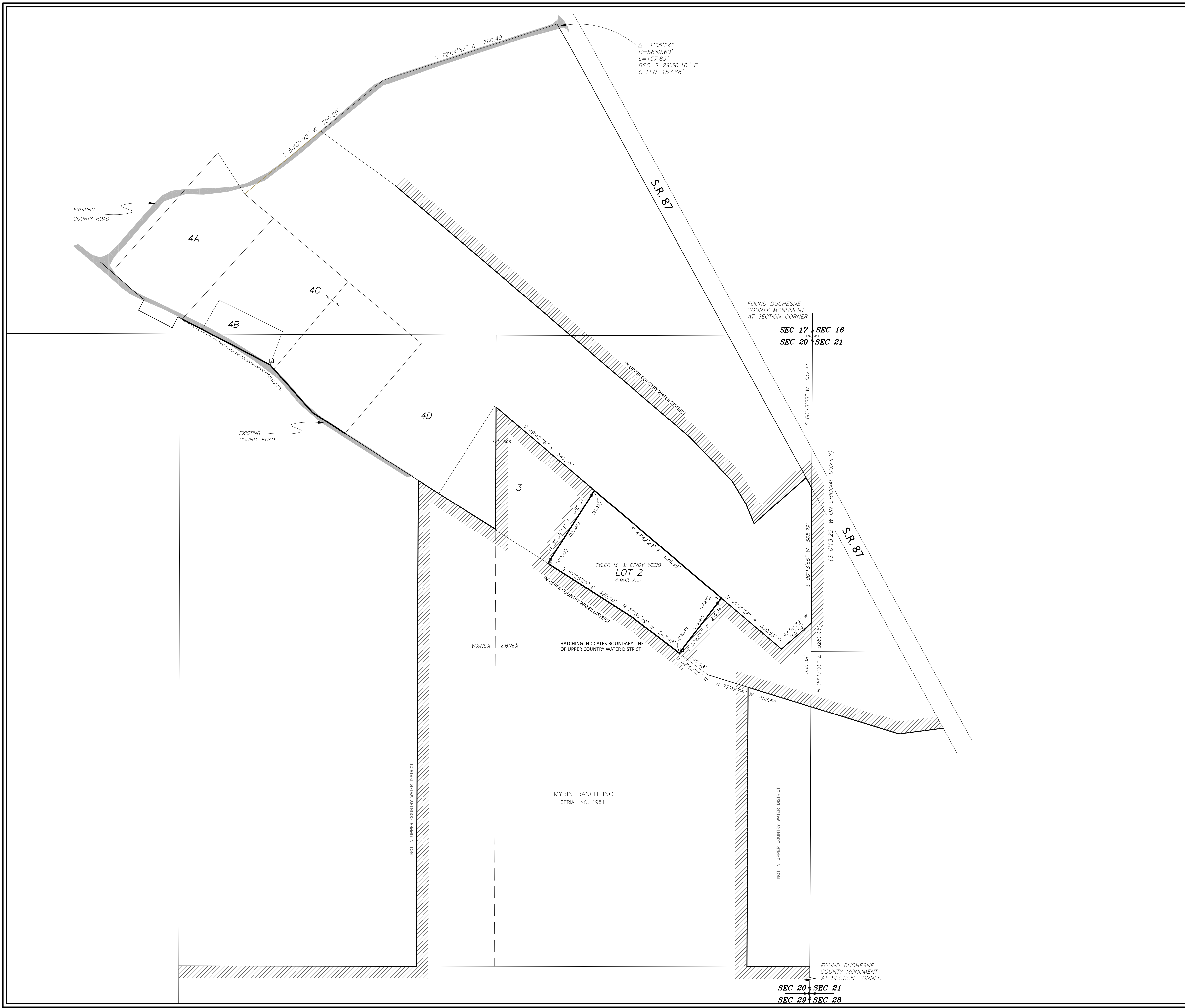


RECORD OF SURVEY FOR TYLER AND CINDY WEBB

SECTION 20, TOWNSHIP 2 SOUTH, RANGE 3 WEST
UINTAH SPECIAL BASE AND MERIDIAN
DUCHESE COUNTY, UTAH



- LEGEND**
- FOUND OR SET SECTION CORNER AS NOTED ON PLAT
 - FOUND OR SET QUARTER CORNER AS NOTED ON PLAT
 - FOUND OR SET 1/16 CORNER AS NOTED ON PLAT
 - FOUND MONUMENT SET BY OTHERS
 - SET 5/8"x24" REBAR WITH PLASTIC CAP STAMPED "ALLRED SURVEY"
 - 8" SPIKES WITH "WHISKERS" SET ON LINE
 - FENCE CORNER
 - EXISTING FENCE
 - MAG SPIKE AND WASHER

BASIS OF BEARINGS

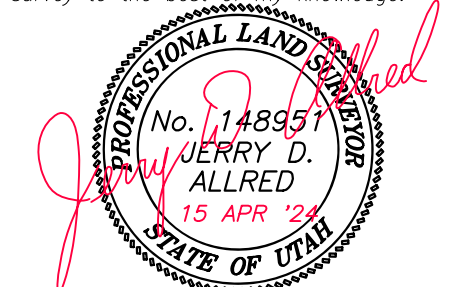
THIS SURVEY WAS PERFORMED USING GLOBAL POSITIONING SYSTEM PROCEDURES AND EQUIPMENT. THE BASIS OF BEARINGS IS GEODETIC NORTH DERIVED FROM C.P.S. OBSERVATIONS AT A CONTROL POINT LOCATED AT LAT. 40°12'48.98172"N AND LONG. 110°13'09.02328"W USING THE UTAH STATE C.P.S. VIRTUAL REFERENCE STATION CONTROL NETWORK MAINTAINED AND OPERATED BY THE UTAH GEOSPATIAL RESOURCE CENTER.

NARRATIVE

This survey was performed at the request of Cindy Webb for the purpose of marking the corners and lines of LOT 2, LONE PINE RANCH ESTATES Subdivision as shown on this plat. Data from the original subdivision plat was plotted and rotated to fit the basis of bearings of this survey. A search was then made to find the monuments marking the Public Land Survey System corners, with results noted by the crosses shown on the plat. The plat of the subdivision was then indexed to the found monuments and used to control the survey.

SURVEYOR'S CERTIFICATE

I, Jerry D. Allred, do hereby certify that I am a Professional Land Surveyor, and that I hold certificate no. 148951 as prescribed by the laws of the State of Utah; I further certify that this plat and its computations were prepared from the field notes and electronic data collector files of an actual survey made by me, or under my personal supervision, of the parcels of land shown hereon, and from data obtained from the Duchesne County Surveyor's office, the County G.I.S. department, the County Recorder's records and information returned on the original General Land Office plats of the area and that the monuments indicated were found or set during said survey, and that this plat accurately represents said survey to the best of my knowledge.



Jerry D. Allred, Professional Land Surveyor,
Certificate No. 148951, (Utah)

COUNTY SURVEYOR FILE NO. 5682

JERRY D. ALLRED & ASSOCIATES, INC.
SURVEYING CONSULTANTS

1235 NORTH 700 EAST—P.O. BOX 975
DUCHESE, UTAH 84021
(435) 738-5352