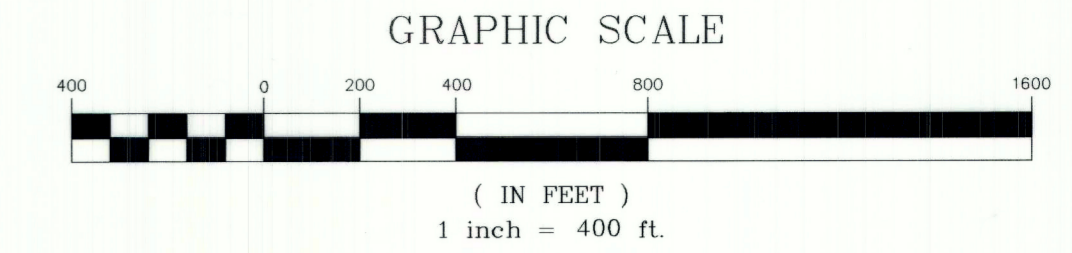


Big Sandwash Reservoir Record of Survey

Located in Section 15, T. 2 S., R. 3 W., U.S.B. & M.
Duchesne County, Utah
2021

LEGEND

- SURVEYED BOUNDARY LINE
- - - SECTION LINE
- - - QUARTER SECTION LINE
- - - DEED LINE
- SET REBAR WITH PLASTIC CAP STAMPED JONES & DEMILLE ENG. UNLESS OTHERWISE NOTED
- SET 8" SPIKE NAIL WITH A WHISKER AS A POINT ON LINE
- △ FOUND SURVEY MONUMENT SET BY HORROCKS SURVEY UNLESS OTHERWISE NOTED
- ✦ FOUND SECTION CORNER AS NOTED
- ✧ NOT FOUND SECTION CORNER AS NOTED
- ✧ FOUND QUARTER SECTION CORNER AS NOTED
- ✧ NOT FOUND QUARTER SECTION CORNER AS NOTED



SURVEY NARRATIVE AND NOTES

1. THE PURPOSE OF THIS SURVEY WAS TO STAKE THE MISSING CORNERS ALONG THE BIG SANDWASH RESERVOIR ACROSS SECTION 15, T. 2 S., R. 3 W., U.S.B. & M. AND TO SET POINTS ON LINE ALONG THAT BOUNDARY LINE. THIS WAS DONE BY RETRACING THE SURVEY PERFORMED BY HORROCKS ENGINEERS FOR CENTRAL UTAH WATER CONSERVANCY DISTRICT AND THE ENLARGEMENT SURVEY FOR BIG SANDWASH RESERVOIR AND COMPARING THE DEEDS FOR THE ADJOINING PARCELS.
2. BASIS OF BEARING IS S89°16'23"E BETWEEN THE NORTHEAST CORNER AND THE NORTHWEST CORNER OF SECTION 15, T. 2 S., R. 3 W., U.S.B. & M.
3. THE LOCATION FOR THE SOUTH QUARTER CORNER, THE SOUTHEAST CORNER, AND THE EAST QUARTER CORNER OF SECTION 15, T. 2 S., R. 3 W., SHOWN HEREON AS NOT FOUND, WERE RE-ESTABLISHED USING THE SURVEY PERFORMED BY HORROCKS ENGINEERING IN 2014 FOR THE ENLARGEMENT OF BIG SANDWASH RESERVOIR. SAID SURVEY PLAT CAN BE FOUND AT THE OFFICE OF THE DUCHESNE COUNTY SURVEYOR AS FILE NUMBER 3002.
4. THE LOCATION FOR THE SOUTHWEST CORNER OF SECTION 15, T. 2 S., R. 3 W., SHOWN HEREON AS NOT FOUND, WAS RE-ESTABLISHED USING THE SURVEY PERFORMED BY HORROCKS ENGINEERING IN 2014 FOR THE ENLARGEMENT OF BIG SANDWASH RESERVOIR. SAID SURVEY PLAT CAN BE FOUND AT THE OFFICE OF THE DUCHESNE COUNTY SURVEYOR AS FILE NUMBER 3002. FROM MY RESEARCH THIS CORNER WAS RESET DURING A SURVEY PERFORMED BY JERRY ALLRED IN 2017 (COUNTY SURVEYOR FILE 3637). CORNER THAT WAS SET APPEARS TO BE IN THE SAME POSITION WITHIN REASON AS THE CALCULATED POSITION FROM THE HORROCKS SURVEY.
5. THE FOUND REBAR AND CAP FOR THE WEST QUARTER CORNER OF SECTION 15, T. 2 S., R. 3 W., DOES NOT MATCH THE SURVEY PERFORMED BY HORROCKS ENGINEERING IN 2014 FOR THE ENLARGEMENT OF BIG SANDWASH RESERVOIR. SAID SURVEY PLAT CAN BE FOUND AT THE OFFICE OF THE DUCHESNE COUNTY SURVEYOR AS FILE NUMBER 3002. FROM MY RESEARCH THIS CORNER WAS USED IN THE BLUEBELL ESTATES SUBDIVISION, THE SANDWASH ESTATES SUBDIVISION PHASE 1 AND 2, AS WELL AS USED TO RESET THE SOUTHWEST CORNER OF SECTION 15 WHICH WAS SET DURING A SURVEY PERFORMED BY JERRY ALLRED IN 2017 (COUNTY SURVEYOR FILE 3637). USING THE FOUND REBAR AND CAP CHANGES WHERE THE SECTION LINE CROSSES OVER THE BOUNDARY OF THE RESERVOIR. THE DISTANCES NOTED HEREON WHERE THE BOUNDARY INTERSECTS WITH THE SECTION LINE, WILL DIFFER FROM THE HORROCKS SURVEY.
6. THE SURVEY PERFORMED BY HORROCKS ENGINEERING IN 2014 FOR THE ENLARGEMENT OF BIG SANDWASH RESERVOIR DOES NOT MATCH WHAT IS RECORDED FOR THE ADJOINING PARCEL DESCRIPTION. ENTRY NUMBER 509610 ON FILE AT THE DUCHESNE COUNTY RECORDERS OFFICE, DESCRIBES A STRAIGHT LINE ACROSS THIS AREA. THIS IS ALSO SHOWN ON THE SURVEY PLAT ON FILE AT THE OFFICE OF THE RECORDER IN DUCHESNE COUNTY AS ENTRY NUMBER 387166, BOOK A-474 PAGE 374. THIS SURVEY SHOWS THE STRAIGHT LINE AS WELL, WHICH WILL DIFFER FROM THE HORROCKS SURVEY.
7. THE SURVEY PERFORMED BY HORROCKS ENGINEERING IN 2014 FOR THE ENLARGEMENT OF BIG SANDWASH RESERVOIR DOES NOT MATCH WHAT IS RECORDED FOR THE ADJOINING PARCEL DESCRIPTION. ENTRY NUMBER 509658 ON FILE AT THE DUCHESNE COUNTY RECORDERS OFFICE, DESCRIBES A STRAIGHT LINE ACROSS THIS AREA THAT IS ALONG THE SECTION LINE. THIS IS ALSO SHOWN ON THE SURVEY PLAT ON FILE AT THE DUCHESNE COUNTY SURVEYOR'S OFFICE AS FILE NUMBER 3637. THIS SURVEY ALSO SHOWS THE SECTION LINE AS THE BOUNDARY LINE, WHICH WILL DIFFER FROM THE HORROCKS SURVEY.

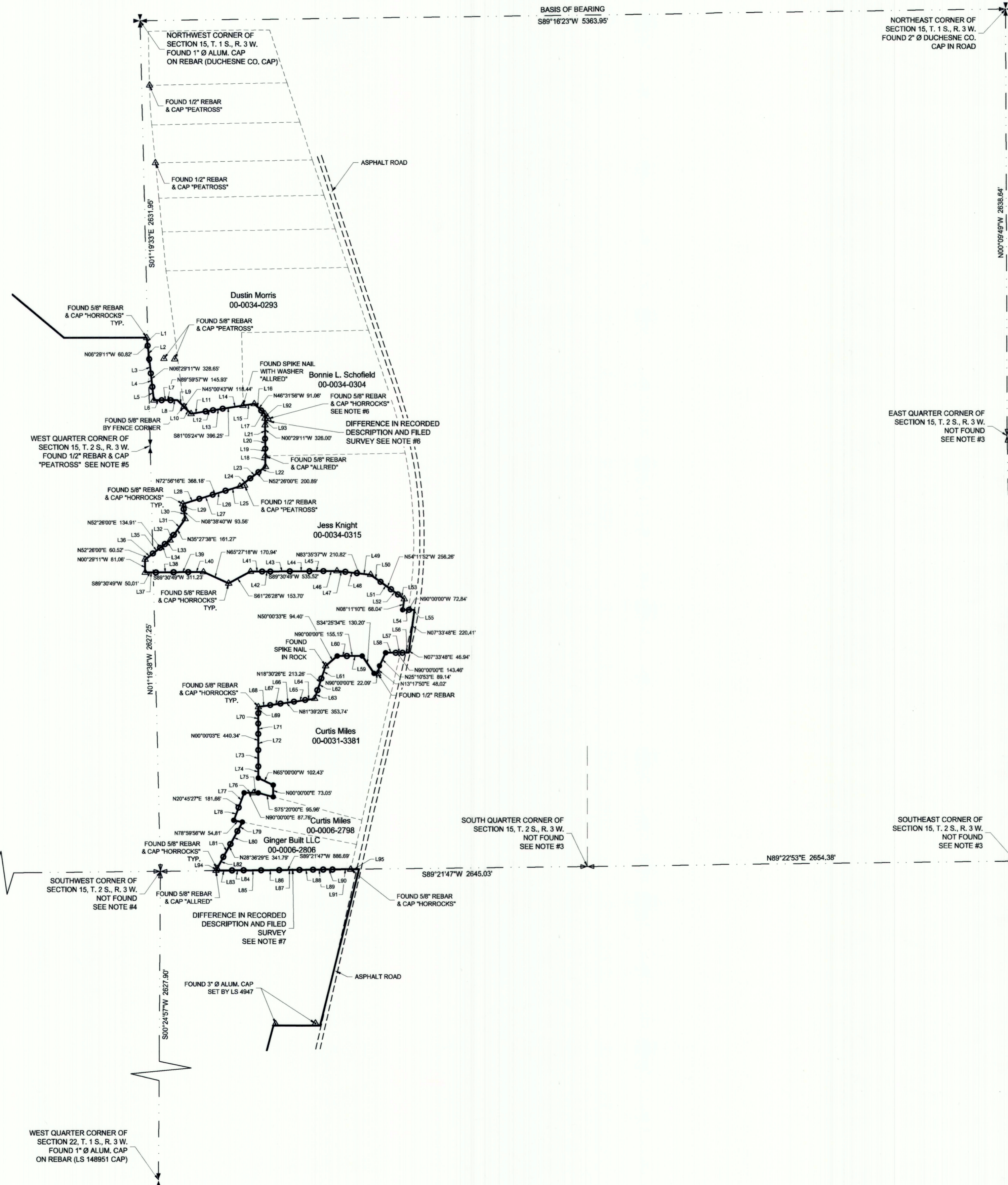
SURVEYOR'S CERTIFICATE

I, TROY W. GADD, A REGISTERED LAND SURVEYOR AS PRESCRIBED BY THE LAWS OF THE STATE OF UTAH, HOLDING CERTIFICATE #5561169, CERTIFY THAT THE SURVEY SHOWN HEREON WAS MADE UNDER MY DIRECTION.

I FURTHER CERTIFY THAT THIS PLAT CORRECTLY SHOWS THE DIMENSIONS OF THE PROPERTY SURVEYED.



Troy W. Gadd 2/17/21
TROY W. GADD, L.S. #5561169 DATE



DEED DESCRIPTION FOR ADJOINING PARCELS

- DUSTIN MORRIS
PARCEL 00-0034-0293 (BES-0007)
TAKEN FROM A WARRANTY DEED ON RECORD AT THE DUCHESNE COUNTY RECORDERS OFFICE AS ENTRY NUMBER 418099, BOOK A-571, PAGE 265.
- BONNIE L. SCHOFIELD
PARCEL 00-0034-0304 (BES-0008)
TAKEN FROM A WARRANTY DEED ON RECORD AT THE DUCHESNE COUNTY RECORDERS OFFICE AS ENTRY NUMBER 509610.
- JESS KNIGHT
PARCEL 00-0034-0315 (BES-0009)
TAKEN FROM A WARRANTY DEED ON RECORD AT THE DUCHESNE COUNTY RECORDERS OFFICE AS ENTRY NUMBER 401218, BOOK A-525, PAGE 207.
- CURTIS MILES
PARCEL 00-0031-3391 (1930-0003)
TAKEN FROM A WARRANTY DEED ON RECORD AT THE DUCHESNE COUNTY RECORDERS OFFICE AS ENTRY NUMBER 538843.
- CURTIS MILES
PARCEL 00-0006-2798 (1930-0001)
TAKEN FROM A WARRANTY DEED ON RECORD AT THE DUCHESNE COUNTY RECORDERS OFFICE AS ENTRY NUMBER 487522.
- GINGER BUILT, LLC
PARCEL 00-0006-2806 (1930-0002)
TAKEN FROM A WARRANTY DEED ON RECORD AT THE DUCHESNE COUNTY RECORDERS OFFICE AS ENTRY NUMBER 509958.

Table for the Spike Nails set as Points on Line

Line #	Length	Direction	Line #	Length	Direction	Line #	Length	Direction
L1	50.22	S06°29'07"E	L21	84.18	S00°29'11"E	L41	72.13	N89°30'49"W
L2	83.37	N06°29'11"W	L22	54.63	S52°26'00"W	L42	51.29	S89°30'49"W
L3	89.11	N06°29'11"W	L23	63.85	N52°26'00"E	L43	120.89	S89°30'49"W
L4	83.59	N06°29'10"W	L24	82.41	N52°26'00"E	L44	122.16	S89°30'49"W
L5	83.19	S06°29'12"E	L25	91.25	S72°56'16"W	L45	86.02	S89°30'49"W
L6	48.68	N89°59'06"E	L26	82.59	N72°56'16"E	L46	83.02	S89°30'49"W
L7	54.80	S89°59'06"E	L27	86.34	N72°56'16"E	L47	52.75	S83°35'37"E
L8	42.45	N89°59'57"W	L28	108.00	N72°56'16"E	L48	72.66	S83°35'37"E
L9	56.86	S45°00'17"E	L29	31.95	S08°38'40"E	L49	85.41	S83°35'37"E
L10	61.58	N45°01'07"W	L30	61.61	N08°39'08"W	L50	75.44	S54°11'52"E
L11	91.58	N81°05'24"E	L31	121.04	S35°27'38"W	L51	79.40	N54°11'52"W
L12	47.16	S81°05'24"W	L32	40.23	N35°27'38"E	L52	53.51	N54°11'52"W
L13	60.60	S81°05'24"W	L33	39.67	S52°26'00"W	L53	47.92	N54°11'52"W
L14	126.66	S81°05'24"W	L34	38.10	N52°26'00"E	L54	39.81	N90°00'00"E
L15	70.24	S81°05'24"W	L36	61.19	N52°26'00"E	L55	33.03	N90°00'00"W
L16	60.12	S46°25'02"E	L35	56.47	N52°26'00"E	L56	38.81	N90°00'00"W
L17	30.94	N46°31'56"W	L37	66.91	N89°30'49"E	L57	41.60	N90°00'00"W
L18	67.49	N00°29'11"W	L38	108.97	S89°30'49"W	L58	63.04	N90°00'00"E
L19	44.45	N00°29'11"W	L39	90.73	S89°30'49"W	L59	95.26	N90°00'00"W
L20	61.89	N00°29'11"W	L40	94.63	S89°30'49"W	L60	59.89	N90°00'00"E

Table Continued

Line #	Length	Direction	Line #	Length	Direction
L61	81.40	S18°30'26"W	L81	90.48	S28°36'29"W
L63	54.99	N18°30'26"E	L82	82.89	S28°36'29"W
L62	76.87	S18°30'26"W	L83	99.31	N89°21'47"E
L64	58.48	S81°39'20"W	L84	71.24	N89°21'47"E
L65	70.95	S81°39'20"W	L85	109.15	N89°21'47"E
L66	84.94	S81°39'20"W	L86	111.61	N89°21'47"E
L67	63.57	S81°39'20"W	L87	126.16	N89°21'47"E
L68	75.79	N81°39'20"E	L88	83.87	N89°21'47"E
L69	38.80	S00°00'03"W	L89	62.62	N89°21'47"E
L70	64.95	S00°00'03"W	L90	57.98	N89°21'47"E
L71	63.13	S00°00'03"W	L91	112.39	S89°21'47"W
L72	99.95	S00°00'03"W	L92	27.45	S00°29'11"E
L73	101.12	S00°00'03"W	L93	40.54	S00°29'11"E
L74	72.39	N00°00'03"E	L94	13.28	N28°36'29"E
L75	30.06	N89°59'56"E	L95	52.36	N89°21'47"E
L76	57.70	S89°59'58"E			
L77	96.85	S20°45'27"W			
L78	84.81	N20°45'27"E			
L79	64.63	S28°36'29"W			
L80	90.52	S28°36'29"W			

PREPARED BY:
Jones & DeMille Engineering, Inc.
CIVIL ENGINEERING - SURVEYING - TESTING - GIS - ENVIRONMENTAL
- infrastructure professionals -
1.800.748.5275 www.jonesanddemille.com

PROJECT NUMBER: 2011-035 FILE NAME: h:\proj\2011-035\dwg\2011-035 sec15 survey.dwg
SURVEYED BY: T.W.G. DRAWN BY: T.W.G. UPDATED: 2/17/2021 PLOTTED: 2/17/2021

Big Sandwash Reservoir Record of Survey

Duchesne County, Utah
Scale: 1" = 400'

County Surveyor's File # 4833

4833

4833