

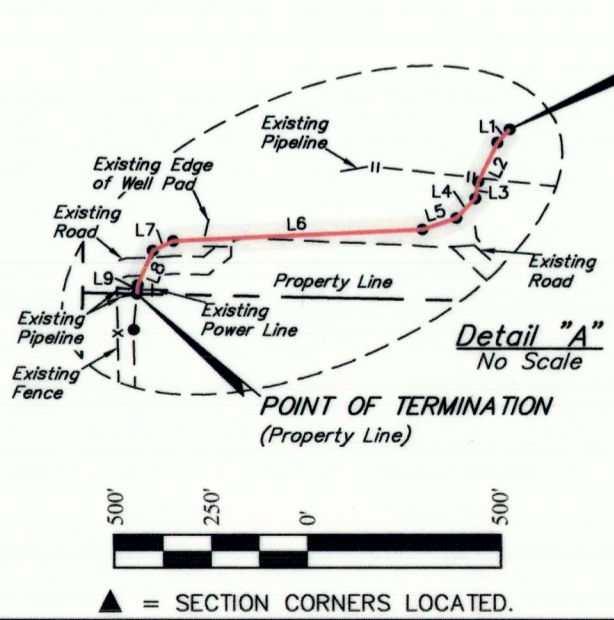
LINE TABLE

LINE	DIRECTION	LENGTH
L1	S43°12'53\"W	19.37'
L2	S25°51'38\"W	46.48'
L3	S09°27'49\"W	18.11'
L4	S43°24'56\"W	28.84'
L5	S71°32'20\"W	37.99'
L6	S87°18'59\"W	265.77'
L7	S65°04'12\"W	23.87'
L8	S23°38'32\"W	39.07'
L9	S04°51'52\"W	9.52'

AS-BUILT PIPELINE RIGHT-OF-WAY DESCRIPTION

A 30' WIDE RIGHT-OF-WAY 15' ON EACH SIDE OF THE FOLLOWING DESCRIBED CENTERLINE.

COMMENCING AT THE NORTH 1/4 CORNER OF SECTION 9, T2S, R3W, U.S.B.&M., THENCE S89°28'39\"E 1320.77' ALONG THE NORTH LINE OF THE NW 1/4 NE 1/4 OF SAID SECTION 9 TO THE EAST 1/16 CORNER OF SAID SECTION 9 AND SECTION 4, T2S, R3W, U.S.B.&M.; THENCE S38°58'39\"E 714.37' TO A POINT IN THE NE 1/4 NE 1/4 OF SAID SECTION 9 AND THE POINT OF BEGINNING; THENCE S43°12'53\"W 19.37'; THENCE S25°51'38\"W 46.48'; THENCE S09°27'49\"W 18.11'; THENCE S43°24'56\"W 28.84'; THENCE S71°32'20\"W 37.99'; THENCE S87°18'59\"W 265.77'; THENCE S65°04'12\"W 23.87'; THENCE S23°38'32\"W 39.07'; THENCE S04°51'52\"W 9.52' TO A POINT IN THE NE 1/4 NE 1/4 OF SAID SECTION 9 AND THE POINT OF TERMINATION, WHICH BEARS S04°10'58\"E 731.85' FROM THE EAST 1/16 CORNER OF SAID SECTION 9 AND SECTION 4. THE SIDE LINES OF SAID DESCRIBED RIGHT-OF-WAY BEING SHORTENED OR ELONGATED TO MEET THE GRANTOR'S PROPERTY LINES. CONTAINS 0.337 ACRES MORE OR LESS.



ACREAGE / LENGTH TABLE

FEET	RODS	ACRES
489.02	29.64	0.337

CERTIFICATE

THIS IS TO CERTIFY THAT THE ABOVE PLAT WAS PREPARED FROM FIELD NOTES OF ACTUAL SURVEYS MADE BY ME OR UNDER MY SUPERVISION AND THAT THE SAME ARE TRUE AND CORRECT TO THE BEST OF MY KNOWLEDGE AND BELIEF.



XCL ASSETCO., LLC

**MAIN TRUNK LINE
AS-BUILT PIPELINE RIGHT-OF-WAY ON
XCL ASSETCO., LLC LANDS IN
SECTION 9, T2S, R3W, U.S.B.&M.
DUCESNE COUNTY, UTAH**

SURVEYED BY	C.R.	11-05-20	SCALE
DRAWN BY	S.O.	11-12-20	1" = 500'
FILE:	X-1392-A		

AS-BUILT PIPELINE RIGHT-OF-WAY

UELS, LLC
Corporate Office * 85 South 200 East
Vernal, UT 84078 * (435) 789-1017

County Surveyor's File # 41764