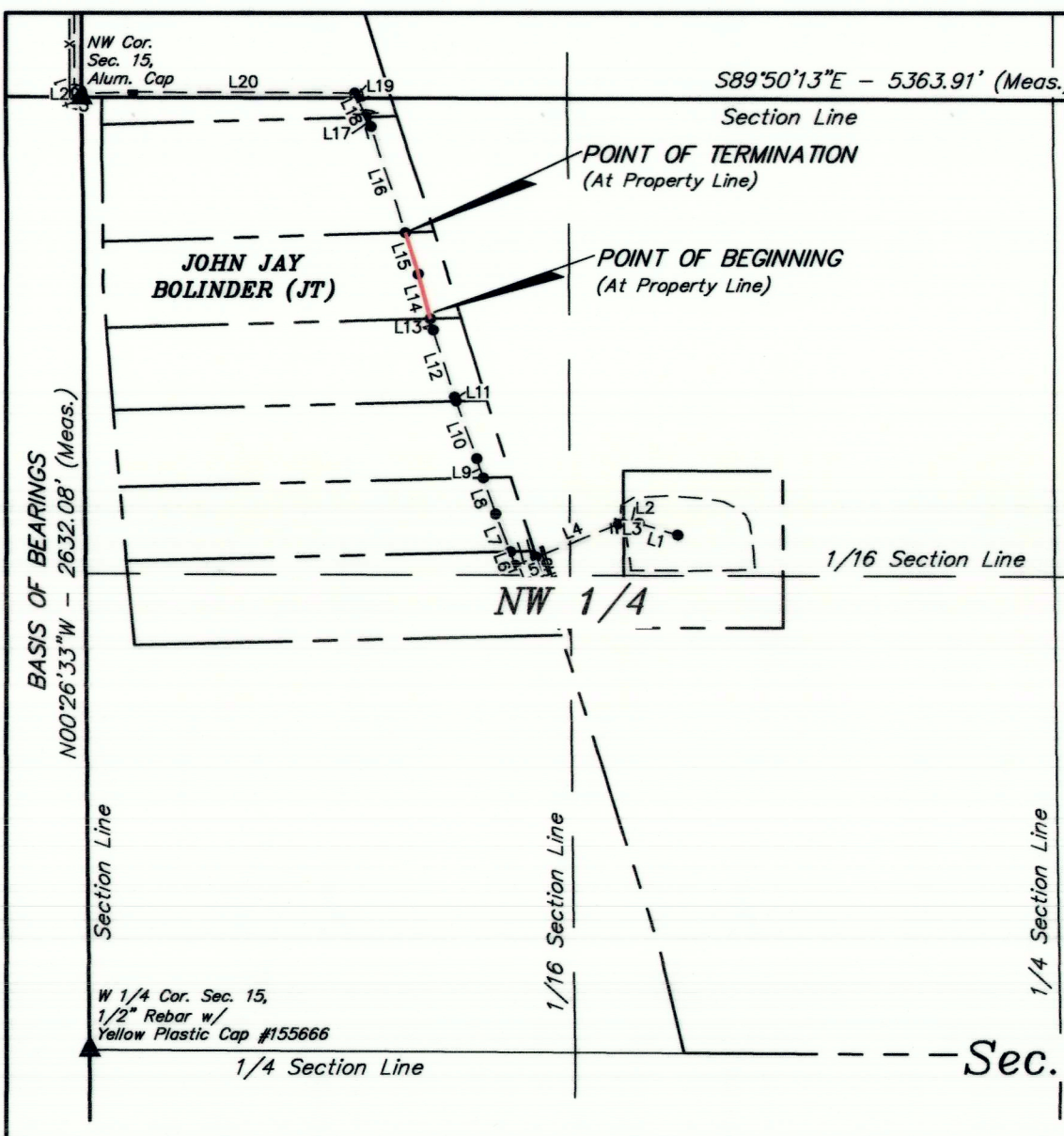
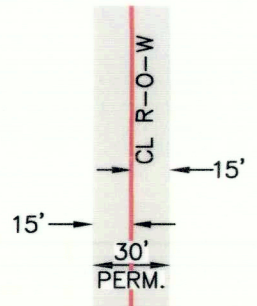


EXHIBIT "A"



NE Cor. Sec. 15, 2001 Alum. Cap



TYPICAL RIGHT-OF-WAY DETAIL NO SCALE

LINE TABLE		
LINE	DIRECTION	LENGTH
L14	N15°13'50"W	127.46'
L15	N17°25'40"W	120.51'

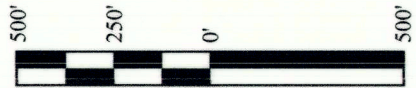
AS-BUILT PIPELINE RIGHT-OF-WAY DESCRIPTION

A 30' WIDE RIGHT-OF-WAY 15' ON EACH SIDE OF THE FOLLOWING DESCRIBED CENTERLINE.

COMMENCING AT THE WEST 1/4 CORNER OF SECTION 15, T2S, R3W, U.S.B.&M. THENCE N00°26'33"W 2632.08' ALONG THE WEST LINE OF THE NW 1/4 OF SAID SECTION 15 TO THE NORTHWEST CORNER OF SAID SECTION 15; THENCE S57°31'57"E 1138.84' TO A POINT IN THE NW 1/4 NW 1/4 OF SAID SECTION 15 AND THE POINT OF BEGINNING; THENCE N15°13'50"W 127.46'; THENCE N17°25'40"W 120.51' TO A POINT IN THE NW 1/4 NW 1/4 OF SAID SECTION 15 AND THE POINT OF TERMINATION, WHICH BEARS S67°16'09"E 966.31' FROM THE NORTHWEST CORNER OF SAID SECTION 15. THE SIDE LINES OF SAID DESCRIBED RIGHT-OF-WAY BEING SHORTENED OR ELONGATED TO MEET THE GRANTOR'S PROPERTY LINES. CONTAINS 0.171 ACRES MORE OR LESS.

POINT OF BEGINNING BEARS S57°31'57"E 1138.84' FROM THE NORTHWEST CORNER OF SECTION 15, T2S, R3W, U.S.B.&M.

POINT OF TERMINATION BEARS S67°16'09"E 966.31' FROM THE NORTHWEST CORNER OF SECTION 15, T2S, R3W, U.S.B.&M.



ACREAGE / LENGTH TABLE		
FEET	RODS	ACRES
247.97	15.03	0.171

▲ = SECTION CORNERS LOCATED.

CERTIFICATE

THIS IS TO CERTIFY THAT THE ABOVE PLAT WAS PREPARED FROM FIELD NOTES OF ACTUAL SURVEYS MADE BY ME OR UNDER MY SUPERVISION AND THAT THE SAME ARE TRUE AND CORRECT TO THE BEST OF MY KNOWLEDGE AND BELIEF.



XCL RESOURCES

BODRERO NORTH PIPELINE AS-BUILT PIPELINE RIGHT-OF-WAY ON JOHN JAY BOLINDER (JT) LANDS SECTION 15, T2S, R3W, U.S.B.&M. DUCHESNE COUNTY, UTAH

SURVEYED BY	C.R.	06-24-20	SCALE
DRAWN BY	A.T.	06-29-20	1" = 500'
FILE:	X-1395-G		

AS-BUILT PIPELINE RIGHT-OF-WAY



UELS, LLC  
Corporate Office \* 85 South 200 East  
Vernal, UT 84078 \* (435) 789-1017



County Surveyor's File # 4615