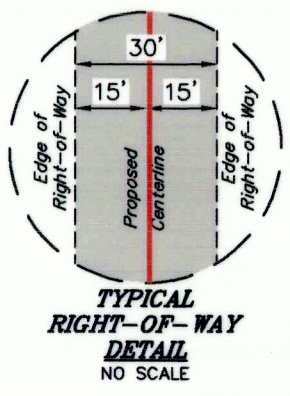
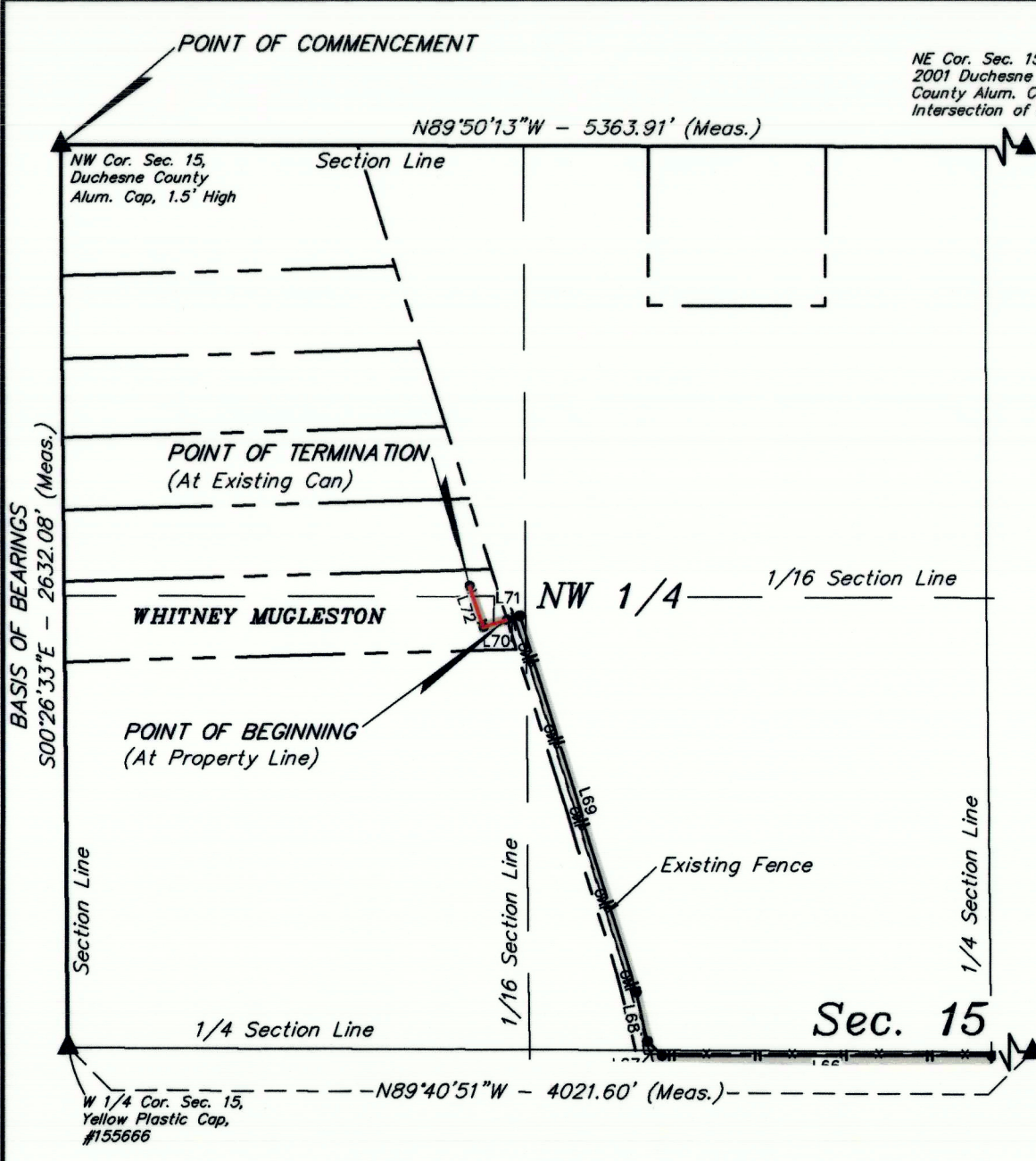


EXHIBIT "A"

NE Cor. Sec. 15,
2001 Duchesne
County Alum. Cap in
Intersection of Road



LINE TABLE		
LINE	DIRECTION	LENGTH
L71	S72°42'03"W	71.13'
L72	N18°49'22"W	126.66'

PIPELINE RIGHT-OF-WAY DESCRIPTION

A 30' WIDE RIGHT-OF-WAY 15' ON EACH SIDE OF THE FOLLOWING DESCRIBED CENTERLINE.

COMMENCING AT THE NORTHWEST CORNER OF SECTION 15, T2S, R3W, U.S.B.&M. THENCE ALONG THE WEST LINE OF THE NW 1/4 OF SAID SECTION 15, S00°26'33"E 2632.08' TO THE WEST 1/4 CORNER OF SAID SECTION 15; THENCE N45°39'00"E 1780.11' TO A POINT IN THE SW 1/4 NW 1/4 AND THE POINT OF BEGINNING; THENCE S72°42'03"W 71.13'; THENCE N18°49'22"W 126.66' TO A POINT IN THE NW 1/4 NW 1/4 OF SAID SECTION 15 AND THE POINT OF TERMINATION WHICH BEARS S42°34'58"E 1750.50' FROM THE NORTHWEST CORNER OF SAID SECTION 15. THE SIDE LINES OF SAID DESCRIBED RIGHT-OF-WAY BEING SHORTENED OR ELONGATED TO MEET THE GRANTOR'S PROPERTY LINES. CONTAINS 0.136 ACRES MORE OR LESS.

POINT OF BEGINNING BEARS
N45°39'00"E 1780.11' FROM THE WEST
1/4 CORNER OF SECTION 15, T2S,
R3W, U.S.B.&M.

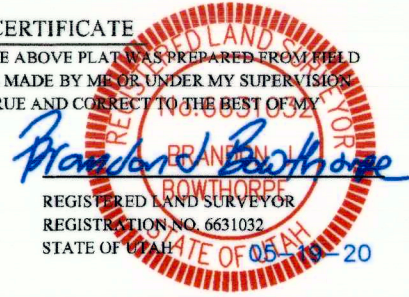
POINT OF TERMINATION BEARS
S42°34'58"E 1750.50' FROM THE
NORTHWEST CORNER OF SECTION 15,
T2S, R3W, U.S.B.&M.



LENGTH TABLE		
FEET	RODS	ACRES
197.79	11.99	0.136

▲ = SECTION CORNERS LOCATED.

CERTIFICATE
THIS IS TO CERTIFY THAT THE ABOVE PLAT WAS PREPARED FROM FIELD NOTES OF ACTUAL SURVEYS MADE BY ME OR UNDER MY SUPERVISION AND THAT THE SAME ARE TRUE AND CORRECT TO THE BEST OF MY KNOWLEDGE AND BELIEF.



REV: 1 05-19-20 D.J.S. (COMPANY & PIPELINE NAME CHANGE)

XCL AssetCo., LLC

**MAIN TRUNK SOUTH-NORTH 8" PW
PIPELINE RIGHT-OF-WAY ON
WHITNEY MUGLESTON LANDS
SECTION 15, T2S, R3W, U.S.B.&M.
DUCHESNE COUNTY, UTAH**

SURVEYED BY	C.R., J.F.	12-18-19	SCALE
DRAWN BY	C.D.L.	12-24-19	1" = 500'
FILE:	A-1579-K		

PIPELINE RIGHT-OF-WAY



UELS, LLC
Corporate Office * 85 South 200 East
Vernal, UT 84078 * (435) 789-1017



County Surveyor's File # 4546