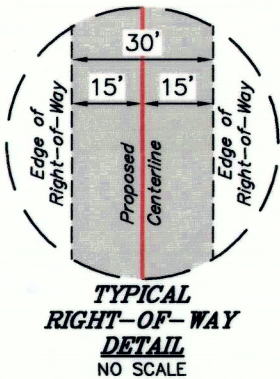


LINE TABLE		
LINE	DIRECTION	LENGTH
L1	N86°03'28"W	2699.01'

POINT OF BEGINNING BEARS
 N79°12'41"W 2537.09' FROM THE
 SOUTHEAST CORNER OF SECTION
 19, T2S, R2W, U.S.B. & M.

POINT OF TERMINATION BEARS
 N00°02'32"E 685.78' FROM THE
 SOUTHWEST CORNER OF SECTION
 19, T2S, R2W, U.S.B. & M.

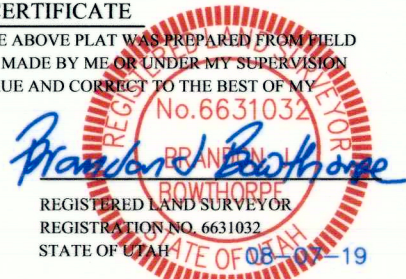


BASIS OF BEARINGS
 BASIS OF BEARINGS IS A G.P.S. OBSERVATION



ACREAGE / LENGTH TABLE			
PROPERTY OWNER	FEET	RODS	ACRES
MAX W. ANDERSON INVESTMENT CO.	2699.01	163.58	1.859

CERTIFICATE
 THIS IS TO CERTIFY THAT THE ABOVE PLAT WAS PREPARED FROM FIELD NOTES OF ACTUAL SURVEYS MADE BY ME OR UNDER MY SUPERVISION AND THAT THE SAME ARE TRUE AND CORRECT TO THE BEST OF MY KNOWLEDGE AND BELIEF.



SHEET 1 OF 2

▲ = SECTION CORNERS LOCATED.



UELS, LLC
 Corporate Office * 85 South 200 East
 Vernal, UT 84078 * (435) 789-1017



AXIA ENERGY II
BUTCHER BUTTE #19-4C-22 TO
BUTCHER BUTTE #22-4D2-23
ON MAX W. ANDERSON INVESTMENT CO. LANDS
SECTION 19, T2S, R2W, U.S.B. & M.
DUCESNE COUNTY, UTAH

SURVEYED BY	C.R.	08-02-19	SCALE
DRAWN BY	L.K.	08-06-19	1" = 500'
FILE:	A - 1735 - A1		

PIPELINE RIGHT-OF-WAY

PIPELINE RIGHT-OF-WAY DESCRIPTION

A 30' WIDE RIGHT-OF-WAY 15' ON EACH SIDE OF THE FOLLOWING DESCRIBED CENTERLINE.

BEGINNING AT A POINT IN THE SW 1/4 SE 1/4 OF SECTION 19, T2S, R2W, U.S.B.&M., WHICH BEARS N79°12'41"W 2537.09' FROM THE SOUTHEAST CORNER OF SAID SECTION 19, THENCE N86°03'28"W 2699.01' TO A POINT ON THE WEST LINE OF LOT 4 OF SAID SECTION 19, WHICH BEARS N00°02'32"E 685.78' FROM THE SOUTHWEST CORNER OF SAID SECTION 19. THE SIDE LINES OF SAID DESCRIBED RIGHT-OF-WAY BEING SHORTENED OR ELONGATED TO MEET THE GRANTOR'S PROPERTY LINES. BASIS OF BEARINGS IS A G.P.S. OBSERVATION. CONTAINS 1.859 ACRES MORE OR LESS.

CERTIFICATE

THIS IS TO CERTIFY THAT THE ABOVE PLAT WAS PREPARED FROM FIELD NOTES OF ACTUAL SURVEYS MADE BY ME OR UNDER MY SUPERVISION AND THAT THE SAME ARE TRUE AND CORRECT TO THE BEST OF MY KNOWLEDGE AND BELIEF.



SHEET 2 OF 2

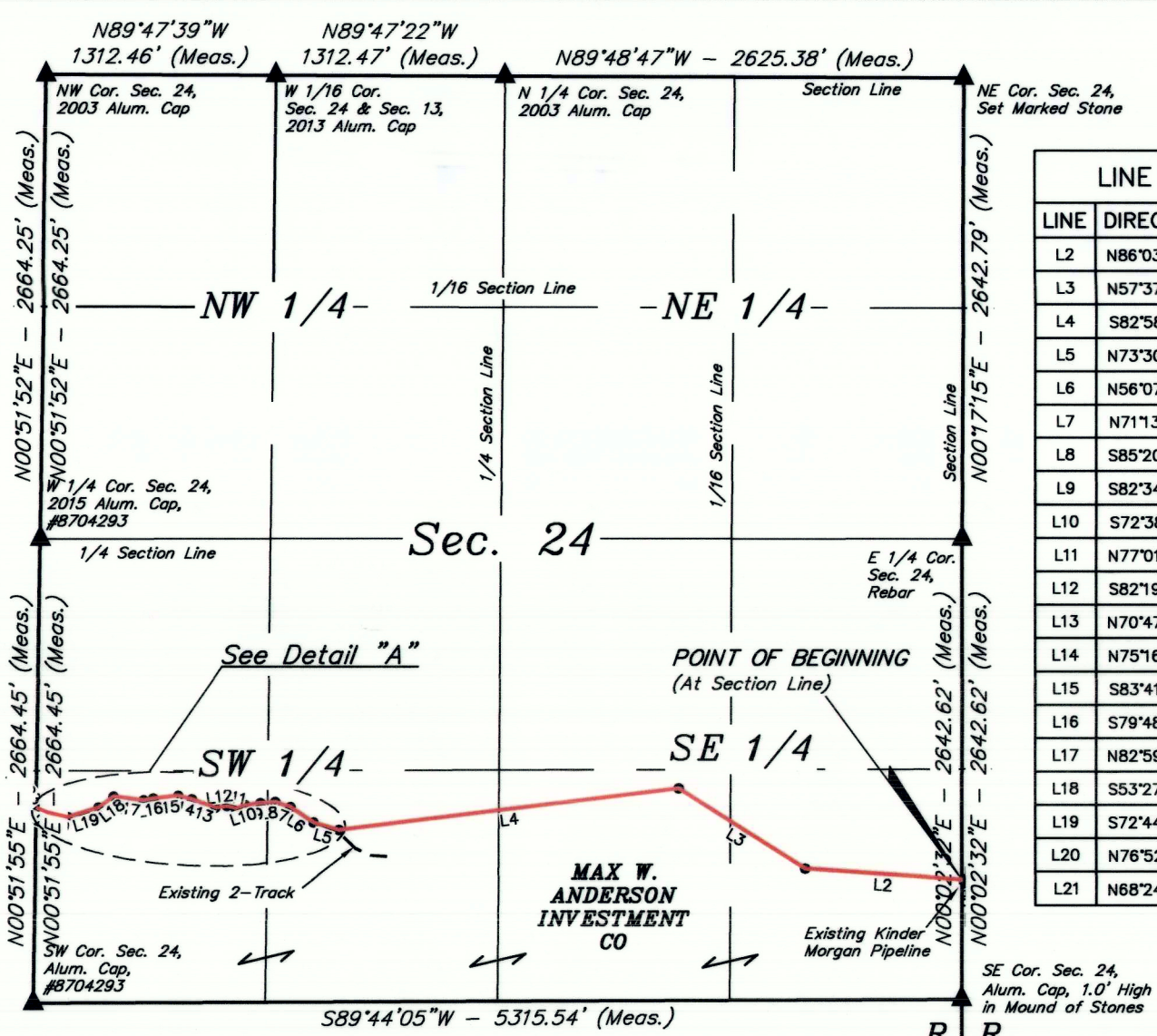
AXIA ENERGY II

**BUTCHER BUTTE #19-4C-22 TO
BUTCHER BUTTE #22-4D2-23
ON MAX W. ANDERSON INVESTMENT CO. LANDS
SECTION 19, T2S, R2W, U.S.B.&M.
DUCHESNE COUNTY, UTAH**

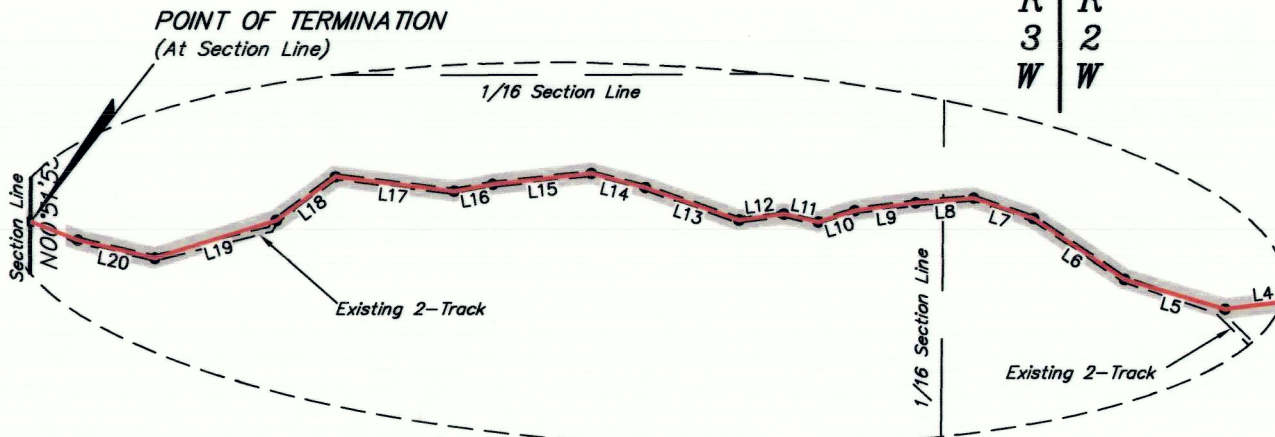
SURVEYED BY	C.R.	08-02-19	SCALE
DRAWN BY	L.K.	08-06-19	N/A
FILE:	A - 1735 - A2		
PIPELINE RIGHT-OF-WAY			



UELS, LLC
Corporate Office * 85 South 200 East
Vernal, UT 84078 * (435) 789-1017



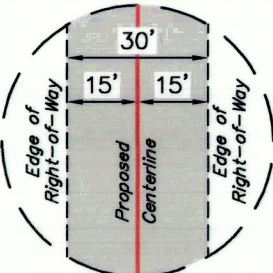
LINE TABLE		
LINE	DIRECTION	LENGTH
L2	N86°03'28"W	898.87'
L3	N57°37'00"W	859.88'
L4	S82°58'41"W	1957.69'
L5	N73°30'57"W	151.79'
L6	N56°07'43"W	158.74'
L7	N71°13'27"W	91.62'
L8	S85°20'08"W	84.60'
L9	S82°34'27"W	89.10'
L10	S72°38'11"W	55.73'
L11	N77°01'53"W	51.49'
L12	S82°19'48"W	65.94'
L13	N70°47'49"W	143.57'
L14	N75°16'25"W	81.06'
L15	S83°41'29"W	143.81'
L16	S79°48'35"W	56.77'
L17	N82°59'38"W	173.56'
L18	S53°27'03"W	106.83'
L19	S72°44'08"W	185.38'
L20	N76°52'01"W	114.32'
L21	N68°24'46"W	73.62'



POINT OF BEGINNING BEARS
 N00°02'32"E 685.78' FROM THE
 SOUTHEAST CORNER OF SECTION
 24, T2S, R3W, U.S.B.&M.

POINT OF TERMINATION BEARS
 N00°51'55"E 1119.86' FROM THE
 SOUTHWEST CORNER OF SECTION
 24, T2S, R3W, U.S.B.&M.

Detail "A"
 No Scale



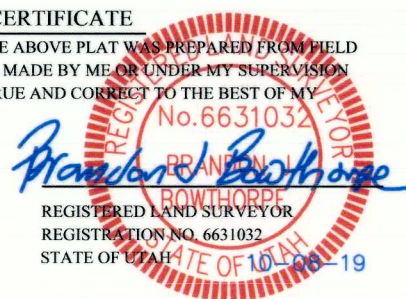
**TYPICAL
 RIGHT-OF-WAY
 DETAIL**
 NO SCALE



BASIS OF BEARINGS
 BASIS OF BEARINGS IS A G.P.S. OBSERVATION

ACREAGE / LENGTH TABLE			
PROPERTY OWNER	FEET	RODS	ACRES
MAX W. ANDERSON INVESTMENT CO.	5544.37	336.02	3.818

CERTIFICATE
 THIS IS TO CERTIFY THAT THE ABOVE PLAT WAS PREPARED FROM FIELD NOTES OF ACTUAL SURVEYS MADE BY ME OR UNDER MY SUPERVISION AND THAT THE SAME ARE TRUE AND CORRECT TO THE BEST OF MY KNOWLEDGE AND BELIEF.



▲ = SECTION CORNERS LOCATED.

AXIA ENERGY II
 BUTCHER BUTTE #19-4C-22 TO
 BUTCHER BUTTE #22-4D2-23
 ON MAX W. ANDERSON INVESTMENT CO. LANDS
 SECTION 24, T2S, R3W, U.S.B.&M.
 DUCHESNE COUNTY, UTAH

SURVEYED BY	C.R.	08-02-19	SCALE
DRAWN BY	L.K.	08-06-19	1" = 1000'
FILE:	A-1735-B1		

PIPELINE RIGHT-OF-WAY



UELS, LLC
 Corporate Office * 85 South 200 East
 Vernal, UT 84078 * (435) 789-1017



PIPELINE RIGHT-OF-WAY DESCRIPTION

A 30' WIDE RIGHT-OF-WAY 15' ON EACH SIDE OF THE FOLLOWING DESCRIBED CENTERLINE.

BEGINNING AT A POINT ON THE EAST LINE OF THE SE 1/4 SE 1/4 OF SECTION 24, T2S, R3W, U.S.B.&M., WHICH BEARS N00°02'32"E 685.78' FROM THE SOUTHEAST CORNER OF SAID SECTION 24, THENCE N86°03'28"W 898.87'; THENCE N57°37'00"W 859.88'; THENCE S82°58'41"W 1957.69'; THENCE N73°30'57"W 151.79'; THENCE N56°07'43"W 158.74'; THENCE N71°13'27"W 91.62'; THENCE S85°20'08"W 84.60'; THENCE S82°34'27"W 89.10'; THENCE S72°38'11"W 55.73'; THENCE N77°01'53"W 51.49'; THENCE S82°19'48"W 65.94'; THENCE N70°47'49"W 143.57'; THENCE N75°16'25"W 81.06'; THENCE S83°41'29"W 143.81'; THENCE S79°48'35"W 56.77'; THENCE N82°59'38"W 173.56'; THENCE S53°27'03"W 106.83'; THENCE S72°44'08"W 185.38'; THENCE N76°52'01"W 114.32'; THENCE N68°24'46"W 73.62' TO A POINT ON THE WEST LINE OF THE SW 1/4 SW 1/4 OF SAID SECTION 24, WHICH BEARS N00°51'55"E 1119.86' FROM THE SOUTHWEST CORNER OF SAID SECTION 24. THE SIDE LINES OF SAID DESCRIBED RIGHT-OF-WAY BEING SHORTENED OR ELONGATED TO MEET THE GRANTOR'S PROPERTY LINES. BASIS OF BEARINGS IS A G.P.S. OBSERVATION. CONTAINS 3.818 ACRES MORE OR LESS.

CERTIFICATE

THIS IS TO CERTIFY THAT THE ABOVE PLAT WAS PREPARED FROM FIELD NOTES OF ACTUAL SURVEYS MADE BY ME OR UNDER MY SUPERVISION AND THAT THE SAME ARE TRUE AND CORRECT TO THE BEST OF MY KNOWLEDGE AND BELIEF.



SHEET 2 OF 2

AXIA ENERGY II

**BUTCHER BUTTE #19-4C-22 TO
BUTCHER BUTTE #22-4D2-23
ON MAX W. ANDERSON INVESTMENT CO. LANDS
SECTION 24, T2S, R3W, U.S.B.&M.
DUCHEсне COUNTY, UTAH**

SURVEYED BY	C.R.	08-02-19	SCALE
DRAWN BY	L.K.	08-06-19	N/A
FILE:	A - 1735 - B2		

PIPELINE RIGHT-OF-WAY



UELS, LLC
Corporate Office * 85 South 200 East
Vernal, UT 84078 * (435) 789-1017