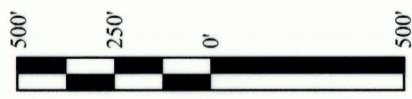
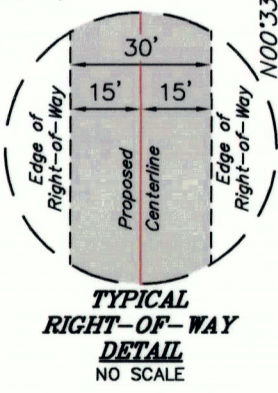


LINE TABLE		
LINE	DIRECTION	LENGTH
L1	S04°33'50"E	25.39'

SURFACE USE AREA
 BUTCHER BUTTE #20-4D-23 PAD,
 BUTCHER BUTTE #20-94EWH-23
 #20-104EWH-23, #20-114EWH-23,
 #28-41EWH-23, #21-121EWH-23,
 #29-44EWH-23, #20-124EWH-23,
 #28-31EWH-23, #21-131EWH-23,
 #29-34EWH-23, #20-134EWH-23,
 #20-74EWH-23 & #20-74EWH-2-23.



LENGTH TABLE			
PROPERTY OWNER	FEET	RODS	ACRES
MYRIN LIVESTOCK CO. LLC	25.39	1.54	0.017

CERTIFICATE
 THIS IS TO CERTIFY THAT THE ABOVE PLAT WAS PREPARED FROM FIELD NOTES OF ACTUAL SURVEYS MADE BY ME OR UNDER MY SUPERVISION AND THAT THE SAME ARE TRUE AND CORRECT TO THE BEST OF MY KNOWLEDGE AND BELIEF.

BRANDON J. ROTHORPE
 REGISTERED LAND SURVEYOR
 REGISTRATION NO. 6631032
 STATE OF UTAH

- ▲ = SECTION CORNERS LOCATED.
- △ = SECTION CORNERS RE-ESTABLISHED. (Not Set on Ground.)



UELS, LLC
 Corporate Office * 85 South 200 East
 Vernal, UT 84078 * (435) 789-1017



AXIA ENERGY II

BUTCHER BUTTE #20-4D-23 PAD
 BUTCHER BUTTE #20-94EWH-23 #20-104EWH-23, #20-114EWH-23,
 #28-41EWH-23, #21-121EWH-23, #29-44EWH-23, #20-124EWH-23,
 #28-31EWH-23, #21-131EWH-23, #29-34EWH-23,
 #20-134EWH-23, #20-74EWH-23 & #20-74EWH-2-23
 SE 1/4 SE 1/4, SECTION 20, T2S, R3W, U.S.B.&M.
 DUCHEсне COUNTY, UTAH

SURVEYED BY	C.R., B.H.	11-29-18	SCALE
DRAWN BY	R.T.	12-12-18	1" = 500'
FILE:	65195-A1		

ROAD RIGHT-OF-WAY

ROAD RIGHT-OF-WAY DESCRIPTION

A 30' WIDE RIGHT-OF-WAY 15' ON EACH SIDE OF THE FOLLOWING DESCRIBED CENTERLINE.

BEGINNING AT A POINT IN THE NE 1/4 SE 1/4 OF SECTION 20, T2S, R3W, U.S.B.&M., WHICH BEARS N26°39'43"W 1507.95' FROM THE SOUTHEAST CORNER OF SAID SECTION 20, THENCE S04°33'50"E 25.39' TO A POINT ON THE SOUTH LINE OF THE NE 1/4 SE 1/4 OF SAID SECTION 20, WHICH BEARS N27°01'50"W 1484.46' FROM THE SOUTHEAST CORNER OF SAID SECTION 20. THE SIDE LINES OF SAID DESCRIBED RIGHT-OF-WAY BEING SHORTENED OR ELONGATED TO MEET THE GRANTOR'S PROPERTY LINES. BASIS OF BEARINGS IS A G.P.S. OBSERVATION. CONTAINS 0.017 ACRES MORE OR LESS.

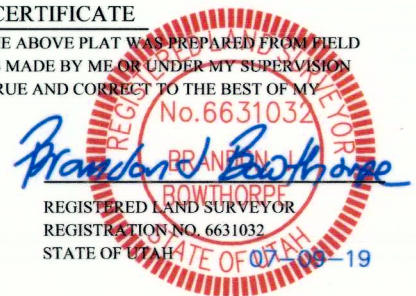
BEGINNING OF ROAD BEARS N26°39'43"W 1507.95' FROM THE SOUTHEAST CORNER OF SECTION 20, T2S, R3W, U.S.B.&M.

END OF ROAD BEARS N27°01'50"W 1484.46' FROM THE SOUTHEAST CORNER OF SECTION 20, T2S, R3W, U.S.B.&M.

LINE	DIRECTION	LENGTH
L1	S04°33'50"E	25.39'

CERTIFICATE

THIS IS TO CERTIFY THAT THE ABOVE PLAT WAS PREPARED FROM FIELD NOTES OF ACTUAL SURVEYS MADE BY ME OR UNDER MY SUPERVISION AND THAT THE SAME ARE TRUE AND CORRECT TO THE BEST OF MY KNOWLEDGE AND BELIEF.



LENGTH TABLE

PROPERTY OWNER	FEET	RODS	ACRES
MYRIN LIVESTOCK CO. LLC	25.39	1.54	0.017

SHEET 2 OF 2

REV: 1 07-09-19 S.C.S. (ADD WELLS)

AXIA ENERGY II

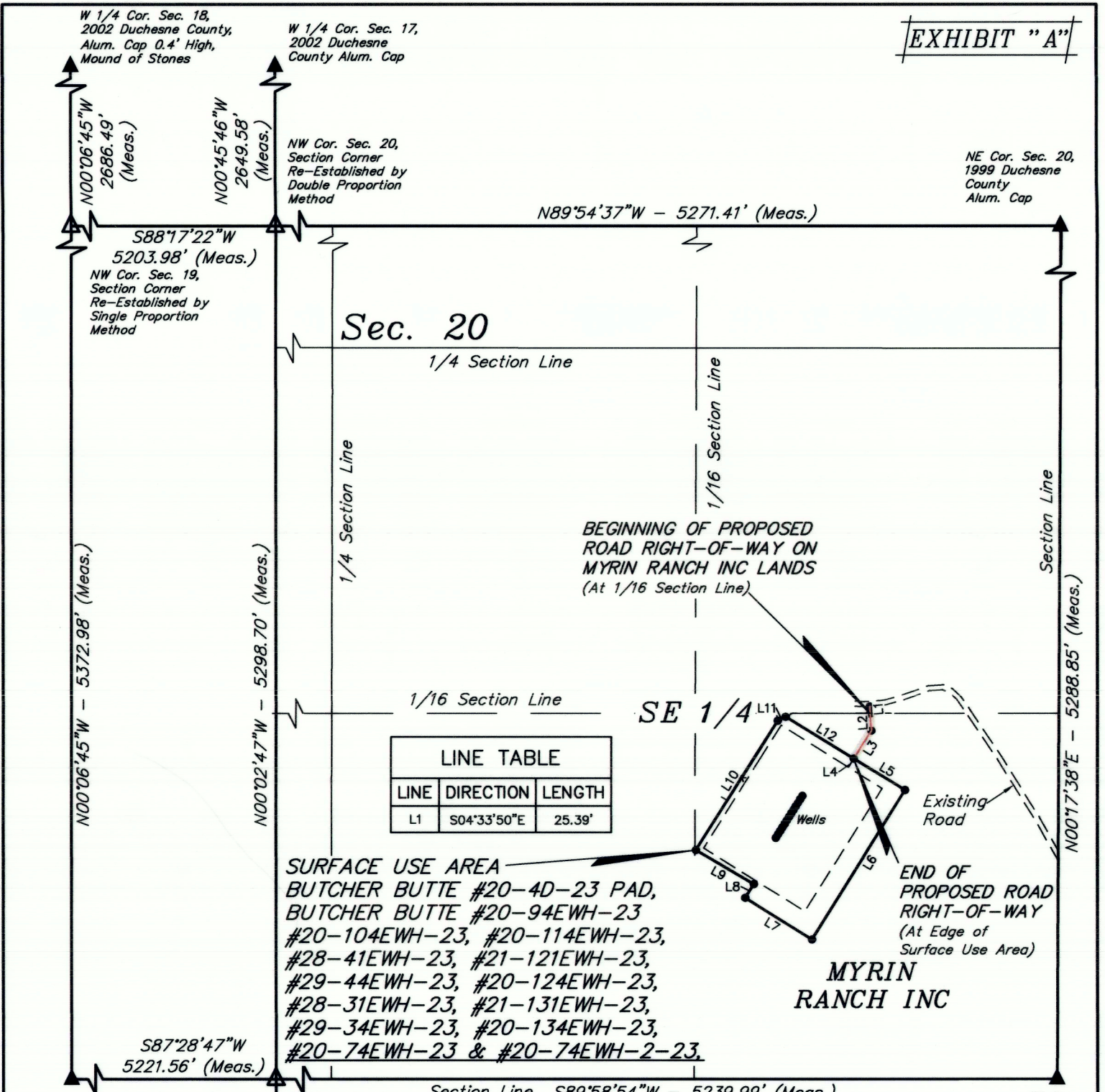
BUTCHER BUTTE #20-4D-23 PAD
 BUTCHER BUTTE #20-94EWH-23 #20-104EWH-23, #20-114EWH-23,
 #28-41EWH-23, #21-121EWH-23, #29-44EWH-23, #20-124EWH-23,
 #28-31EWH-23, #21-131EWH-23, #29-34EWH-23,
 #20-134EWH-23, #20-74EWH-23 & #20-74EWH-2-23
 SE 1/4 SE 1/4, SECTION 20, T2S, R3W, U.S.B.&M.
 DUCHESNE COUNTY, UTAH

SURVEYED BY	C.R., B.H.	11-29-18	SCALE
DRAWN BY	R.T.	12-12-18	N/A
FILE:	65195-A2		

ROAD RIGHT-OF-WAY

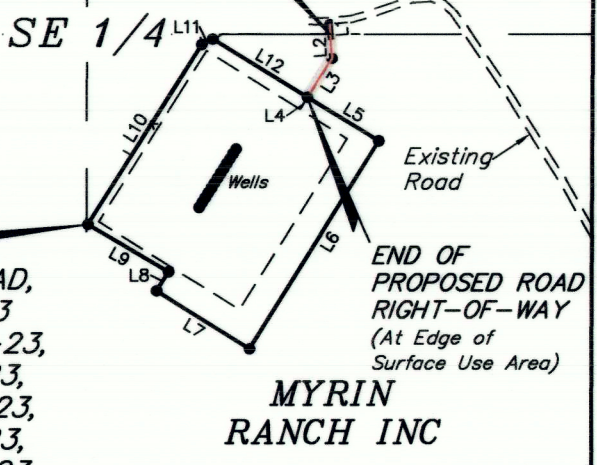


UELS, LLC
 Corporate Office * 85 South 200 East
 Vernal, UT 84078 * (435) 789-1017



LINE TABLE		
LINE	DIRECTION	LENGTH
L1	S04°33'50"E	25.39'

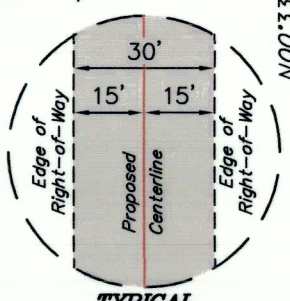
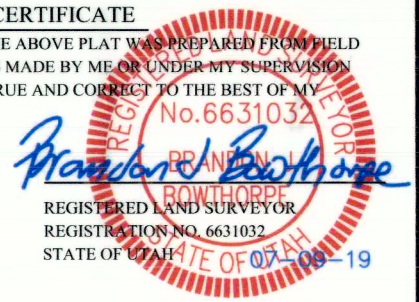
SURFACE USE AREA
 BUTCHER BUTTE #20-4D-23 PAD,
 BUTCHER BUTTE #20-94EWH-23
 #20-104EWH-23, #20-114EWH-23,
 #28-41EWH-23, #21-121EWH-23,
 #29-44EWH-23, #20-124EWH-23,
 #28-31EWH-23, #21-131EWH-23,
 #29-34EWH-23, #20-134EWH-23,
 #20-74EWH-23 & #20-74EWH-2-23.



LINE TABLE			LINE TABLE		
LINE	DIRECTION	LENGTH	LINE	DIRECTION	LENGTH
L2	S03°45'58"E	62.34'	L8	N32°06'55"E	58.32'
L3	S32°11'15"W	119.53'	L9	N59°25'52"W	242.75'
L4	S32°09'36"W	37.01'	L10	N32°12'58"E	553.59'
L5	S58°32'22"E	217.22'	L11	N63°34'52"E	31.69'
L6	S31°48'47"W	637.46'	L12	S58°19'24"E	288.62'
L7	N57°48'31"W	284.03'			

CERTIFICATE

THIS IS TO CERTIFY THAT THE ABOVE PLAT WAS PREPARED FROM FIELD NOTES OF ACTUAL SURVEYS MADE BY ME OR UNDER MY SUPERVISION AND THAT THE SAME ARE TRUE AND CORRECT TO THE BEST OF MY KNOWLEDGE AND BELIEF.



ACREAGE / LENGTH TABLE			
SURFACE USE AREA OWNERSHIP			ACRES
MYRIN RANCH INC			7.327
ACCESS ROAD OWNERSHIP	FEET	RODS	ACRES
MYRIN RANCH	181.87	11.02	0.125

- ▲ = SECTION CORNERS LOCATED.
- △ = SECTION CORNERS RE-ESTABLISHED. (Not Set on Ground.)



UELS, LLC
 Corporate Office * 85 South 200 East
 Vernal, UT 84078 * (435) 789-1017



AXIA ENERGY II

BUTCHER BUTTE #20-4D-23 PAD
 BUTCHER BUTTE #20-94EWH-23 #20-104EWH-23, #20-114EWH-23,
 #28-41EWH-23, #21-121EWH-23, #29-44EWH-23, #20-124EWH-23,
 #28-31EWH-23, #21-131EWH-23, #29-34EWH-23,
 #20-134EWH-23, #20-74EWH-23 & #20-74EWH-2-23
 SE 1/4 SE 1/4, SECTION 20, T2S, R3W, U.S.B.&M.
 DUCHESNE COUNTY, UTAH

SURVEYED BY	C.R., B.H.	11-29-18	SCALE
DRAWN BY	R.T.	12-12-18	1" = 500'
FILE:	6 5 1 9 5 - B1		

ROAD RIGHT-OF-WAY

ROAD RIGHT-OF-WAY DESCRIPTION

A 30' WIDE RIGHT-OF-WAY 15' ON EACH SIDE OF THE FOLLOWING DESCRIBED CENTERLINE.

BEGINNING AT A POINT ON THE NORTH LINE OF THE SE 1/4 SE/4 OF SECTION 20, T2S, R3W, U.S.B.&M., WHICH BEARS N27°01'50"W 1484.46' FROM THE SOUTHEAST CORNER OF SAID SECTION 20, THENCE S03°45'58"E 62.34', THENCE S32°11'15"W 119.53' TO A POINT IN THE SE 1/4 SE 1/4 OF SAID SECTION 20, WHICH BEARS N32°21'19"W 1371.93' FROM THE SOUTHEAST CORNER OF SAID SECTION 20. THE SIDE LINES OF SAID DESCRIBED RIGHT-OF-WAY BEING SHORTENED OR ELONGATED TO MEET THE GRANTOR'S PROPERTY LINES. BASIS OF BEARINGS IS A G.P.S. OBSERVATION. CONTAINS 0.125 ACRES MORE OR LESS.

BEGINNING OF ROAD BEARS N27°01'50"W 1484.46 FROM THE SOUTHEAST CORNER OF SECTION 20, T2S, R3W, U.S.B.&M.

END OF ROAD BEARS N32°21'19"W 1371.93' FROM THE SOUTHEAST CORNER OF SECTION 20, T2S, R3W, U.S.B.&M.

SURFACE USE AREA DESCRIPTION

BEGINNING AT A POINT IN THE SE 1/4 SE 1/4 OF SECTION 20, T2S, R3W, U.S.B.&M., WHICH BEARS N32°21'19"W 1371.93' FROM THE SOUTHEAST CORNER OF SAID SECTION 20, THENCE S58°32'22"E 217.22'; THENCE S31°48'47"W 637.46'; THENCE N57°48'31"W 284.03'; THENCE N32°06'55"E 58.32'; THENCE N59°25'52"W 242.75'; THENCE N32°12'38"E 553.59'; THENCE N63°34'52"E 31.69'; THENCE S58°19'24"E 288.62' TO THE POINT OF BEGINNING. BASIS OF BEARINGS IS A G.P.S. OBSERVATION. CONTAINS 7.327 ACRES MORE OR LESS.

S03°45'58" E 62.34' (MEAS.)

LINE TABLE			LINE TABLE		
LINE	DIRECTION	LENGTH	LINE	DIRECTION	LENGTH
L2	S03°45'58"E	62.34'	L8	N32°06'55"E	58.32'
L3	S32°11'15"W	119.53'	L9	N59°25'52"W	242.75'
L4	S32°09'36"W	37.01'	L10	N32°12'58"E	553.59'
L5	S58°32'22"E	217.22'	L11	N63°34'52"E	31.69'
L6	S31°48'47"W	637.46'	L12	S58°19'24"E	288.62'
L7	N57°48'31"W	284.03'			

CERTIFICATE

THIS IS TO CERTIFY THAT THE ABOVE PLAT WAS PREPARED FROM FIELD NOTES OF ACTUAL SURVEYS MADE BY ME OR UNDER MY SUPERVISION AND THAT THE SAME ARE TRUE AND CORRECT TO THE BEST OF MY KNOWLEDGE AND BELIEF.



ACREAGE / LENGTH TABLE			
SURFACE USE AREA OWNERSHIP			ACRES
MYRIN RANCH INC			7.327
ACCESS ROAD OWNERSHIP	FEET	RODS	ACRES
MYRIN RANCH	181.87	11.02	0.125

SHEET 2 OF 2

REV: 2 07-09-19 S.C.S. (ADD WELLS)

AXIA ENERGY II

BUTCHER BUTTE #20-4D-23 PAD
 BUTCHER BUTTE #20-94EWH-23 #20-104EWH-23, #20-114EWH-23,
 #28-41EWH-23, #21-121EWH-23, #29-44EWH-23, #20-124EWH-23,
 #28-31EWH-23, #21-131EWH-23, #29-34EWH-23,
 #20-134EWH-23, #20-74EWH-23 & #20-74EWH-2-23
 SE 1/4 SE 1/4, SECTION 20, T2S, R3W, U.S.B.&M.
 DUCHESNE COUNTY, UTAH

SURVEYED BY	C.R., B.H.	11-29-18	SCALE
DRAWN BY	R.T.	12-12-18	N/A
FILE:	65195-B2		

ROAD RIGHT-OF-WAY



UELS, LLC
 Corporate Office * 85 South 200 East
 Vernal, UT 84078 * (435) 789-1017