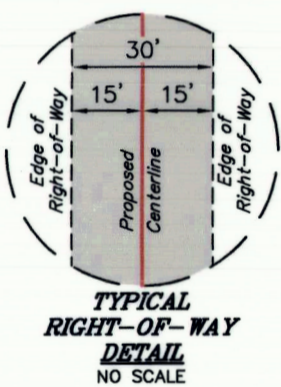


SURFACE USE AREA
 BUTCHER BUTTE #13-2B-24 PAD
 BUTCHER BUTTE #18-81EWH-23,
 #7-91EWH-23, #18-71EWH-23,
 #7-101EWH-23, #18-61EWH-23,
 #7-111EWH-23, #18-51EWH-23,
 #7-121EWH-23, #18-41EWH-23,
 #7-131EWH-23 & #18-31EWH-23

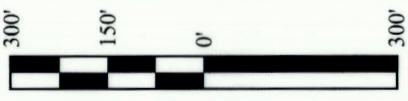
MYRIN RANCH INC

LINE TABLE		
LINE	DIRECTION	LENGTH
L1	S44°58'48"E	100.37'
L2	S44°58'48"E	279.47'
L3	N47°47'12"E	585.89'
L4	N69°02'03"E	80.23'

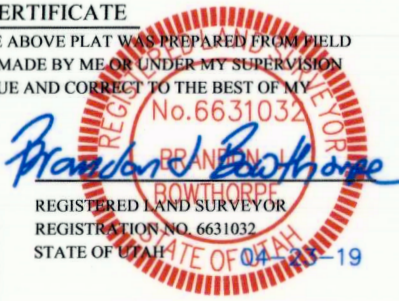


Sec. 13

SE 1/4



CERTIFICATE
 THIS IS TO CERTIFY THAT THE ABOVE PLAT WAS PREPARED FROM FIELD NOTES OF ACTUAL SURVEYS MADE BY ME OR UNDER MY SUPERVISION AND THAT THE SAME ARE TRUE AND CORRECT TO THE BEST OF MY KNOWLEDGE AND BELIEF.



ACREAGE / LENGTH TABLE			
PIPELINE OWNERSHIP	FEET	RODS	ACRES
MYRIN RANCH INC	945.59	57.31	0.651

W 1/4 Cor. Sec. 18, T2S, R3W, U.S.B.&M. 2004 Duchesne County Alum. Cap, 0.4' High, Mound of Stones

E 1/4 Cor. Sec. 13, Section Corner Re-Established by Single Proportion (Not Set on Ground)

SW Cor. Sec. 18, T2S, R3W, U.S.B.&M. Section Corner Re-Established by Single Proportion (Not Set on Ground)

SE Cor. Sec. 13, Section Corner Re-Established by Single Proportion (Not Set on Ground)

SW Cor. Sec. 19, T2S, R3W, U.S.B.&M. 1985 Alum. Cap

SHEET 1 OF 2

- ▲ = SECTION CORNERS LOCATED.
- △ = SECTION CORNERS RE-ESTABLISHED. (Not Set on Ground.)



UELS, LLC
 Corporate Office * 85 South 200 East
 Vernal, UT 84078 * (435) 789-1017



AXIA ENERGY II
 BUTCHER BUTTE #13-2B-24 PAD
 BUTCHER BUTTE #18-81EWH-23, #7-91EWH-23, #18-71EWH-23,
 #7-101EWH-23, #18-61EWH-23, #7-111EWH-23, #18-51EWH-23,
 #7-121EWH-23, #18-41EWH-23, #7-131EWH-23 & #18-31EWH-23
 PIPELINE RIGHT-OF-WAY ON MYRIN RANCH INC LANDS
 SECTION 13, T2S, R4W, U.S.B.&M.
 DUCHESNE COUNTY, UTAH

SURVEYED BY	C.R., B.H.	04-09-19	SCALE
DRAWN BY	C.IVIE	04-10-19	1" = 300'
FILE:	6 5 7 1 9-A1		

PIPELINE RIGHT-OF-WAY

PIPELINE RIGHT-OF-WAY DESCRIPTION

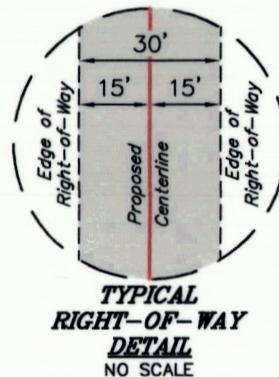
A 30' WIDE RIGHT-OF-WAY 15' ON EACH SIDE OF THE FOLLOWING DESCRIBED CENTERLINE.

BEGINNING AT A POINT IN THE NE 1/4 NE 1/4 OF SECTION 13, T2S, R4W, U.S.B.&M., WHICH BEARS S63°51'08"W 786.96' FROM THE NORTHEAST CORNER OF SAID SECTION 13, THENCE S44°58'48"E 279.47'; THENCE N47°47'12"E 585.89'; THENCE N69°02'03"E 80.23' TO A POINT ON THE EAST LINE OF THE NE 1/4 NE 1/4 OF SAID SECTION 13, WHICH BEARS S00°00'41"W 122.13' FROM THE NORTHEAST CORNER OF SAID SECTION 13. THE SIDE LINES OF SAID DESCRIBED RIGHT-OF-WAY BEING SHORTENED OR ELONGATED TO MEET THE GRANTOR'S PROPERTY LINES. BASIS OF BEARINGS IS A G.P.S. OBSERVATION. CONTAINS 0.651 ACRES MORE OR LESS.

BEGINNING OF PIPELINE BEARS S63°51'08"W 786.96' FROM THE NORTHEAST CORNER OF SECTION 13, T2S, R4W, U.S.B.&M.

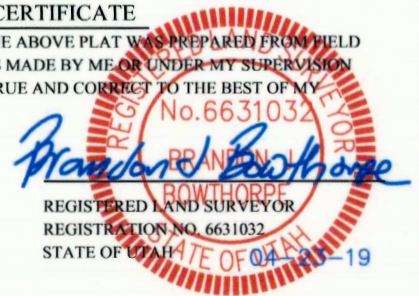
END OF PIPELINE BEARS S00°00'41"W 122.13' FROM THE NORTHEAST CORNER OF SECTION 13, T2S, R4W, U.S.B.&M.

LINE TABLE		
LINE	DIRECTION	LENGTH
L1	S44°58'48"E	100.37'
L2	S44°58'48"E	279.47'
L3	N47°47'12"E	585.89'
L4	N69°02'03"E	80.23'



CERTIFICATE

THIS IS TO CERTIFY THAT THE ABOVE PLAT WAS PREPARED FROM FIELD NOTES OF ACTUAL SURVEYS MADE BY ME OR UNDER MY SUPERVISION AND THAT THE SAME ARE TRUE AND CORRECT TO THE BEST OF MY KNOWLEDGE AND BELIEF.



ACREAGE / LENGTH TABLE			
PIPELINE OWNERSHIP	FEET	RODS	ACRES
MYRIN RANCH INC	945.59	57.31	0.651

SHEET 2 OF 2

AXIA ENERGY II

BUTCHER BUTTE #13-2B-24 PAD
 BUTCHER BUTTE #18-81EWH-23, #7-91EWH-23, #18-71EWH-23,
 #7-101EWH-23, #18-61EWH-23, #7-111EWH-23, #18-51EWH-23,
 #7-121EWH-23, #18-41EWH-23, #7-131EWH-23 & #18-31EWH-23
 PIPELINE RIGHT-OF-WAY ON MYRIN RANCH INC LANDS
 SECTION 13, T2S, R4W, U.S.B.&M.
 DUCHESNE COUNTY, UTAH

SURVEYED BY	C.R., B.H.	04-09-19	SCALE
DRAWN BY	C.IVIE	04-10-19	N/A
FILE:	65719-A2		
PIPELINE RIGHT-OF-WAY			



UELS, LLC
 Corporate Office * 85 South 200 East
 Vernal, UT 84078 * (435) 789-1017

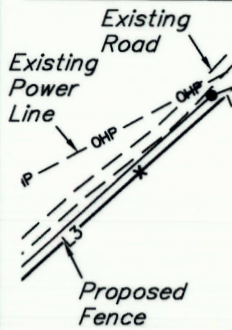
NW Cor. Sec. 18,
Spike, Flush W/Road

S00°01'02"W - 380.73' (Meas.)

72"W - 380.73' (Meas.)
Section Line

NE Cor. Sec. 13, T2S, R4W, U.S.B.&M., 2004 Duchesne
County Alum. Cap, 0.4' High, Mound of Stones

**MYRIN
RANCH INC**



END OF
PROPOSED
PIPELINE
RIGHT-OF-WAY
(At Existing Pipeline)

LOT 1

BEGINNING OF PROPOSED
PIPELINE
RIGHT-OF-WAY
(At Section Line)

LINE TABLE		
LINE	DIRECTION	LENGTH
L1	N69°02'03"E	25.18'

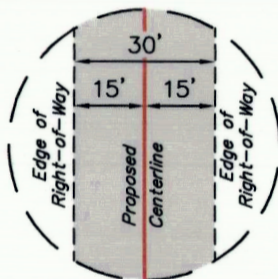
Section Line

N00°00'41"E - 2307.53' (Meas.)

NW 1/4 1/16 Section Line

LOT 2

R
4
W



**TYPICAL
RIGHT-OF-WAY
DETAIL**
NO SCALE

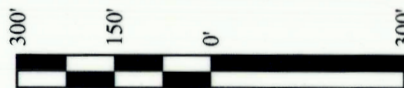
1/16 Section Line

W 1/4 Cor. Sec. 18,
2004 Duchesne County
Alum. Cap, 0.4' High,
Mound of Stones

1/4 Section Line

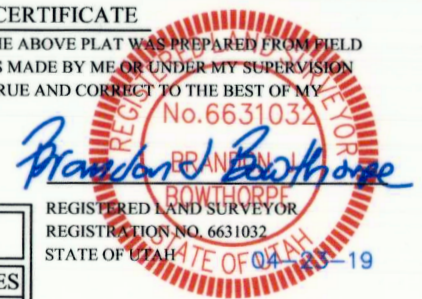
Sec. 18

SW 1/4



CERTIFICATE

THIS IS TO CERTIFY THAT THE ABOVE PLAT WAS PREPARED FROM FIELD NOTES OF ACTUAL SURVEYS MADE BY ME OR UNDER MY SUPERVISION AND THAT THE SAME ARE TRUE AND CORRECT TO THE BEST OF MY KNOWLEDGE AND BELIEF.



ACREAGE / LENGTH TABLE			
PIPELINE OWNERSHIP	FEET	RODS	ACRES
MYRIN RANCH INC	25.18	1.53	0.017

REGISTERED LAND SURVEYOR
REGISTRATION NO. 6631032
STATE OF UTAH

SHEET 1 OF 2

- ▲ = SECTION CORNERS LOCATED.
- △ = SECTION CORNERS RE-ESTABLISHED.
(Not Set on Ground.)



UELS, LLC
Corporate Office * 85 South 200 East
Vernal, UT 84078 * (435) 789-1017



AXIA ENERGY II

BUTCHER BUTTE #13-2B-24 PAD
BUTCHER BUTTE #18-81EWH-23, #7-91EWH-23, #18-71EWH-23,
#7-101EWH-23, #18-61EWH-23, #7-111EWH-23, #18-51EWH-23,
#7-121EWH-23, #18-41EWH-23, #7-131EWH-23 & #18-31EWH-23
PIPELINE RIGHT-OF-WAY ON MYRIN RANCH INC LANDS
SECTION 18, T2S, R3W, U.S.B.&M.
DUCESNE COUNTY, UTAH

SURVEYED BY	C.R., B.H.	04-09-19	SCALE
DRAWN BY	C.IVIE	04-10-19	1" = 300'
FILE:	6 5 7 1 9-B1		

PIPELINE RIGHT-OF-WAY

PIPELINE RIGHT-OF-WAY DESCRIPTION

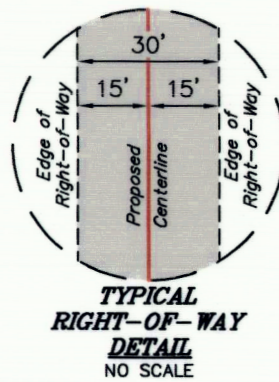
A 30' WIDE RIGHT-OF-WAY 15' ON EACH SIDE OF THE FOLLOWING DESCRIBED CENTERLINE.

BEGINNING AT A POINT ON THE WEST LINE OF LOT 1 OF SECTION 18, T2S, R3W, U.S.B.&M., WHICH BEARS S00°00'41"W 122.13' FROM NORTHEAST CORNER OF SECTION 13, T2S, R4W, U.S.B.&M., THENCE N69°02'03"E 25.18' TO A POINT IN LOT 1 OF SAID SECTION 18, WHICH BEARS S11°43'48"E 115.53' FROM THE NORTHEAST CORNER OF SAID SECTION 13. THE SIDE LINES OF SAID DESCRIBED RIGHT-OF-WAY BEING SHORTENED OR ELONGATED TO MEET THE GRANTOR'S PROPERTY LINES. BASIS OF BEARINGS IS A G.P.S. OBSERVATION. CONTAINS 0.017 ACRES MORE OR LESS.

BEGINNING OF PIPELINE BEARS S00°00'41"W 122.13' FROM THE NORTHEAST CORNER OF SECTION 13, T2S, R4W, U.S.B.&M.

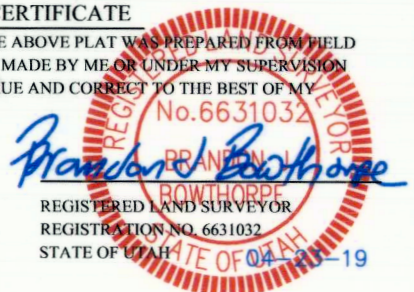
END OF PIPELINE BEARS S11°43'48"E 115.53' FROM THE NORTHEAST CORNER OF SECTION 13, T2S, R4W, U.S.B.&M.

LINE TABLE		
LINE	DIRECTION	LENGTH
L1	N69°02'03"E	25.18'



CERTIFICATE

THIS IS TO CERTIFY THAT THE ABOVE PLAT WAS PREPARED FROM FIELD NOTES OF ACTUAL SURVEYS MADE BY ME OR UNDER MY SUPERVISION AND THAT THE SAME ARE TRUE AND CORRECT TO THE BEST OF MY KNOWLEDGE AND BELIEF.



ACREAGE / LENGTH TABLE			
PIPELINE OWNERSHIP	FEET	RODS	ACRES
MYRIN RANCH INC	25.18	1.53	0.017

SHEET 2 OF 2

AXIA ENERGY II

BUTCHER BUTTE #13-2B-24 PAD
 BUTCHER BUTTE #18-81EWH-23, #7-91EWH-23, #18-71EWH-23,
 #7-101EWH-23, #18-61EWH-23, #7-111EWH-23, #18-51EWH-23,
 #7-121EWH-23, #18-41EWH-23, #7-131EWH-23 & #18-31EWH-23
 PIPELINE RIGHT-OF-WAY ON MYRIN RANCH INC LANDS
 SECTION 18, T2S, R3W, U.S.B.&M.
 DUCHESNE COUNTY, UTAH

SURVEYED BY	C.R., B.H.	04-09-19	SCALE
DRAWN BY	C.IVIE	04-10-19	N/A
FILE:	6 5 7 1 9-B2		
PIPELINE RIGHT-OF-WAY			



UELS, LLC
 Corporate Office * 85 South 200 East
 Vernal, UT 84078 * (435) 789-1017