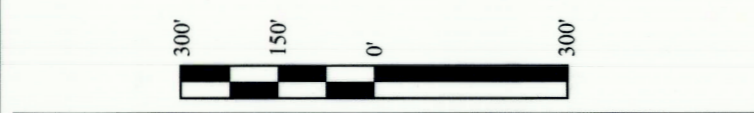


LINE TABLE		
LINE	DIRECTION	LENGTH
L9	N89°36'00\"W	302.41'
L10	N89°52'31\"W	262.70'
L11	S53°37'29\"W	261.41'
L12	S48°02'00\"W	273.07'
L13	S37°08'46\"W	301.68'
L14	S24°09'15\"W	233.09'
L15	S00°24'12\"E	683.30'
L16	S59°45'49\"E	179.66'
L17	S26°03'10\"E	351.61'
L18	S00°57'38\"W	260.58'
L19	S28°49'00\"W	235.90'
L20	S15°19'42\"W	66.74'
L21	S03°10'55\"W	187.90'



LENGTH TABLE			
PROPERTY OWNER	FEET	RODS	ACRES
BRENT C BROTHERSON TRUSTEE	3600.06	218.19	2.479

CERTIFICATE
 THIS IS TO CERTIFY THAT THE ABOVE PLAT WAS PREPARED FROM FIELD NOTES OF ACTUAL SURVEYS MADE BY ME OR UNDER MY SUPERVISION AND THAT THE SAME ARE TRUE AND CORRECT TO THE BEST OF MY KNOWLEDGE AND BELIEF.

Brandon Brotherson
 REGISTERED LAND SURVEYOR
 REGISTRATION NO. 6631032
 STATE OF UTAH

SHEET 1 OF 2

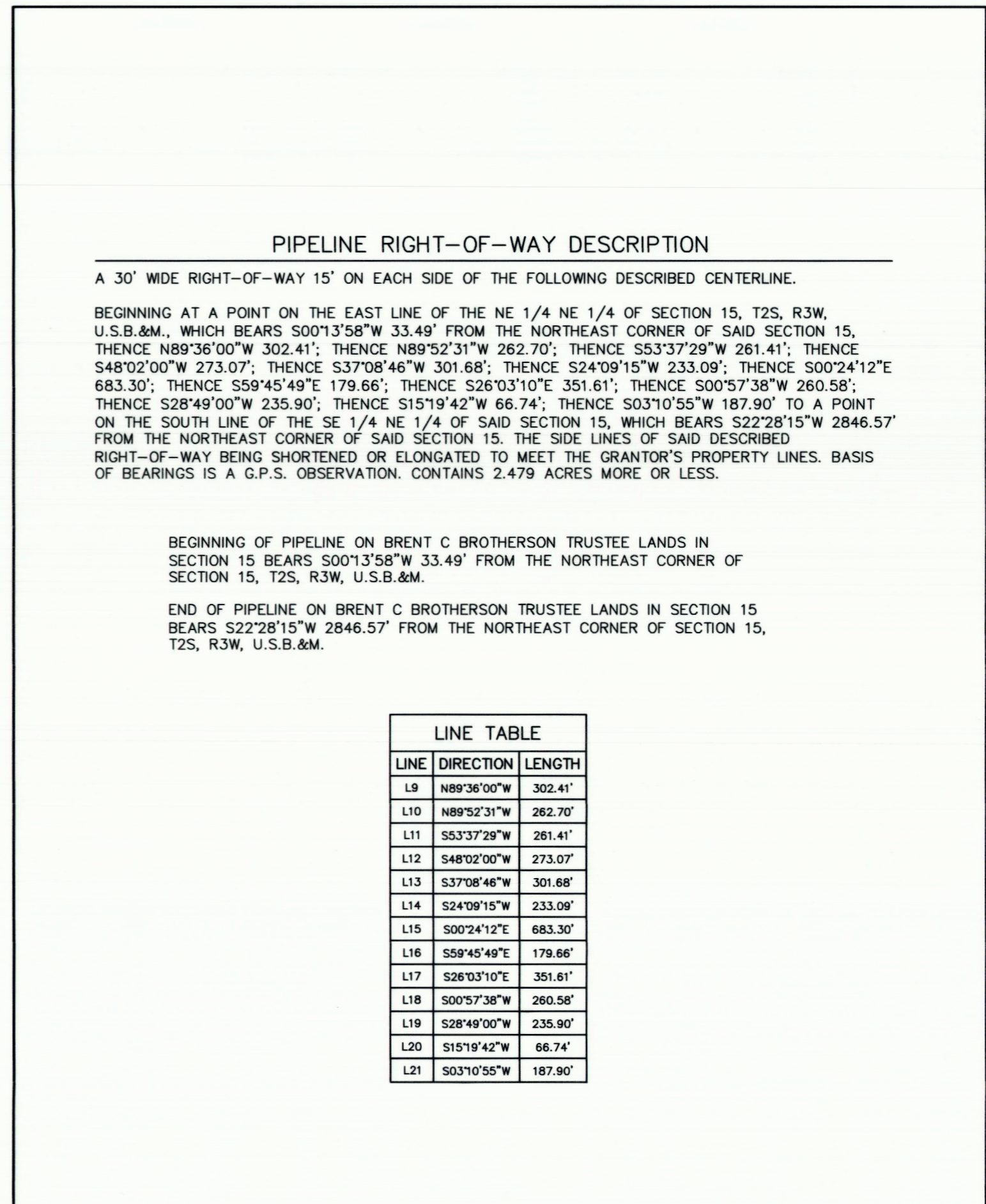
AXIA ENERGY II

LAYFLAT PIPELINE RIGHT-OF-WAY ON BRENT C BROTHERSON TRUSTEE LANDS SECTION 15, T2S, R3W, U.S.B.&M. DUCHESNE COUNTY, UTAH

SURVEYED BY	C.R., J.L.	09-13-18	SCALE
DRAWN BY	J.J.	09-24-18	1" = 300'
FILE:	64710-E1		

PIPELINE RIGHT-OF-WAY

UELTS, LLC
 Corporate Office * 85 South 200 East
 Vernal, UT 84078 * (435) 789-1017



LINE TABLE		
LINE	DIRECTION	LENGTH
L9	N89°36'00\"W	302.41'
L10	N89°52'31\"W	262.70'
L11	S53°37'29\"W	261.41'
L12	S48°02'00\"W	273.07'
L13	S37°08'46\"W	301.68'
L14	S24°09'15\"W	233.09'
L15	S00°24'12\"E	683.30'
L16	S59°45'49\"E	179.66'
L17	S26°03'10\"E	351.61'
L18	S00°57'38\"W	260.58'
L19	S28°49'00\"W	235.90'
L20	S15°19'42\"W	66.74'
L21	S03°10'55\"W	187.90'

CERTIFICATE
 THIS IS TO CERTIFY THAT THE ABOVE PLAT WAS PREPARED FROM FIELD NOTES OF ACTUAL SURVEYS MADE BY ME OR UNDER MY SUPERVISION AND THAT THE SAME ARE TRUE AND CORRECT TO THE BEST OF MY KNOWLEDGE AND BELIEF.

Brandon Brotherson
 REGISTERED LAND SURVEYOR
 REGISTRATION NO. 6631032
 STATE OF UTAH

SHEET 2 OF 2

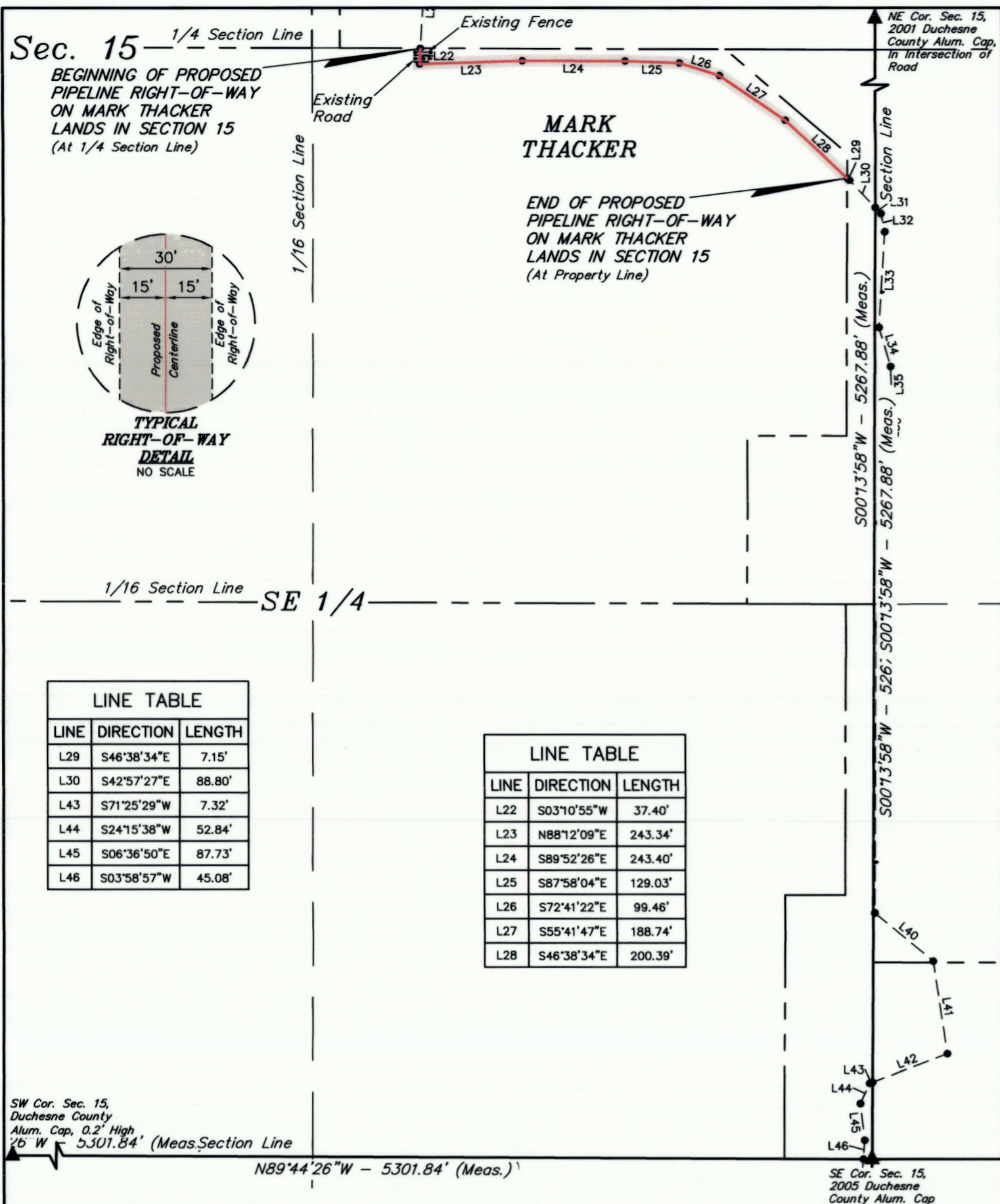
AXIA ENERGY II

LAYFLAT PIPELINE RIGHT-OF-WAY ON BRENT C BROTHERSON TRUSTEE LANDS SECTION 15, T2S, R3W, U.S.B.&M. DUCHESNE COUNTY, UTAH

SURVEYED BY	C.R., J.L.	09-13-18	SCALE
DRAWN BY	J.J.	09-24-18	N/A
FILE:	64710-E2		

PIPELINE RIGHT-OF-WAY

UELTS, LLC
 Corporate Office * 85 South 200 East
 Vernal, UT 84078 * (435) 789-1017



LINE TABLE

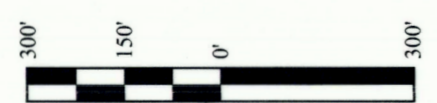
LINE	DIRECTION	LENGTH
L29	S46°38'34"E	7.15'
L30	S42°57'27"E	88.80'
L43	S71°25'29"W	7.32'
L44	S24°15'38"W	52.84'
L45	S06°36'50"E	87.73'
L46	S03°58'57"W	45.08'

LINE TABLE

LINE	DIRECTION	LENGTH
L22	S03°10'55"W	37.40'
L23	N88°12'09"E	243.34'
L24	S89°52'26"E	243.40'
L25	S87°58'04"E	129.03'
L26	S72°41'22"E	99.46'
L27	S55°41'47"E	188.74'
L28	S46°38'34"E	200.39'

SW Cor. Sec. 15,
Duchesne County
Alum. Cap. 0.2' High
1/6 W 5301.84' (Meas. Section Line)

SE Cor. Sec. 15,
2005 Duchesne
County Alum. Cap.



LENGTH TABLE

PROPERTY OWNER	FEET	RODS	ACRES
MARK THACKER	1141.77	69.20	0.786

CERTIFICATE
THIS IS TO CERTIFY THAT THE ABOVE PLAT WAS PREPARED FROM FIELD NOTES OF ACTUAL SURVEYS MADE BY ME OR UNDER MY SUPERVISION AND THAT THE SAME ARE TRUE AND CORRECT TO THE BEST OF MY KNOWLEDGE AND BELIEF.

Brandon R. Bothome
REGISTERED LAND SURVEYOR
REGISTRATION NO. 6631032
STATE OF UTAH

SHEET 1 OF 2

▲ = SECTION CORNERS LOCATED.

AXIA ENERGY II

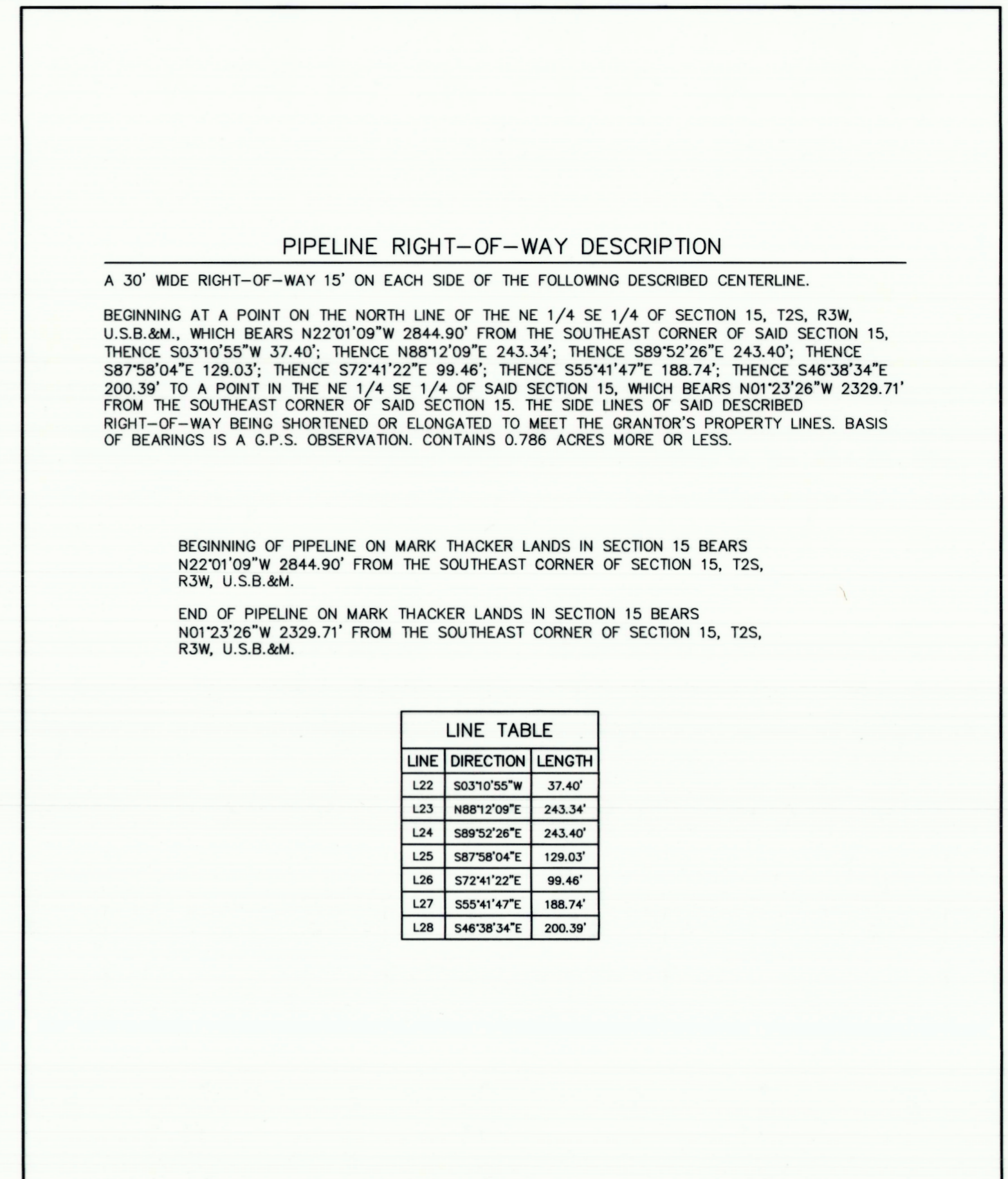
LAYFLAT PIPELINE RIGHT-OF-WAY ON MARK THACKER LANDS SECTION 15, T2S, R3W, U.S.B.&M. DUCHESNE COUNTY, UTAH

SURVEYED BY	C.R., J.L.	09-13-18	SCALE
DRAWN BY	J.J.	09-24-18	1" = 300'
FILE:	64710-F1		

PIPELINE RIGHT-OF-WAY

UELS, LLC
Corporate Office * 85 South 200 East
Vernal, UT 84078 * (435) 789-1017

UINTAH
ENGINEERING & LAND SURVEYING



PIPELINE RIGHT-OF-WAY DESCRIPTION

A 30' WIDE RIGHT-OF-WAY 15' ON EACH SIDE OF THE FOLLOWING DESCRIBED CENTERLINE.

BEGINNING AT A POINT ON THE NORTH LINE OF THE NE 1/4 SE 1/4 OF SECTION 15, T2S, R3W, U.S.B.&M., WHICH BEARS N22°01'09"W 2844.90' FROM THE SOUTHEAST CORNER OF SAID SECTION 15, THENCE S03°10'55"W 37.40'; THENCE N88°12'09"E 243.34'; THENCE S89°52'26"E 243.40'; THENCE S87°58'04"E 129.03'; THENCE S72°41'22"E 99.46'; THENCE S55°41'47"E 188.74'; THENCE S46°38'34"E 200.39' TO A POINT IN THE NE 1/4 SE 1/4 OF SAID SECTION 15, WHICH BEARS N01°23'26"W 2329.71' FROM THE SOUTHEAST CORNER OF SAID SECTION 15. THE SIDE LINES OF SAID DESCRIBED RIGHT-OF-WAY BEING SHORTENED OR ELONGATED TO MEET THE GRANTOR'S PROPERTY LINES. BASIS OF BEARINGS IS A G.P.S. OBSERVATION. CONTAINS 0.786 ACRES MORE OR LESS.

BEGINNING OF PIPELINE ON MARK THACKER LANDS IN SECTION 15 BEARS N22°01'09"W 2844.90' FROM THE SOUTHEAST CORNER OF SECTION 15, T2S, R3W, U.S.B.&M.

END OF PIPELINE ON MARK THACKER LANDS IN SECTION 15 BEARS N01°23'26"W 2329.71' FROM THE SOUTHEAST CORNER OF SECTION 15, T2S, R3W, U.S.B.&M.

LINE TABLE

LINE	DIRECTION	LENGTH
L22	S03°10'55"W	37.40'
L23	N88°12'09"E	243.34'
L24	S89°52'26"E	243.40'
L25	S87°58'04"E	129.03'
L26	S72°41'22"E	99.46'
L27	S55°41'47"E	188.74'
L28	S46°38'34"E	200.39'

CERTIFICATE
THIS IS TO CERTIFY THAT THE ABOVE PLAT WAS PREPARED FROM FIELD NOTES OF ACTUAL SURVEYS MADE BY ME OR UNDER MY SUPERVISION AND THAT THE SAME ARE TRUE AND CORRECT TO THE BEST OF MY KNOWLEDGE AND BELIEF.

Brandon R. Bothome
REGISTERED LAND SURVEYOR
REGISTRATION NO. 6631032
STATE OF UTAH

SHEET 2 OF 2

AXIA ENERGY II

LAYFLAT PIPELINE RIGHT-OF-WAY ON MARK THACKER LANDS SECTION 15, T2S, R3W, U.S.B.&M. DUCHESNE COUNTY, UTAH

SURVEYED BY	C.R., J.L.	09-13-18	SCALE
DRAWN BY	J.J.	09-24-18	N/A
FILE:	64710-F2		

PIPELINE RIGHT-OF-WAY

UELS, LLC
Corporate Office * 85 South 200 East
Vernal, UT 84078 * (435) 789-1017

UINTAH
ENGINEERING & LAND SURVEYING

County Surveyor's File # 3950