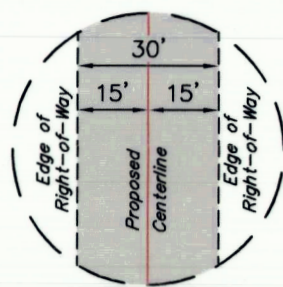


Sec. 22

1/4 Section Line

E 1/4 Cor.
Sec. 22, Alum.
Cap. #8704293



TYPICAL
RIGHT-OF-WAY
DETAIL
NO SCALE

1/16 Section Line

Section Line

BEGINNING OF PROPOSED
PIPELINE RIGHT-OF-WAY
ON AXIA ENERGY II LLC
LANDS IN SECTION 22
(At 1/16 Section Line)

1/16 Section Line

SE 1/4

N00°02'28"E - 2612.70' (Meas.)

LINE TABLE		
LINE	DIRECTION	LENGTH
L70	S11°47'55"E	157.04'
L71	S05°17'54"E	693.60'
L72	S14°13'44"W	178.54'
L73	S06°30'52"E	266.07'
L74	S21°50'54"E	27.15'

AXIA ENERGY
II LLC

END OF PROPOSED
PIPELINE RIGHT-OF-WAY
ON AXIA ENERGY II LLC
LANDS IN SECTION 22
(At Section Line)

SW Cor. Sec. 22,
2003 Alum. Cap.
in Monument Box

N89°45'42"W - 5285.71' (Meas.)

Section Line

SE Cor. Sec.
22, Alum. Cap



LENGTH TABLE

PROPERTY OWNER	FEET	RODS	ACRES
AXIA ENERGY II LLC	1322.40	80.15	0.911

CERTIFICATE

THIS IS TO CERTIFY THAT THE ABOVE PLAT WAS PREPARED FROM FIELD NOTES OF ACTUAL SURVEYS MADE BY ME OR UNDER MY SUPERVISION AND THAT THE SAME ARE TRUE AND CORRECT TO THE BEST OF MY KNOWLEDGE AND BELIEF.



SHEET 1 OF 2

AXIA ENERGY II

LAYFLAT PIPELINE RIGHT-OF-WAY ON
AXIA ENERGY II LLC LANDS
SECTION 22, T2S, R3W, U.S.B.&M.
DUCHESE COUNTY, UTAH

SURVEYED BY	C.R., J.L.	09-13-18	SCALE
DRAWN BY	J.J.	09-24-18	1" = 300'
FILE:	64710-11		

PIPELINE RIGHT-OF-WAY



UELS, LLC
Corporate Office * 85 South 200 East
Vernal, UT 84078 * (435) 789-1017



PIPELINE RIGHT-OF-WAY DESCRIPTION

A 30' WIDE RIGHT-OF-WAY 15' ON EACH SIDE OF THE FOLLOWING DESCRIBED CENTERLINE.

BEGINNING AT A POINT ON THE NORTH LINE OF THE NE 1/4 SE 1/4 OF SECTION 22, T2S, R3W, U.S.B.&M., WHICH BEARS S06°52'49"W 1314.93' FROM THE EAST 1/4 CORNER OF SAID SECTION 22, THENCE S11°47'55"E 157.04'; THENCE S05°17'54"E 693.60'; THENCE S14°13'44"W 178.54'; THENCE S06°30'52"E 266.07'; THENCE S21°50'54"E 27.15' TO A POINT ON THE SOUTH LINE OF THE SE 1/4 SE 1/4 OF SAID SECTION 22, WHICH BEARS N89°45'42"W 63.08' FROM THE SOUTHEAST CORNER OF SAID SECTION 22. THE SIDE LINES OF SAID DESCRIBED RIGHT-OF-WAY BEING SHORTENED OR ELONGATED TO MEET THE GRANTOR'S PROPERTY LINES. BASIS OF BEARINGS IS A G.P.S. OBSERVATION. CONTAINS 0.911 ACRES MORE OR LESS.

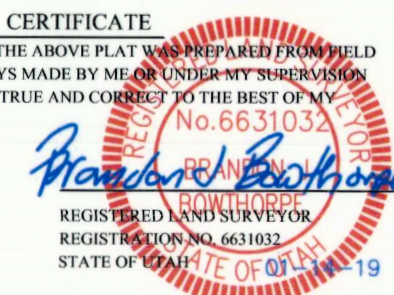
BEGINNING OF PIPELINE ON AXIA ENERGY II LLC LANDS IN SECTION 22 BEARS S06°52'49"W 1314.93' FROM THE EAST 1/4 CORNER OF SECTION 22, T2S, R3W, U.S.B.&M.

END OF PIPELINE ON AXIA ENERGY II LLC LANDS IN SECTION 22 BEARS N89°45'42"W 63.08' FROM THE SOUTHEAST CORNER OF SECTION 22, T2S, R3W, U.S.B.&M.

LINE TABLE		
LINE	DIRECTION	LENGTH
L70	S11°47'55"E	157.04'
L71	S05°17'54"E	693.60'
L72	S14°13'44"W	178.54'
L73	S06°30'52"E	266.07'
L74	S21°50'54"E	27.15'

CERTIFICATE

THIS IS TO CERTIFY THAT THE ABOVE PLAT WAS PREPARED FROM FIELD NOTES OF ACTUAL SURVEYS MADE BY ME OR UNDER MY SUPERVISION AND THAT THE SAME ARE TRUE AND CORRECT TO THE BEST OF MY KNOWLEDGE AND BELIEF.



SHEET 2 OF 2

AXIA ENERGY II

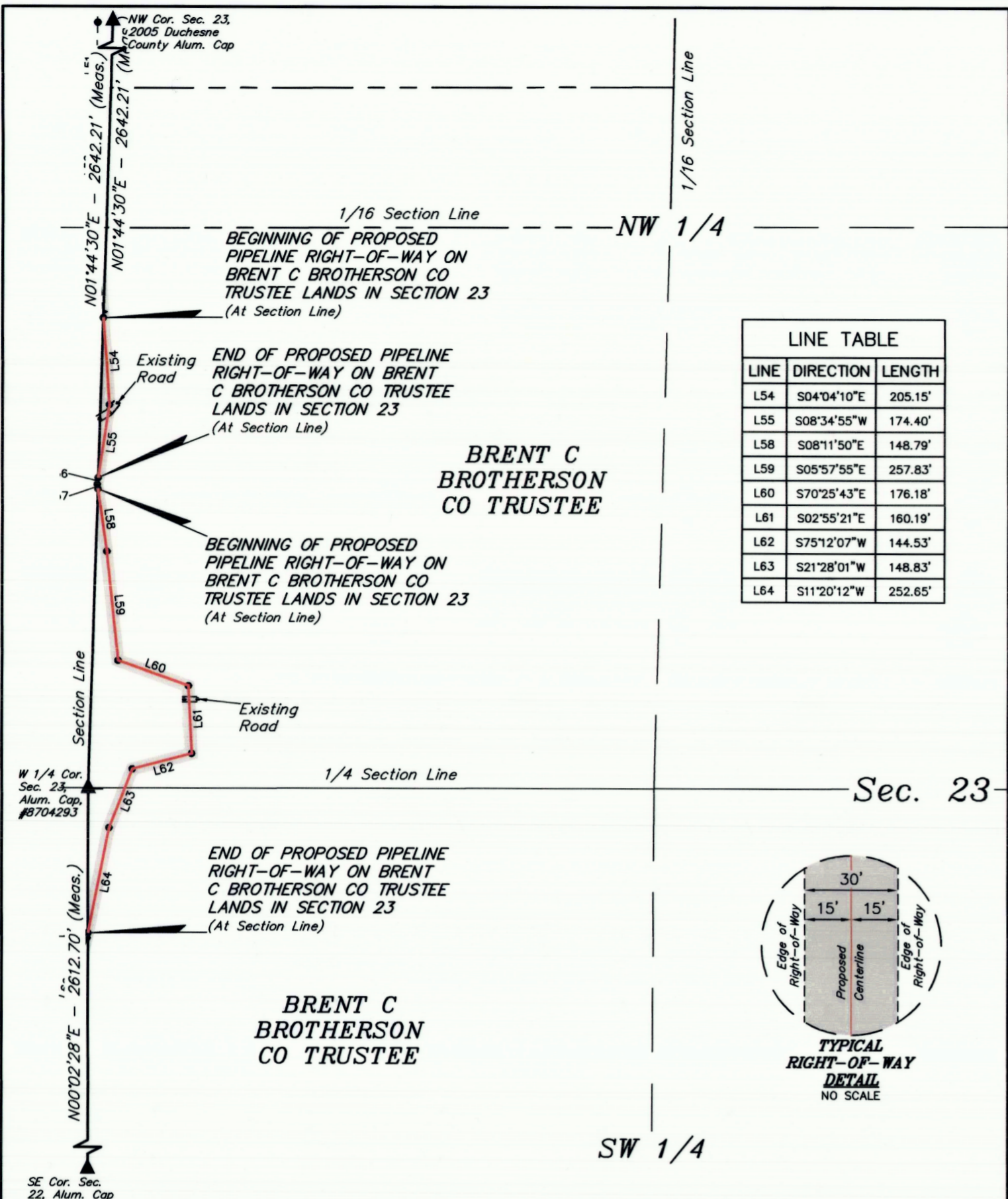
LAYFLAT PIPELINE RIGHT-OF-WAY ON
AXIA ENERGY II LLC LANDS
SECTION 22, T2S, R3W, U.S.B.&M.
DUCHESE COUNTY, UTAH

SURVEYED BY	C.R., J.L.	09-13-18	SCALE
DRAWN BY	J.J.	09-24-18	N/A
FILE:	64710-12		

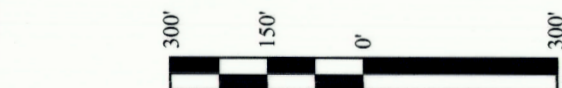
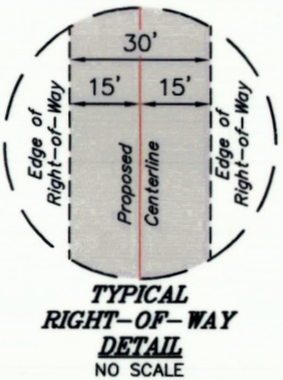
PIPELINE RIGHT-OF-WAY



UELS, LLC
Corporate Office * 85 South 200 East
Vernal, UT 84078 * (435) 789-1017



LINE TABLE		
LINE	DIRECTION	LENGTH
L54	S04°04'10\"E	205.15'
L55	S08°34'55\"W	174.40'
L58	S08°11'50\"E	148.79'
L59	S05°57'55\"E	257.83'
L60	S70°25'43\"E	176.18'
L61	S02°55'21\"E	160.19'
L62	S75°12'07\"W	144.53'
L63	S21°28'01\"W	148.83'
L64	S11°20'12\"W	252.65'



LENGTH TABLE			
PROPERTY OWNER	FEET	RODS	ACRES
BRENT C BROTHERSON CO TRUSTEE	1668.55	101.12	1.118

CERTIFICATE
 THIS IS TO CERTIFY THAT THE ABOVE PLAT WAS PREPARED FROM FIELD NOTES OF ACTUAL SURVEYS MADE BY ME OR UNDER MY SUPERVISION AND THAT THE SAME ARE TRUE AND CORRECT TO THE BEST OF MY KNOWLEDGE AND BELIEF.

Brandon Brotherson
 REGISTERED LAND SURVEYOR
 REGISTRATION NO. 6631032
 STATE OF UTAH 11-19

SHEET 1 OF 2

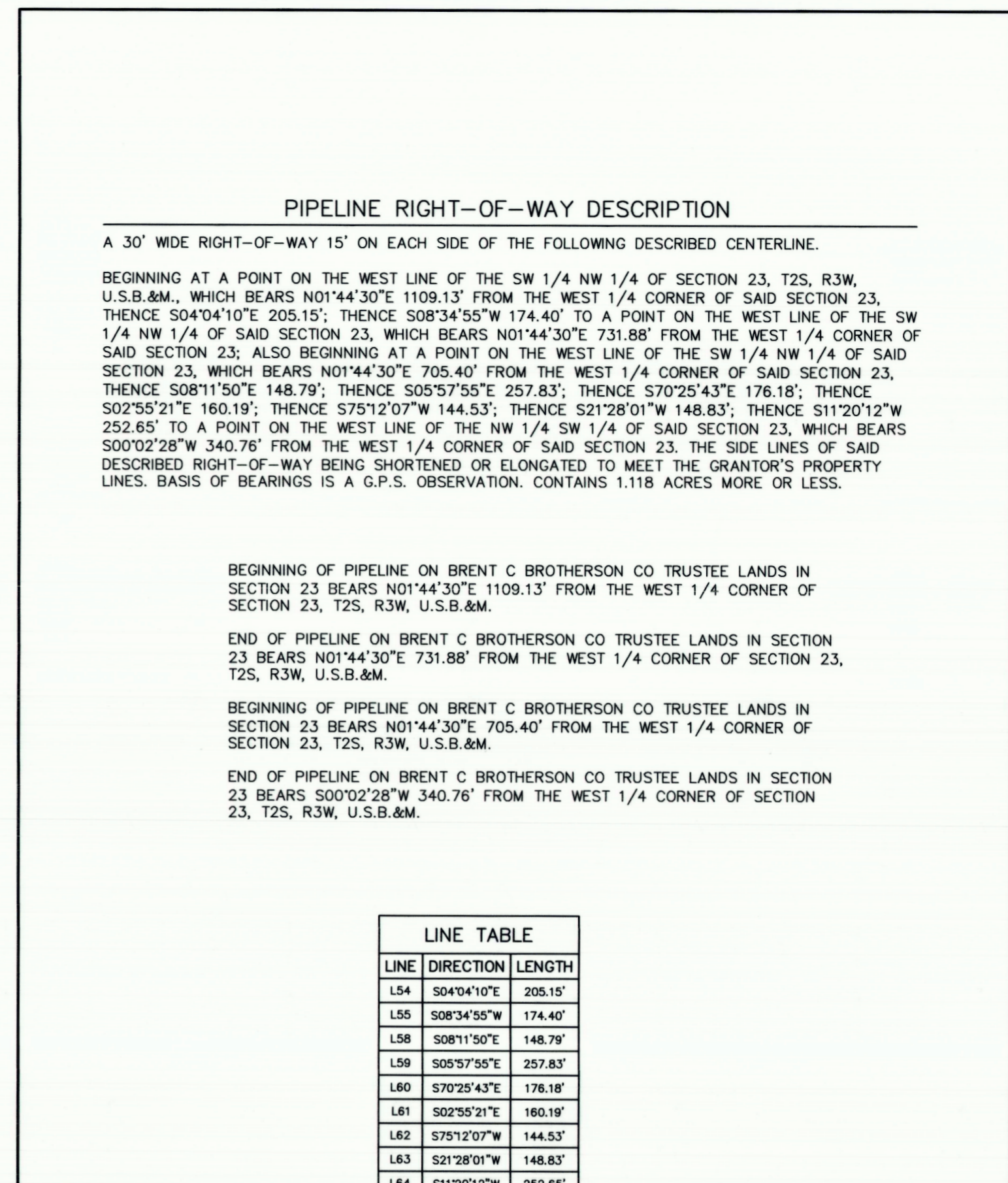
AXIA ENERGY II

LAYFLAT PIPELINE RIGHT-OF-WAY ON BRENT C BROTHERSON CO TRUSTEE LANDS SECTION 23, T2S, R3W, U.S.B.&M. DUCHESNE COUNTY, UTAH

SURVEYED BY	C.R., J.L.	09-13-18	SCALE
DRAWN BY	J.J.	09-24-18	1" = 300'
FILE:	64710-J1		

PIPELINE RIGHT-OF-WAY

UELTS, LLC
 Corporate Office * 85 South 200 East
 Vernal, UT 84078 * (435) 789-1017



LINE TABLE		
LINE	DIRECTION	LENGTH
L54	S04°04'10\"E	205.15'
L55	S08°34'55\"W	174.40'
L58	S08°11'50\"E	148.79'
L59	S05°57'55\"E	257.83'
L60	S70°25'43\"E	176.18'
L61	S02°55'21\"E	160.19'
L62	S75°12'07\"W	144.53'
L63	S21°28'01\"W	148.83'
L64	S11°20'12\"W	252.65'

CERTIFICATE
 THIS IS TO CERTIFY THAT THE ABOVE PLAT WAS PREPARED FROM FIELD NOTES OF ACTUAL SURVEYS MADE BY ME OR UNDER MY SUPERVISION AND THAT THE SAME ARE TRUE AND CORRECT TO THE BEST OF MY KNOWLEDGE AND BELIEF.

Brandon Brotherson
 REGISTERED LAND SURVEYOR
 REGISTRATION NO. 6631032
 STATE OF UTAH 11-19

SHEET 2 OF 2

AXIA ENERGY II

LAYFLAT PIPELINE RIGHT-OF-WAY ON BRENT C BROTHERSON CO TRUSTEE LANDS SECTION 23, T2S, R3W, U.S.B.&M. DUCHESNE COUNTY, UTAH

SURVEYED BY	C.R., J.L.	09-13-18	SCALE
DRAWN BY	J.J.	09-24-18	N/A
FILE:	64710-J2		

PIPELINE RIGHT-OF-WAY

UELTS, LLC
 Corporate Office * 85 South 200 East
 Vernal, UT 84078 * (435) 789-1017

County Surveyor's File # 3949