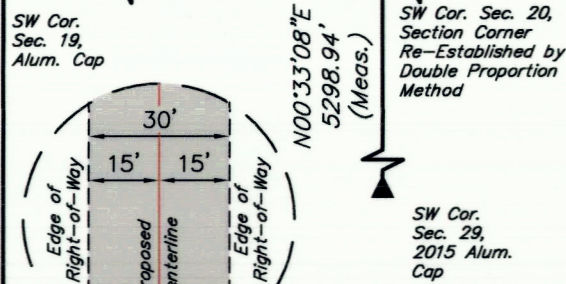


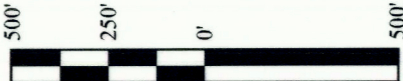
LINE TABLE		
LINE	DIRECTION	LENGTH
L1	S04°33'50"E	25.39'

**SURFACE USE AREA**  
 BUTCHER BUTTE #20-4D-23 PAD,  
 BUTCHER BUTTE #20-94EWH-23  
 #20-104EWH-23, #20-114EWH-23,  
 #28-41EWH-23, #21-121EWH-23,  
 #29-44EWH-23, #20-124EWH-23,  
 #28-31EWH-23, #21-131EWH-23,  
 #29-34EWH-23 & #20-134EWH-23  
 Contains 8.028 Acres

LINE TABLE			LINE TABLE		
LINE	DIRECTION	LENGTH	LINE	DIRECTION	LENGTH
L2	S03°45'58"E	62.34'	L8	N29°53'07"E	267.93'
L3	S32°11'15"W	119.53'	L9	S59°34'59"E	65.90'
L4	S32°09'36"W	37.01'	L10	N32°32'38"E	202.50'
L5	S58°32'22"E	217.22'	L11	N31°36'28"E	137.95'
L6	S31°48'47"W	637.46'	L12	N63°34'52"E	31.69'
L7	N58°19'02"W	581.47'	L13	S58°19'24"E	288.62'



TYPICAL RIGHT-OF-WAY DETAIL  
NO SCALE



ACREAGE / LENGTH TABLE			
SURFACE USE AREA OWNERSHIP		ACRES	
MYRIN RANCH INC		8.028	
ACCESS ROAD OWNERSHIP	FEET	RODS	ACRES
MYRIN RANCH	181.87	11.02	0.125

CERTIFICATE  
 THIS IS TO CERTIFY THAT THE ABOVE PLAT WAS PREPARED FROM FIELD NOTES OF ACTUAL SURVEYS MADE BY ME OR UNDER MY SUPERVISION AND THAT THE SAME ARE TRUE AND CORRECT TO THE BEST OF MY KNOWLEDGE AND BELIEF.



AXIA ENERGY II

BUTCHER BUTTE #20-4D-23 PAD  
 BUTCHER BUTTE #20-94EWH-23 #20-104EWH-23, #20-114EWH-23,  
 #28-41EWH-23, #21-121EWH-23, #29-44EWH-23, #20-124EWH-23,  
 #28-31EWH-23, #21-131EWH-23, #29-34EWH-23 & #20-134EWH-23  
 ACCESS ROAD RIGHT-OF-WAY ON MYRIN LIVESTOCK CO. LLC LANDS  
 SECTION 20, T2S, R3W, U.S.B.&M.  
 DUCHESNE COUNTY, UTAH

SURVEYED BY	C.R., B.H.	11-29-18	SCALE
DRAWN BY	R.T.	12-12-18	1" = 500'
FILE:	65195-B1		

ROAD RIGHT-OF-WAY

UELTS, LLC  
 Corporate Office \* 85 South 200 East  
 Vernal, UT 84078 \* (435) 789-1017



ROAD RIGHT-OF-WAY DESCRIPTION

A 30' WIDE RIGHT-OF-WAY 15' ON EACH SIDE OF THE FOLLOWING DESCRIBED CENTERLINE.

BEGINNING AT A POINT ON THE NORTH LINE OF THE SE 1/4 SE 1/4 OF SECTION 20, T2S, R3W, U.S.B.&M., WHICH BEARS N27°01'50"W 1484.46' FROM THE SOUTHEAST CORNER OF SAID SECTION 20, THENCE S03°45'58"E 62.34', THENCE S32°11'15"W 119.53' TO A POINT IN THE SE 1/4 SE 1/4 OF SAID SECTION 20, WHICH BEARS N32°21'19"W 1371.93' FROM THE SOUTHEAST CORNER OF SAID SECTION 20. THE SIDE LINES OF SAID DESCRIBED RIGHT-OF-WAY BEING SHORTENED OR ELONGATED TO MEET THE GRANTOR'S PROPERTY LINES. BASIS OF BEARINGS IS A G.P.S. OBSERVATION. CONTAINS 0.125 ACRES MORE OR LESS.

BEGINNING OF ROAD BEARS N27°01'50"W 1484.46 FROM THE SOUTHEAST CORNER OF SECTION 20, T2S, R3W, U.S.B.&M.

END OF ROAD BEARS N32°21'19"W 1371.93' FROM THE SOUTHEAST CORNER OF SECTION 20, T2S, R3W, U.S.B.&M.

SURFACE USE AREA DESCRIPTION

BEGINNING AT A POINT IN THE SE 1/4 SE 1/4 OF SECTION 20, T2S, R3W, U.S.B.&M., WHICH BEARS N32°21'19"W 1371.93' FROM THE SOUTHEAST CORNER OF SAID SECTION 20, THENCE S58°32'22"E 217.22'; THENCE S31°48'47"W 637.46'; THENCE N58°19'02"W 581.47'; THENCE N29°53'07"E 267.93'; THENCE S59°34'59"E 65.90'; THENCE N32°32'38"E 202.50'; THENCE N31°36'28"E 137.95'; THENCE N63°34'52"E 31.69'; THENCE S58°19'24"E 288.62' TO THE POINT OF BEGINNING. BASIS OF BEARINGS IS A G.P.S. OBSERVATION. CONTAINS 8.028 ACRES MORE OR LESS.

LINE TABLE			LINE TABLE		
LINE	DIRECTION	LENGTH	LINE	DIRECTION	LENGTH
L2	S03°45'58"E	62.34'	L8	N29°53'07"E	267.93'
L3	S32°11'15"W	119.53'	L9	S59°34'59"E	65.90'
L4	S32°09'36"W	37.01'	L10	N32°32'38"E	202.50'
L5	S58°32'22"E	217.22'	L11	N31°36'28"E	137.95'
L6	S31°48'47"W	637.46'	L12	N63°34'52"E	31.69'
L7	N58°19'02"W	581.47'	L13	S58°19'24"E	288.62'

ACREAGE / LENGTH TABLE			
SURFACE USE AREA OWNERSHIP		ACRES	
MYRIN RANCH INC		8.028	
ACCESS ROAD OWNERSHIP	FEET	RODS	ACRES
MYRIN RANCH	181.87	11.02	0.125

CERTIFICATE  
 THIS IS TO CERTIFY THAT THE ABOVE PLAT WAS PREPARED FROM FIELD NOTES OF ACTUAL SURVEYS MADE BY ME OR UNDER MY SUPERVISION AND THAT THE SAME ARE TRUE AND CORRECT TO THE BEST OF MY KNOWLEDGE AND BELIEF.



AXIA ENERGY II

BUTCHER BUTTE #20-4D-23 PAD  
 BUTCHER BUTTE #20-94EWH-23 #20-104EWH-23, #20-114EWH-23,  
 #28-41EWH-23, #21-121EWH-23, #29-44EWH-23, #20-124EWH-23,  
 #28-31EWH-23, #21-131EWH-23, #29-34EWH-23 & #20-134EWH-23  
 ACCESS ROAD RIGHT-OF-WAY ON MYRIN LIVESTOCK CO. LLC LANDS  
 SECTION 20, T2S, R3W, U.S.B.&M.  
 DUCHESNE COUNTY, UTAH

SURVEYED BY	C.R., B.H.	11-29-18	SCALE
DRAWN BY	R.T.	12-12-18	N/A
FILE:	65195-B2		

ROAD RIGHT-OF-WAY



UELTS, LLC  
 Corporate Office \* 85 South 200 East  
 Vernal, UT 84078 \* (435) 789-1017