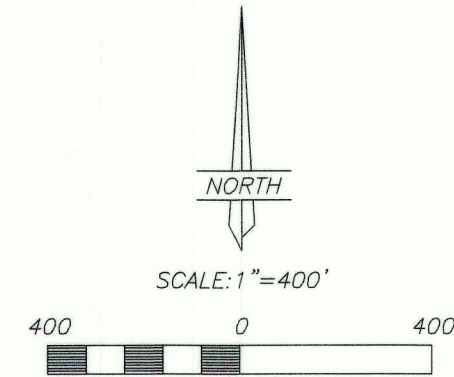


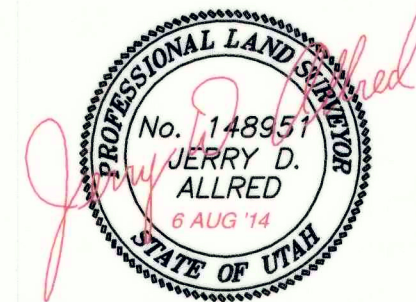
PIPELINE "AS-BUILT" SURVEY FOR
EP ENERGY E&P COMPANY, LP.
HANSON 2-9B3
 SECTION 9, T2S, R3W, U.S.B.&M.
 DUCHESNE COUNTY, UTAH

LINE	BEARING	DISTANCE
L1	N 17°22'48" E	2.64'
L2	S 70°15'24" E	1.16'
L3	S 18°13'43" W	59.31'
L4	N 69°33'50" W	161.72'
L5	N 14°04'34" E	79.44'
L6	N 11°47'53" E	71.61'
L7	N 67°29'27" W	96.93'
L8	N 65°41'08" W	111.47'
L9	N 65°16'22" W	219.56'
L10	N 66°06'13" W	108.82'
L11	N 55°32'23" W	52.78'
L12	N 49°02'37" W	124.34'
L13	N 46°06'36" W	196.30'
L14	N 47°25'22" W	59.81'
L15	N 42°16'57" W	57.36'
L16	N 40°11'25" W	81.46'
L17	N 36°31'19" W	88.16'
L18	N 24°06'54" W	99.19'
L19	N 21°23'47" W	68.16'
L20	N 14°03'54" W	81.19'
L21	N 08°27'27" W	92.02'
L22	N 03°44'36" W	164.61'
L23	N 08°12'10" W	154.47'
L24	S 86°30'56" W	8.39'
L25	N 01°31'07" W	8.30'
L26	N 87°30'39" E	8.47'
L27	N 04°02'26" W	62.32'
L28	N 01°33'51" W	97.89'
L29	S 82°13'59" E	7.38'



SURVEYOR'S CERTIFICATE

This is to certify that this plat was prepared from the field notes and electronic data collector files of an actual survey made by me, or under my personal supervision, of the pipeline shown hereon, and that this plat accurately represents said survey to the best of my knowledge.

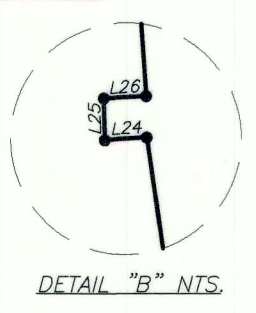
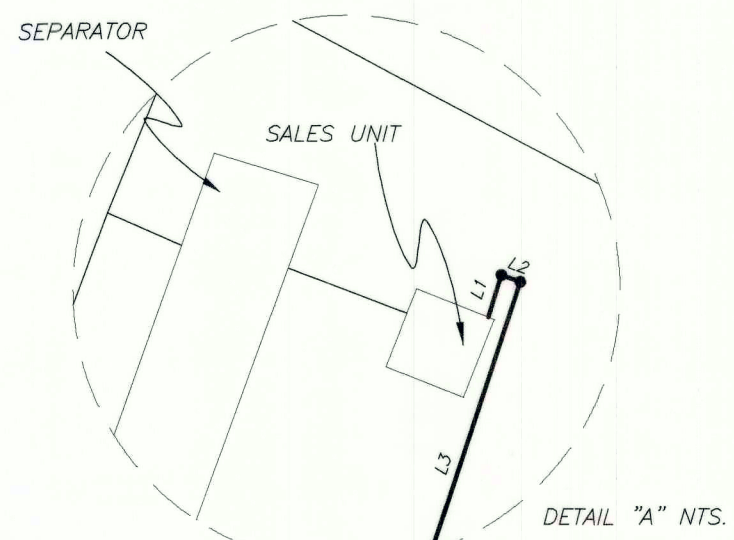
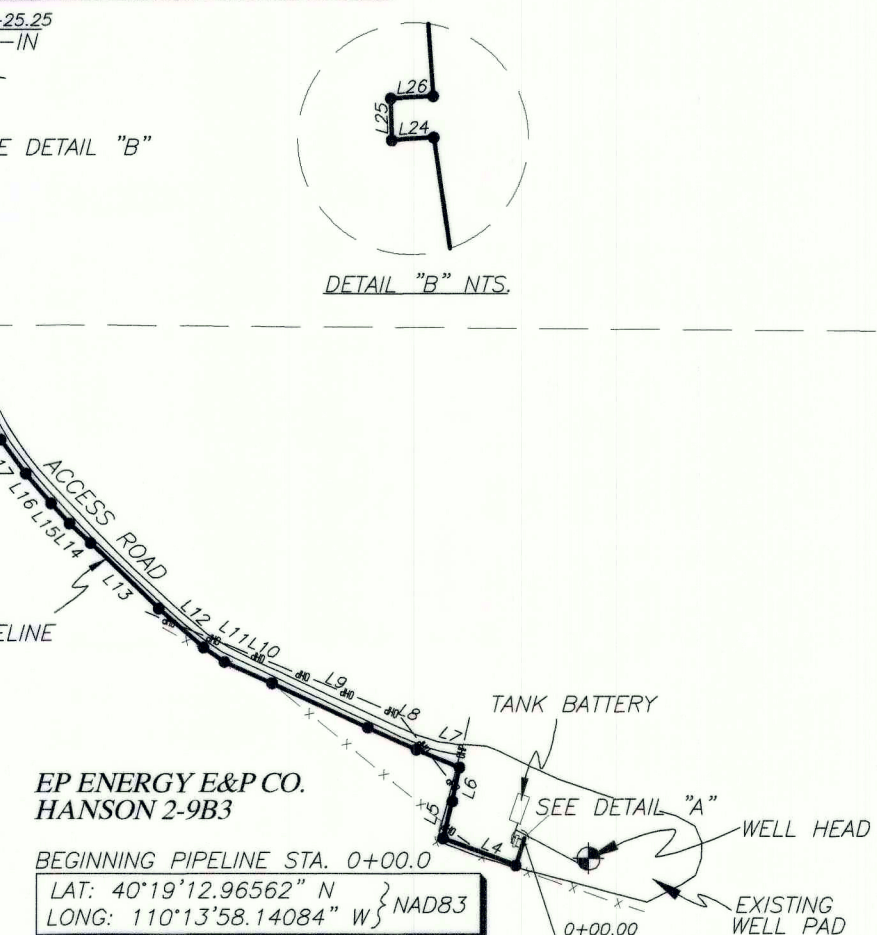


JERRY D. ALLRED, REGISTERED LAND SURVEYOR,
 CERTIFICATE NO. 148951 (UTAH)

THIS SURVEY WAS PERFORMED USING GLOBAL POSITIONING SYSTEM PROCEDURES AND EQUIPMENT
 THE BASIS OF BEARINGS IS GEODETIC NORTH DERIVED FROM G.P.S. OBSERVATIONS AT THE SECTION CORNER LOCATED AT LAT. 40°23'18.20359"N AND LONG. 110°10'15.86470"W USING THE UTAH STATE G.P.S. VIRTUAL REFERENCE STATION CONTROL NETWORK MAINTAINED AND OPERATED BY THE AUTOMATED GEOGRAPHIC REFERENCE CENTER

ENDING PIPELINE STA. 24+25.25
 LAT: 40°19'29.15665" N } NAD83
 LONG: 110°14'13.93017" W }

BEGINNING PIPELINE STA. 0+00.0
 LAT: 40°19'12.96562" N } NAD83
 LONG: 110°13'58.14084" W }



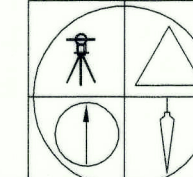
SEC 8 SEC 9
 SEC 17 SEC 16
 FOUND COUNTY MONUMENT AT SECTION CORNER

S 89°33'18" E 2636.64'

FOUND COUNTY MONUMENT AT QUARTER CORNER

N 00°21'22" E 2618.86'
 S 00°17'43" W 1318.46'
 N 00°09'04" E 2632.26'
 S 00°10'42" W 2628.74'
 TO SECTION CORNER

COUNTY SURVEYOR'S FILE NUMBER 3165



JERRY D. ALLRED AND ASSOCIATES
 SURVEYING CONSULTANTS

1235 NORTH 700 EAST--P.O. BOX 975
 DUCHESNE, UTAH 84021
 (435) 738-5352

6 AUG 2014

01-128-539