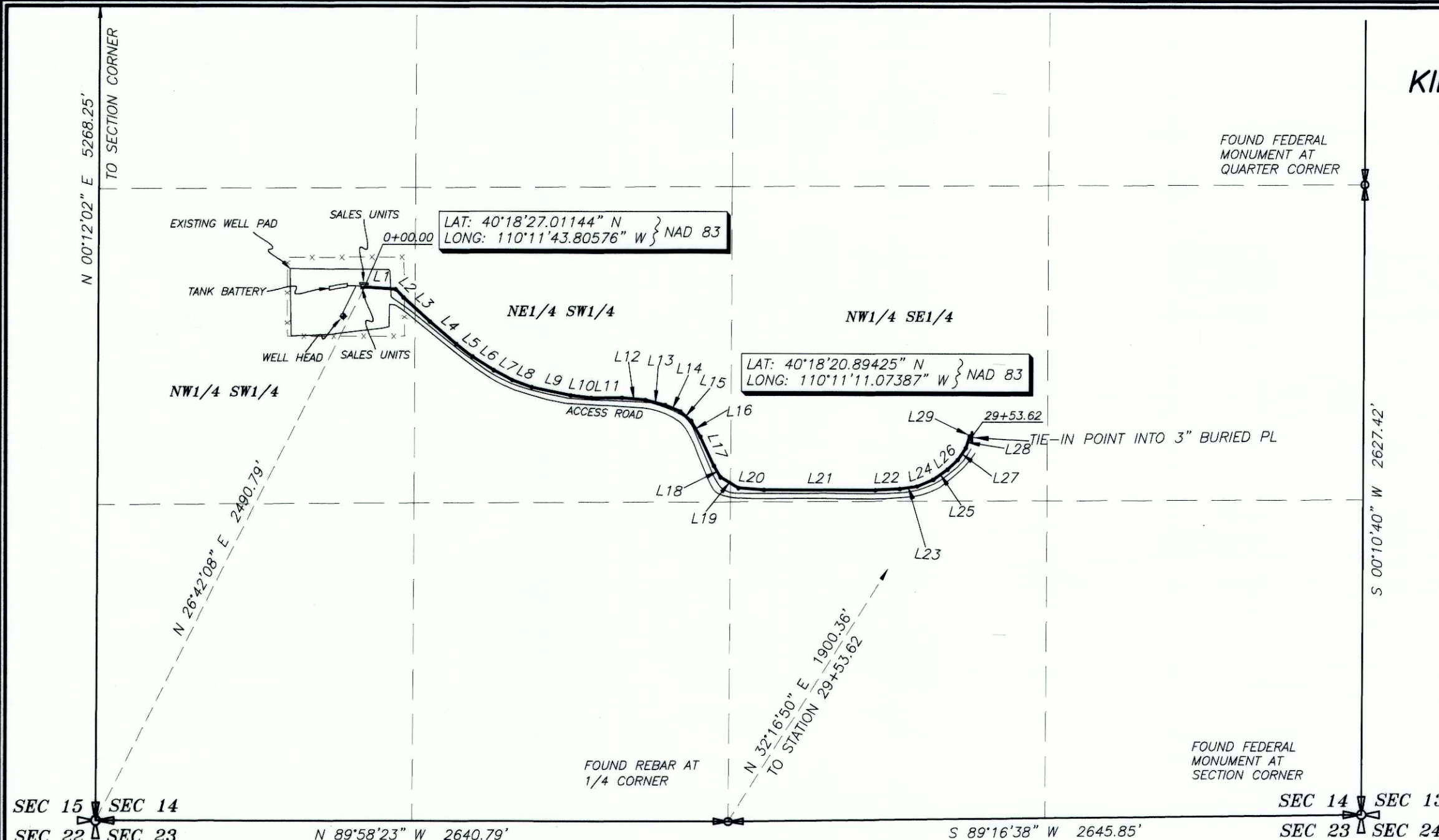


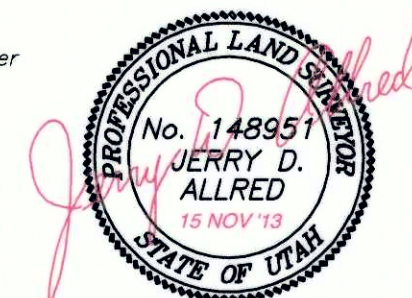
PIPELINE AS-BUILT SURVEY FOR  
**KINDER MORGAN ALTAMONT, LLC.**  
**POTTS 3-14B3**  
 SECTION 14, T2S, R3W, U.S.B.&M.  
 DUCHESNE COUNTY, UTAH

LINE	BEARING	DISTANCE
L1	S 86°12'12" E	129.13'
L2	S 44°01'52" E	48.01'
L3	S 47°48'44" E	148.57'
L4	S 49°50'47" E	145.13'
L5	S 52°26'54" E	84.60'
L6	S 57°17'27" E	106.52'
L7	S 61°53'49" E	87.59'
L8	S 70°36'35" E	86.80'
L9	S 77°59'26" E	165.47'
L10	S 83°38'09" E	85.29'
L11	S 89°57'28" E	129.95'
L12	S 84°35'40" E	97.85'
L13	S 75°53'19" E	84.59'
L14	S 66°38'18" E	68.81'
L15	S 49°19'52" E	59.78'
L16	S 30°12'10" E	76.13'
L17	S 25°01'57" E	134.32'
L18	S 30°18'34" E	54.75'
L19	S 59°00'05" E	87.42'
L20	S 85°41'43" E	106.81'
L21	S 89°59'22" E	465.81'
L22	N 87°15'08" E	103.23'
L23	N 81°12'47" E	71.53'
L24	N 67°28'37" E	73.03'
L25	N 54°27'02" E	73.67'
L26	N 46°42'36" E	58.96'
L27	N 34°04'34" E	59.42'
L28	N 17°53'39" E	50.52'
L29	S 86°39'50" E	9.93'



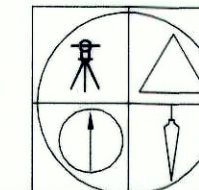
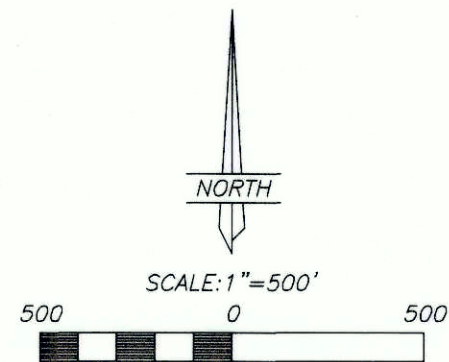
**SURVEYOR'S CERTIFICATE**

This is to certify that this plat was prepared from the field notes and electronic data collector files of an actual survey made by me, or under my personal supervision, of the pipeline shown hereon, and that this plat accurately represents said survey to the best of my knowledge.



Jerry D. Allred, Professional Land Surveyor,  
 Certificate 148951 (Utah)

THIS SURVEY WAS PERFORMED USING GLOBAL POSITIONING SYSTEM PROCEDURES AND EQUIPMENT  
 THE BASIS OF BEARINGS IS GEODETIC NORTH DERIVED FROM G.P.S. OBSERVATIONS AT A 1/4 CORNER LOCATED AT LAT. 40°23'18.20359"N AND LONG. 110°10'15.86470"W USING THE UTAH STATE G.P.S. VIRTUAL REFERENCE STATION CONTROL NETWORK MAINTAINED AND OPERATED BY THE AUTOMATED GEOGRAPHIC REFERENCE CENTER



**JERRY D. ALLRED AND ASSOCIATES**  
 SURVEYING CONSULTANTS

1235 NORTH 700 EAST--P.O. BOX 975  
 DUCHESNE, UTAH 84021  
 (435) 738-5352