

RECORD OF SURVEY FOR A PLAT AMENDMENT FOR
STEPHANIE MEACHAM
 LOTS 129, 130, 131, AND 132, GOLF COURSE SUBDIVISION
 ROOSEVELT CITY, UTAH
 SECTION 16, TOWNSHIP 2 SOUTH, RANGE 1 WEST
 UTAH SPECIAL BASE AND MERIDIAN

SURVEYOR'S CERTIFICATE

THIS IS TO CERTIFY THAT THIS PLAT WAS PREPARED FROM THE FIELD NOTES AND ELECTRONIC DATA COLLECTOR FILES OF AN ACTUAL SURVEY MADE BY ME, OR UNDER MY PERSONAL SUPERVISION OF THE SUBDIVISION SHOWN HEREON, SAID SURVEY BEING BASED UPON DATA SHOWN ON THE ORIGINAL SUBDIVISION PLAT OF THE GOLF COURSE SUBDIVISION RECORDED IN THE DUCHESNE COUNTY RECORDER'S OFFICE, AND THAT THIS PLAT WAS PREPARED IN ORDER TO AMEND, CHANGE, AND COMBINE LOTS 129, 130, 131, AND 132 INTO TWO LOTS TO BE KNOWN AS LOTS 131A AND 132A, THE CONFIGURATION OF WHICH IS SHOWN ON THIS PLAT, AND THAT THIS PLAT REPRESENTS A DEPENDENT REPLATING OF THE ORIGINAL SUBDIVISION PLAT.



Jerry D. Allred, Professional Land Surveyor,
 Certificate No. 148951 (Utah)

OWNER'S DEDICATION

WE, THE UNDERSIGNED, OWNERS OF LOTS 129, 130, 131, AND 132, OF THE GOLF COURSE SUBDIVISION, DO HEREBY AMEND, CHANGE, AND COMBINE THE LOTS INDICATED INTO THE CONFIGURATION SHOWN ON THIS PLAT, THE RESULTANT TWO LOTS TO BE KNOWN HEREAFTER AS LOTS 131A AND 132A, AND DO HEREBY DEDICATE TO THE PERPETUAL USE OF THE PUBLIC ALL PARCELS OF LAND DESCRIBED AS ROADS AND EASEMENTS.

ACKNOWLEDGMENT

STATE OF UTAH }
 COUNTY OF DUCHESNE } SS
 ON THE _____ DAY OF _____, 20____, PERSONALLY APPEARED BEFORE ME THE SIGNERS OF THE ABOVE DEDICATION WHO DULY ACKNOWLEDGED TO ME THAT THEY DID EXECUTE SAME.
 MY COMMISSION EXPIRES _____

NOTARY PUBLIC

CITY PLANNING COMMISSION APPROVAL

APPROVED THIS _____ DAY OF _____, 20____, BY THE ROOSEVELT CITY PLANNING COMMISSION.

CHAIRPERSON

CITY COUNCIL APPROVAL AND ACCEPTANCE

APPROVED AND ACCEPTED THIS _____ DAY OF _____, 20____, BY THE ROOSEVELT CITY COUNCIL.

CLERK

MAYOR

COUNTY RECORDER'S CERTIFICATE

STATE OF UTAH }
 COUNTY OF DUCHESNE } SS
 THIS IS TO CERTIFY THAT THIS PLAT WAS FILED FOR RECORD IN THE COUNTY RECORDER'S OFFICE ON THE _____ DAY OF _____, 20____, AT _____ O'CLOCK _____ M., AND IS DULY RECORDED.
 FILING NO. _____
 COUNTY RECORDER

FOUND BRASS DISK IN BOX AT SECTION CORNER-ROOSEVELT CITY GRID MONUMENT

SEC 16 SEC 15

SEC 21 SEC 22

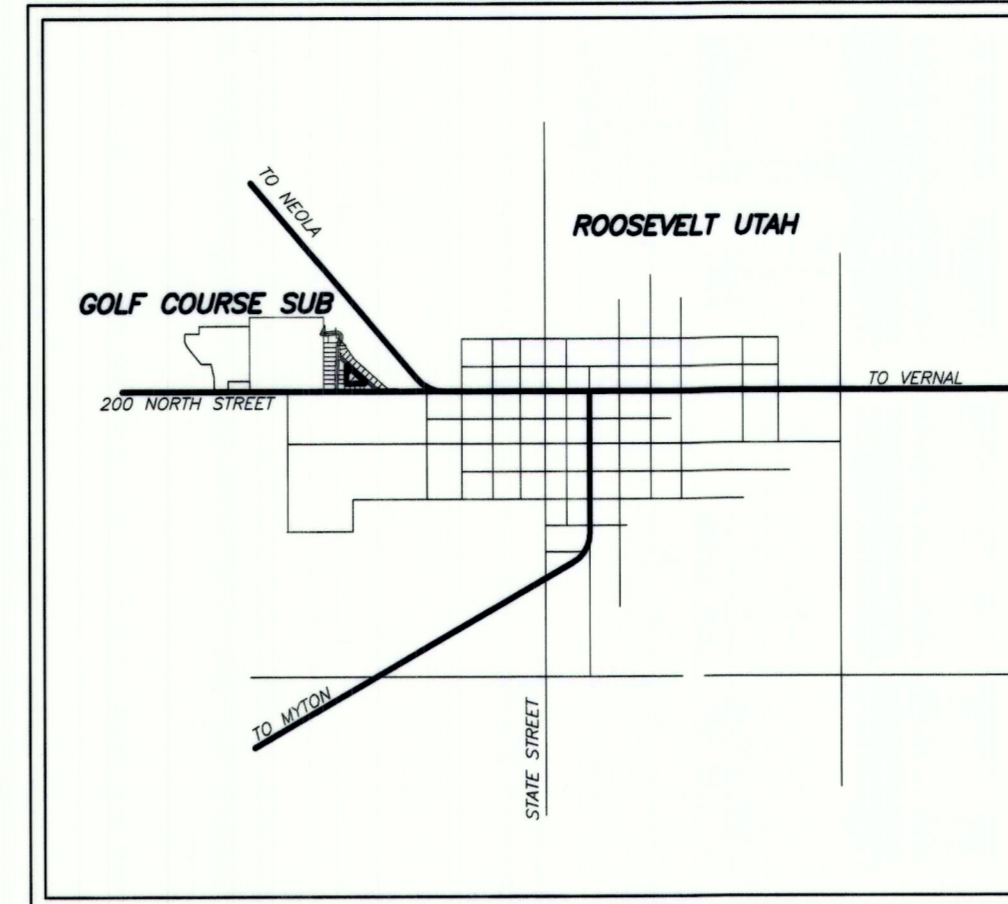
COUNTY SURVEYOR FILE NO. 3790

JERRY D. ALLRED & ASSOCIATES, INC.
 SURVEYING CONSULTANTS

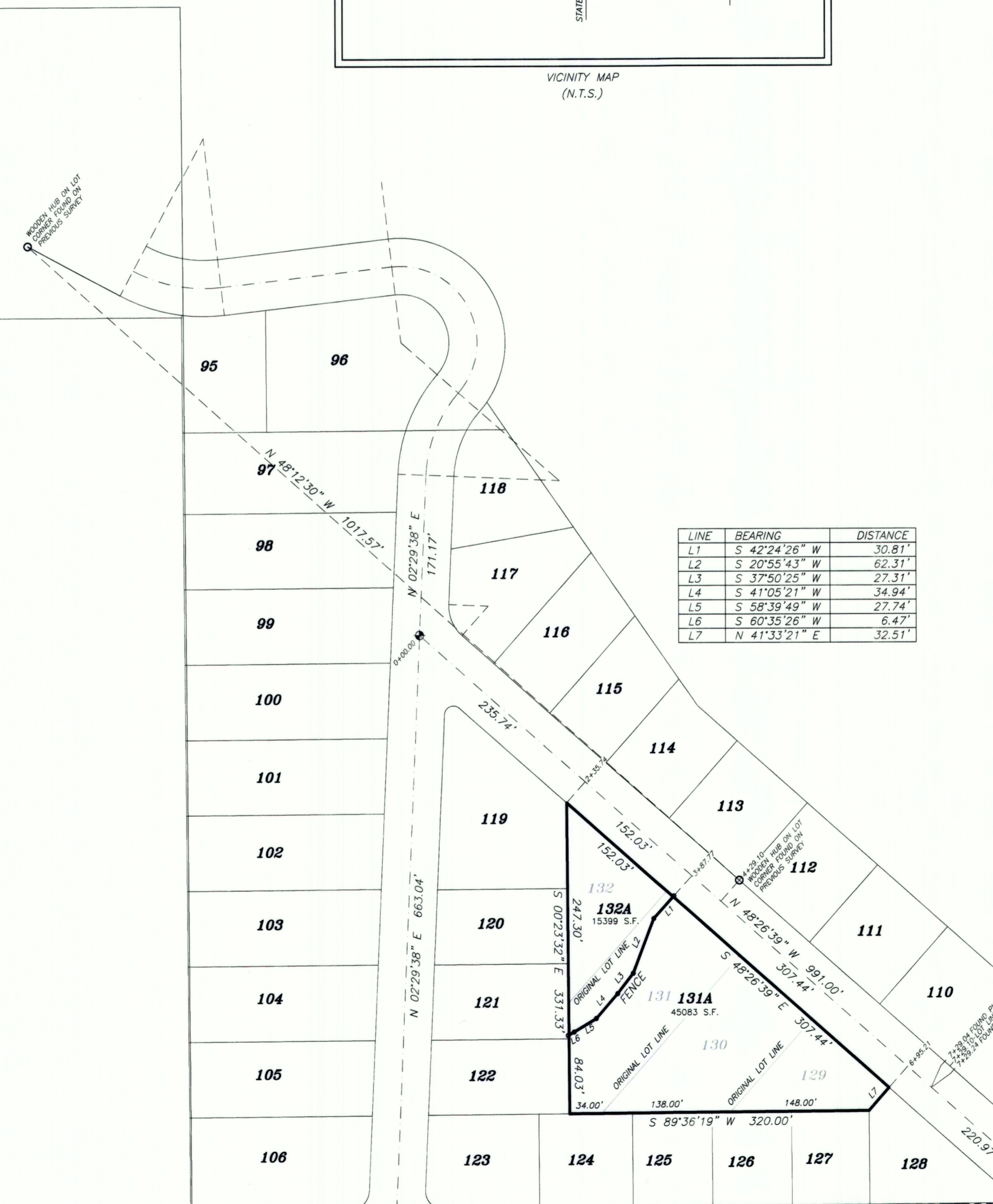
1235 NORTH 700 EAST--P.O. BOX 975
 DUCHESNE, UTAH 84021
 (435) 738-5352

20 JUL 2018

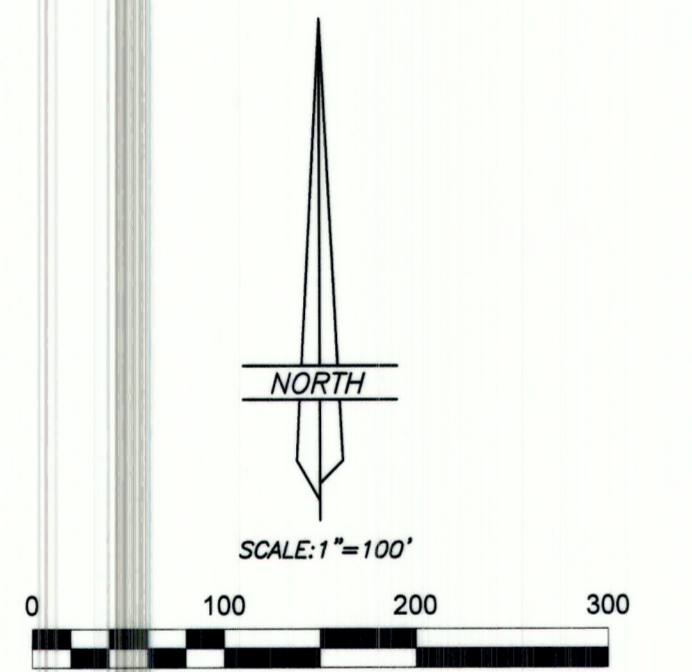
18-100-002



VICINITY MAP
 (N.T.S.)



LINE	BEARING	DISTANCE
L1	S 42°24'26" W	30.81'
L2	S 20°55'43" W	62.31'
L3	S 37°50'25" W	27.31'
L4	S 41°05'21" W	34.94'
L5	S 58°39'49" W	27.74'
L6	S 60°35'26" W	6.42'
L7	N 41°33'21" E	32.51'



LEGEND AND NOTES

- ⊕ SECTION CORNER
- ⊕ QUARTER CORNER
- ⊕ CENTERLINE MONUMENTS AS NOTED
- ⊕ EXISTING FENCE CORNER DEFINING AMENDED LOT LINE

THIS SURVEY WAS PERFORMED BY USING G.P.S. (GLOBAL POSITIONING SYSTEM) EQUIPMENT AND PROCEDURES.

THE BASIS OF BEARINGS IS BASED ON WGS-84 GEODETIC NORTH AT THE CORNER COMMON TO SECTIONS 15, 16, 21, AND 22, TOWNSHIP 2 SOUTH, RANGE 1 WEST OF THE UTAH SPECIAL BASE AND MERIDIAN AS DETERMINED BY THE UTAH STATE GPS VIRTUAL REFERENCE STATION CONTROL NETWORK MAINTAINED AND OPERATED BY THE AUTOMATED GEOGRAPHIC REFERENCE CENTER. THE BEARINGS ON THE ORIGINAL SUBDIVISION PLATS WERE ROTATED TO FIT THIS BASIS OF BEARINGS.

FOUND COUNTY MONUMENT AT QUARTER CORNER

FOUND DUCHESNE COUNTY MONUMENT AT SECTION CORNER

ROOSEVELT CITY GRID LINE AND CENTERLINE OF 200 NORTH STREET (AN EXTENSION OF THE LINE BETWEEN THE NORTHWEST SECTION CORNER AND NORTH QUARTER CORNER OF SECTION 22)

DRAWING NUMBER
3790

DRAWING NUMBER
3790

DRAWING NUMBER
3790

SAFETY PRODUCTS • NEW YORK, MINNESOTA
 (REGISTERED BY PAINT MANUFACTURERS)

SAFETY PRODUCTS • NEW YORK, MINNESOTA
 (REGISTERED BY PAINT MANUFACTURERS)

SAFETY PRODUCTS • NEW YORK, MINNESOTA
 (REGISTERED BY PAINT MANUFACTURERS)

SAFETY PRODUCTS • NEW YORK, MINNESOTA
 (REGISTERED BY PAINT MANUFACTURERS)