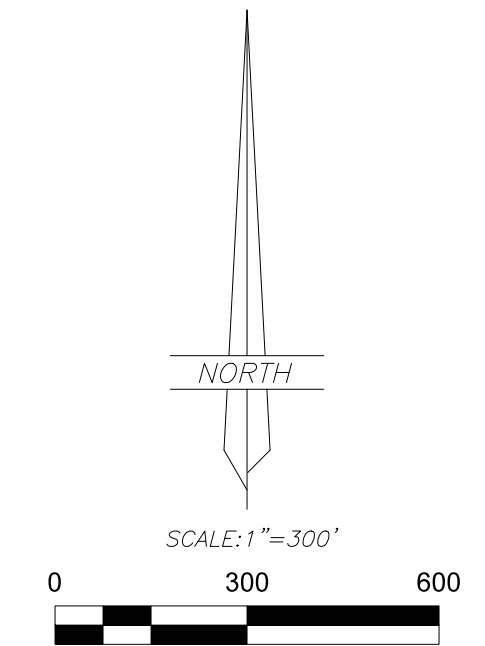


RECORD OF SURVEY FOR  
**GEORGE FRISBY**  
 OF THE  
**TERRA DEL-SOL RANCH SUBDIVISION**  
 SECTION 12, TOWNSHIP 1 SOUTH, RANGE 8 WEST  
 UTAH SPECIAL BASE AND MERIDIAN  
 DUCHESNE COUNTY, UTAH



**LEGEND**

- FOUND OR SET SECTION CORNER AS NOTED ON PLAT
- FOUND OR SET QUARTER CORNER AS NOTED ON PLAT
- ◇ FOUND OR SET 1/16 CORNER AS NOTED ON PLAT
- FOUND MONUMENT SET BY OTHERS
- SET 5/8"x24" REBAR WITH PLASTIC CAP STAMPED "ALLRED SURVEYING"
- 8" SPIKES WITH "WHISKERS" SET ON LINE
- FENCE CORNER
- X — EXISTING FENCE
- MAG SPIKE AND WASHER

**BASIS OF BEARINGS**

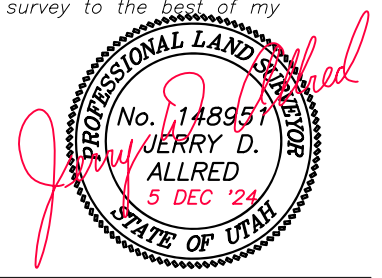
This survey was performed using G.P.S. (Global Positioning System) equipment and procedures. The basis of bearings for this survey is a bearing of North 00°14'46" East from the Southwest Corner to the West Quarter Corner of Section 12 derived from G.P.S. observations using the Utah State G.P.S. virtual reference station control network maintained and operated by the Utah Geospatial Resource center.

**NARRATIVE**

This survey was performed at the request of George Frisby for the purpose of staking points on lot lines on the edge of the road in TERRA DEL-SOL RANCH SUBDIVISION as shown on this plat. A search was made to locate the monuments marking the Public Land Survey System corners and the results are shown by each corner. The data shown on the subdivision plat was plotted and rotated and scaled to fit the basis of bearings and scale of this survey. The PLSS corners were then used to control the survey.

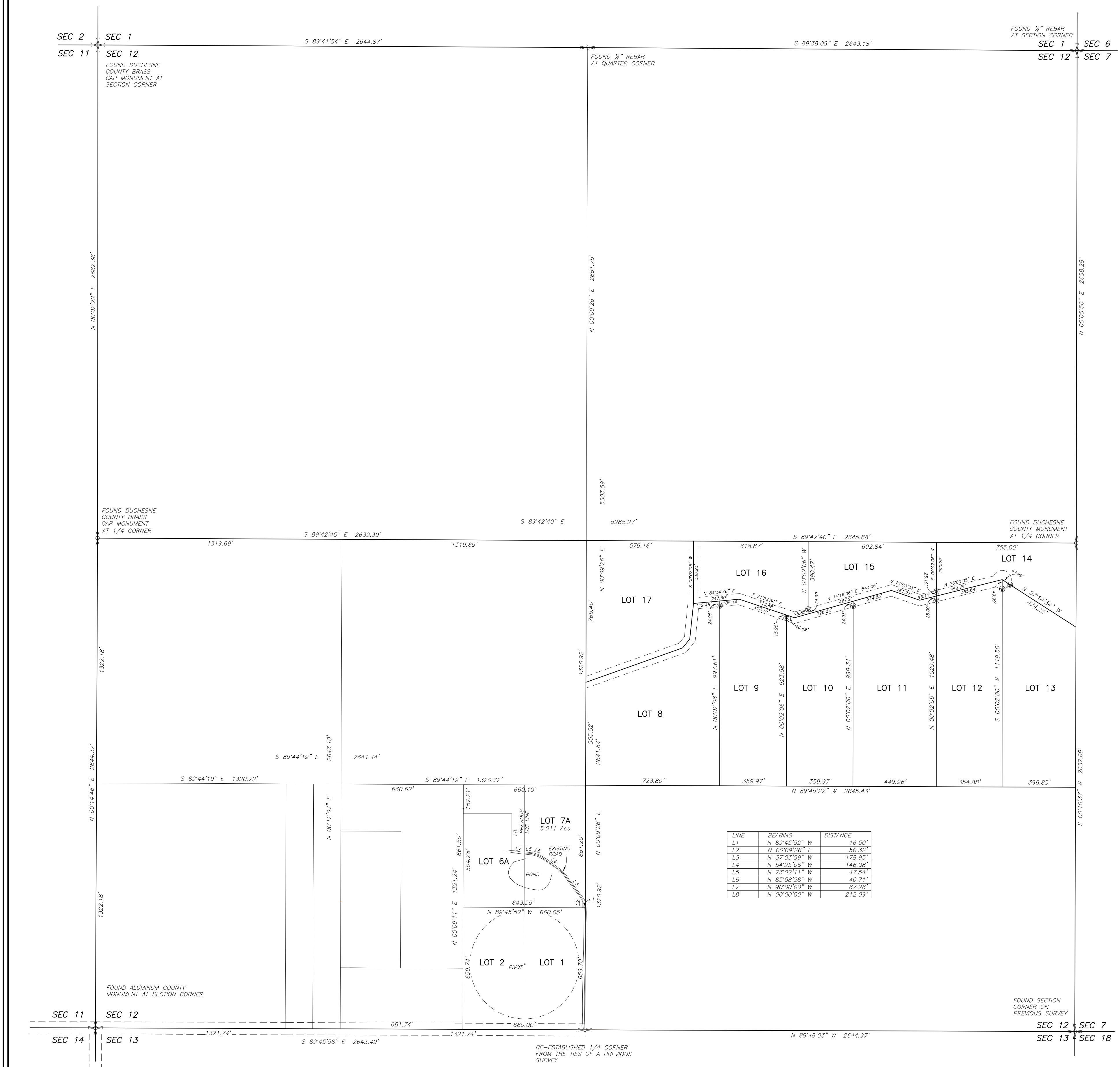
**SURVEYOR'S CERTIFICATE**

I, Jerry D. Allred, do hereby certify that I am a Professional Land Surveyor, and that I hold certificate no. 148951 as prescribed by the laws of the State of Utah. I further certify that this plat and its computations were prepared from the field notes and electronic data collector files of an actual survey made by me, or under my personal supervision, of the parcels of land shown hereon, and that the monuments indicated were found or set during said survey, and that this plat accurately represents said survey to the best of my knowledge.



JERRY D. ALLRED, PROFESSIONAL LAND SURVEYOR  
 CERTIFICATE NO. 148951 (UTAH)

LINE	BEARING	DISTANCE
L1	N 89°45'52" W	16.50'
L2	N 00°09'26" E	50.32'
L3	N 37°03'59" W	178.95'
L4	N 54°25'06" W	146.08'
L5	N 73°02'11" W	47.54'
L6	N 85°38'28" W	40.71'
L7	N 80°00'00" W	62.26'
L8	N 00°00'00" W	212.09'



COUNTY SURVEYOR FILE NO. 5877  
**JERRY D. ALLRED & ASSOCIATES, INC.**  
 SURVEYING CONSULTANTS  
 1235 NORTH 700 EAST—P.O. BOX 975  
 DUCHESNE, UTAH 84021  
 (435) 738-5352