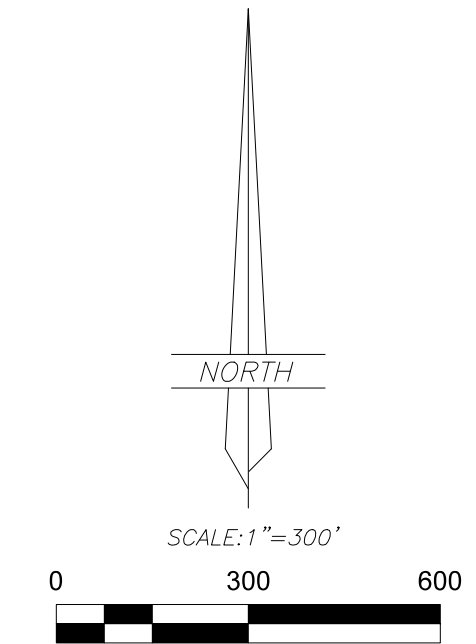


RECORD OF SURVEY FOR  
**MARTIN ANDRUS**

LOT 11, TABBY MOUNTAIN ESTATES  
SECTION 26, TOWNSHIP 1 SOUTH, RANGE 8 WEST  
UINTAH SPECIAL BASE AND MERIDIAN  
DUCHESE COUNTY, UTAH



**LEGEND**

- FOUND OR SET SECTION CORNER AS NOTED ON PLAT
- FOUND OR SET QUARTER CORNER AS NOTED ON PLAT
- ◇ FOUND OR SET 1/16 CORNER AS NOTED ON PLAT
- FOUND MONUMENT SET BY OTHERS
- SET 5/8"x24" REBAR WITH PLASTIC CAP STAMPED "ALLRED SURVEY"
- ▼ 8" SPIKES WITH "WHISKERS" SET ON LINE
- FENCE CORNER
- EXISTING FENCE
- MAG SPIKE AND WASHER

**BASIS OF BEARINGS**

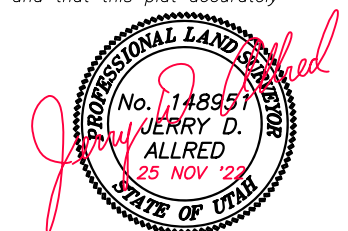
THIS SURVEY WAS PERFORMED USING G.P.S. (GLOBAL POSITIONING SYSTEM) EQUIPMENT AND PROCEDURES.  
THE BASIS OF BEARINGS FOR THIS SURVEY IS A BEARING OF SOUTH 89°52'37" WEST FROM THE SOUTHEAST CORNER TO THE SOUTHWEST CORNER OF SECTION 27, TOWNSHIP 1 SOUTH, RANGE 8 WEST OF THE UINTAH SPECIAL BASE AND MERIDIAN, DERIVED FROM G.P.S. OBSERVATIONS USING THE UTAH STATE G.P.S. VIRTUAL REFERENCE STATION CONTROL NETWORK MAINTAINED AND OPERATED BY THE UTAH GEOSPATIAL RESOURCE CENTER.

**NARRATIVE**

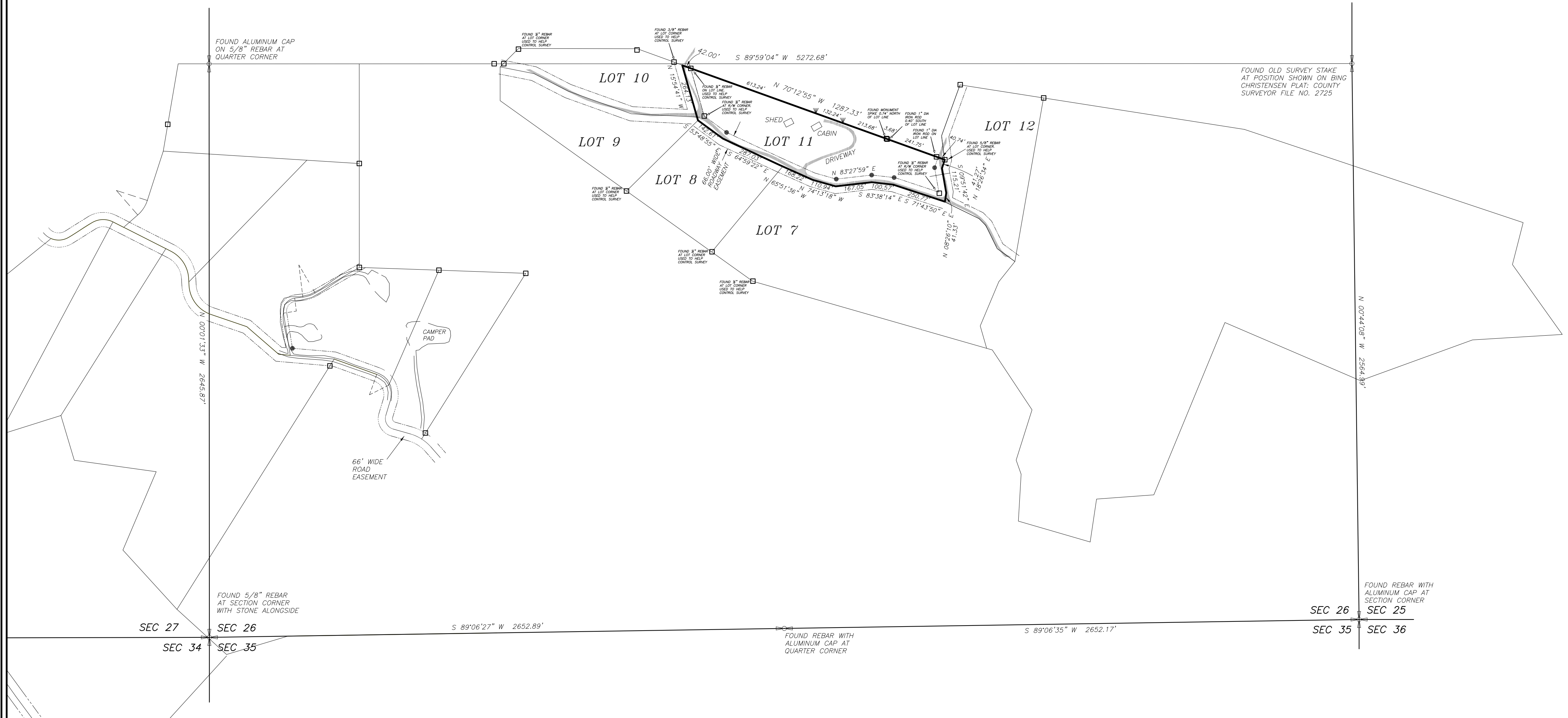
The purpose of this survey was to find and locate on the ground, the corners of Lot 11, TABBY MOUNTAIN ESTATES Subdivision as shown hereon as requested by Martin Andrus. A search was made for the monuments marking several of the corners of Lot 11 and surrounding lots. The results are noted on the plat. The positions of the found monuments were held fixed and a least-squares best-fit transformation was performed on the positions of the missing monuments as calculated from the data on the subdivision plat. The best-fit positions were then monumented as shown and described hereon.

**SURVEYOR'S CERTIFICATE**

I, Jerry D. Allred, do hereby certify that I am a Professional Land Surveyor, and that I hold certificate no. 148951 as prescribed by the laws of the State of Utah; I further certify that this plat and its computations were prepared from the field notes and electronic data collector files of an actual survey made by me, or under my personal supervision, of the parcels of land shown hereon, and that the monuments indicated were found or set during said survey, and that this plat accurately represents said survey to the best of my knowledge.



JERRY D. ALLRED, PROFESSIONAL LAND SURVEYOR  
CERTIFICATE NO. 148951 (UTAH)



COUNTY SURVEYOR FILE NO. 5338

**JERRY D. ALLRED & ASSOCIATES, INC.**  
SURVEYING CONSULTANTS

1235 NORTH 700 EAST—P.O. BOX 975  
DUCHESE, UTAH 84021  
(435) 738-5352