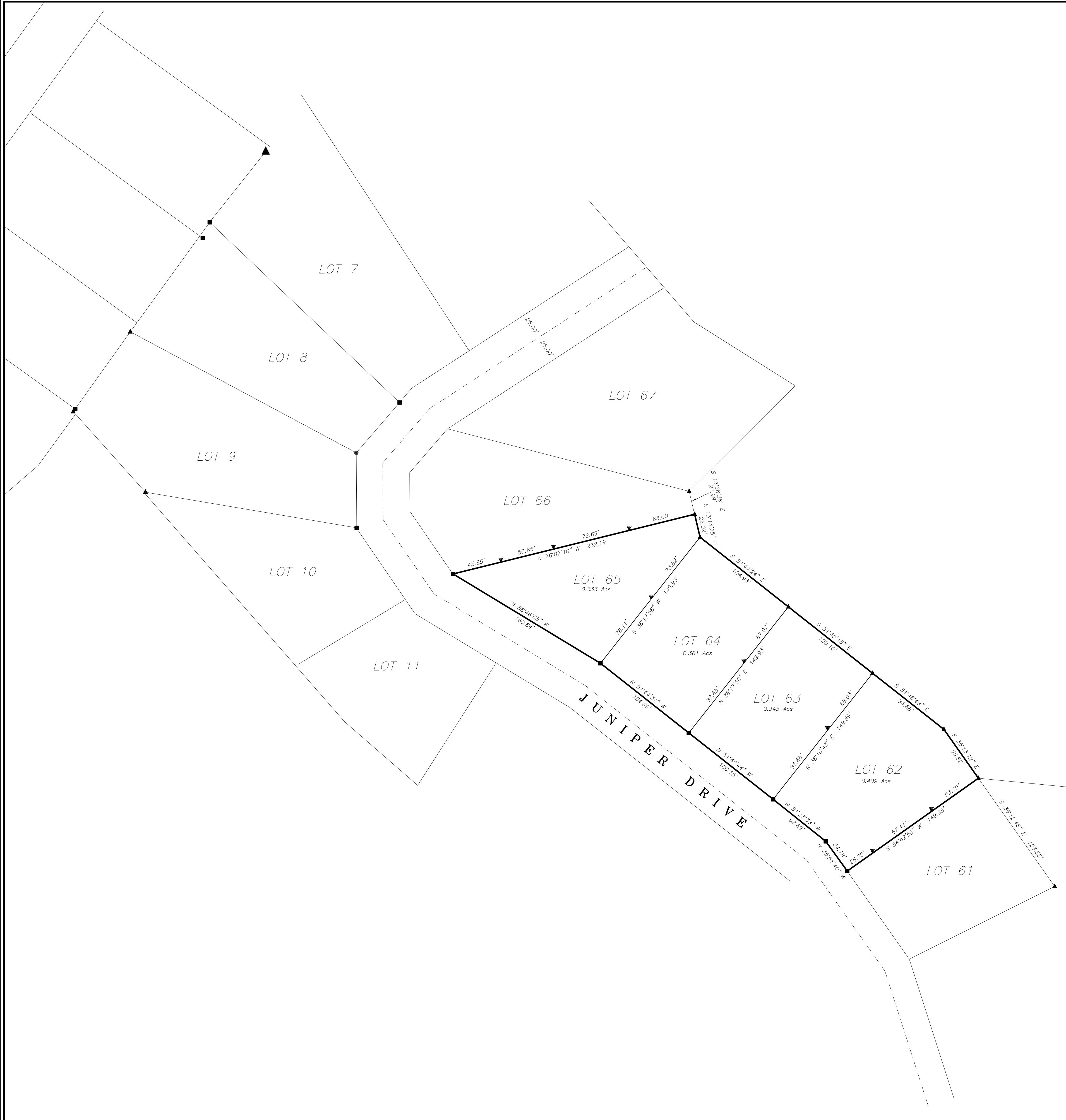
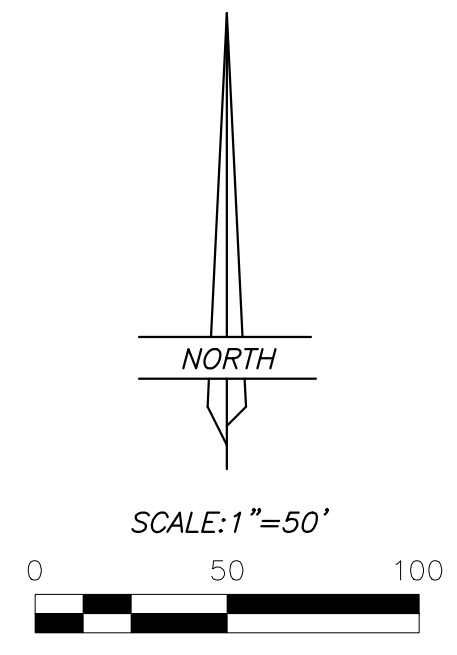


RECORD OF SURVEY FOR
BRAD EGGETT

LOTS 62, 63, 64, AND 65, PLAT 7, MOUNT TABBY SPRINGS
SECTION 36, TOWNSHIP 1 SOUTH, RANGE 8 WEST
UINTAH SPECIAL BASE AND MERIDIAN



SEC 25 SEC 30
SEC 36 SEC 31
FOUND B.L.M. BRASS CAP AT SECTION CORNER



LEGEND AND NOTES

- INDICATES 5/8" REBAR WITH GUARD STAKE FOUND AT LOT CORNERS
- 5/8"x24" REBAR WITH PLASTIC CAP STAMPED "ALLRED SURVEYING" SET BY THIS SURVEY
- ▲ FOUND 3/8" REBAR AT LOT CORNERS
- ▼ SET MONUMENT SPIKE WITH WHISKERS ON EASEMENT LINE

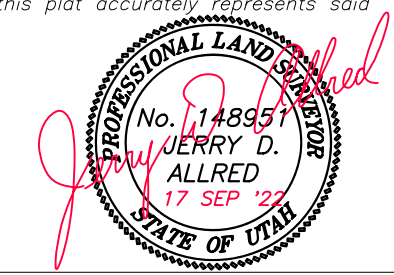
THIS SURVEY WAS PERFORMED USING GLOBAL POSITIONING SYSTEM, (G.P.S.) EQUIPMENT AND PROCEDURES. THE BEARINGS ARE BASED ON A BEARING OF N 002°31'7" E FROM THE EAST QUARTER CORNER TO THE NORTHEAST SECTION CORNER OF SECTION 36.

NARRATIVE

THIS SURVEY WAS PERFORMED AT THE REQUEST OF BRAD EGGETT FOR THE PURPOSE OF LOCATING THE CORNERS OF LOTS 62, 63, 64, AND 65, OF MOUNT TABBY SPRINGS, PLAT 7, USING A COPY OF THE ORIGINAL SUBDIVISION PLAT A SEARCH WAS MADE FOR THE CORNERS INITIALLY SET DURING THE SURVEY OF THE SUBDIVISION. ALL OF THESE CORNERS WERE FOUND AS NOTED ON THE PLAT. THE MONUMENTS MARKING THE NORTHEAST CORNER AND EAST QUARTER CORNER OF SECTION 36 WERE FOUND AS NOTED AND USED TO ESTABLISH THE BASIS OF BEARINGS.

SURVEYOR'S CERTIFICATE

I, Jerry D. Allred, do hereby certify that I am a Professional Land Surveyor, and that I hold certificate no. 148951 as prescribed by the laws of the State of Utah. I further certify that this plat and its computations were prepared from the field notes and electronic data collector files of an actual survey made by me, or under my personal supervision, of the parcels of land shown hereon, and that the monuments indicated were found or set during said survey, and that this plat accurately represents said survey to the best of my knowledge.



JERRY D. ALLRED, PROFESSIONAL LAND SURVEYOR
CERTIFICATE NO. 148951 (UTAH)

COUNTY SURVEYOR FILE NO. 5274

JERRY D. ALLRED & ASSOCIATES, INC.
SURVEYING CONSULTANTS
1235 NORTH 700 EAST—P.O. BOX 975
DUCHEMNE, UTAH 84021
(435) 738-5352