

**CHEVRON PIPE LINE COMPANY**

**PIPELINE RIGHT-OF-WAY ON UTE TRIBAL LANDS**

Located In  
**Section 14, T1S, R8W, U.S.B.&M.**  
**Duchesne County, Utah**

**PIPELINE RIGHT-OF-WAY DESCRIPTIONS**

**NE 1/4 SE 1/4 OF SECTION 14, T1S, R8W, U.S.B.&M.**

A STRIP OF LAND 33 FEET WIDE, (TRAVERSING THE NE 1/4 SE 1/4 OF SECTION 14, T1S, R8W, U.S.B.&M.) THE CENTERLINE OF SAID STRIP BEING DESCRIBED AS FOLLOWS:

BEGINNING AT A POINT ON THE EAST LINE OF THE SE 1/4 OF SECTION 14, T1S, R8W, U.S.B.&M. WHICH BEARS S00°02'33"E 1176.55' FROM THE EAST 1/4 CORNER OF SAID SECTION; THENCE N44°55'20"W 1652.83' TO A POINT ON THE NORTH LINE OF THE SAID SE 1/4 WHICH BEARS S89°41'36"W 1166.29' FROM THE SAID 1/4 CORNER. THE SIDE LINES OF SAID STRIP TO BE SHORTENED OR LENGTHENED TO TERMINATE AT THE PROPERTY BOUNDARY. BASIS OF BEARINGS IS THE EAST LINE OF THE SAID SE 1/4 WHICH IS TAKEN FROM GLOBAL POSITIONING SATELLITE OBSERVATIONS TO BEAR N00°02'33"W, A MEASURED DISTANCE OF 2641.09'. CONTAINS 1.252 ACRES MORE OR LESS.

**NW 1/4 NE 1/4 OF SECTION 14, T1S, R8W, U.S.B.&M.**

A STRIP OF LAND 33 FEET WIDE, (TRAVERSING THE NW 1/4 NE 1/4 OF SECTION 14, T1S, R8W, U.S.B.&M.) THE CENTERLINE OF SAID STRIP BEING DESCRIBED AS FOLLOWS:

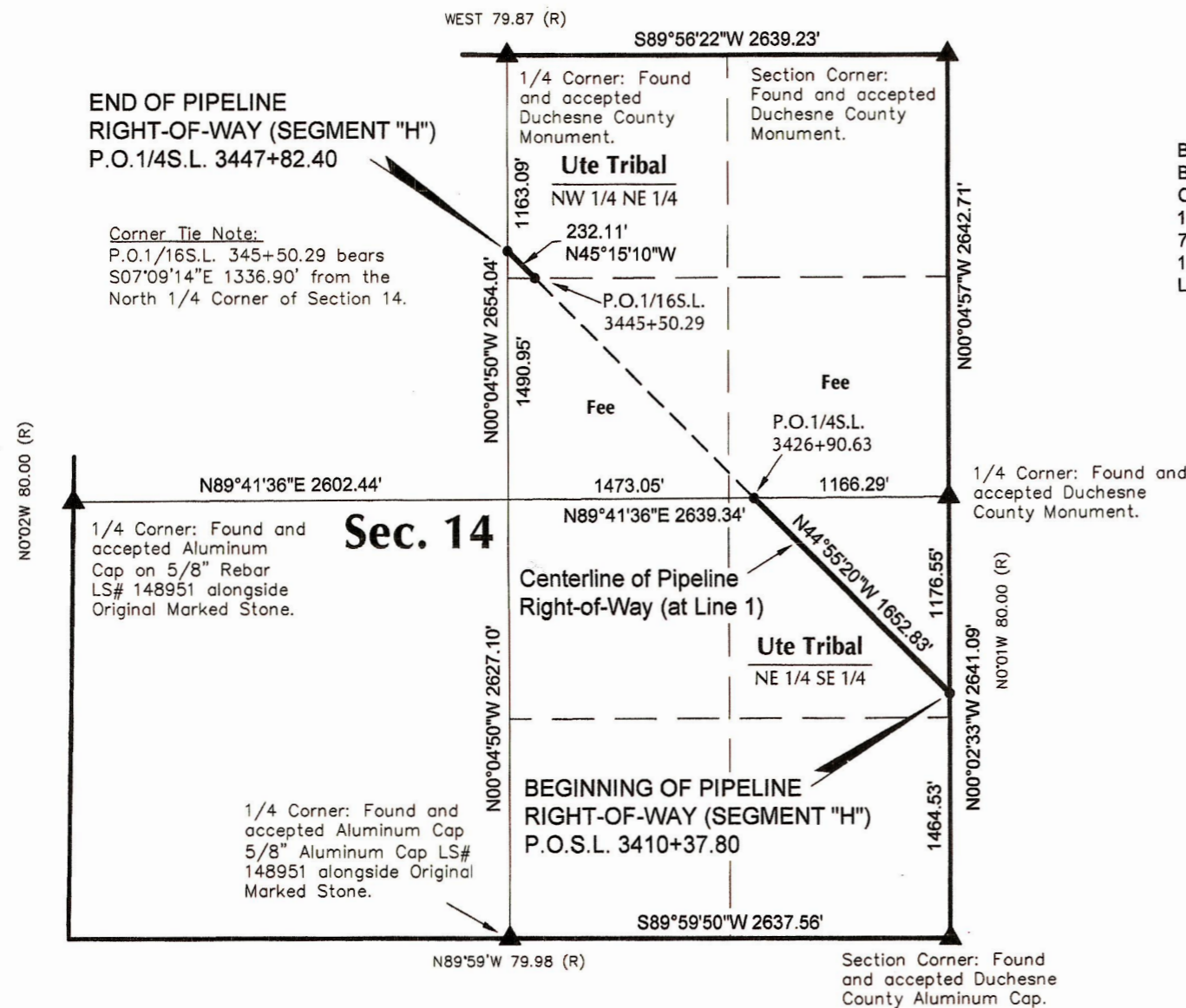
BEGINNING AT A POINT ON THE SOUTH LINE OF THE NW 1/4 NE 1/4 OF SECTION 14, T1S, R8W, U.S.B.&M. WHICH BEARS S07°09'14"E 1336.90' FROM THE NORTH 1/4 CORNER OF SAID SECTION; THENCE N45°15'10"W 232.11' TO A POINT ON THE WEST LINE OF THE SAID NW 1/4 NE 1/4 WHICH BEARS S00°04'50"E 1163.09' FROM THE SAID 1/4 CORNER. THE SIDE LINES OF SAID STRIP TO BE SHORTENED OR LENGTHENED TO TERMINATE AT THE PROPERTY BOUNDARY. BASIS OF BEARINGS IS THE NORTH LINE OF THE NE 1/4 OF SAID SECTION WHICH IS TAKEN FROM GLOBAL POSITIONING SATELLITE OBSERVATIONS TO BEAR S89°56'22"W, A MEASURED DISTANCE OF 2639.23'. CONTAINS 0.176 ACRES MORE OR LESS.

**SEGMENT H**

**SHEET**

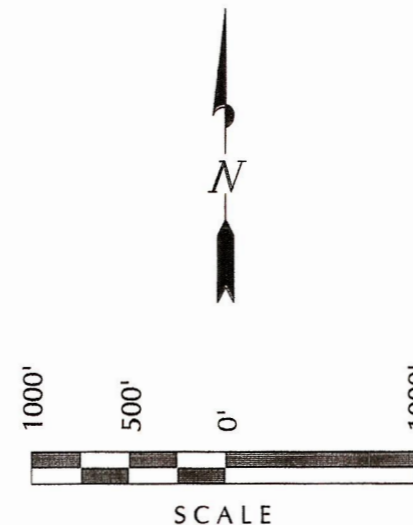
**1**

**OF 1**



**Basis of Bearing Note:**

BEARINGS AND DISTANCES SHOWN ON THIS PLAT ARE BASED UPON A LOCAL CARTESIAN GRID WHICH IS ORIENTED TO GEODETIC NORTH AT CONTROL POINT 101. THE GRID HAVING A MEAN PROJECT ELEVATION OF 7000 FEET. CONTROL POINT 101 IS LOCATED IN THE SE 1/4 OF SEC. 11, T1S, R8W, U.S.B.&M. AT 40°24'14.831"N LATITUDE AND 110°45'00.910"W LONGITUDE (NAD 83).



**CERTIFICATE**

THIS IS TO CERTIFY THAT THE ABOVE PLAT WAS PREPARED FROM FIELD NOTES OF ACTUAL SURVEYS MADE BY ME OR UNDER MY DIRECT SUPERVISION AND THAT THE SAME ARE TRUE AND CORRECT TO THE BEST OF MY KNOWLEDGE AND BELIEF

PROFESSIONAL LAND SURVEYOR  
REGISTRATION No. 148951  
STATE OF UTAH

25 Jan 10

**LEGEND**

- ▲ = SECTION CORNER LOCATED
- P.O.S.L. = POINT ON SECTION LINE
- P.O. 1/4S.L. = POINT ON 1/4 SECTION LINE
- P.O. 1/16S.L. = POINT ON 1/16 SECTION LINE
- Dimensions shown are measured unless otherwise noted.
- (R) = Record Measurement (G.L.O.)
- Shown in chains - 1 chain = 66'

 <p><b>Jerry D. Allred</b>  <b>Timberline</b> Engineering &amp; Land Surveying</p> <p>And Associates • Surveying Consultants 1235 North 700 East • P.O. Box 975 • Duchesne, Utah 84021 • (435) 738-5352</p>		<p>209 North 300 West • Vernal, Utah (435) 789-1365</p>
SURVEYED BY: D.R.A.	DATE: 01-05-10	REVISIONS:
DRAWN BY: B.J.S.	SCALE: 1" = 1000'	