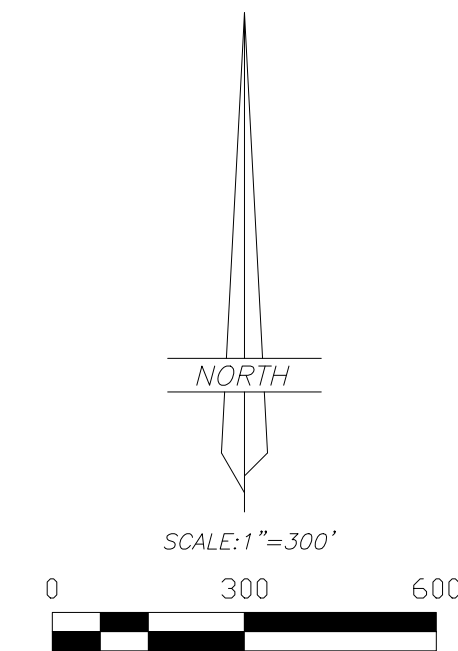


RECORD OF SURVEY
FOR
KEVIN MAXWELL
LOTS 14, 15, 16, 17, 18, & 19
FARM CREEK MINI-RANCHES
A SUBDIVISION LOCATED IN
SECTION 13, TOWNSHIP 1 SOUTH, RANGE 8 WEST
UINTAH SPECIAL BASE AND MERIDIAN



LINE	BEARING	DISTANCE
L1	N 67°37'51\"	157.74'
L2	N 47°28'45\"	171.87'
L3	N 32°21'00\"	85.96'
L4	N 32°22'59\"	114.80'
L5	N 20°02'20\"	173.95'
L6	N 72°56'57\"	121.06'
L7	N 54°40'06\"	64.58'

- LEGEND**
- FOUND OR SET SECTION CORNER AS NOTED ON PLAT
 - FOUND OR SET QUARTER CORNER AS NOTED ON PLAT
 - ◇ FOUND OR SET 1/16 CORNER AS NOTED ON PLAT
 - FOUND MONUMENT SET BY OTHERS
 - SET 5/8"x24" REBAR WITH PLASTIC CAP STAMPED "ALLRED SURVEY"
 - ▼ 8" SPIKES WITH "WHISKERS" SET ON LINE
 - FENCE CORNER
 - X — EXISTING FENCE
 - MAG SPIKE AND WASHER

NARRATIVE AND NOTES

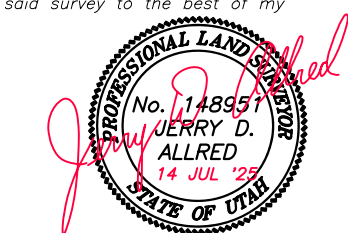
This survey was performed at the request of Kevin Maxwell for the purpose of marking the boundaries of Lots 15 through 19 of FARM CREEK MINI-RANCHES Subdivision. A search was made for the monuments marking the Public Land Survey System corners and the results are noted on the plat. These monuments were used to control the survey. The data shown on the subdivision plat was plotted and then rotated to fit the basis of bearings of this survey in order to determine the position of the lot lines. Several monuments set during previous surveys were found at various corners and used if their positions were within a few tenths of a foot.

BASIS OF BEARINGS

THIS SURVEY WAS PERFORMED BY USING G.P.S. (GLOBAL POSITIONING SYSTEM) EQUIPMENT AND PROCEDURES. THE BASIS OF BEARINGS FOR THIS SURVEY IS A BEARING OF N 0°02'20" W FROM THE SOUTHWEST SECTION CORNER TO THE WEST QUARTER CORNER OF SECTION 13 DERIVED FROM G.P.S. OBSERVATIONS USING THE UTAH STATE G.P.S. VIRTUAL REFERENCE STATION CONTROL NETWORK MAINTAINED AND OPERATED BY THE AUTOMATED GEOGRAPHIC REFERENCE CENTER.

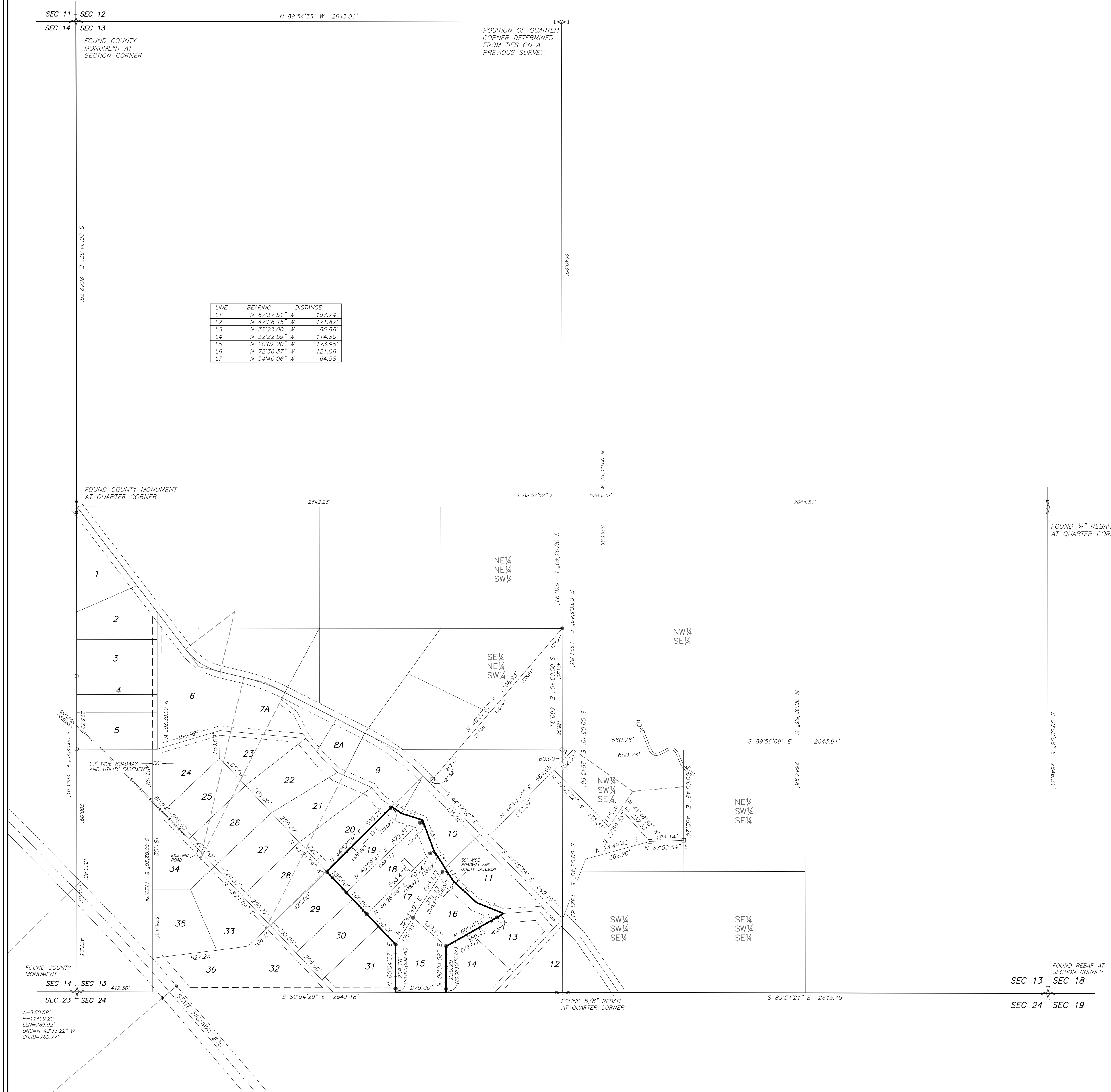
SURVEYOR'S CERTIFICATE

I, Jerry D. Allred, do hereby certify that I am a Professional Land Surveyor, and that I hold certificate no. 148951 as prescribed by the laws of the State of Utah. I further certify that this plat and its computations were prepared from the field notes and electronic data collector files of an actual survey made by me, or under my personal supervision, of the parcels of land shown hereon, and that the monuments indicated were found or set during said survey, and that this plat accurately represents said survey to the best of my knowledge.



JERRY D. ALLRED, PROFESSIONAL LAND SURVEYOR
CERTIFICATE NO. 148951 (UTAH)

COUNTY SURVEYOR FILE NO. 5952
JERRY D. ALLRED & ASSOCIATES, INC.
SURVEYING CONSULTANTS
1235 NORTH 700 EAST—P.O. BOX 975
DUCHESE, UTAH 84021
(435) 738-5352



4=750'58"
R=11459.20'
LEN=789.92'
BNG=N 42°11'22\" W
CHRD=769.77'