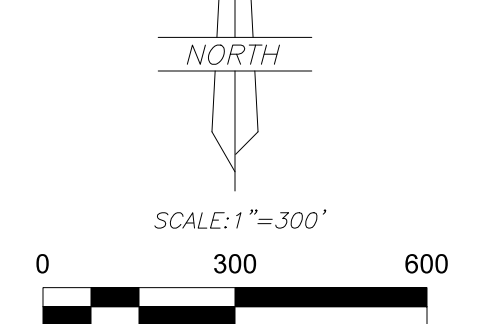


RECORD OF SURVEY FOR  
**DAN SMITH**  
 LOT 69, SUNDANCE WEST—UNIT A  
 SECTIONS 20 AND 21, TOWNSHIP 2 SOUTH, RANGE 4 WEST  
 UTAH SPECIAL BASE AND MERIDIAN  
 DUCHESNE COUNTY, UTAH



- LEGEND**
- FOUND OR SET SECTION CORNER AS NOTED ON PLAT
  - FOUND OR SET QUARTER CORNER AS NOTED ON PLAT
  - ◇ FOUND OR SET 1/16 CORNER AS NOTED ON PLAT
  - FOUND MONUMENT SET BY OTHERS
  - SET 5/8"x24" REBAR WITH PLASTIC CAP STAMPED "ALLRED SURVEYING"
  - ▼ 8" SPIKES WITH "WHISKERS" SET ON LINE
  - FENCE CORNER
  - EXISTING FENCES
  - MAG SPIKE AND WASHER
  - ▲ FOUND ORIGINAL 3/8" REBAR LOT CORNERS

**SURVEYOR'S CERTIFICATE**

I, Jerry D. Allred, do hereby certify that I am a Professional Land Surveyor, and that I hold certificate no. 148951 as prescribed by the laws of the State of Utah. I further certify that this plat and its computations were prepared from the field notes and electronic data collector files of an actual survey made by me, or under my personal supervision, of the parcels of land shown herein, and that the monuments indicated were found or set during said survey, and that this plat accurately represents said survey to the best of my knowledge.

*Jerry D. Allred*  
 No. 148951  
 JERRY D. ALLRED  
 26 JUN 25  
 STATE OF UTAH

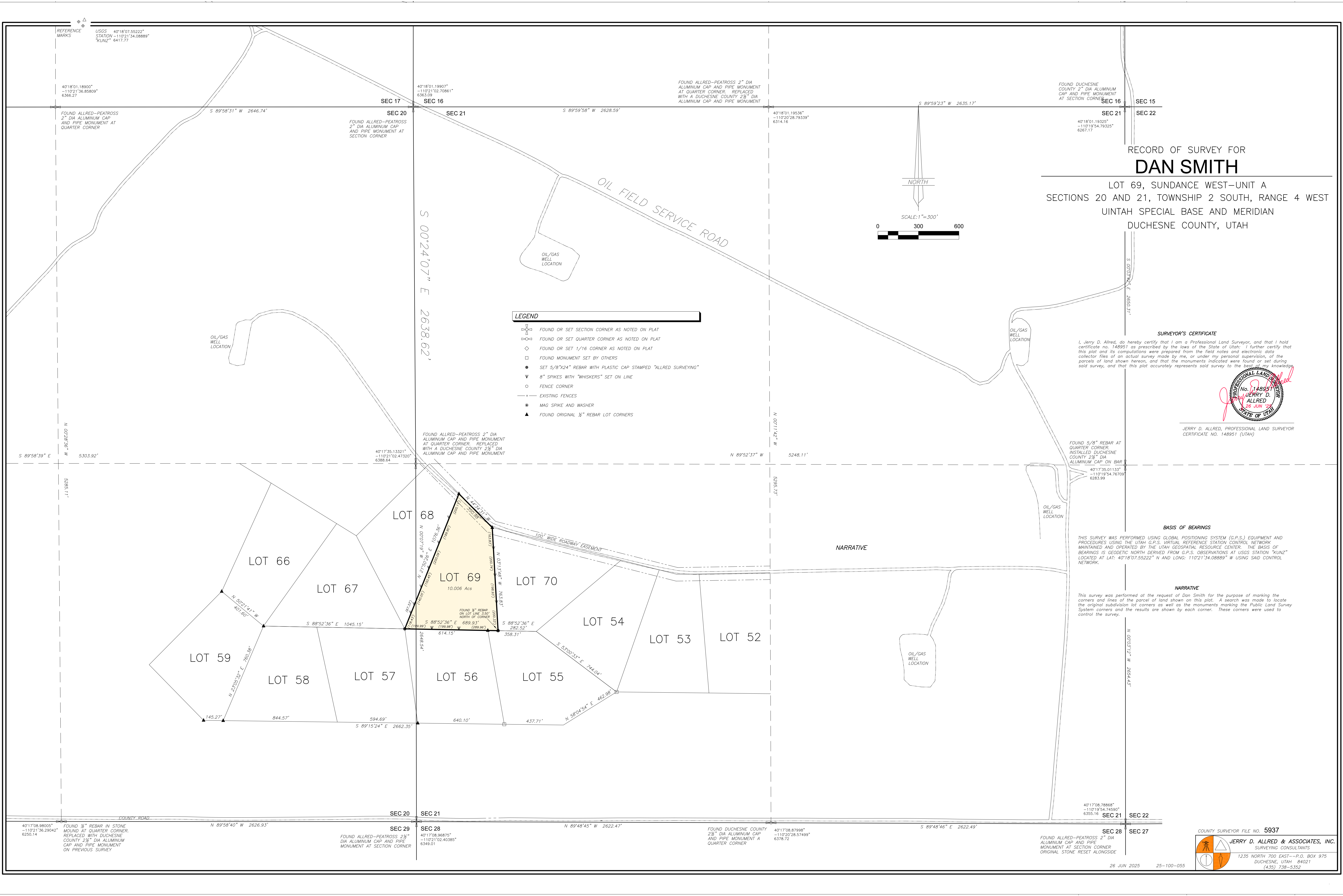
JERRY D. ALLRED, PROFESSIONAL LAND SURVEYOR  
 CERTIFICATE NO. 148951 (UTAH)

**BASIS OF BEARINGS**

THIS SURVEY WAS PERFORMED USING GLOBAL POSITIONING SYSTEM (G.P.S.) EQUIPMENT AND PROCEDURES USING THE UTAH G.P.S. VIRTUAL REFERENCE STATION CONTROL NETWORK MAINTAINED AND OPERATED BY THE UTAH GEOSPATIAL RESOURCE CENTER. THE BASIS OF BEARINGS IS GEODETIC NORTH DERIVED FROM G.P.S. OBSERVATIONS AT USGS STATION "KUNZ" LOCATED AT LAT: 40°18'07.55222" N AND LONG: 110°21'34.08889" W USING SAID CONTROL NETWORK.

**NARRATIVE**

This survey was performed at the request of Dan Smith for the purpose of marking the corners and lines of the parcel of land shown on this plat. A search was made to locate the original subdivision lot corners as well as the monuments marking the Public Land Survey System corners and the results are shown by each corner. These corners were used to control the survey.



COUNTY SURVEYOR FILE NO. 5937

**JERRY D. ALLRED & ASSOCIATES, INC.**  
 SURVEYING CONSULTANTS  
 1235 NORTH 700 EAST—P.O. BOX 975  
 DUCHESNE, UTAH 84021  
 (435) 738-5332