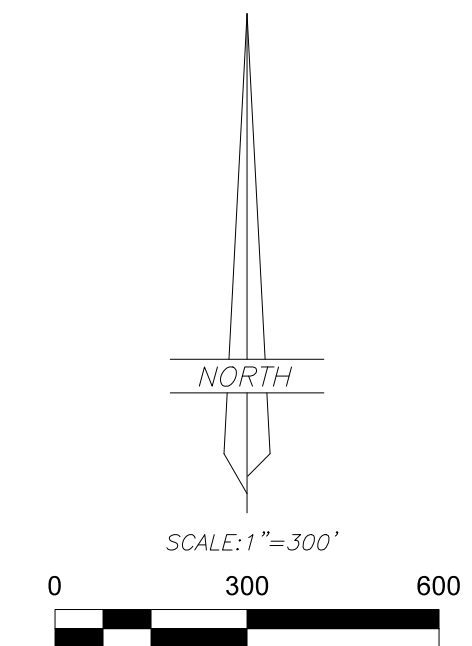


# RECORD OF SURVEY FOR CARLA MCKAY

SECTION 21, TOWNSHIP 2 SOUTH, RANGE 4 WEST  
UINTAH SPECIAL BASE AND MERIDIAN  
DUCHESE COUNTY, UTAH



- LEGEND**
- FOUND OR SET SECTION CORNER AS NOTED ON PLAT
  - FOUND OR SET QUARTER CORNER AS NOTED ON PLAT
  - FOUND OR SET 1/16 CORNER AS NOTED ON PLAT
  - FOUND ORIGINAL MONUMENTS SET PREVIOUSLY
  - SET 5/8"x24" REBAR WITH PLASTIC CAP STAMPED "ALLRED SURVEYING"
  - ▼ 8" SPIKES WITH "WHISKERS" SET ON LINE
  - FENCE CORNER
  - EXISTING FENCE
  - MAG SPIKE AND WASHER

**BASIS OF BEARINGS**

THIS SURVEY WAS PERFORMED USING GLOBAL POSITIONING SYSTEM (G.P.S.) EQUIPMENT AND PROCEDURES USING THE UTAH G.P.S. VIRTUAL REFERENCE STATION CONTROL NETWORK MAINTAINED AND OPERATED BY THE AUTOMATED GEOGRAPHIC REFERENCE CENTER. THE BASIS OF BEARINGS IS GEODETIC NORTH DERIVED FROM G.P.S. OBSERVATIONS AT USGS STATION "KUNZ" LOCATED AT LAT: 40°18'07.55222" N AND LONG: 110°21'34.08889" W USING SAID CONTROL NETWORK.

**NARRATIVE**

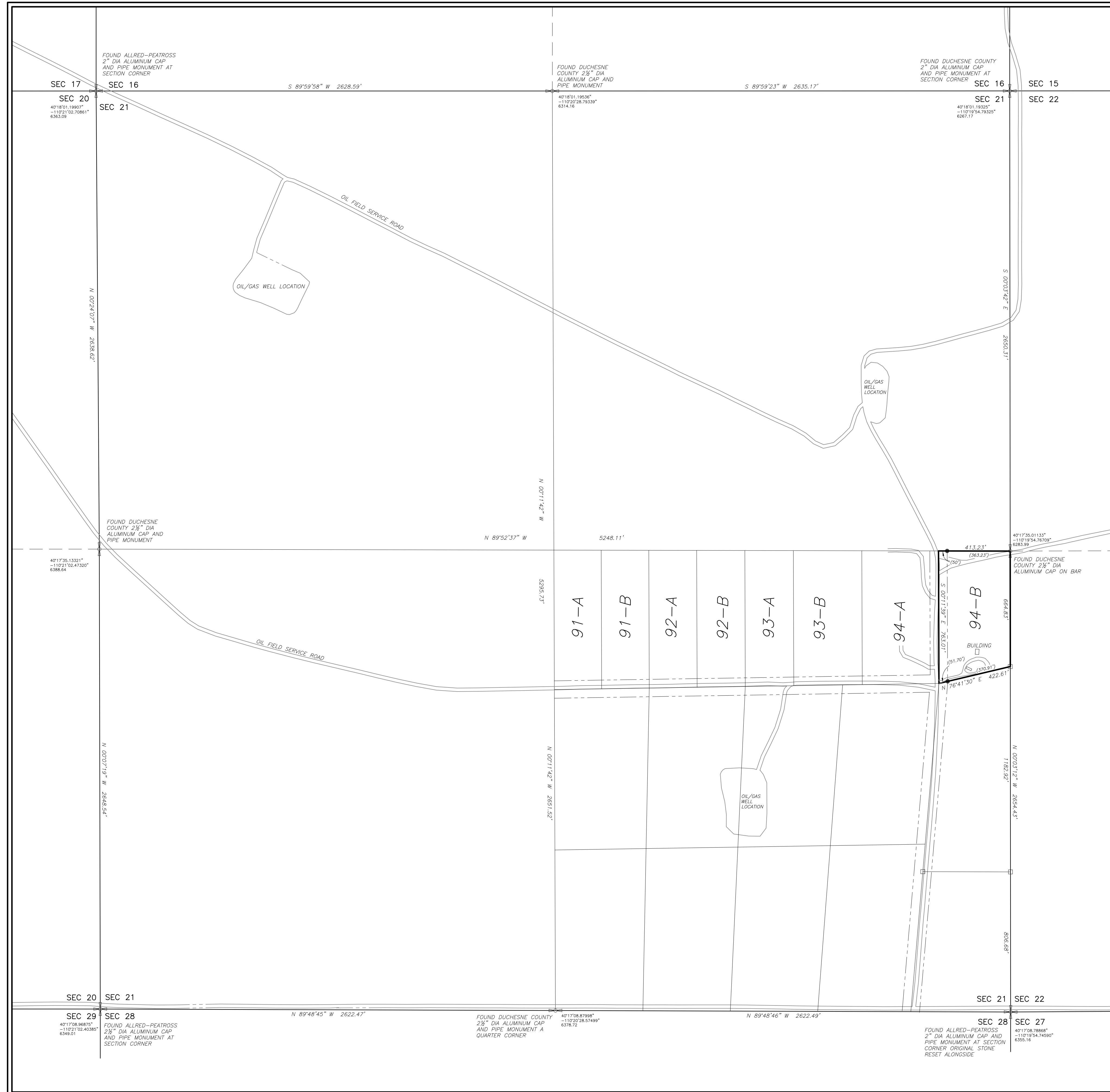
This survey was performed at the request of Carla McKay for the purpose of marking the corners and lines of the parcel of land shown on this plat. A search was made to locate the monuments marking the Public Land Survey System corners as well as the monuments marking the lot corners of Sundance West Unit "C" and the results are shown by each corner. These corners were used to control the survey.

**SURVEYOR'S CERTIFICATE**

I, Jerry D. Allred, do hereby certify that I am a Professional Land Surveyor, and that I hold certificate no. 148951 as prescribed by the laws of the State of Utah; I further certify that this plat and its computations were prepared from the field notes and electronic data collector files of an actual survey made by me, or under my personal supervision, of the parcels of land shown hereon, and that the monuments indicated were found or set during said survey, and that this plat accurately represents said survey to the best of my knowledge.



JERRY D. ALLRED, PROFESSIONAL LAND SURVEYOR  
CERTIFICATE NO. 148951 (UTAH)



COUNTY SURVEYOR FILE NO. 5924

**JERRY D. ALLRED & ASSOCIATES, INC.**  
SURVEYING CONSULTANTS  
1235 NORTH 700 EAST—P.O. BOX 975  
DUCHESE, UTAH 84021  
(435) 738-5352