

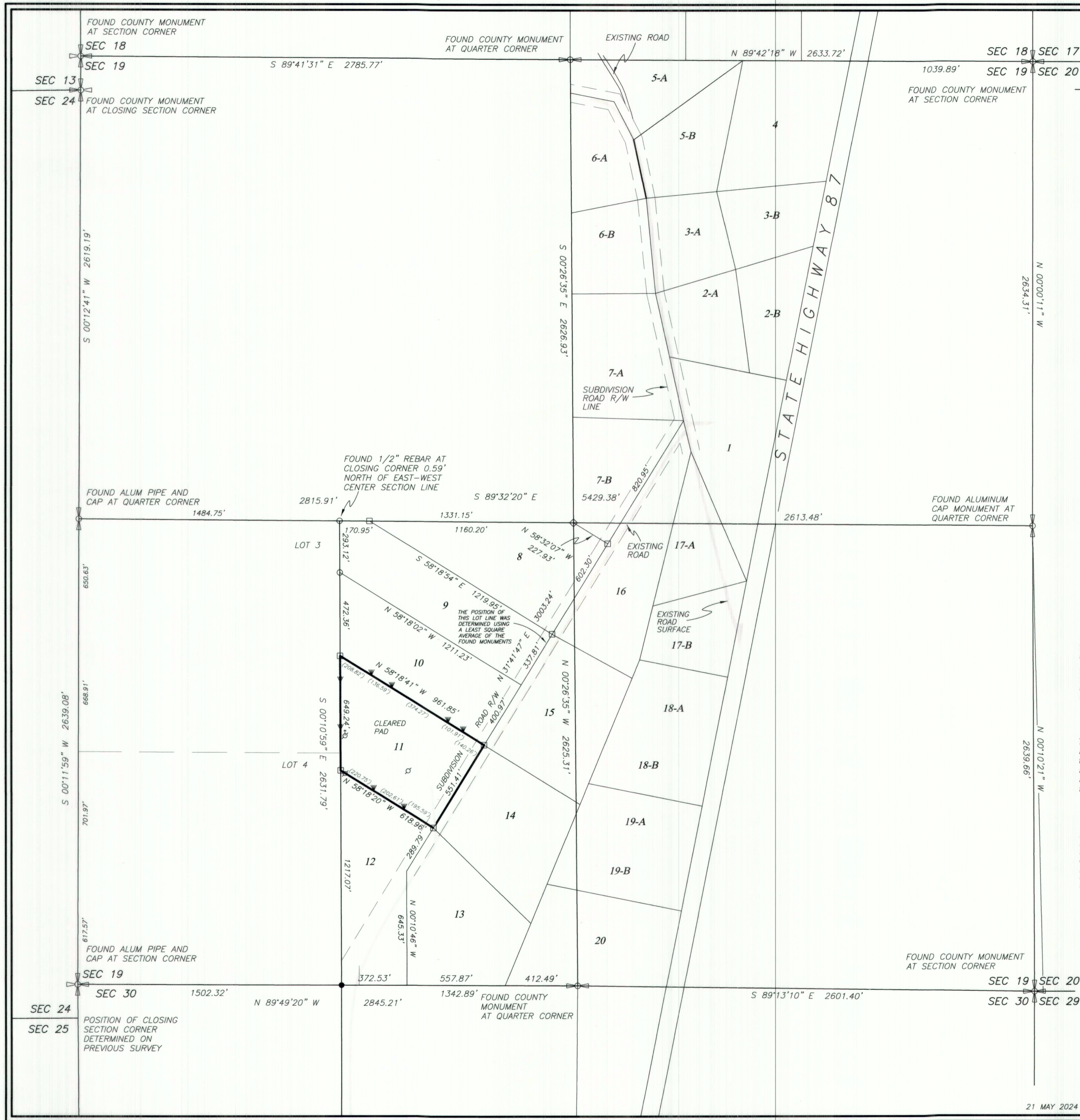
DRAWING NUMBER

5705

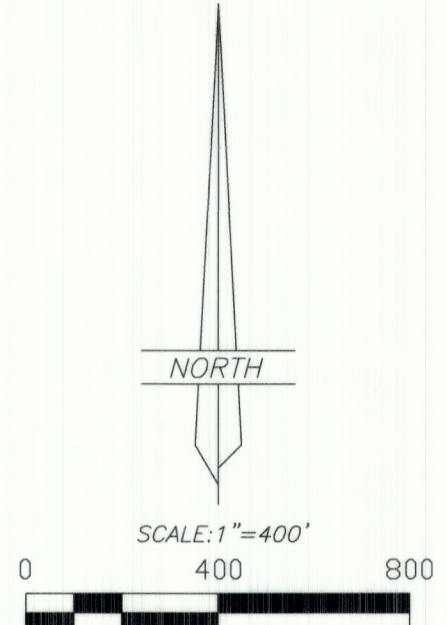
SAFECO PRODUCTS • NEW HORIZON MINNESOTA
REORDER BY PART NUMBER 0551

DRAWING NUMBER

SAFECO PRODUCTS • NEW HORIZON MINNESOTA
REORDER BY PART NUMBER 0551



RECORD OF SURVEY FOR
ASA REYNOLDS
 LOT 11, SUNDANCE WEST-UNIT A
 SECTION 19, TOWNSHIP 2 SOUTH, RANGE 4 WEST
 UINTAH SPECIAL BASE AND MERIDIAN



- LEGEND**
- FOUND OR SET SECTION CORNER AS NOTED ON PLAT
 - FOUND OR SET QUARTER CORNER AS NOTED ON PLAT
 - FOUND OR SET 1/16 CORNER AS NOTED ON PLAT
 - FOUND ORIGINAL 1/2" REBAR LOT CORNER MONUMENTS
 - SET 5/8"x24" REBAR WITH PLASTIC CAP STAMPED "ALLRED SURVEY"
 - 8" SPIKES WITH "WHISKERS" SET ON LINE
 - FENCE CORNER
 - EXISTING FENCE
 - MAG SPIKE AND WASHER
 - POWER POLE

BASIS OF BEARINGS

THIS SURVEY WAS PERFORMED USING GLOBAL POSITIONING SYSTEM PROCEDURES AND EQUIPMENT

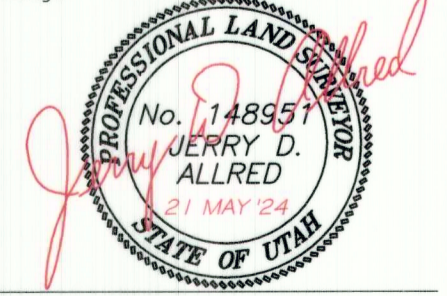
THE BASIS OF BEARINGS IS GEODETIC NORTH DERIVED FROM G.P.S. OBSERVATIONS AT THE SECTION CORNER LOCATED AT LAT. 40°15'22.90258"N AND LONG. 110°23'21.19760"W USING THE UTAH STATE G.P.S. VIRTUAL REFERENCE STATION CONTROL NETWORK MAINTAINED AND OPERATED BY THE UTAH GEOSPATIAL RESOURCE CENTER

NARRATIVE

This survey was performed at the request of Jon Wilkerson for Asa Reynolds, for the purpose of locating the Corners of Lot 11 and flagging the lot lines. A search was made for the monuments marking the Public Lands Survey System corners and the results are noted on this plat. The monuments marking the lots of Sundance West Unit A as amended were found and flagged and used to control the survey.

SURVEYOR'S CERTIFICATE

I, Jerry D. Allred, do hereby certify that I am a Professional Land Surveyor, and that I hold certificate no. 148951 as prescribed by the laws of the State of Utah. I further certify that this plat and its computations were prepared from the field notes and electronic data collector files of an actual survey made by me, or under my personal supervision, of the parcels of land shown hereon, and that the monuments indicated were found or set during said survey, and that this plat accurately represents said survey to the best of my knowledge.



Jerry D. Allred, Professional Land Surveyor
 Utah Certificate Number 148951

COUNTY SURVEYOR FILE NO. **5705**

JERRY D. ALLRED & ASSOCIATES, INC.
 SURVEYING CONSULTANTS

1235 NORTH 700 EAST--P.O. BOX 975
 DUCHESNE, UTAH 84021
 (435) 738-5352