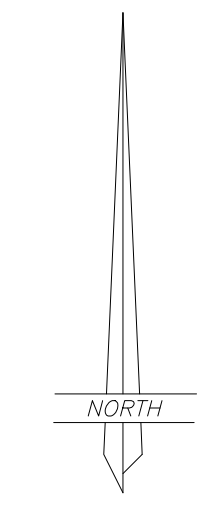


RECORD OF SURVEY FOR  
**MARIA LOPEZ**  
 CEDAR VIEW PROPERTIES  
 LOT 15, UNIT 3-PHASE 2  
 SECTION 8, TOWNSHIP 2 SOUTH, RANGE 2 WEST  
 UTAH SPECIAL BASE AND MERIDIAN  
 DUCHESNE COUNTY, UTAH



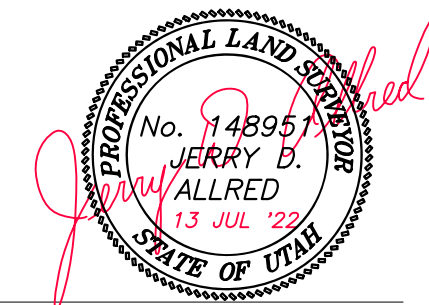
SCALE: 1"=300'



- LEGEND**
- FOUND OR SET SECTION CORNER AS NOTED ON PLAT
  - FOUND OR SET QUARTER CORNER AS NOTED ON PLAT
  - FOUND OR SET 1/16 CORNER AS NOTED ON PLAT
  - FOUND MONUMENT SET BY OTHERS
  - SET 5/8"x24" REBAR WITH PLASTIC CAP STAMPED "ALLRED SURVEY"
  - 8" SPIKES WITH "WHISKERS" SET ON LINE
  - FENCE CORNER
  - EXISTING FENCE

**SURVEYOR'S CERTIFICATE**

I, Jerry D. Allred, do hereby certify that I am a Professional Land Surveyor, and that I hold certificate no. 148951 as prescribed by the laws of the State of Utah. I further certify that this plat and its computations were prepared from the field notes and electronic data collector files of an actual survey made by me, or under my personal supervision, of the parcels of land shown hereon, and that the monuments indicated were found or set during said survey, and that this plot accurately represents said survey to the best of my knowledge.



Jerry D. Allred, Professional Land Surveyor,  
 Certificate No. 148951 (Utah)

**NARRATIVE**

This survey was performed at the request of Maria Lopez for the purpose of finding and marking the corners and lines of Lot 15, CEDAR VIEW PROPERTIES, UNIT 3, PHASE 2 as shown on this plat. The monuments marking the Public Land Survey System corners around parts of Section 8 were found as indicated and used to control the survey. Additional control corners were found and used and are noted on the plat.

**BASIS OF BEARINGS**

THIS SURVEY WAS PERFORMED BY USING G.P.S. (GLOBAL POSITIONING SYSTEM) EQUIPMENT AND PROCEDURES. THE BASIS OF BEARINGS FOR THIS SURVEY IS A BEARING OF N 89°42'42" E FROM THE WEST 1/4 CORNER TO THE EAST 1/4 CORNER DERIVED FROM G.P.S. OBSERVATIONS USING THE UTAH STATE G.P.S. VIRTUAL REFERENCE STATION CONTROL NETWORK MAINTAINED AND OPERATED BY THE AUTOMATED GEOGRAPHIC REFERENCE CENTER.

