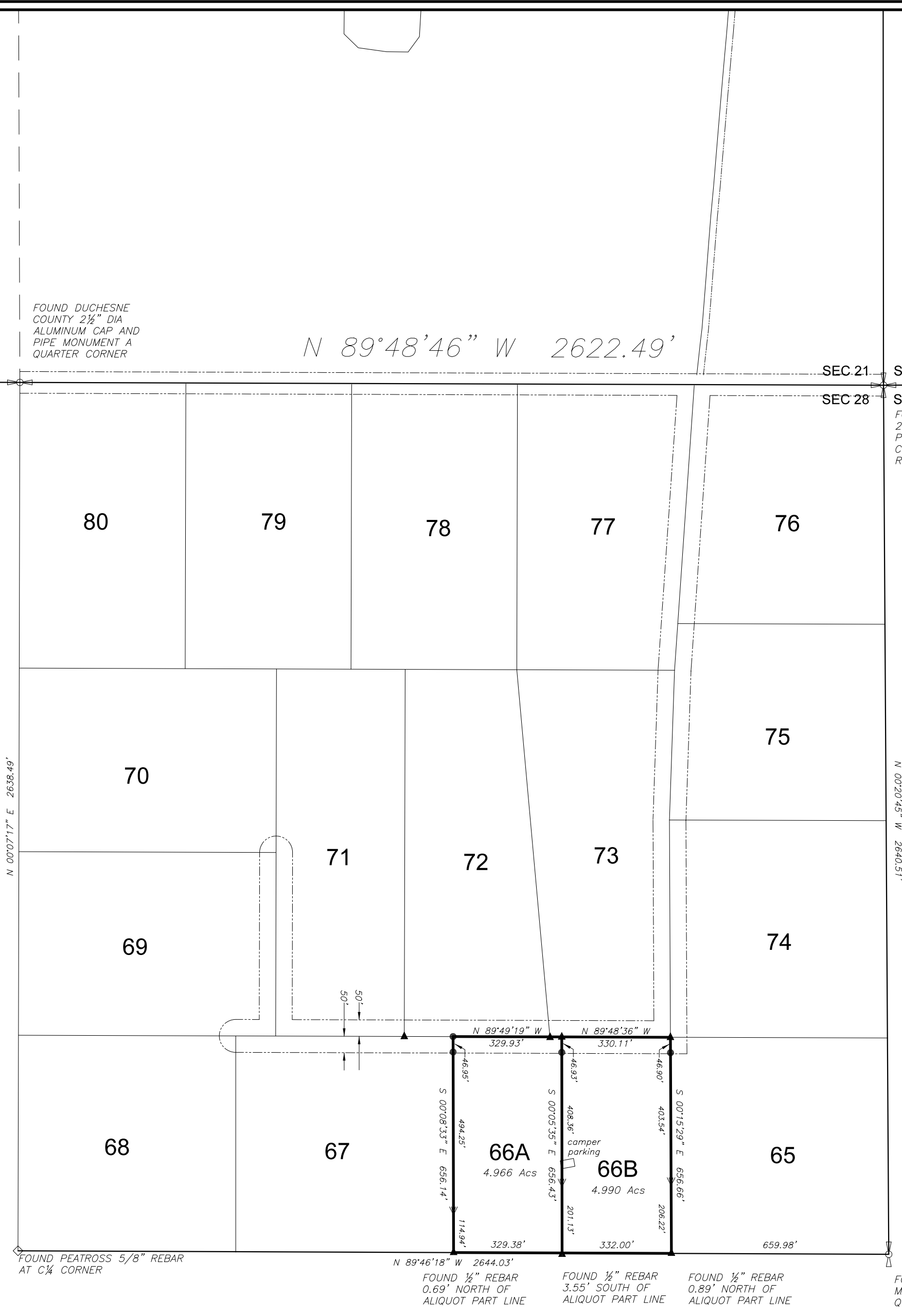
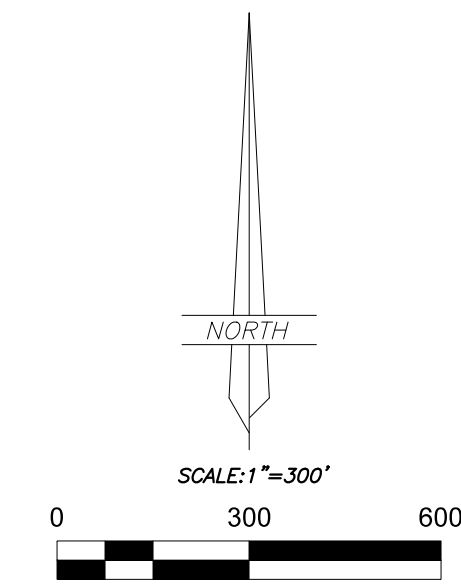


# RECORD OF SURVEY FOR CLEMENT GELAS

LOTS 66A AND 66B, SUNDANCE WEST UNIT C  
SECTION 28, TOWNSHIP 2 SOUTH, RANGE 4 WEST  
UINTAH SPECIAL BASE AND MERIDIAN



SEC 21 SEC 22  
SEC 28 SEC 27  
FOUND ALLRED-PEATROSS  
2" DIA ALUMINUM CAP AND  
PIPE MONUMENT AT SECTION  
CORNER ORIGINAL STONE  
RESET ALONGSIDE



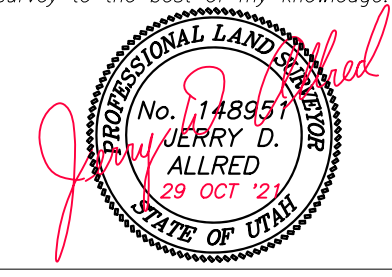
- LEGEND**
- ⊕ FOUND OR SET SECTION CORNER AS NOTED ON PLAT
  - ⊗ FOUND OR SET QUARTER CORNER AS NOTED ON PLAT
  - ◇ FOUND OR SET 1/16 CORNER AS NOTED ON PLAT
  - ▲ FOUND MONUMENT SET BY OTHERS
  - SET 5/8"x24" REBAR WITH PLASTIC CAP STAMPED "ALLRED SURVEY"
  - ▼ 8" SPIKES WITH "WHISKERS" SET ON LINE
  - FENCE CORNER
  - x - x - EXISTING FENCE

**NARRATIVE**

This survey was performed at the request of Clement Gelas for the purpose of finding, restoring or replacing the lot corners shown on this plat. A search was made to locate the Public Land Survey System corners as well as the original lot corners for these lots in SUNDANCE RANCH WEST UNIT C. The results are noted on the plat. The data from the original subdivision plat was plotted and then rotated and translated to best fit the found monuments as indicated. The found lot corners along the south line were treated as "closing corners" along the aliquot part line and as line points for the north-south lot lines.

**SURVEYOR'S CERTIFICATE**

I, Jerry D. Allred, do hereby certify that I am a Professional Land Surveyor, and that I hold certificate no. 148951 as prescribed by the laws of the State of Utah; I further certify that this plat and its computations were prepared from the field notes and electronic data collector files of an actual survey made by me, or under my personal supervision, of the parcels of land shown hereon, and that the monuments indicated were found or set during said survey, and that this plat accurately represents said survey to the best of my knowledge.



JERRY D. ALLRED, PROFESSIONAL LAND SURVEYOR  
CERTIFICATE NO. 148951 (UTAH)

**BASIS OF BEARINGS**

THIS SURVEY WAS PERFORMED USING GLOBAL POSITIONING SYSTEM (G.P.S.) EQUIPMENT AND PROCEDURES USING THE UTAH G.P.S. VIRTUAL REFERENCE STATION CONTROL NETWORK MAINTAINED AND OPERATED BY THE AUTOMATED GEOGRAPHIC REFERENCE CENTER. THE BASIS OF BEARINGS IS GEODETIC NORTH DERIVED FROM G.P.S. OBSERVATIONS AT USGS STATION "KUNZ" LOCATED AT LAT: 40°18'07.55222" N AND LONG: 110°21'34.08889" W USING SAID CONTROL NETWORK.

COUNTY SURVEYOR FILE NO. 4972

**JERRY D. ALLRED & ASSOCIATES, INC.**  
SURVEYING CONSULTANTS  
1235 NORTH 700 EAST--P.O. BOX 975  
DUCESNE, UTAH 84021  
(435) 738-5352