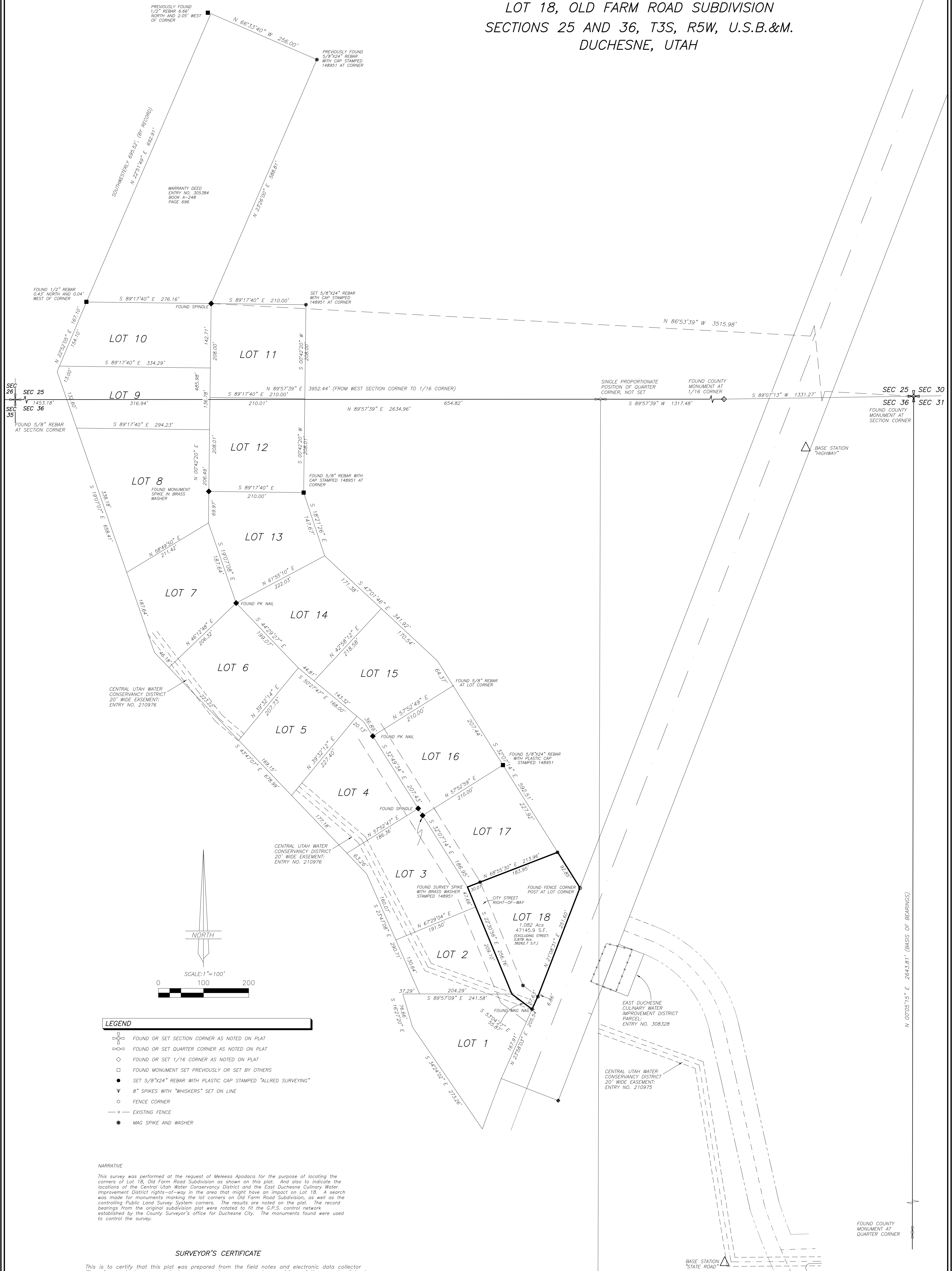


**PROPERTY SURVEY FOR
MELEESA APODACA**
LOT 18, OLD FARM ROAD SUBDIVISION
SECTIONS 25 AND 36, T3S, R5W, U.S.B.&M.
DUCHESNE, UTAH



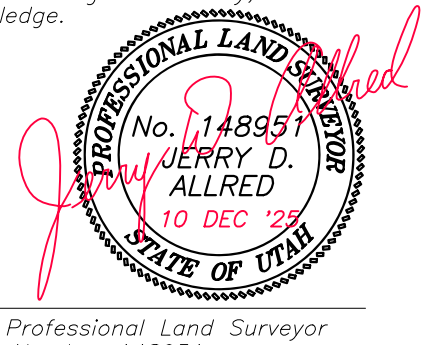
- LEGEND**
- FOUND OR SET SECTION CORNER AS NOTED ON PLAT
 - FOUND OR SET QUARTER CORNER AS NOTED ON PLAT
 - FOUND OR SET 1/16 CORNER AS NOTED ON PLAT
 - FOUND MONUMENT SET PREVIOUSLY OR SET BY OTHERS
 - SET 5/8"x24" REBAR WITH PLASTIC CAP STAMPED "ALLRED SURVEYING"
 - ▼ 8" SPIKES WITH "WHISKERS" SET ON LINE
 - FENCE CORNER
 - EXISTING FENCE
 - MAG SPIKE AND WASHER

NARRATIVE

This survey was performed at the request of Meleesa Apodaca for the purpose of locating the corners of Lot 18, Old Farm Road Subdivision as shown on this plat. And also to indicate the locations of the Central Utah Water Conservancy District and the East Duchesne Culinary Water Improvement District rights-of-way in the area that might have an impact on Lot 18. A search was made for monuments marking the lot corners on Old Farm Road Subdivision, as well as the controlling Public Land Survey System corners. The results are noted on the plat. The record bearings from the original subdivision plat were rotated to fit the C.S.S. control network established by the County Surveyor's office for Duchesne City. The monuments found were used to control the survey.

SURVEYOR'S CERTIFICATE

This is to certify that this plat was prepared from the field notes and electronic data collector files of an actual survey made by me, or under my personal supervision, of the parcels of land shown herein, and that the monuments indicated were found or set during said survey, and that this plat accurately represents said survey to the best of my knowledge.



Jerry D. Allred, Professional Land Surveyor
Utah Certificate Number 148951

COUNTY SURVEYOR FILE NO. 6048
JERRY D. ALLRED & ASSOCIATES, INC.
SURVEYING CONSULTANTS
1235 NORTH 700 EAST—P.O. BOX 975
DUCHESNE, UTAH 84021
(435) 738-5352