

500 NORTH STREET

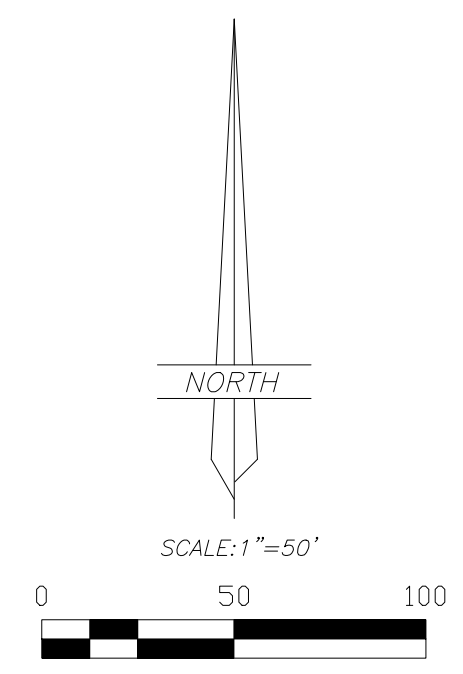
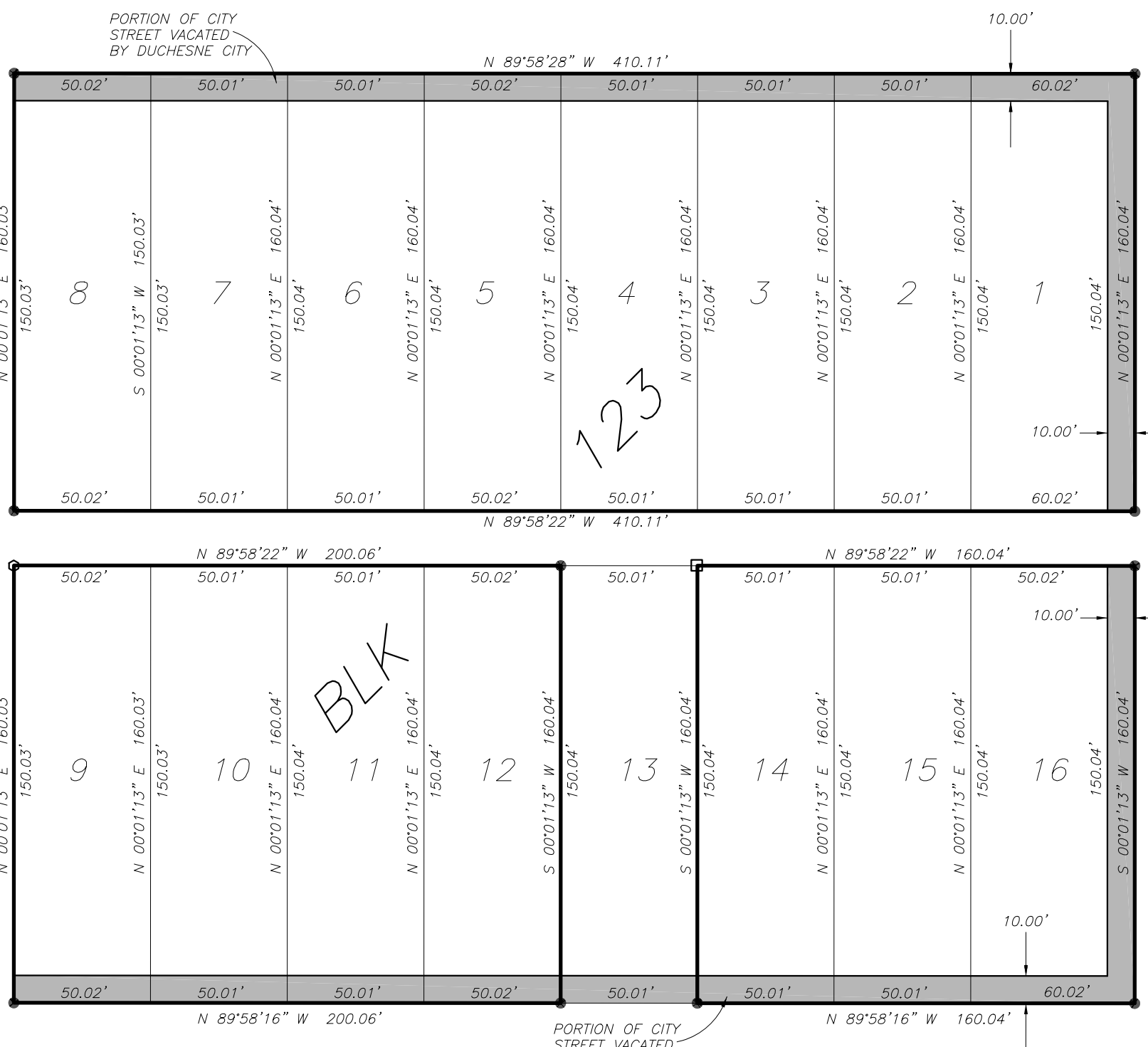
N 89°58'28" W 480.12'

RECORD OF SURVEY FOR
KARRI HOOPES

LOTS 1-12 AND LOTS 14-16, BLOCK 123
DUCHESNE TOWNSITE SURVEY
DUCHESNE CITY, UTAH

300 EAST STREET

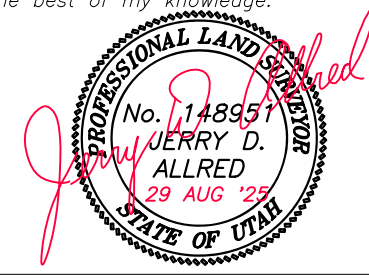
400 EAST STREET



| LEGEND | |
|--------|--|
| | FOUND OR SET SECTION CORNER AS NOTED ON PLAT |
| | FOUND OR SET QUARTER CORNER AS NOTED ON PLAT |
| | FOUND OR SET 1/16 CORNER AS NOTED ON PLAT |
| | FOUND MONUMENT SET BY OTHERS |
| | SET 5/8"x24" REBAR WITH PLASTIC CAP STAMPED "ALLRED SURVEYING" |
| | 8" SPIKES WITH "WHISKERS" SET ON LINE |
| | FENCE CORNER |
| | EXISTING FENCE |
| | MAG SPIKE AND WASHER |

SURVEYOR'S CERTIFICATE

I, Jerry D. Allred, do hereby certify that I am a Professional Land Surveyor, and that I hold certificate no. 148951 as prescribed by the laws of the State of Utah; I further certify that this plat and its computations were prepared from the field notes and electronic data collector files of an actual survey made by me, or under my personal supervision, of the parcels of land shown hereon, and that the monuments indicated were found or set during said survey, and that this plat accurately represents said survey to the best of my knowledge.



JERRY D. ALLRED, PROFESSIONAL LAND SURVEYOR
CERTIFICATE NO. 148951 (UTAH)

BASIS OF BEARINGS

THIS SURVEY WAS PERFORMED USING GLOBAL POSITIONING SYSTEM PROCEDURES AND EQUIPMENT.
THE BASIS OF BEARINGS IS GEODETIC NORTH DERIVED FROM G.P.S. OBSERVATIONS AT A CONTROL POINT LOCATED AT LAT. 40°10'43.26237"N AND LONG. 110°23'52.06157"W USING THE UTAH STATE G.P.S. VIRTUAL REFERENCE STATION CONTROL NETWORK MAINTAINED AND OPERATED BY THE UTAH GEOSPATIAL RESOURCE CENTER

NARRATIVE

This survey was performed at the request of Karri Hoopes for the purpose of marking on the ground the property corners as indicated on this plat. The centerline monuments comprising the Duchesne City control system were found and used as shown.

COUNTY SURVEYOR FILE NO. 5982

JERRY D. ALLRED & ASSOCIATES, INC.
SURVEYING CONSULTANTS
1235 NORTH 700 EAST--P.O. BOX 975
DUCHESNE, UTAH 84021
(435) 738-5352