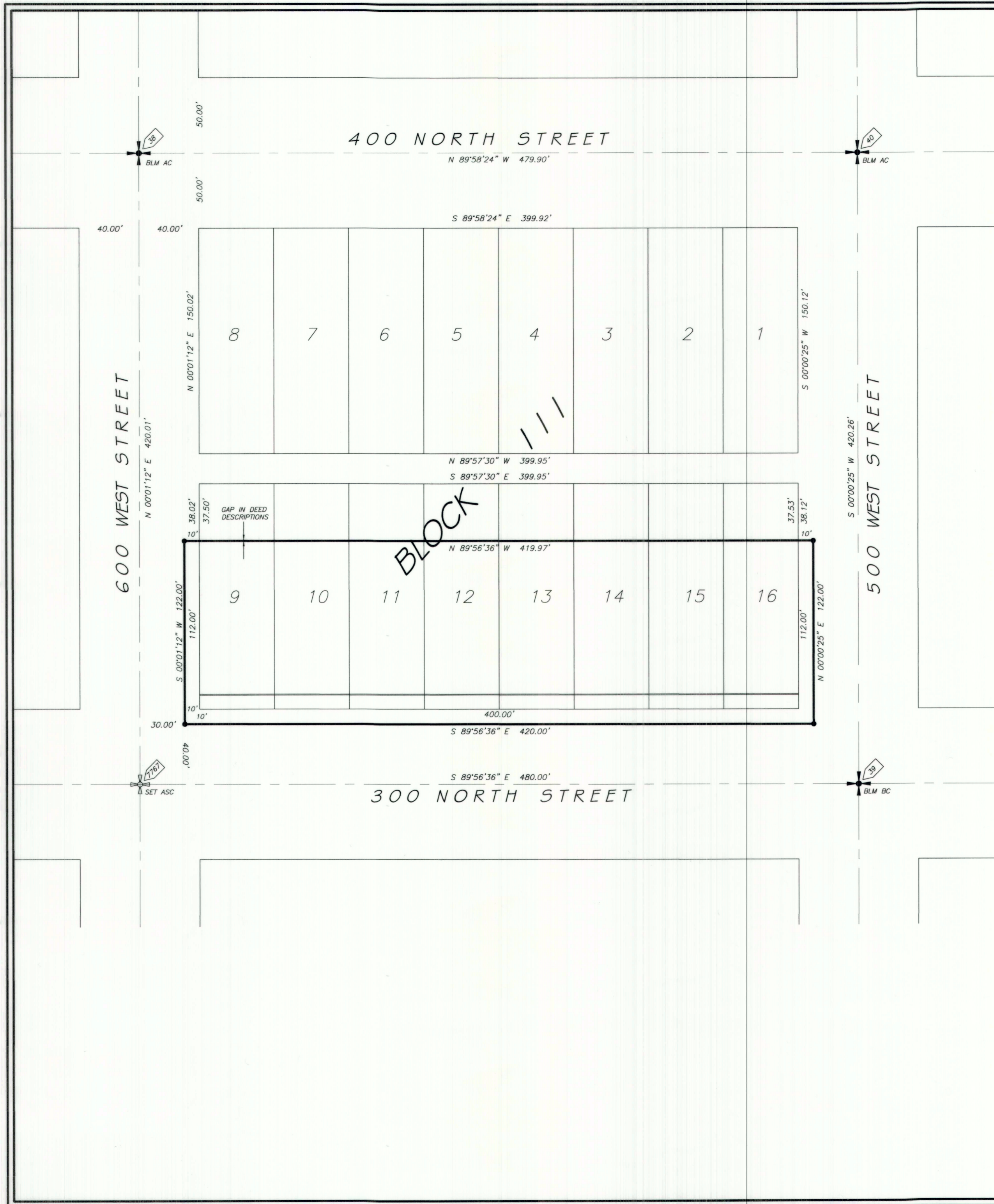


DRAWING NUMBER
5668

SAFOD PRODUCTS • NEW HOPE, MINNESOTA
REORDER BY PART NUMBER 0201

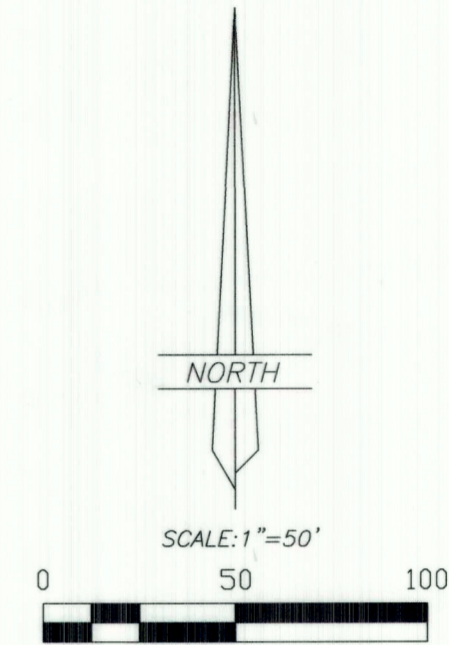
DRAWING NUMBER

SAFOD PRODUCTS • NEW HOPE, MINNESOTA
REORDER BY PART NUMBER 0201



PROPERTY SURVEY FOR COLBY GRANT

LOTS 9-16, BLOCK 111
DUCHESNE TOWNSITE SURVEY
DUCHESNE CITY, UTAH

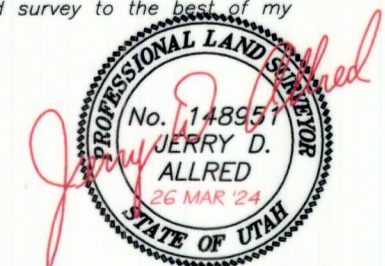


LEGEND

- SET 5/8"x24" REBAR WITH CAP STAMPED ALLRED SURVEY AT CENTERLINE INTERSECTION
- FOUND BLM CENTERLINE MONUMENTS
- SET 5/8"x24" REBAR WITH CAP STAMPED ALLRED SURVEYING AT PROPERTY CORNERS
- INDICATES PROJECT POINT NUMBER

SURVEYOR'S CERTIFICATE

I, Jerry D. Allred, do hereby certify that I am a Professional Land Surveyor, and that I hold certificate no. 148951 as prescribed by the laws of the State of Utah; I further certify that this plat and its computations were prepared from the field notes and electronic data collector files of an actual survey made by me, or under my personal supervision, of the parcels of land shown hereon, and that the monuments indicated were found or set during said survey, and that this plat accurately represents said survey to the best of my knowledge.



JERRY D. ALLRED, PROFESSIONAL LAND SURVEYOR
CERTIFICATE NO. 148951 (UTAH)

COUNTY SURVEYOR FILE NO. **5668**

JERRY D. ALLRED & ASSOCIATES, INC.
SURVEYING CONSULTANTS
1235 NORTH 700 EAST--P.O. BOX 975
DUCHESNE, UTAH 84021
(435) 738-5352