

12

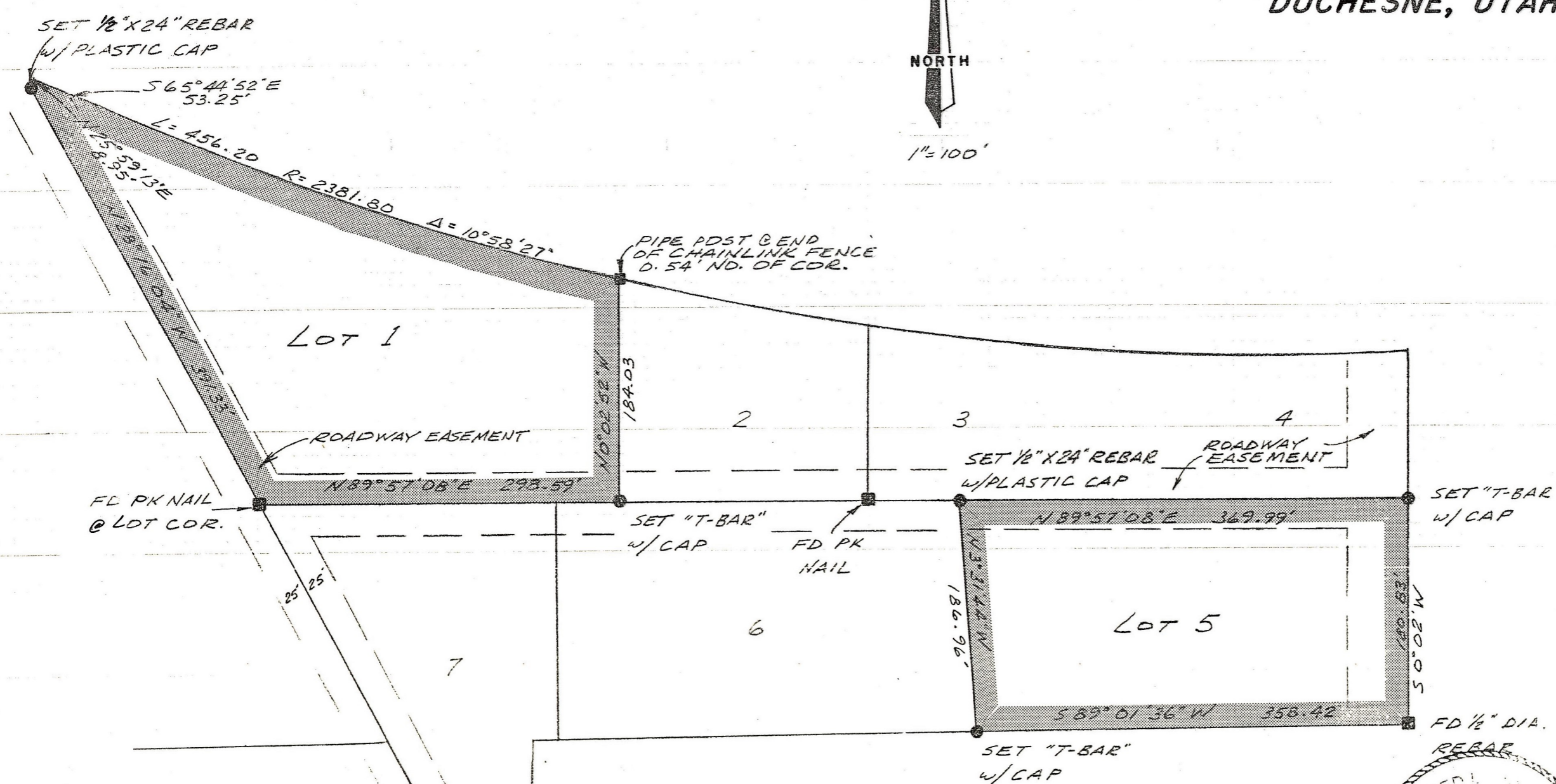
SAFCO PRODUCTS • NEW HOPE, MINNESOTA
REORDER BY PART NUMBER 6551

SAFCO PRODUCTS • NEW HOPE, MINNESOTA
REORDER BY PART NUMBER 6551

LOT SURVEY FOR ZIONS FIRST NATIONAL BANK DUCHESNE INDUSTRIAL PARK SUBDIVISION DUCHESNE, UTAH



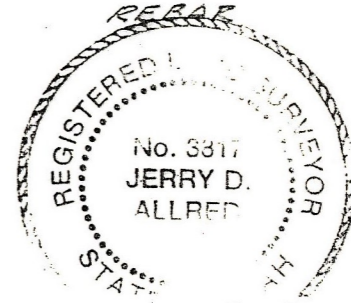
1" = 100'



SURVEYOR'S CERTIFICATE

This is to certify that I have surveyed the parcels shown on this plat and that the monuments indicated were found or set during said survey, and that this plat accurately represents said survey to the best of my knowledge.

Jerry D. Allred
Jerry D. Allred, Registered Land
Surveyor, Cert. No. 3817 (Utah)



77-124-007 17 SEPT '87

JERRY D. ALLRED & ASSOCIATES
Surveying & Engineering Consultants

121 North Center Street
P.O. Drawer C
DUCHESNE, UTAH 84021
(801) 738-5352

NOTES

All monuments set have identifying caps.

The subdivision plat on file with the Duchesne County Recorder was used for reference and calculations.

The monuments indicated as found were used to control the survey.